

Adding images and Sort Codes to the Side Bar for Product Categories in RemoteNet

Djf 12/30/14

Overview: this document outlines the procedure for adding a sidebar image and or sort code to the RemoteNet side bar

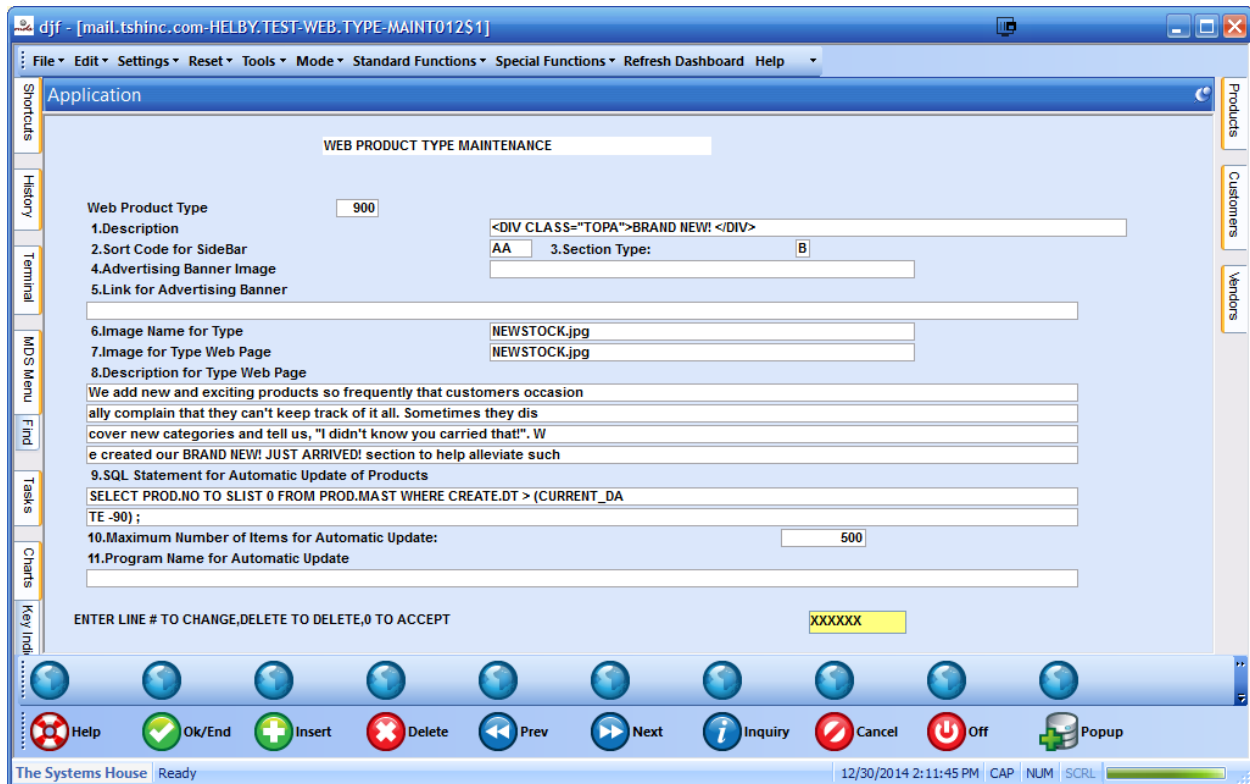
This is what the sidebar will look like once you have update the sort codes and style sheets

In this example we added images to the section breaks.

The screenshot shows the BETA SMITH website interface. The top navigation bar includes links for My Account, Place an Order, Inquiries, Blog, Projects, Help, and Contact Us. A sidebar on the left lists various product categories such as Tucson Show, Weekly Sale, and Jewelry Displays. The main content area displays a shopping cart summary: 'You are logged in as HELBY 10', 'Your customer number is: 4557', and 'You have 0 item(s) in your Shopping Cart'. Below this, there are instructions on how to manage orders, including 'Click here to place a New Order with the items in your cart' and 'Click on Resume to resume an older order and put your current cart on hold'. A 'PLEASE NOTE' section states: 'Orders should not exceed 500 lines. If necessary, please break into 2 orders.' At the bottom, a table lists 107 items across 3 pages, with columns for Web Order#, Number Of Items, Customer PO, Order Date, Order Amt, and Status.

Web Order#	Number Of Items	Customer PO	Order Date	Order Amt	Status
Resume Combine 300799	2		12/22/14	\$52.99	In Cart
Resume Combine 300498	2		05/20/14	\$4.00	In Cart
Resume Combine 300551	39		04/07/14	\$257.70	On-Hold
Resume Combine 300517	10		01/30/14	\$218.40	On-Hold
Resume Combine 300429	2		11/14/13	\$47.64	In Cart
Resume Combine 300440	2		11/14/13	\$24.26	In Cart
Resume Combine 300427	3		11/13/13	\$40.27	In Cart
Resume Combine 300424	1		11/07/13	\$10.33	In Cart
Resume Combine 300394	2		09/16/13	\$16.24	In Cart
Resume Combine 300328	2		05/31/13	\$426.00	In Cart
Resume Combine 300319	2		05/29/13	\$2,792.00	In Cart
Resume Combine 300302	3		05/21/13	\$949.80	On-Hold
Resume Combine 300275	3		03/05/13	\$145.80	In Cart

Step 1. – Setup of the Web Type Maintenance - ADD THE SORT CODE TO THE PRODUCT TYPE



sort code – option 2 on the web type screen

for each group – i.e. for group 1 – let’s say group A
Create each category group with a code A1, A2 etc. ‘

In your example:

WEB FEATURES Brand New! Just Arrived! Sort code A1

Closeouts sort code A2

Free Jewelry Projects Sort Code A3

A4–A99 HERE

PRODUCT CATEGORIES Adhesives/ Glues/ Glazes Sort code B1

Bead Boards And Trays Sort code B2

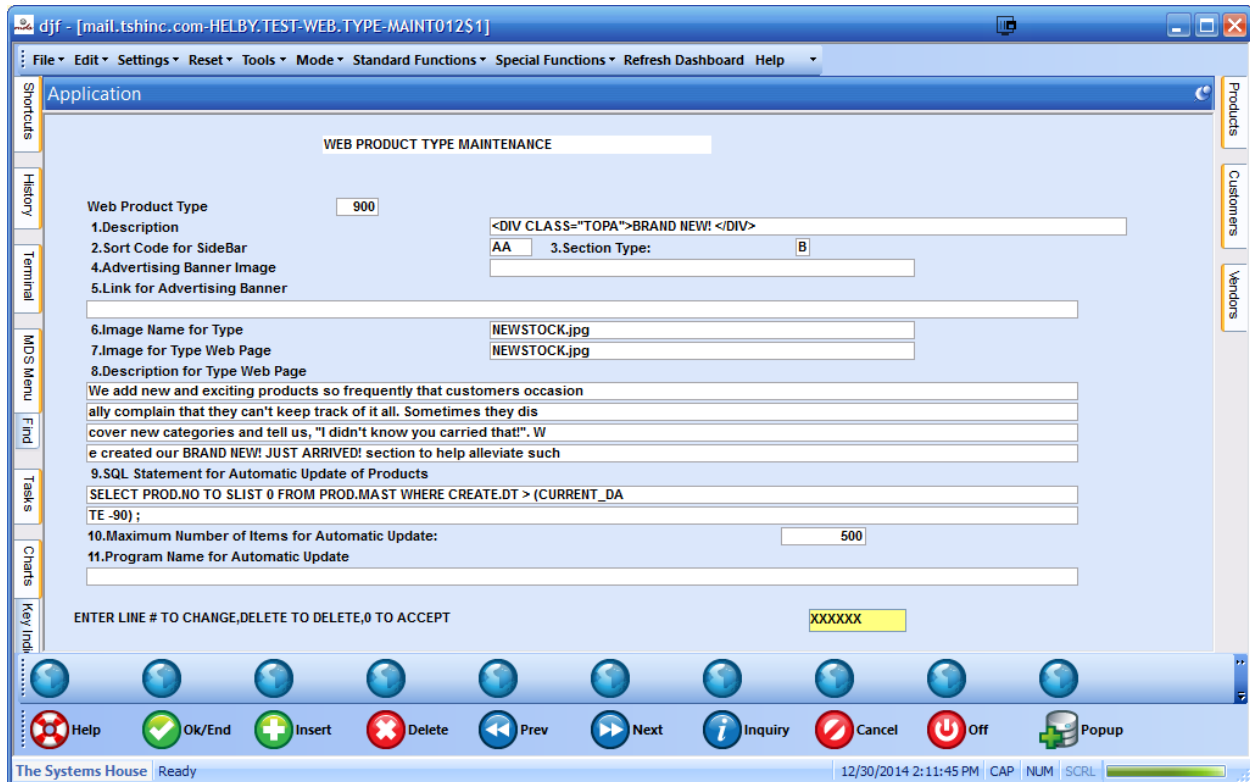
Bead Kits Sort code B3

THEN B4–99

THEN ADD THE NEXT SECTION AS C ETC ,

You can also use AA, AB ETC – essentially you can control the layout of the types on the page using the sort code

Step 2. Establish different colors/fonts/background images to denote a section using a cascading style sheet (css)



To get the image to display for each one you would need to just add the style sheet for the image to the description line – example instead of Holiday Gift Suggestions it would be

```
< div class="TopA"> Holiday Gift Sugg < /div>
```

And you can style the images/etc in the .TopA Class

For the top of the TopB Class you would put –

```
< div class="TopB"> Adhesives/ Glues/ Glazes Sort code < /div>
```

Then in your style sheet (uploaded/downloaded via RemoteNet upload download maint)

Add the codes you want for those styles.

```
.TopA {  
display: table-cell;  
vertical-align: bottom;  
background-image: url(http://hosting.tshinc.com/images/webf1.jpg)  
;  
height: 50px ;  
width:175px ;  
background-repeat: no-repeat;  
background-position: top;  
}  
.TopB {  
display: table-cell;  
vertical-align: bottom;  
background-image: url(http://hosting.tshinc.com/images/webf2.jpg)  
;  
height: 50px ;  
width:175px ;  
background-repeat: no-repeat;  
background-position: top;  
}
```

In this example I added a background image and a set width and height to get the desired effect –but you can modify as needed.

Note if you only want these to show while using the side bar you can tell the style sheet to only apply then when inside the side bar using

```
.milonictable .topb { css stuff goes here }
```

this will tell it to only apply the class of topb to stuff inside the milonic table on the side..

Step 3. Run the Web Catalog Xref Update to update the side bar and have the categories display the new style sheets.



