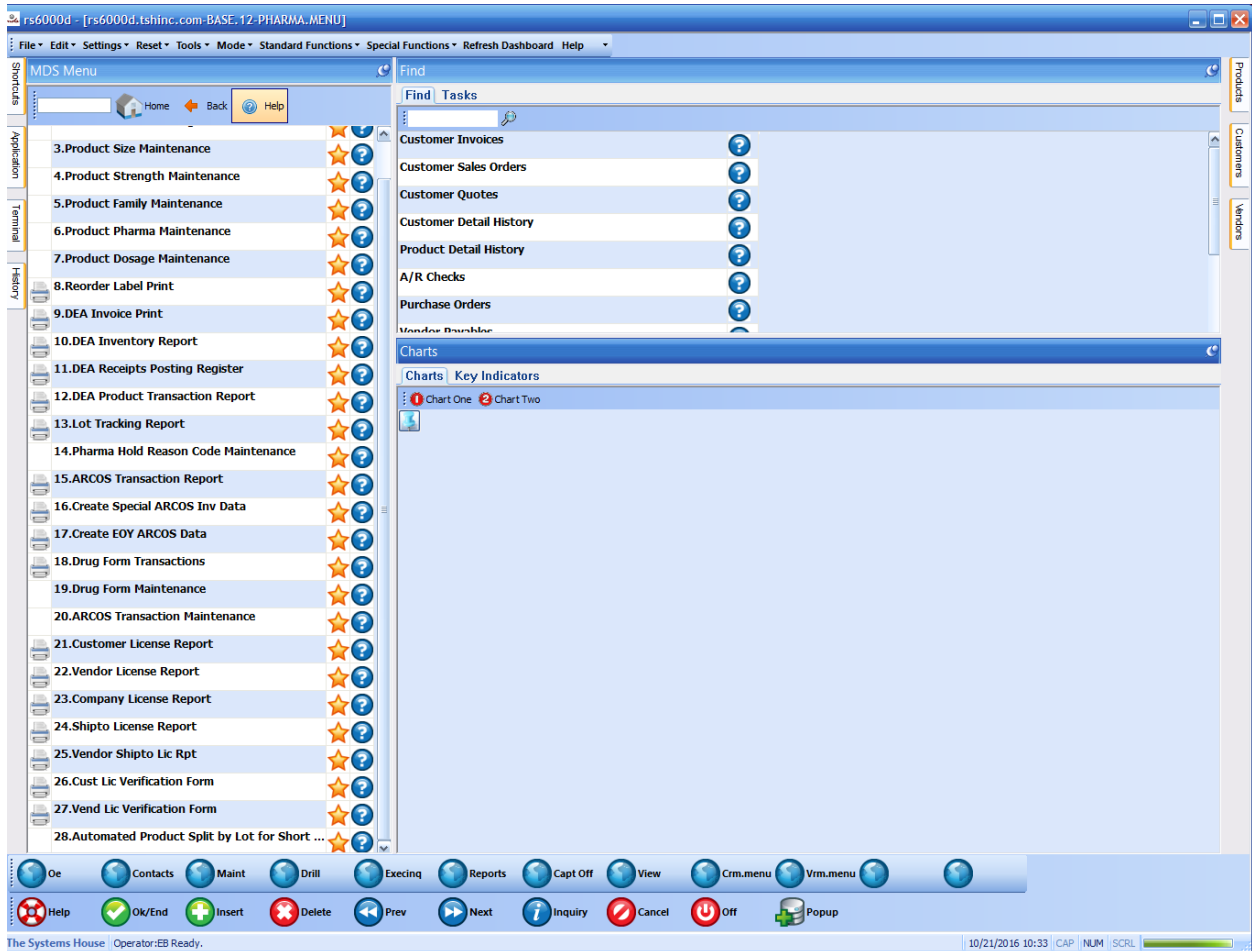


Automated Product Split by Lot for Short Dated and Specials

- This option provides the ability to split the inventory of one item into multiple items.
- This can be used to sell inventory that is near the expiration date.
- The most common use is for specials, deals, and EDI Partners, such as Pharmsaver and Surecost.

Go to Optional Systems -> Pharma Menu -> Automated Product Split by lot for Short Dated and Specials



You will be entering the information from the lot that you are moving to the short dated item. You can use the lookups on each of the fields: Warehouse, Product#, Location, and Lot Number.

Automated Product Split by Lot for Short Dated and Specials

Warehouse: 001 THE SYSTEMS HOUSE, INC.

Product#: 103135 BABY OIL

Location: A-888

Lot Number: 092316

On Hand in Warehouse: 5

On Hand in Location: 5

1.New Location: A-222

Quantity Moved: 5

2.Reason Code: 53 Lot Transfer

Please make a selection, OK/END to Save, or Cancel

The Systems House | Operator:EB Ready. 10/21/2016 11:11 CAP NUM SCRL

When this process is completed, if the Short Dated Item does not exist, the system will create it. The new item will be the original item number preceded with an "S".

Now, when looking at the product lookup, you will see the new short dated item with the inventory, along with the lot and expiration date information.

Product	Description	Available	LotNo	LotExpDate	StkUM	StkQTY	List	PrcUM	PrcQty	Sell Um	Sell Qty	Vendor
103135	Phentoin Sodium ER 100mg 1000ct	0			EA	1	25.000 EA		1 EA	1		MCKESS...
S103135	Phentoin Sodium ER 100mg 1000ct	5	092316	1/1/2017	EA	1	25.000 EA		1 EA	1		MCKESS...

The Pedigree is also updated.

When looking at the new pedigree, we have updated the Notes section alerting you to the transfer. Additionally, the Inbound pedigree information from the original pedigree is also transferred.

The screenshot shows a web application window titled "Pedigree Update". The interface includes a menu bar at the top with options like "File", "Edit", "Settings", "Reset", "Tools", "Mode", "Standard Functions", "Special Functions", "Refresh Dashboard", and "Help". On the left, there is a vertical navigation pane with buttons for "Shortcuts", "History", "Terminal", "MDS Menu", "Find", "Tasks", "Charts", and "Key Indicators". On the right, there is a vertical pane with buttons for "Product Lookup", "Customers", and "Vendors".

The main content area displays the following information:

- Pedigree ID:** 0000001069
- 1.PC#:** 01136037
- 2.Product#:** S103135 (Phentoin Sodium ER 100mg 1000ct)
- 3.Company:** 01 The Systems House, Inc.
- 4.Notes:** PEDIGREE TRANSFER FROM 0000001063 10/21/16
- 5.Shipment ID:** [Empty field]
- 6.Invoice#:** [Empty field]
- 7.Invoice Date:** [Empty field]
- 8.Manufacturer:** [Empty field]
- 9.NDC#:** [Empty field]
- 10.Dosage Form:** [Empty field]
- 11.Strength:** [Empty field]
- 12.Container Size:** [Empty field]
- 13.Lot#:** 092216
- Lot Qty:** 5

At the bottom of the main area, there is a prompt: "Please make a selection, OK/END to Save, or Cancel" and a yellow button. The text "PAGE 1 OF 4" is also visible.

The bottom of the window features a toolbar with icons for "Add Inbd", "Add Outbc", "Add Supp", "Scroll Dn", "Scroll Up", "Upd Rel", "Pending", "Help", "Ok/End", "Insert", "Delete", "Prev", "Next", "Inquiry", "Cancel", "Off", and "Popup". The status bar at the very bottom shows "The Systems House | Operator:EB Ready." and the date/time "10/21/2016 11:16" along with system indicators "CAP | NUM | SCRL".