

MDS Replenishment Procedure Guide – DJF 8/9/12

Overview: MDS Allows for Solid Case and Quick Pick (LUM) Areas (Low/Logical Unit of measure) using Primary and Backup Locations with Low Unit or Bulk Picking and Low Unit replenishment this procedure guides discusses setup for both JIT(Just in Time replenishment) and Nightly or scheduled replenishments to allow you to have a bulk or overstock location in your warehouse replenish an alternate location that is stocked in the same unit of measure. MDS also offer split (bulk and low) picking documents and multi warehouse replenishment but that will not be covered in this guide.

Step 1. Warehouse Setup

The screenshot shows the 'WAREHOUSE MAINTENANCE' screen for 'MDS Warehouse Maintenance'. The window title is 'AMD.12.TEST-EXTERNAL - [67.90.1.77-AMD.12.TEST-WAREHOUSE-MAINT008\$1]'. The menu bar includes File, Edit, Settings, Reset, Tools, GUI, Standard Functions, Special Functions, and Help.

Warehouse Maintenance Fields:

- Warehouse Number: 801
- 1. Warehouse Name: Replenishment Demo Wareho
- 2. Warehouse Addr 1: 123 Address Way
- 3. Warehouse Addr 2:
- 4. Warehouse Addr 3:
- 5. City: Clifton
- 6. State: NJ
- 7. Zip: 07013
- 8. Owning Company: 01 AMERICAN MEDICAL DEPOT
- 9. Phone Number:
- 10. Tax Jurisdiction: 00004 RESELLER/WHOLESALE
- 11. Transfer Cust#:
- 38. Trans Shipping Warehouses:
- 39. GLN Number:
- Bill Cust:

Warehouse Management Parameters:

Warehouse Management	Parameters	Value
12. Location Control	L	21. Redirect if not in Bulk: N
13. Wireless Picking	N	22. OE Replen to Max: Y
14. Bulk Redirection	N	23. Putaway Method: N
15. Receiving Method	B	24. Track WO InUse: N
16. IM Replen Method	1	25. Replenishment Method: N
17. Single Product	Y	26. Putaway Print: N
18. Prim Replen Method	M	27. LOT Purge Days: 720
19. Remove Location Flg	N	28. Replen at Receipt: Y
20. Replen Case Rounding	U	29. Replen by Zone: N
		30. Interface Type: P
		31. Wireless Tote:
		32. Tote Purge Days: 0
		33. Replenish Bulk: N
		34. Putaway Loc Sort: Y
		35. Wireless PA Opt: N
		36. Rcv Label at Line: N
		37. Pick by Zone: N

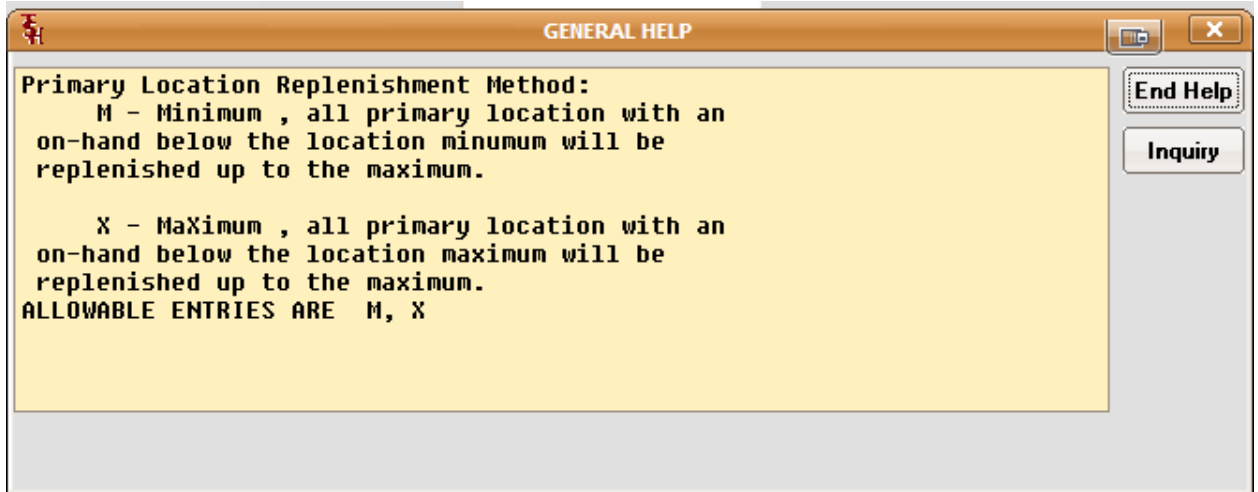
ENTER LINE # TO CHANGE,DELETE TO DELETE,0 TO ACCEPT

XXXXXXXX PAGE 1 OF 3

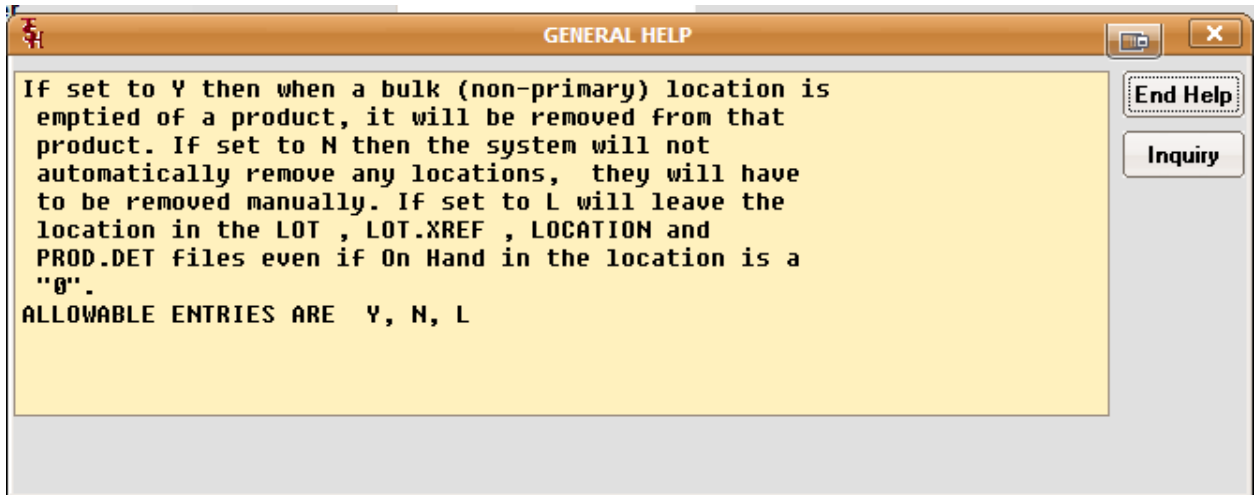
Buttons: HELP, OK/END, INSERT, LDELETE, PREV PG, NEXT PG, INQUIRY, CANCEL, Off, Userfile, Popup

You will need to following items setup for this example

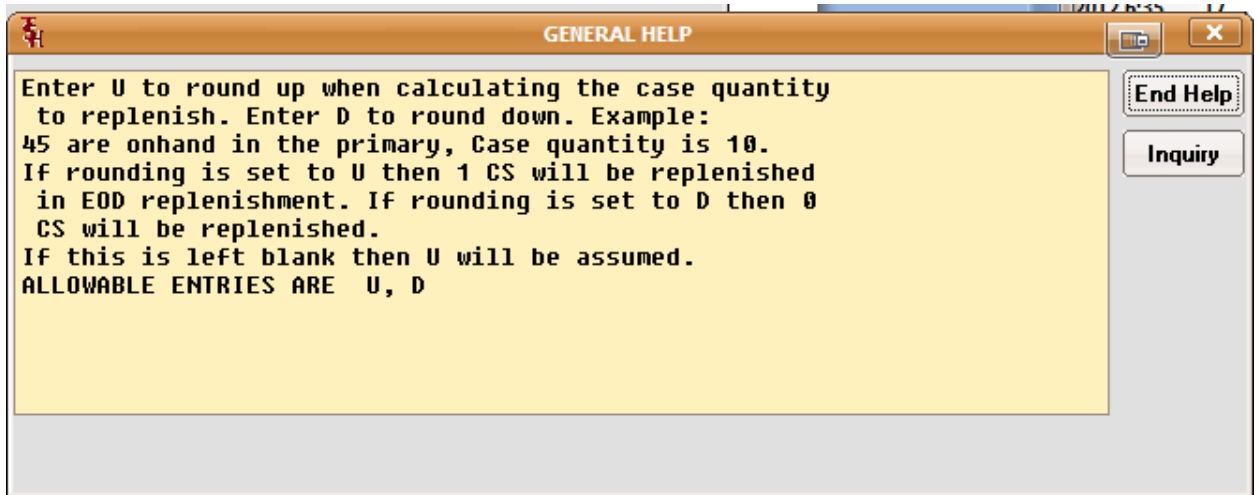
1. Location control must be "L"
2. Bulk Redirection should be "N"
3. Single Product (per location) should be "Y"
4. Prim Replenish should be set as "X" (Maximum) – you can modify as needed.



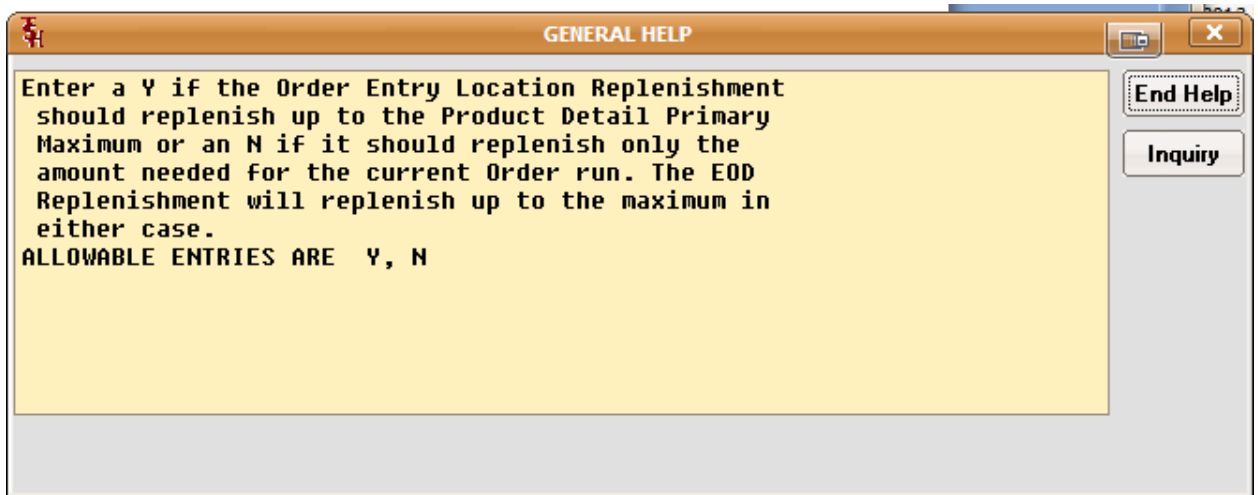
5. Remove Location Flag should be set as a "Y" – this will allow you to not have static overflow locations and use a random putaway function to maximize space .



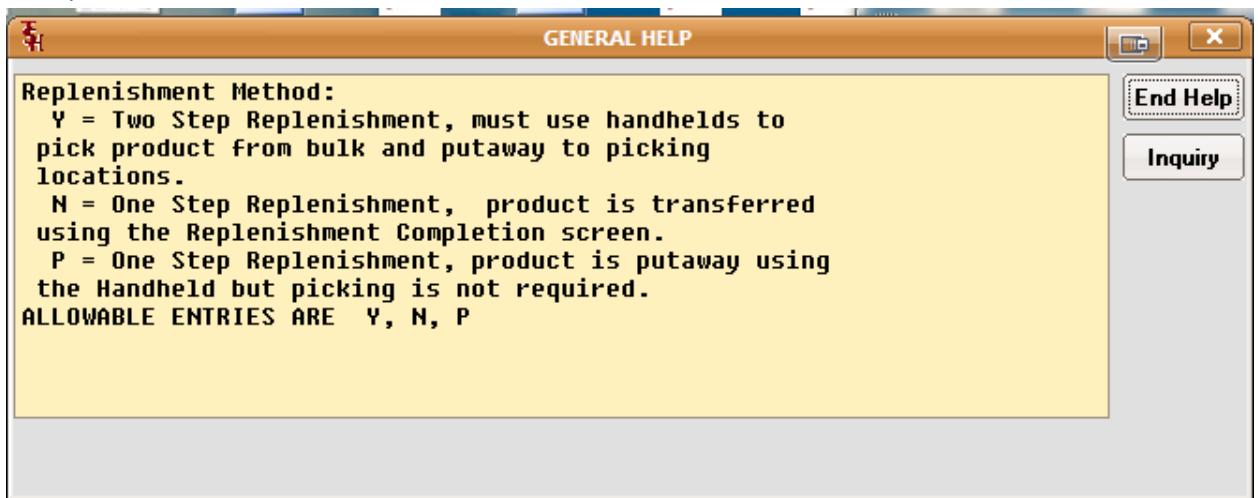
6. Replen Case Rounding should be set to "D" this will round down so you do not exceed to space in your primary pick locations



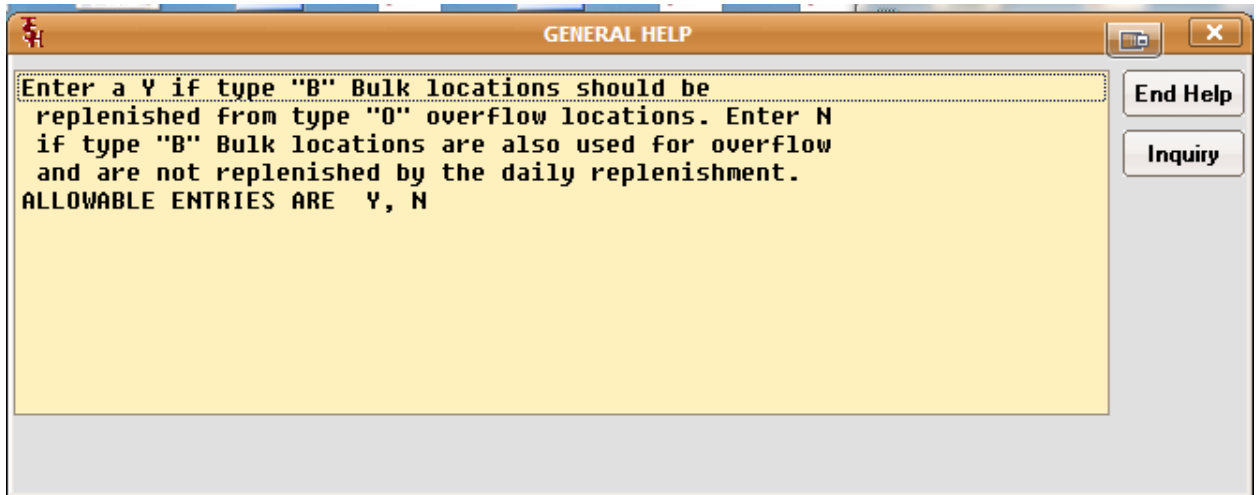
7. OE Replen to Max – this is a just in time replenishment during a pick ticket run and should be set to a “N” we will have a nightly replenishment to bring our location levels back in line.



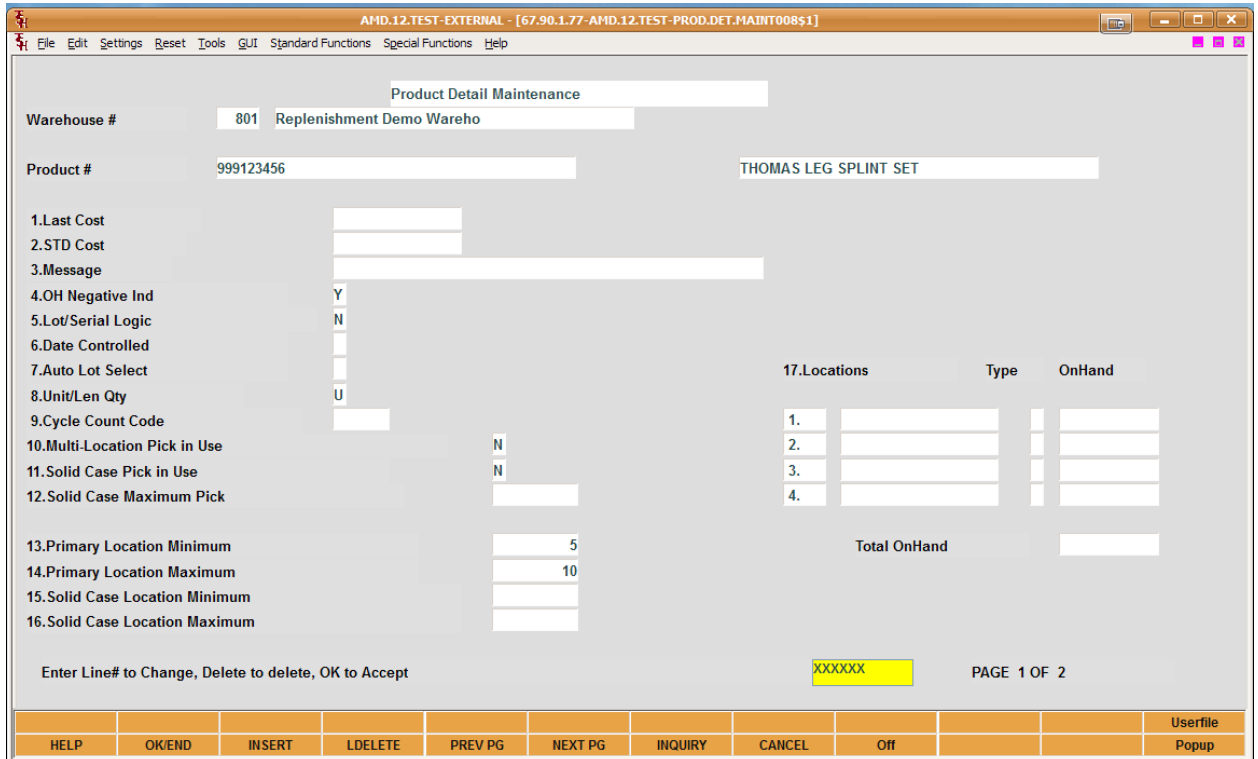
8. Replenishment Method should be set as “N”



9. Replenish from Bulk should be set as “N” in this guide we will manually be putting inventory away to a random bulk location based upon current space availability



Step 2. Setting up your product using product detail maintenance



1. Multi location pick in use is "N" – we will always be picking from the primary location
2. Solid Case Pick in use should be set to "N"
3. Primary Location Maximum should be set to the maximum amount you want in the quick pick area or primary location for this item Example 10
4. Primary Location Minimum should be set to the minimum before triggering a replenishment in this case 5

Step 3 Setting up your locations (Primary and Bulk)

AMD.12.TEST-EXTERNAL - [67.90.1.77-AMD.12.TEST-LOCATION-MAINT010\$1]

File Edit Settings Reset Tools GUI Standard Functions Special Functions Help

LOCATION MASTER FILE

Warehouse Replenishment Demo Wareho

Location

1.Physical Location

2.Warehouse Zone

3.Environment Code STD WAREHOUSE

4.Type

5.Size

6.Limit **Note: Environment and Type cannot be changed if this Location is not empty.**

7.Levels

8.Picking Type

9.Replen Type

10.Multiple Products

11.Std Packaging

12.Location Minimum 13.Location Maximum

14.Products	OnHand	Volume	% Capacity
<input type="text"/>	<input type="text"/>	<input type="text"/>	<input type="text" value="0.00"/>
<input type="text"/>	<input type="text"/>	<input type="text"/>	<input type="text" value="0.00"/>
<input type="text"/>	<input type="text"/>	<input type="text"/>	<input type="text" value="0.00"/>

15.Length 18.Case Qty

16.Width 19.Pick Sort Key

17.Height 20.Putaway Sort Key

ENTER LINE # TO CHANGE,DELETE TO DELETE,0 TO ACCEPT

Totals

Total Volume (Cubic Feet)

XXXXXX

NEW Loc										
HELP	OK/END	INSERT	LDELETE	PREV PG	NEXT PG	INQUIRY	CANCEL	Off		Popup

Setup your first location our example is AA-AA-AA-BB This is our Bulk Location with lots of space so we will store our pallets or bulk amounts here.

1. Type will need to be B for Bulk
2. Replen Type will be "M" for manual
3. Multiple Products will be "N" for no
4. Location Minimum and Maximum should be setup to accommodate the amount of product you can handle in this location in my example 5 and 10 Cases
5. Setup the Length, Width, and Height in inches for the location this will assist in capacity planning and put away later on.
6. Leave Case Qty blank – this is for overrides only.

AMD.12.TEST-EXTERNAL - [67.90.1.77-AMD.12.TEST-LOCATION-MAINT010\$1]

File Edit Settings Reset Tools GUI Standard Functions Special Functions Help

LOCATION MASTER FILE

Warehouse 801 Replenishment Demo Wareho

Location AA-AA-AA-BC

1.Physical Location Primary

2.Warehouse Zone

3.Environment Code 01 STD WAREHOUSE

4.Type P

5.Size

6.Limit 0

7.Levels 0

8.Picking Type

9.Replen Type M

10.Multiple Products N

11.Std Packaging EA

12.Location Minimum 5 13.Location Maximum 10

14.Products

OnHand	Volume	% Capacity
	0.000	0.00
	0.000	0.00
	0.000	0.00

15.Length 24 18.Case Qty 10

16.Width 12 19.Pick Sort Key 000000

17.Height 12 20.Putaway Sort Key 000000

ENTER LINE # TO CHANGE,DELETE TO DELETE,0 TO ACCEPT

XXXXXX

NEW Loc										
HELP	OK/END	INSERT	LDELETE	PREV PG	NEXT PG	INQUIRY	CANCEL	Off		Popup

Setup your second location our example is AA-AA-AA-BC This is our primary location this will be used for picking

1. Type will need to be "P" for primary
2. Replen Type will be "M" for manual
3. Multiple Products will be "N" for no
4. Location Minimum and Maximum should be setup to accommodate the amount of product you can handle in this location in my example 100 and 500 Cases
5. Setup the Length, Width, and Height in inches for the location this will assist in capacity planning and put away later on.
6. Leave Case Qty blank – this is for overrides only.

Step 4. Update your product detail record with your new bulk locations and primary locations

AMD.12.TEST-EXTERNAL - [67.90.1.77-AMD.12.TEST-PROD.DET.MAINT008\$1]

File Edit Settings Reset Tools GUI Standard Functions Special Functions Help

Product Detail Maintenance

Warehouse # Replenishment Demo Wareho

Product #

1.Last Cost

2.STD Cost

3.Message

4.OH Negative Ind

5.Lot/Serial Logic

6.Date Controlled

7.Auto Lot Select

8.Unit/Len Qty

9.Cycle Count Code

10.Multi-Location Pick in Use

11.Solid Case Pick in Use

12.Solid Case Maximum Pick

13.Primary Location Minimum

14.Primary Location Maximum

15.Solid Case Location Minimum

16.Solid Case Location Maximum

17.Locations	Type	OnHand
1. AA-AA-AA-BC	P	<input type="text"/>
2. AA-AA-AA-BB	B	<input type="text"/>
3. <input type="text"/>	<input type="text"/>	<input type="text"/>
4. <input type="text"/>	<input type="text"/>	<input type="text"/>
Total OnHand		<input type="text"/>

Do you want to go to the User Screen (Y/N)?

PAGE 1 OF 2

HELP	OK/END	INSERT	LDELETE	PREV PG	NEXT PG	INQUIRY	CANCEL	Off	Userfile	Popup
------	--------	--------	---------	---------	---------	---------	--------	-----	----------	-------

Step 5 move inventories into the bulk location and primary

AMD.12.TEST-EXTERNAL - [67.90.1.77-AMD.12.TEST-LOCATION/ADJUST011\$1]

File Edit Settings Reset Tools GUI Standard Functions Special Functions Help

Location	Adjustment	Posting
Warehouse	: 801	Replenishment Demo Wareho
Product Number	: 999123456	
Current Location	:	<input type="text" value="THOMAS LEG SPLINT SET"/>
On Hand in Warehouse	<input type="text" value="500"/>	On Hand in Location <input type="text"/>
In Pick in Warehouse	<input type="text" value="0"/>	In Pick In Location <input type="text"/>
1.Adjustment Quantity	<input type="text" value="0"/>	
2.Reason Code	<input type="text"/>	

CS Qty BX Qty PK Qty

Product is not in this Location , OK (Y/N)

Stk Stat	HELP	OK/END	INSERT	LDELETE	PREV PG	NEXT PG	INQUIRY	CANCEL	Off	Popup
----------	------	--------	--------	---------	---------	---------	---------	--------	-----	-------

If it prompts you to put the product into your new location say "Y"

AMD.12.TEST-EXTERNAL - [67.90.1.77-AMD.12.TEST-LOCATION|ADJUST01191]

File Edit Settings Reset Tools GUI Standard Functions Special Functions Help

Location	Adjustment	Posting
Warehouse	:	801 Replenishment Demo Wareho
Product Number	:	999123456
Current Location	:	AA-AA-AA-BC THOMAS LEG SPLINT SET
On Hand in Warehouse		500 On Hand in Location
In Pick in Warehouse		0 In Pick In Location
1.Adjustment Quantity		8
2.Reason Code		01 UPDATE PHYSICAL INVENTORY

CS Qty 1 BX Qty 1 PK Qty 1

ENTER LINE # TO CHANGE,DELETE TO DELETE,0 TO ACCEPT 0

Stk Stat											
HELP	OK/END	INSERT	LDELETE	PREV PG	NEXT PG	INQUIRY	CANCEL	Off			Popup

Step 5. Test the nightly replenishment - currently we have 4 in our primary but our min is 5 and it will create a replenishment for 6 to bring us up to our max of 10 .

AMD.12.TEST-EXTERNAL - [67.90.1.77-AMD.12.TEST-LOCATOR.MENU]

File Edit Settings Reset Tools GUI Standard Functions Special Functions Help

Account:AMD.12.TEST Port:020 Menu:LOCATOR.MENU Capture:On

Warehouse Management Selector

Location Maintenance	Picker Statistics Detail Report
Location Labels	Picker Statistics Summary Report
Environment Maintenance	Verification
Location Adjustment	Shipping Update
Location Movement	Batch Shipping Update
Location Lot Movement	Packing Slip
Location Report Menu	Void Shipment
Purchase Order Receiving Form	Manifest System
Purchase Order Receipts Menu	Carousel Exception Report
Batch Pick Ticket Print	Pick Ticket Assign Batch Date Rpt
Replenishment - Orders to Be Picked	Quick Count Inventory Menu
Batch Pick Ticket Reprint	Replenishment Report Reprint
Replenishment - Nightly Run	Reprint Pack Labels
Replenishment Labels	
Replenishment Completion	
Batch Pick Report	
Replenishment Assignment	
Pick Ticket Assignment Inquiry	
Pick Ticket Assignment Update	

Enter Selection or END :

OE	CONTACTS	MAINT	DRILL	EXECINQ	REPORTS	CAPT OFF	VIEW	CRM.MENU	VRM.MENU		
HELP	OK/END	INSERT	LDELETE	PREV PG	NEXT PG	INQUIRY	CANCEL	Off			Popup

AMD.12.TEST-EXTERNAL - [67.90.1.77-AMD.12.TEST-EOD.REPL.RPT012\$1]

File Edit Settings Reset Tools GUI Standard Functions Special Functions Help

Replenishment Report - Nightly Run Capture:On

1. Warehouse

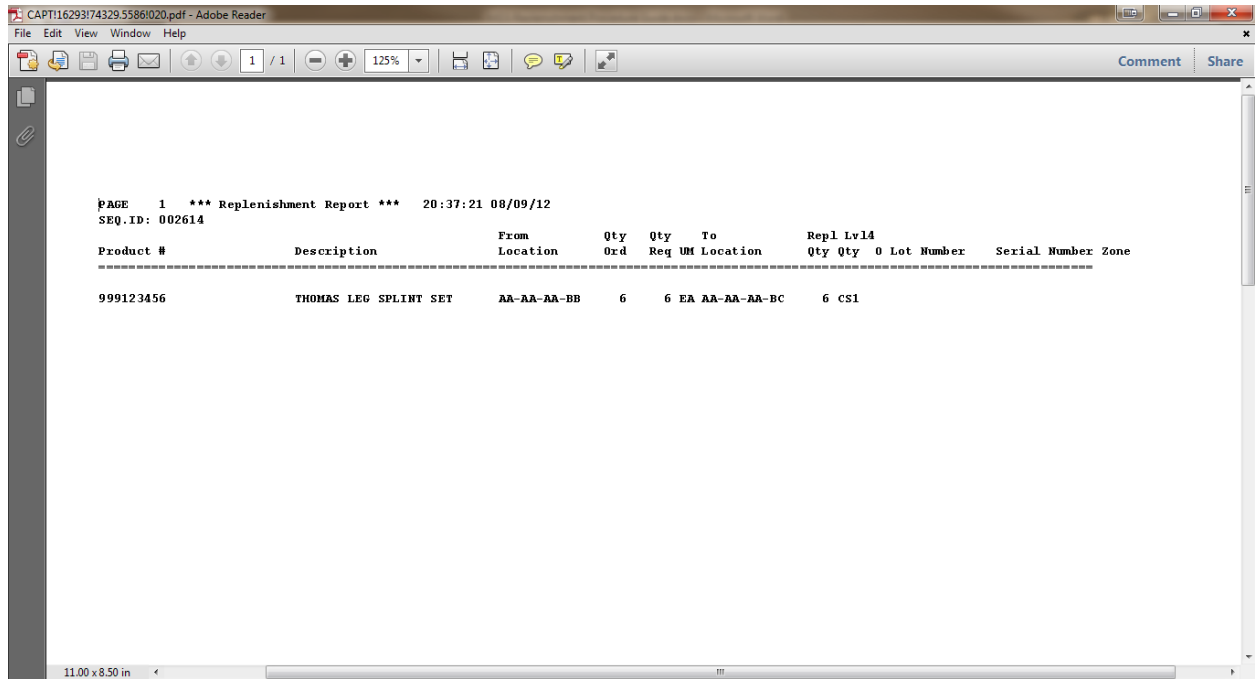
2. Location

3. Delete Items Not Yet Accepted (Y/N)

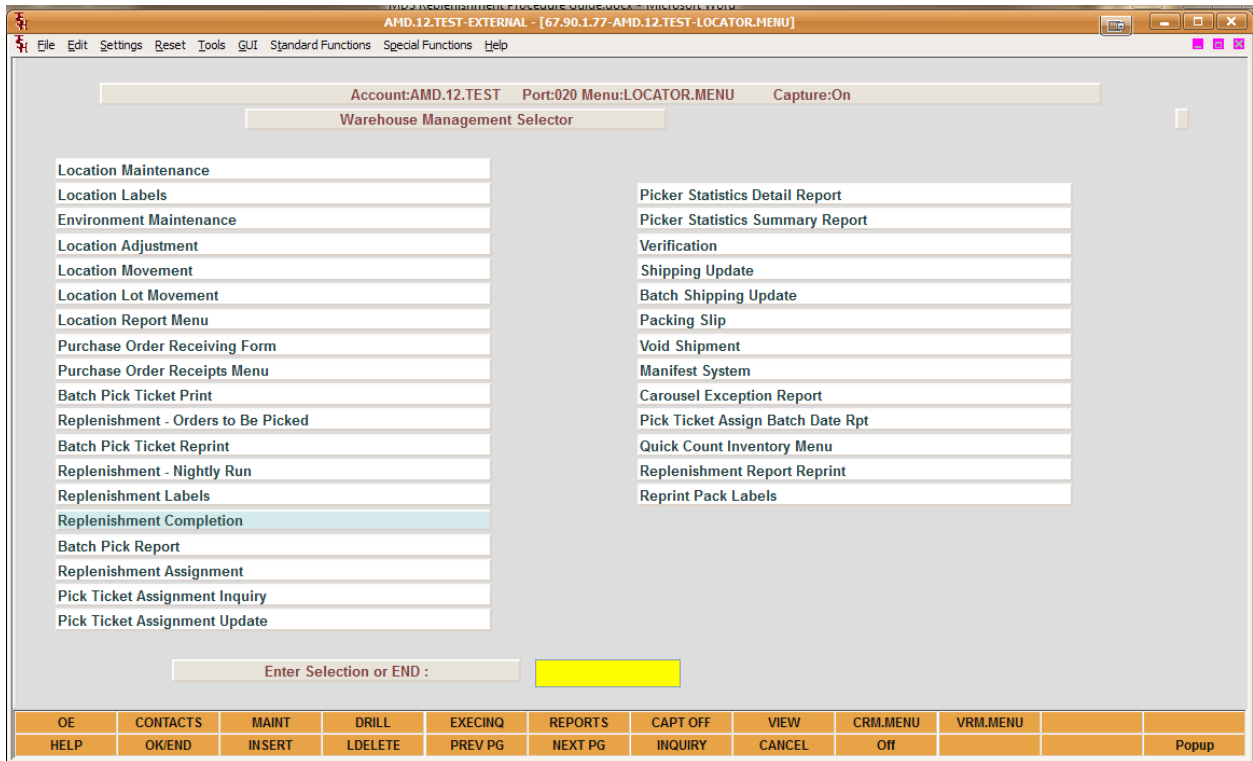
Press <RETURN> to Process Report, Line# to Change, or ABORT

HELP	OK/END	INSERT	LDELETE	PREV PG	NEXT PG	CAPT OFF	INQUIRY	CANCEL	Off		Popup
------	--------	--------	---------	---------	---------	----------	---------	--------	-----	--	-------

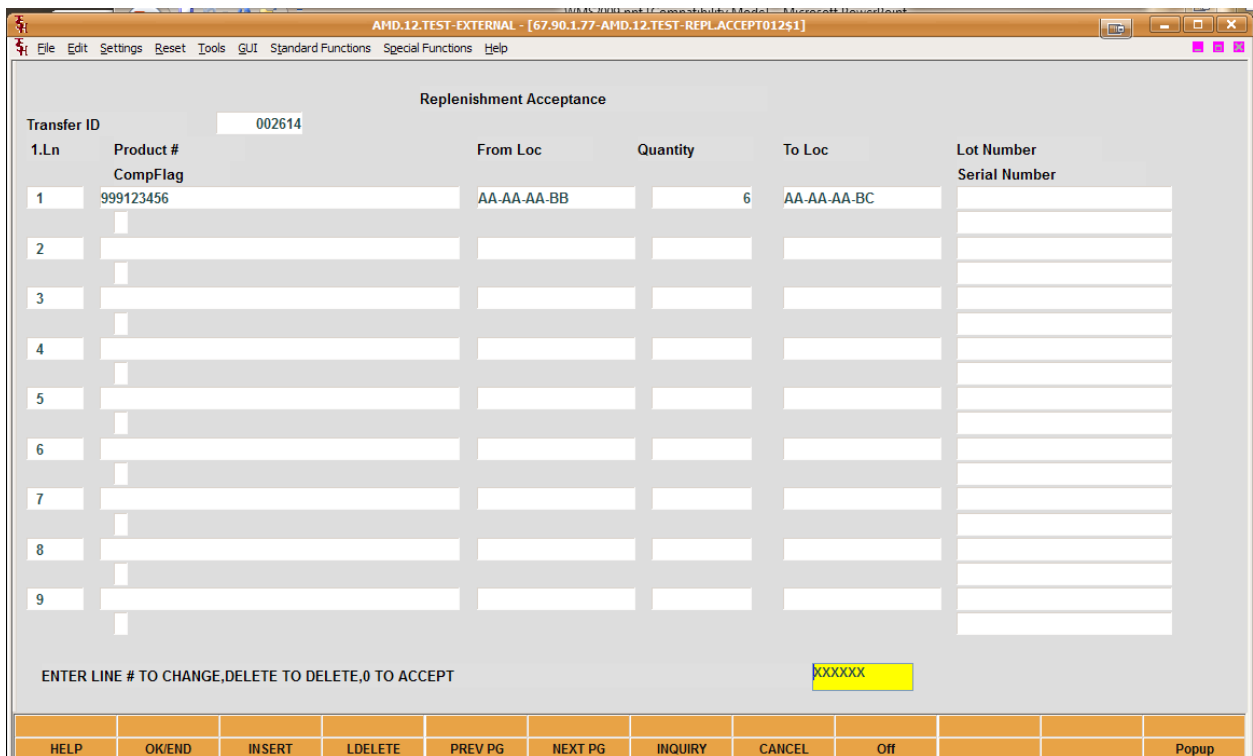
REVIEW YOUR replenishment report for nightly replenishment



Then accept or change the quantity using replenishment completion/acceptance



Choose menu option for replenishment completion



For testing purposes we updated the 6 it was supposed to transfer to 4

AMD.12.TEST-EXTERNAL - [67.90.1.77-AMD.12.TEST-REPL_ACCEPT01251]

File Edit Settings Reset Tools GUI Standard Functions Special Functions Help

Replenishment Acceptance

Transfer ID: 002614

1.Ln	Product # CompFlag	From Loc	Quantity	To Loc	Lot Number Serial Number
1	999123456	AA-AA-AA-BB	4	AA-AA-AA-BC	
2					
3					
4					
5					
6					
7					
8					
9					

Are you sure you want to update this Transfer? (Y/N)

HELP	OK/END	INSERT	LDELETE	PREV PG	NEXT PG	INQUIRY	CANCEL	Off	Popup
------	--------	--------	---------	---------	---------	---------	--------	-----	-------

Then answer "Y" to update the transfer

AMD.12.TEST-EXTERNAL - [67.90.1.77-AMD.12.TEST-REPL_ACCEPT01251]

File Edit Settings Reset Tools GUI Standard Functions Special Functions Help

Replenishment Acceptance

Transfer ID: 002614

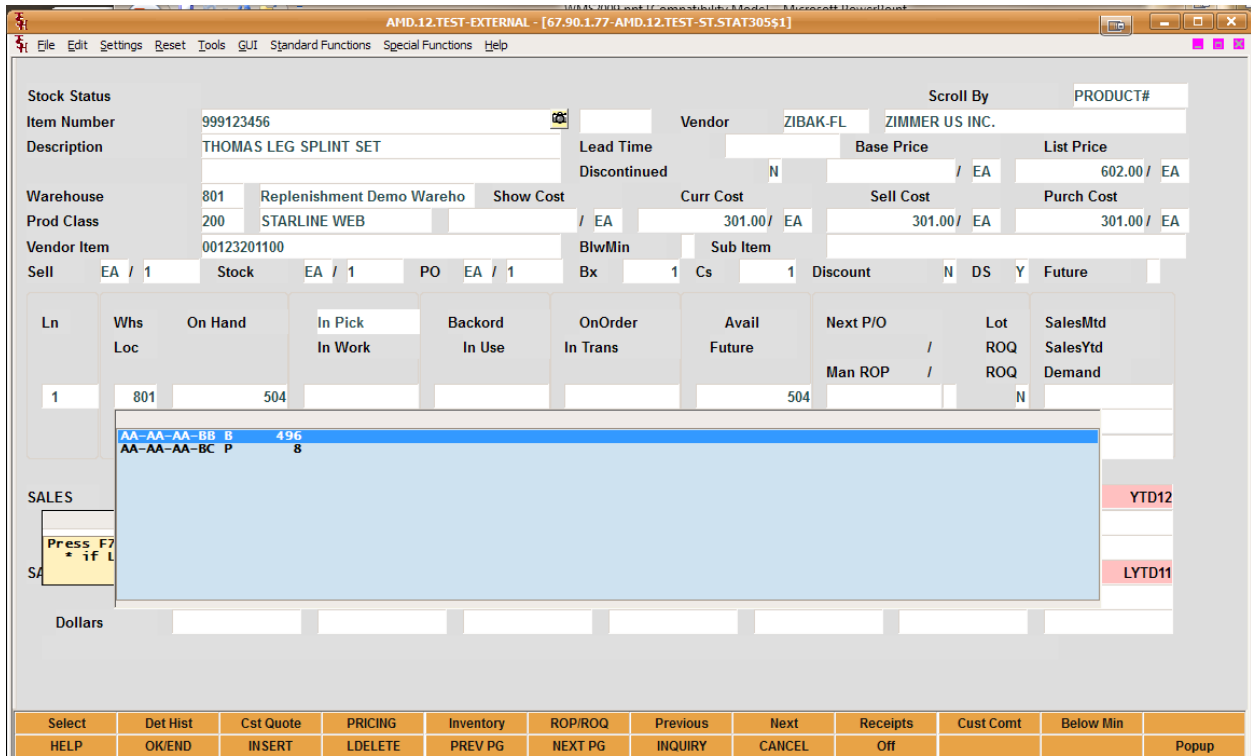
1.Ln	Product # CompFlag	From Loc	Quantity	To Loc	Lot Number Serial Number
1	999123456	AA-AA-AA-BB	4	AA-AA-AA-BC	
2					
3					
4					
5					
6					
7					
8					
9					

Enter Y to complete the replenishment and transfer all quantities.

HELP	OK/END	INSERT	LDELETE	PREV PG	NEXT PG	INQUIRY	CANCEL	Off	Popup
------	--------	--------	---------	---------	---------	---------	--------	-----	-------

Then enter "Y" to replenish – note – this assumes you physically moved the items using the replenishment report .

Verify your quantity shows up ok. – previously we had 500 in bulk we now moved it down.



The Next phase is testing the JIT or Real Time replenishment – this process runs before every pick ticket print and if need be will advise a picker to move items prior to starting to pick your tickets.

This will require some timing in your warehouse as they will have to move items prior to picking depending on your min and max setup

First update the Warehouse File

OE Replen to Max – this is a just in time replenishment during a pick ticket run and should set to a “Y” we will have a nightly replenishment to bring our location levels back in line and this will update the replenishments for the system based upon min’s and max’s not just what was ordered

NOTE :

Y = OE Replenishment to the Product Primary Maximum

N = OE replenishment for only that Order Batch

At this point our primary is over the min of "5" we setup, so we need to order enough to have it send it below our min of 5. – in this case we have 8 in our primary so we ordered 6 which will bring our primary down to 2 trigger a jit replenishment of 8 to get us back to 10

AMD.12.TEST-EXTERNAL - [67.90.1.77-AMD.12.TEST-DET.00305\$1]

File Edit Settings Reset Tools GUI Standard Functions Special Functions Help

Detail Order Inquiry (Line Items)

Order# 01217901 Ord Date 08/09/12 Due Date 08/09/12 Customer# DFAS TEST CUST DODDMLSST Ship To DFAS TEST CUST

ATTN: TEST ATTN: TEST TEST

Rels 001 Lns 1 ST OP Fut N DS ND OS BI TEST TEST FL TEST FL

Trn 33014 CRM 33014

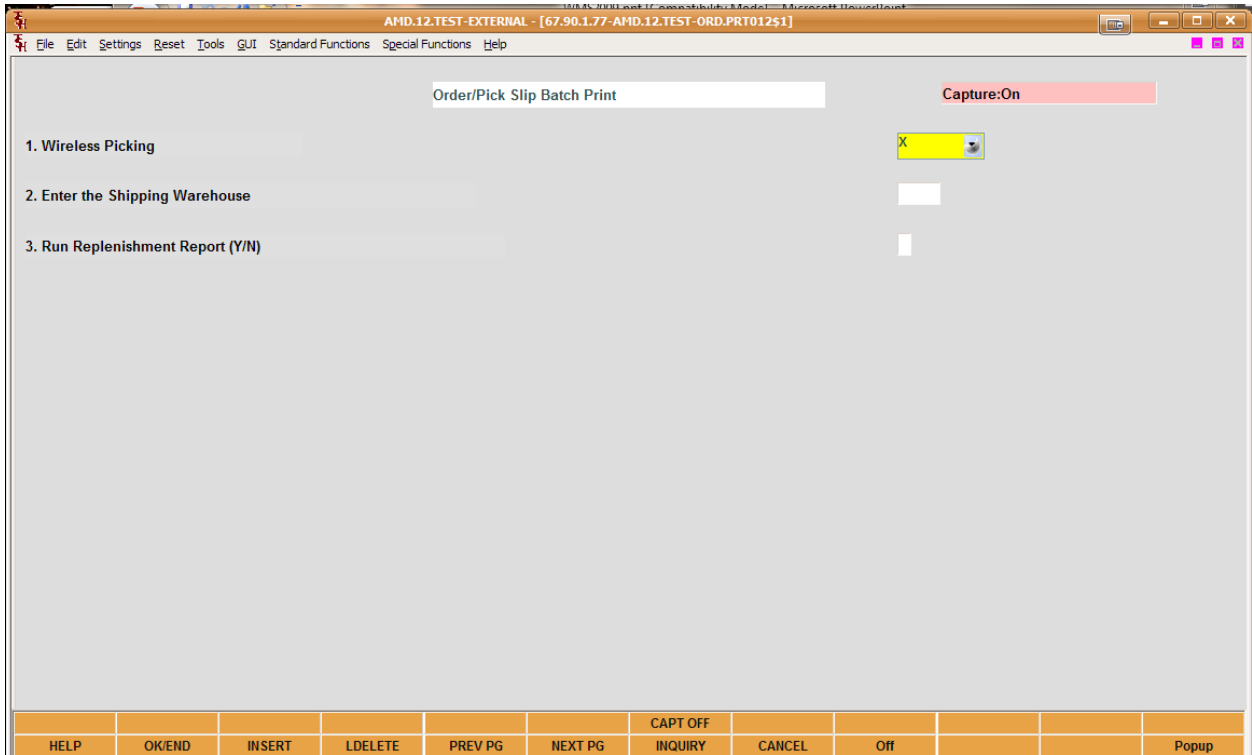
PO# DSADA Terms NET 15 Sls 115 SUKRIT AGRAWAL

Ln#	Item Number	Ordered	Shipped	Bkord	Inpick	Price	Value
1	999123456 THOMAS LEG SPLINT SET	6 / EA	801 / EA		6	344.00 / EA	2064.00
2		/	/			/	
3		/	/			/	
4		/	/			/	
TOTAL							2064.00

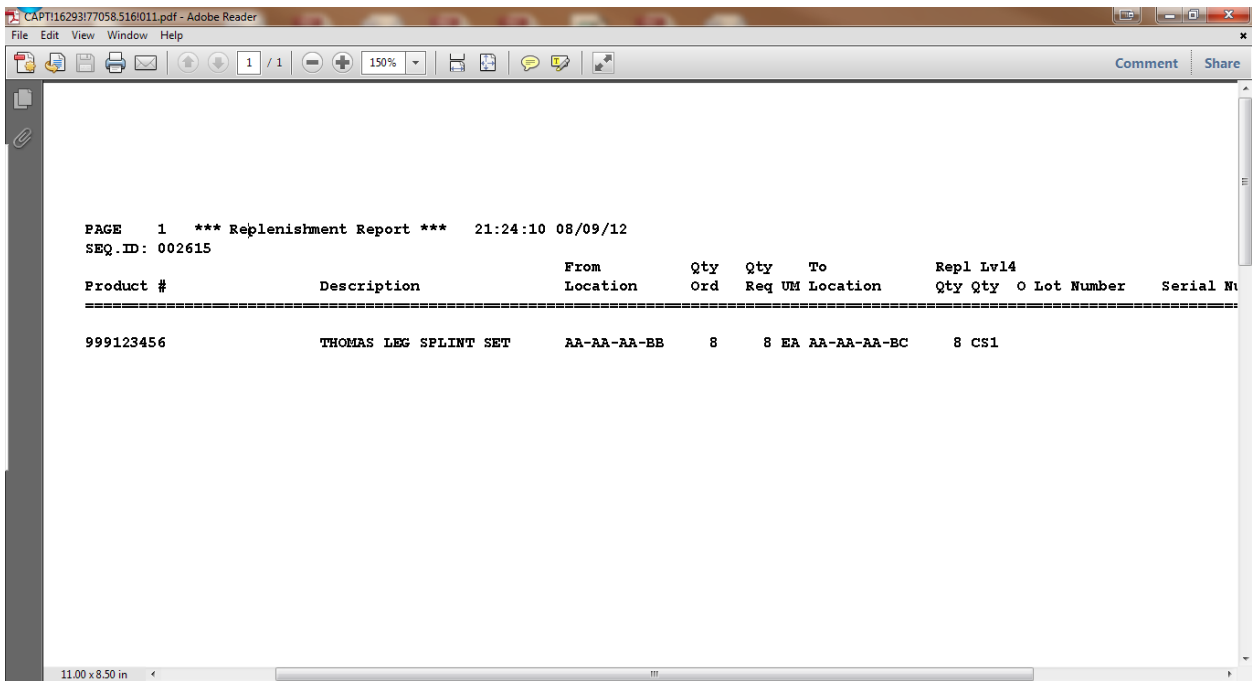
Enter END to exit, NEXT PG or PREV PG : XXXXXX PAGE 1 OF 2

HEADER	LINE ITEMS	INV INQ	NEXT ORD	PREV ORD	SPEC INST	AUDIT LST	SERIALS	ORDER CRM		
HELP	OK/END	INSERT	LDELETE	PREV PG	NEXT PG	INQUIRY	CANCEL	Off		Popup

During the standard order print answer "Y" to run the replenishment report



AFTER the pick ticket run - we will see a new replenishment report with the amounts to be transferred



We can then physically move the items and pick the order since it assumes the order will be picked first it replenished up to 10 which is our max for the location/product .

If we do not pick the items we would not have enough space – but in this instance the next order will have the max in there

Depending on your max's and min this option may not be needed and can be turned off in the warehouse maintenance.

If turned to “N” the system will only create the replenishment if the qty ordered drives your item below your primary minimums.