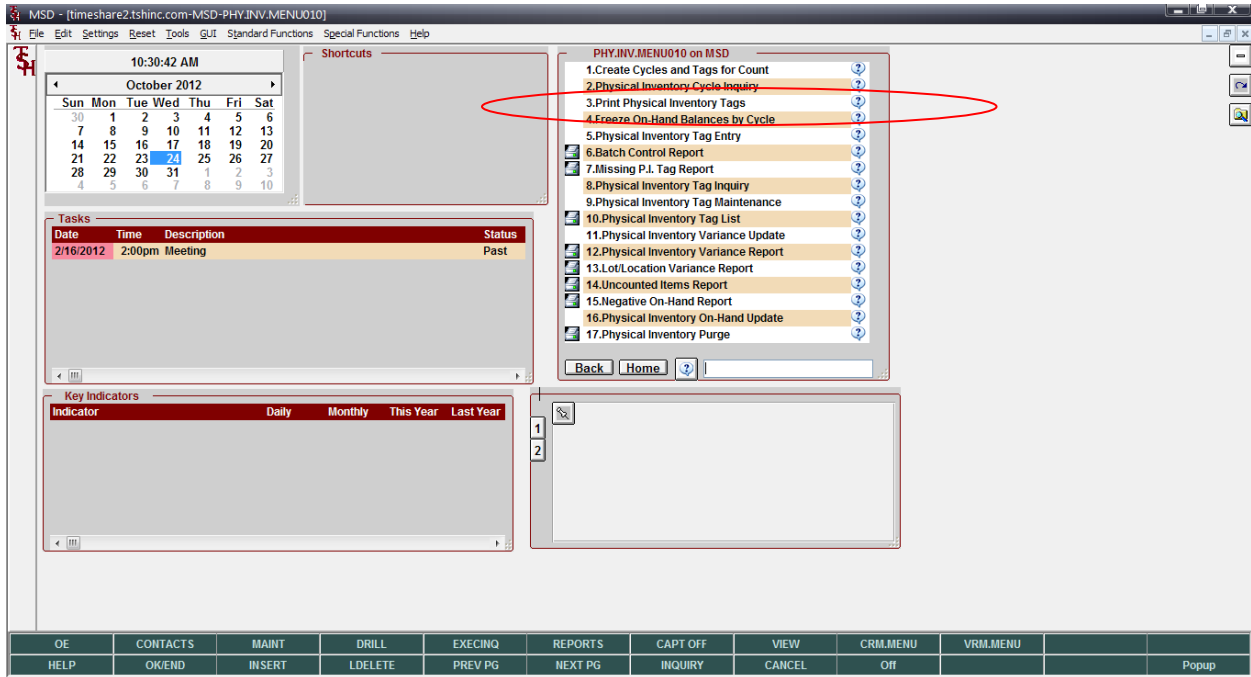


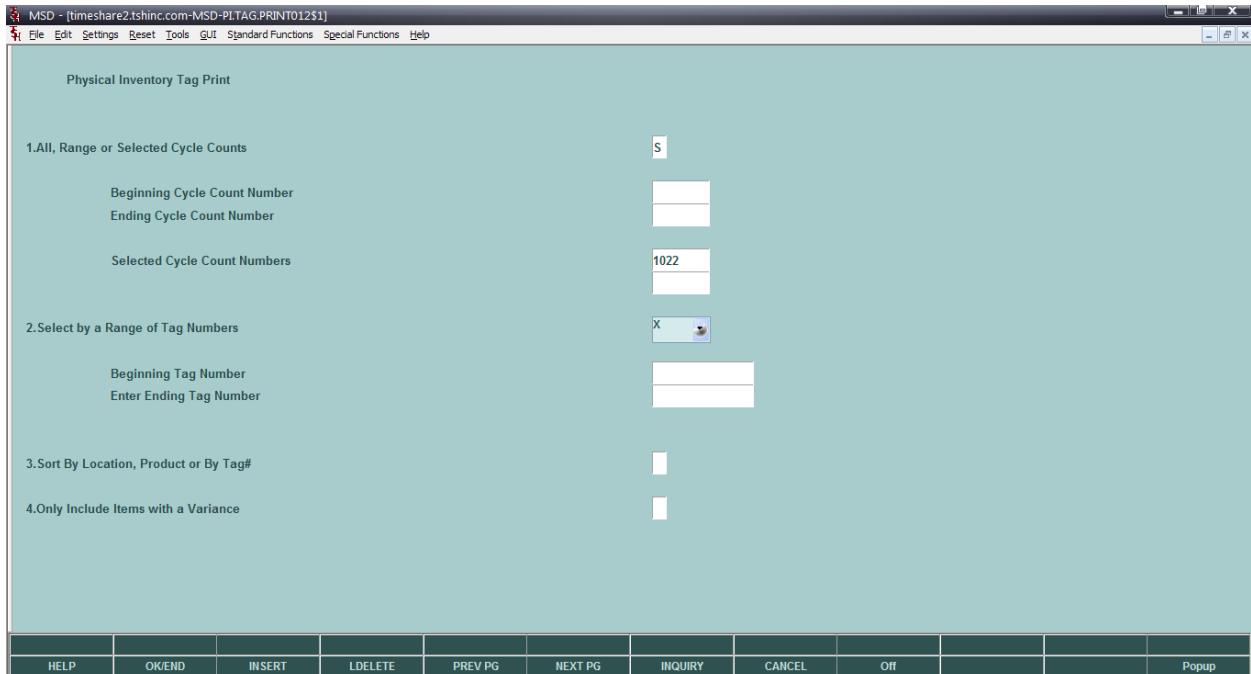


3. The next step is to print the Physical Inventory Tags.



4. Physical Inventory Tag Print:

1. Selecting the cycles to print tags for. Choose "A" for All, "R" for Range, or "S" for Selected Counts.
  - a. If selecting "A", then you will be brought to #2.
  - b. If selecting "R", then you will enter the beginning and ending cycle count numbers.
  - c. If selecting "S", then you will enter the cycle count numbers.



5. Physical Inventory Tag print (continued)

2. Select by a Range of Tag Numbers

- a. If you have a specific range of tag numbers you want to print, enter "Y". Otherwise, hit <ENTER>. If you have entered "Y", you will then input the beginning and ending tag numbers.

The screenshot shows a terminal window titled "MSD - [timeshare2.tshinc.com-MSD-PLTAG.PRINT012\$1]". The main area is titled "Physical Inventory Tag Print" and contains the following options and input fields:

- 1.All, Range or Selected Cycle Counts: A selection box with "S" entered.
- Beginning Cycle Count Number: An empty input field.
- Ending Cycle Count Number: An empty input field.
- Selected Cycle Count Numbers: An input field containing "1022".
- 2.Select by a Range of Tag Numbers: A selection box with "N" entered.
- Beginning Tag Number: An empty input field.
- Enter Ending Tag Number: An empty input field.
- 3.Sort By Location, Product or By Tag#: A dropdown menu with "X" selected.
- 4.Only Include Items with a Variance: An empty input field.

At the bottom of the screen is a control panel with the following buttons: HELP, OK/END, INSERT, LDELETE, PREV PG, NEXT PG, INQUIRY, CANCEL, Off, and Popup.

6. Physical Inventory Tag print (continued)

- 3. Tag sorting options. Sort by Location, Product or by Tag#. Enter "L" to sort by location. Enter "P" to sort by product number. Enter "T" to sort by Tag#.

The screenshot shows a terminal window titled "MSD - [timeshare2.tshinc.com-MSD-PLTAG.PRINT012\$1]". The main area is titled "Physical Inventory Tag Print". It contains four sections:

- 1. All, Range or Selected Cycle Counts: A dropdown menu shows "S". Below are input fields for "Beginning Cycle Count Number", "Ending Cycle Count Number", and "Selected Cycle Count Numbers" (containing "1022").
- 2. Select by a Range of Tag Numbers: A dropdown menu shows "N". Below are input fields for "Beginning Tag Number" and "Enter Ending Tag Number".
- 3. Sort By Location, Product or By Tag#: A dropdown menu shows "L".
- 4. Only Include Items with a Variance: A dropdown menu shows an empty field.

At the bottom, there is a navigation bar with buttons: HELP, OK/END, INSERT, LDELETE, PREV PG, NEXT PG, INQUIRY, CANCEL, OFF, and Popup.

7. Physical Inventory Tag print (continued)

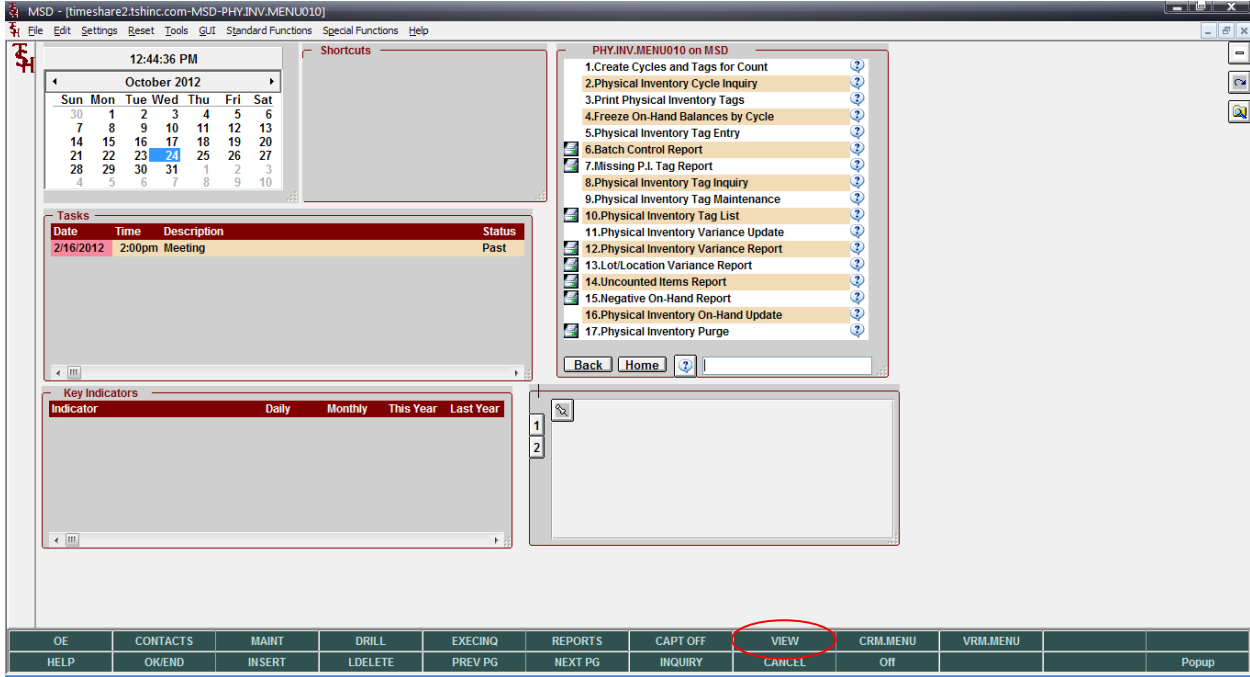
- 4. Only Include Items with a Variance. Enter "Y" or "N". The default is "N". This is used when reprinting tickets once a count has already been entered.

This screenshot is similar to the previous one, but the dropdown menu for "4. Only Include Items with a Variance" now shows "N". Additionally, a text prompt "Press <RETURN> to Print Tags or Cancel" is visible above a text input field containing "XXXXXX".

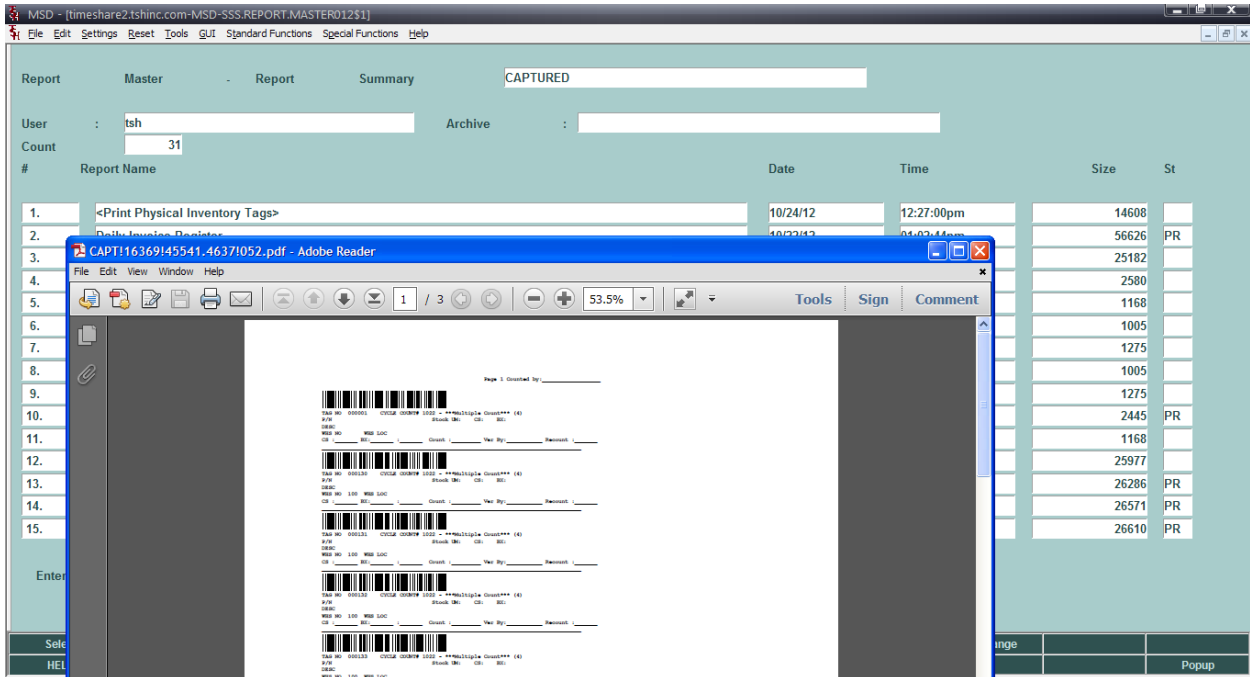
8. Physical Inventory Tag print (continued)

- a. When complete, hit <ENTER> to print the tags to your specified printer. In my example I have selected CAPTURE, so I will need to print the tags from Report Capture.

9. Retrieve and Print Tags from Report Capture. Click on VIEW.



10. Right click the report name to create the PDF.



11. Print the PDF document.