

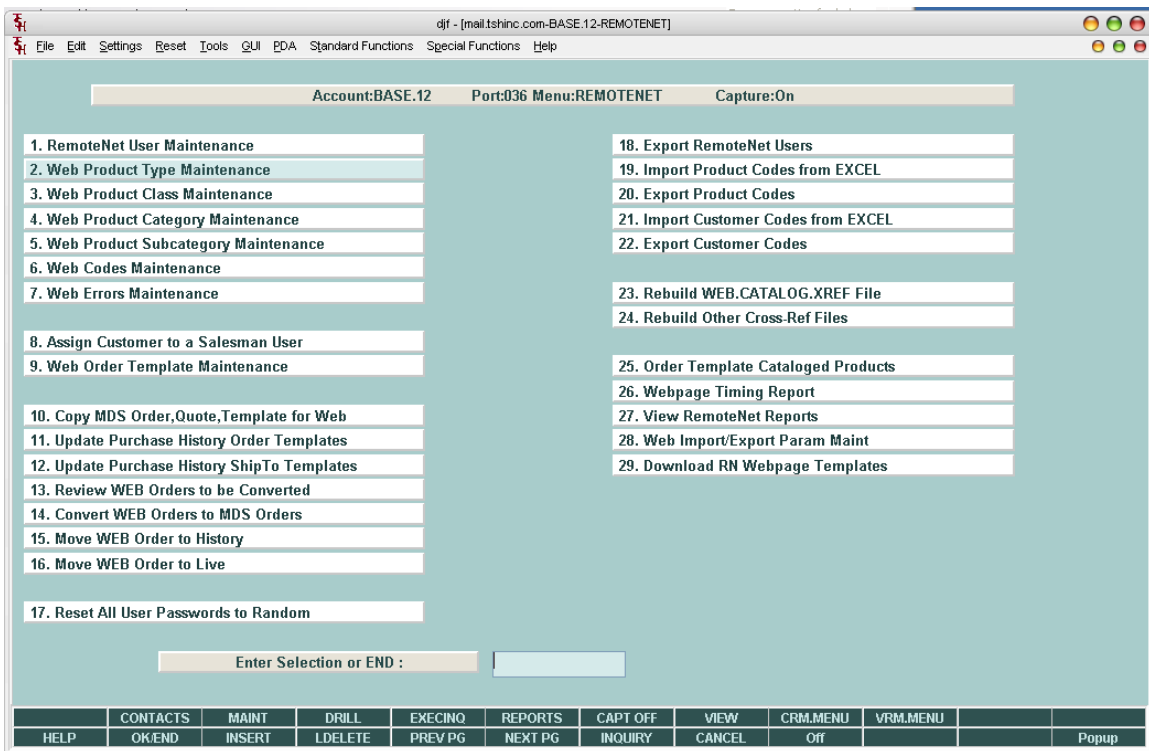
Steps to setup new Web Templates in Remotenet 6.0
Djf 10/29/2009

<http://hosting.tshinc.com/crs/guides/videos/rn6.0-training/rn6.0-Training.html>

you can also download the mp4

<http://hosting.tshinc.com/crs/guides/videos/rn6.0-training/rn6.0-Training.mp4>

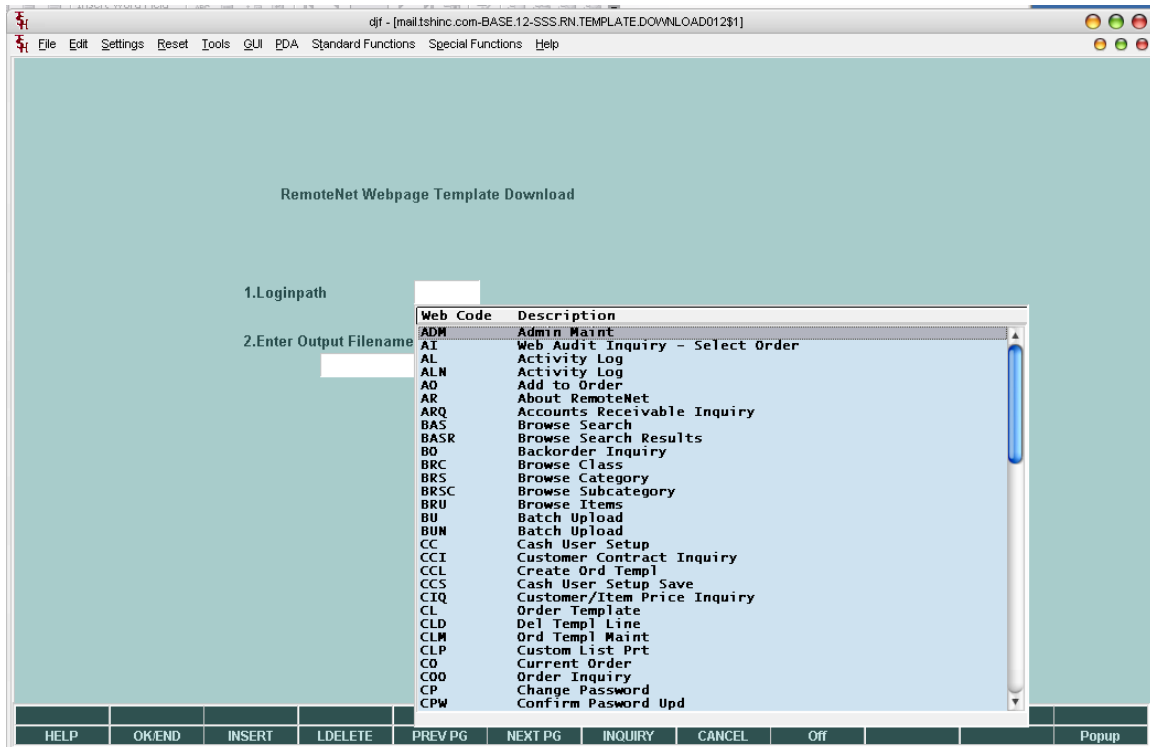
Step 1. – Export the Page to your PC or someplace you would like to Edit your Templates on



2. Choose Option 29. Download RN Webpage Templates

Each page in remotenet has a title and a “loginpath” – the login path is an alphanumeric code that relates to the page and hold information like the page title etc etc .
The WEB.CODES file holds all this information and the KEY or ID field is the Loginpath

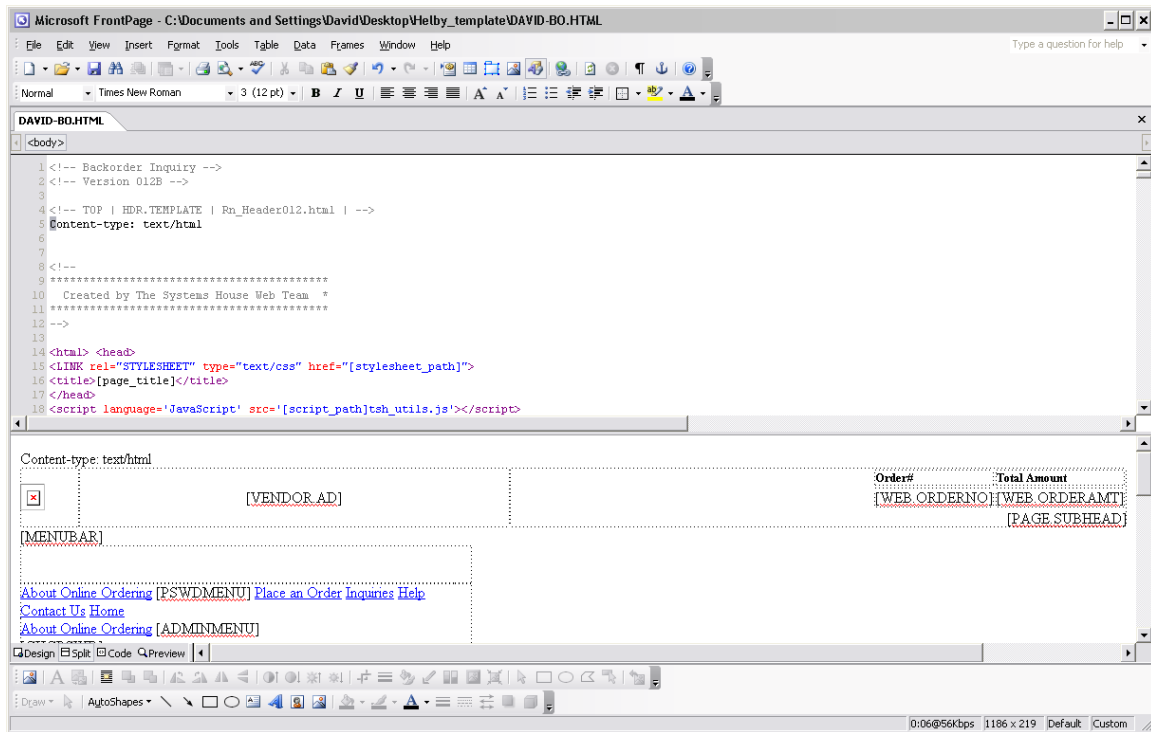
In our example we will use the Code BO for Backorder Inquiry



3. Now that we have chosen our page we will need to export the current template to change the look and feel we called the file I exported DAVID_BO.html – however the name is not important. We would recommend you keep the loginpath in the name so you can remember it when uploading.

4. To edit your template browse to the network share that the file is saved on. – in our example it's put on /tmp/ on our MDS server

I then opened it using MS frontpage – which is a web page editor



5. The Structure of the template is denoted by comments in the HTML code
 The characters `<!--` and `-->` are the indicators for comments. Each page is made up of many templates that are split into the database so you can use a standard header for all pages but would have a different main section for others.

To identify the different sections that make up a page the special tags `<!--TOP` and `<!--ENDTOP` are used – anything between those two tags is put into a template called “*Template name*” where `<!-- TOP – |TEMPLATE TYPE | Template name -->` is in the document –

Our example below shows the “Rn_Header012.html” template name. and the “Rn_Default_page012.html” With a type of HDR.TEMPLATE – when combined with other sections these will make up our complete page.

This is the name the database will use to reference the portion of the overall page you created. – in this way you can create a single header and share it over all the pages. Or you can change the heading on any page you want.

Example:

```
<!-- Backorder Inquiry --> This is the Name of the page for reference purposes
<!-- Version 012B -->
```

This is the Version 012B indicates the Base 12 version the B is for testing and normally this relates to the version of remote net you are running. Customer are all given 3 digit codes to indicate their special versions –as an example 725 = Customer Helby/Beadsmith

```
<!-- TOP | HDR.TEMPLATE | Rn_Header012.html | -->
```

This is the top of the template called Rn_Header012.html – with a type of HDR.TEMPLATE..

Content-type: text/html

```
<html> <head>
<LINK rel="STYLESHEET" type="text/css" href="[stylesheet_path]">
<title>[page_title]</title>
</head>
<script language='JavaScript' src='[script_path]tsh_utils.js'></script>
<!-- ENDTOP -->
<!-- TOP | DEFPG.TEMPLATE | Rn_Default_page012.html | -->
<body>
<div id="tsh"></div>
<div id="superholder">
<div id="RnHeader">
Html codes goes here
<!-- ENDTOP -->
```

6. Making changes and understanding the KeyWords

All special keywords in the Rn Version 6.0 templates use the format [VARIABLE.NAME] – they typically all have a bracket in the beginning and the end. – You can remove them from the template and they simply will not show – however some are special codes are required. – as an example “[stylesheet_path]” is the path to the Global Template for colors and fonts – if this tag is removed that page will not have the normal Style sheet from the database – so you would need to either add your own style sheet or change the page. –

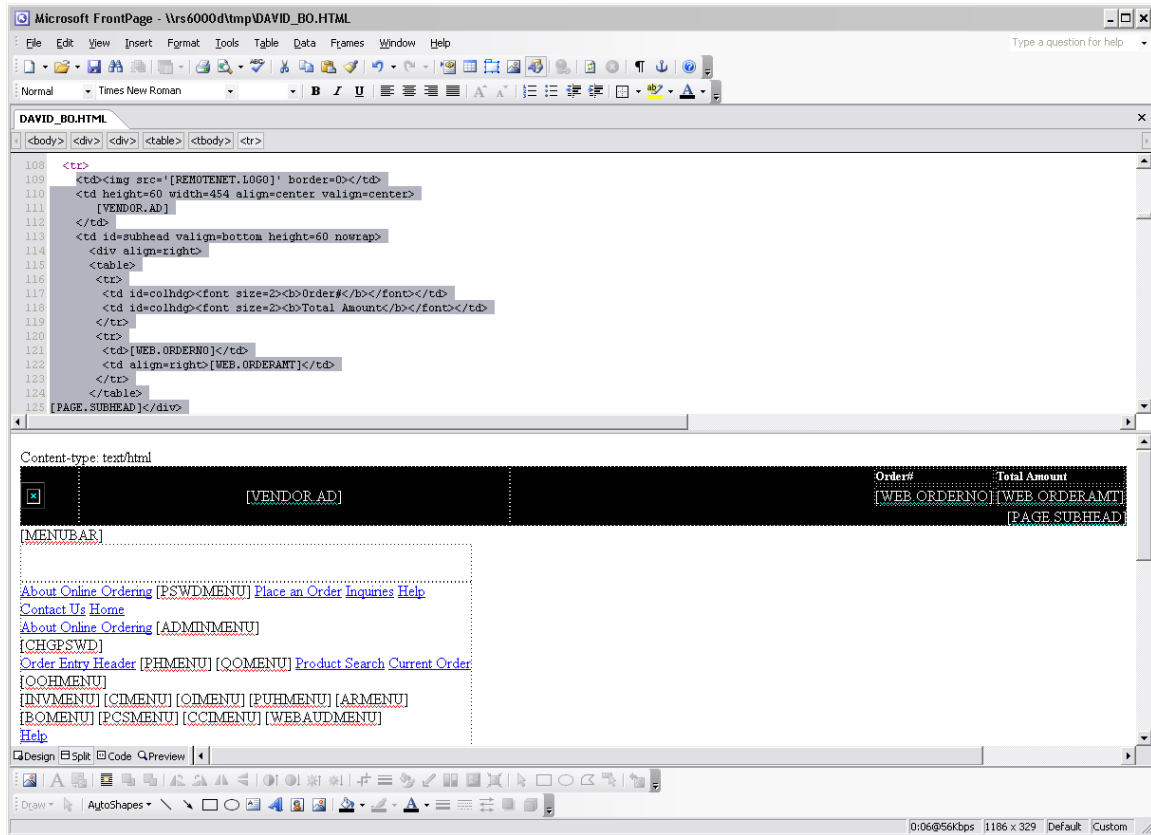
We recommend you create an additional style sheet and leave the default – since they are cascading as long as your style sheet appears after the main one you can override the default styles by using the same names.

Currently Remotnet has the programming logic to retrieve fields from the database in the MDS system – however you can build a hybrid or “mash up” page that incorporates data from many sources by modifying the template – as an example you can embed a graph from google analytics if you wanted using the data available in the screen.

Step 7. Making a change and saving it to the Database

In our example I want to change the default heading to have a different background color of Blue and I want the Total Web Order Amount and Web Order number to be Bright Green. And I am going to change the headings

Step 8. – Changing a table color in html using frontpage



I have highlighted the table I want and right hand click to choose properties then click on colors and blue

Table Properties [?] [X]

Size

Rows: 1 Columns: 3

Layout

Alignment: Default Specify width:

Float: Default 100 In pixels In percent

Cell padding: 0 Specify height:

Cell spacing: 0 In pixels In percent

Borders

Size: 0 Light border: Automatic

Color: Dark border: Automatic

Collapse table border

Background

Color:

Use background picture

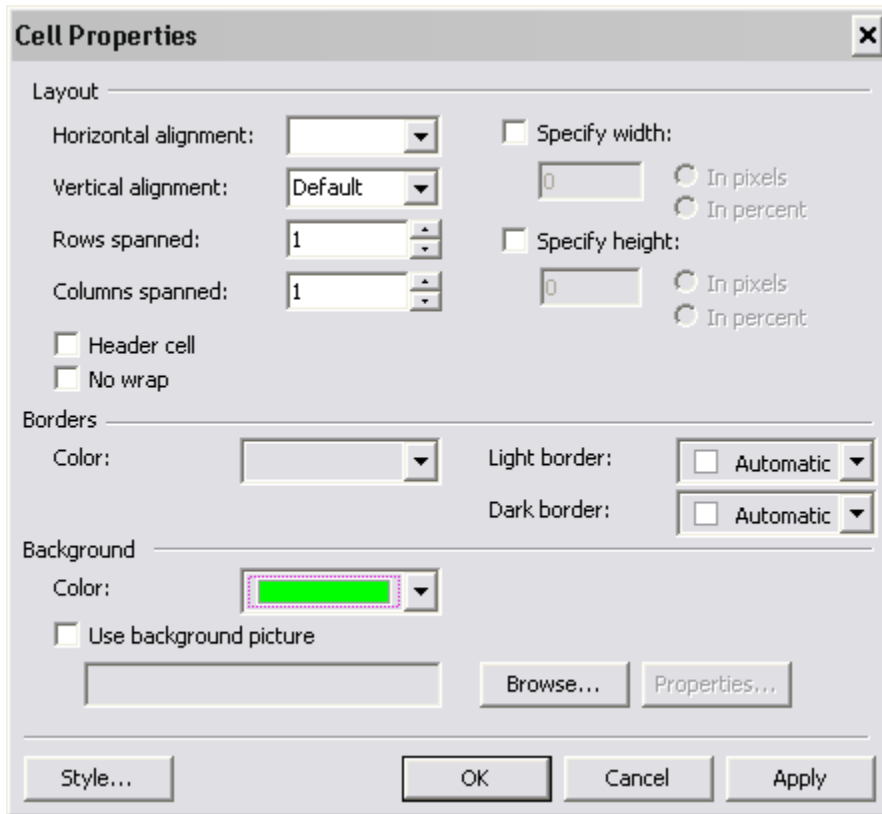
Layout Tools

Enable layout tools Disable layout tools

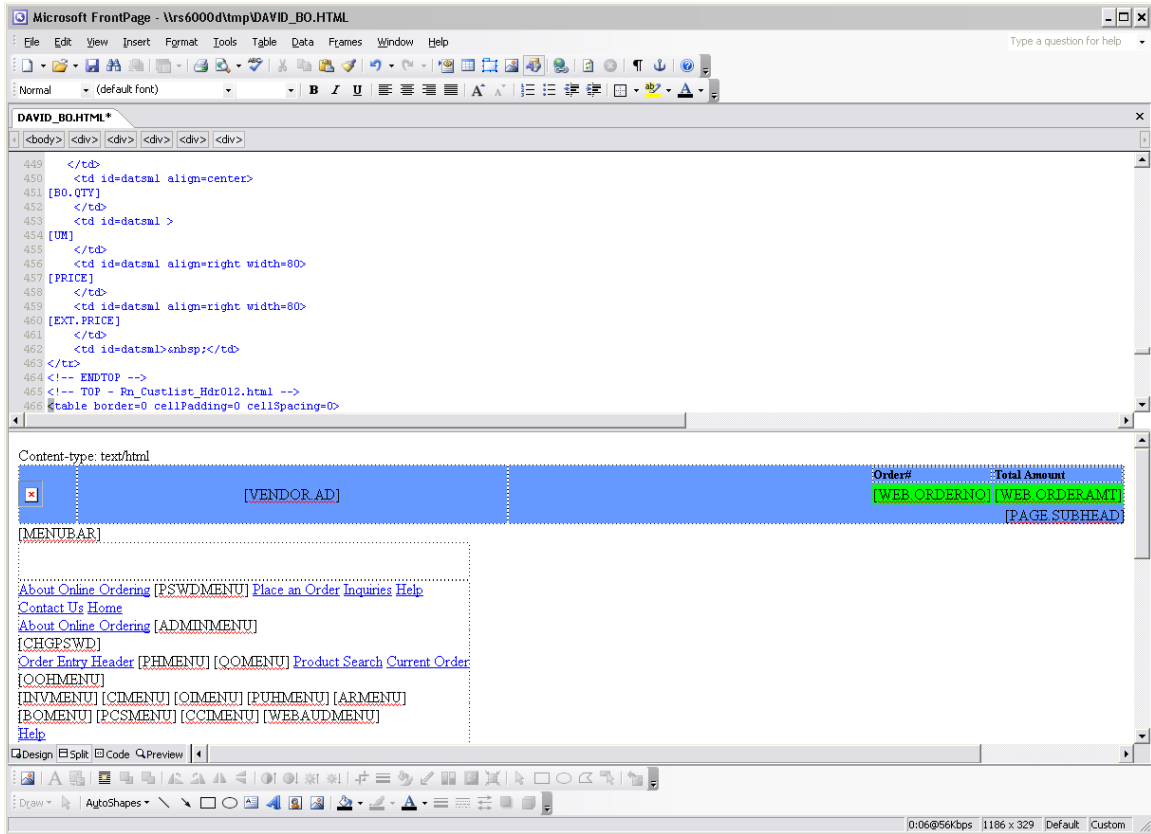
Automatically enable layout tools based on table content

Set as default for new tables

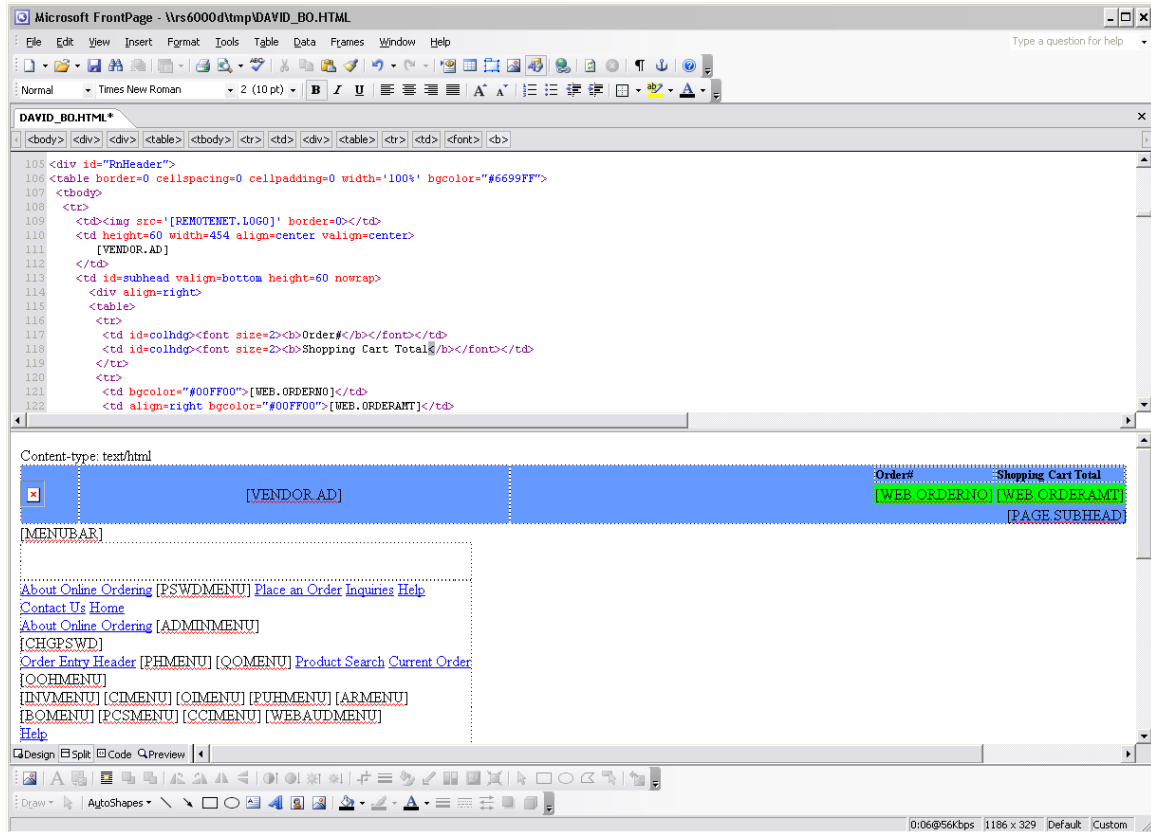
Now I do the same for the fields for [WEB.ORDER.NO] AND [WEB.ORDERAMT]
And change them to green.



In the frontpage viewer I can now see that the colors were updated .



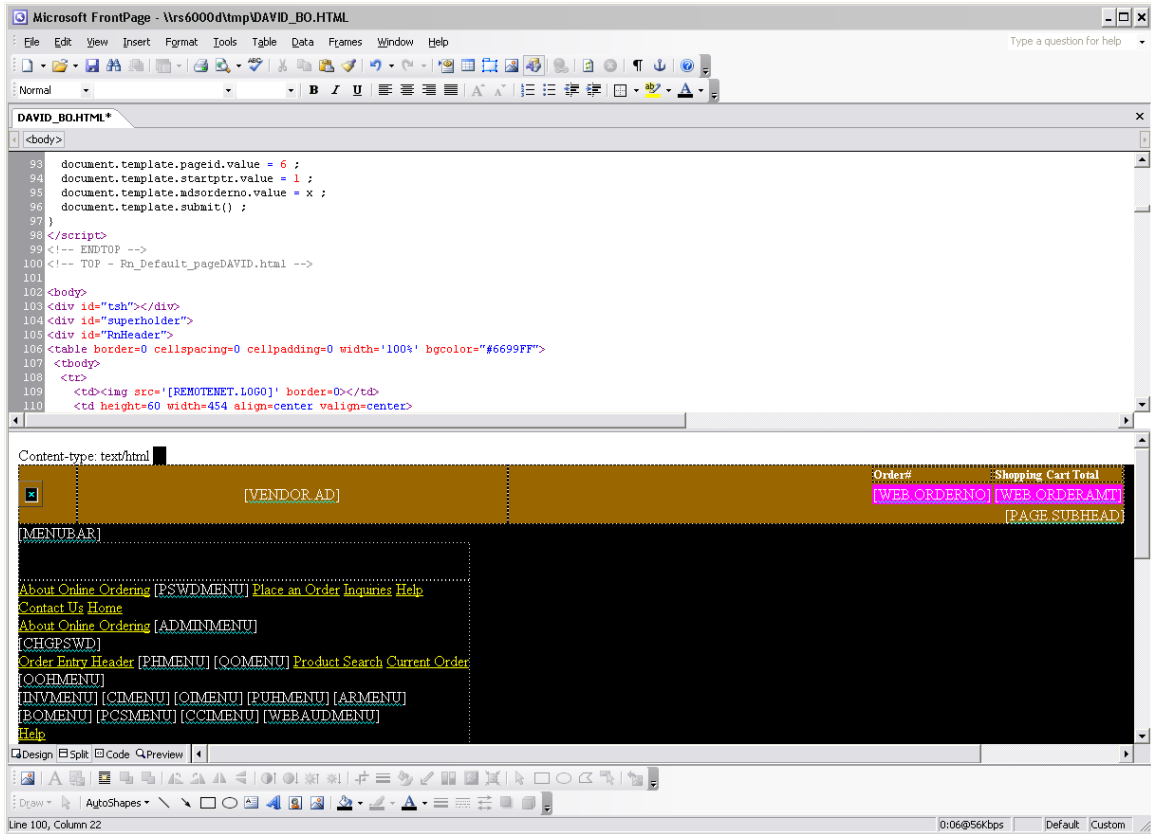
Lastly I change the words “Total Amount” to “Shopping Cart Total”



Step 9 - Now I am ready to save my template back into MDS/Remotenet – to do so – I have to first change the template name with my custom changes b/c in this case I do not want to overlay the default standard template.

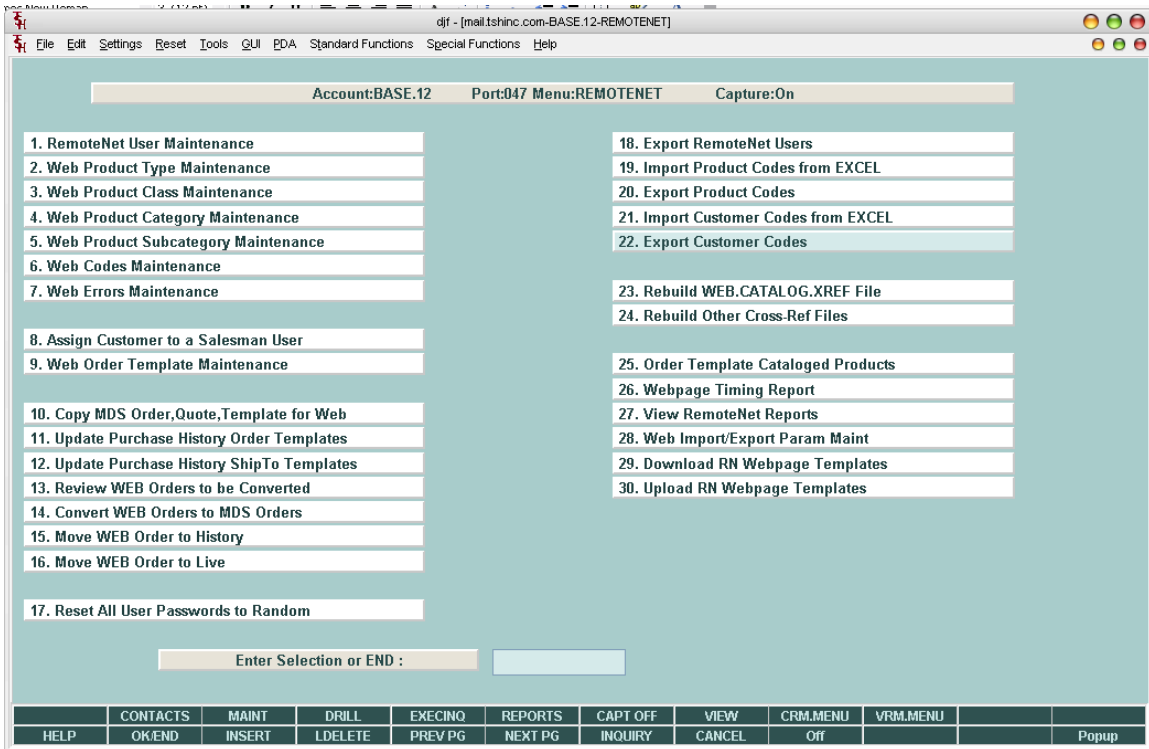
In this case since I only make a change to one portion of the page I am only touching that one name the special tag that said

<!-- TOP | DEFPG.TEMPLATE | Rn_Default_page012.html | --> is changed to
 <!-- TOP | DEFPG.TEMPLATE | Rn_Default_page888.html | -->



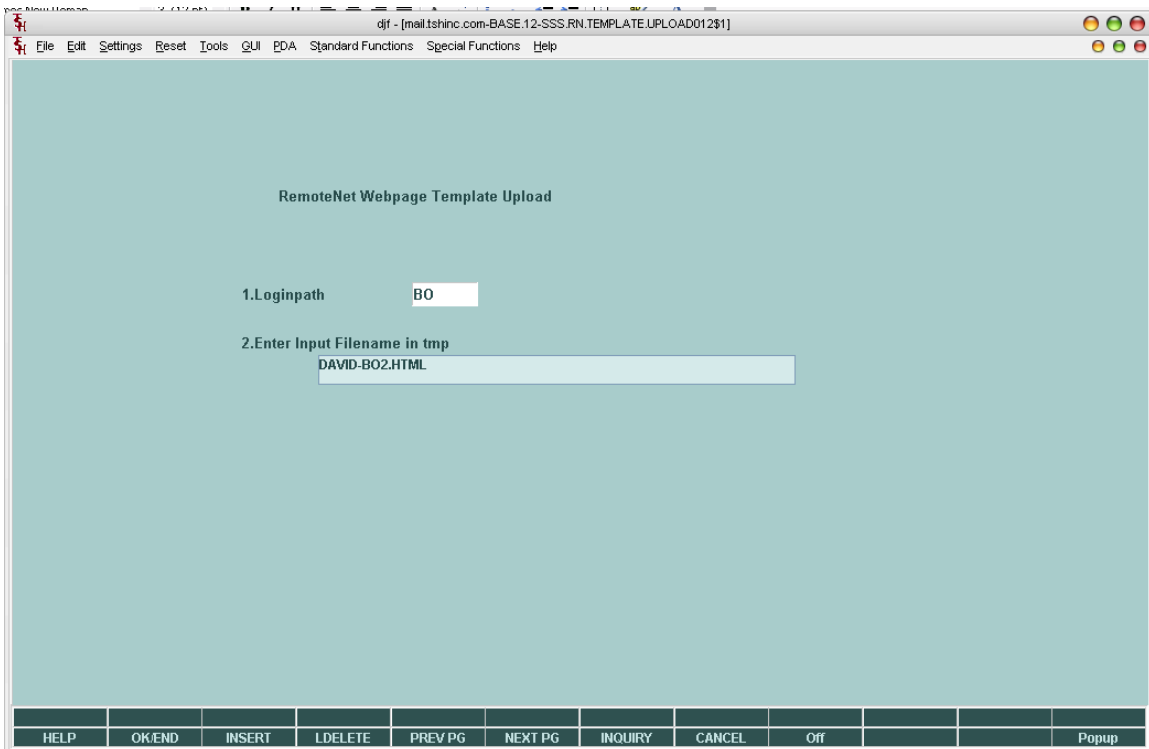
Step 10 uploading into MDS

Return to the MDS Remotnet Menu and choose option 30. Upload RN Webpage Templates – make sure to transfer your file to /tmp on your database server.

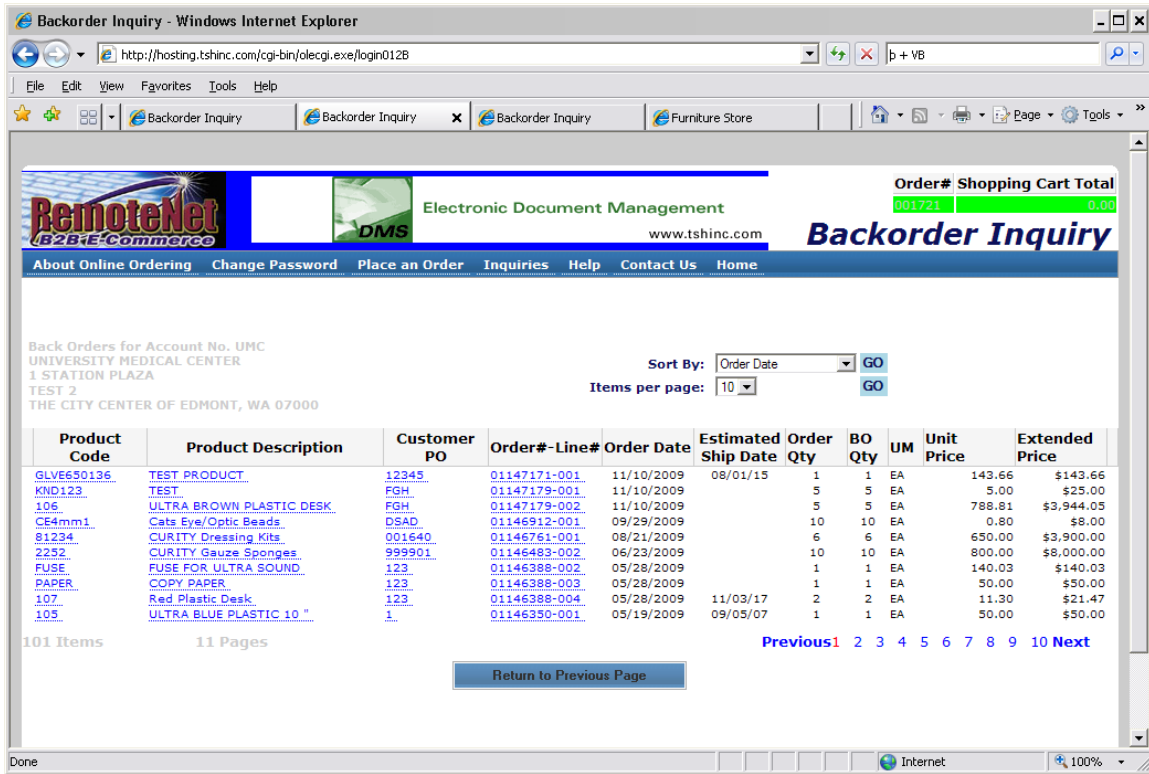


Step 11 – run the upload procedure

Enter your login path and your template name



STEP 12 – login to your website to view and review the changes-
 Please remember to save a copy of your downloaded template so that if you have any issues you can revert to that.



Df

Appendix – Current Layout of Web Codes Table

- 1 PAGE.TITLE WEBPAGE TITLE
- 2 PROD.CLASS PRODUCT CLASS FOR AD IMAGE &
- 3 PAGE.SUBHEAD WEBPAGE SUB HEADING
- 4 PAGE.PGM WEBPAGE PROGRAM NAME #1
- 5 PAGE.PGM2 WEBPAGE PROGRAM NAME #2

6 PAGE.PGM3 WEBPAGE PROGRAM NAME #3
7 HDR.TEMPLATE HEADER TEMPLATE
8 JAVA.TEMPLATE JAVASCRIPT TEMPLATE
9 DEFPG.TEMPLATE DEFAULT PAGE TEMPLATE
10 LOADVAL.TEMPLAT LOADVALUES JAVASCRIPT TEMPLATE
11 FOOT.TEMPLATE FOOTER TEMPLATE
12 PGMV.HDR.TEMPLA PAGE MOVEMENT HEADER TEMPLATE
13 PGMV.CURR.TEMPL PAGE MOVEMENT CURRENT PAGE
14 PGMV.NEXT.TEMPL PAGE MOVEMENT NEXT PAGE
15 PGMV.FOOT.TEMPL PAGE MOVEMENT FOOTER TEMPLATE
16 CUSTLIST.HDR.TM CUSTOM LIST HEADER TEMPLATE
17 CUSTLIST.DTL.TM CUSTOM LIST DETAIL TEMPLATE
18 CUSTLIST.FOOT.T CUSTOM LIST FOOTER TEMPLATE
19 NAVBAR.TEMPLATE NAVBAR MAIN TEMPLATE
20 NAVBAR.QO.TMPL NAVBAR QUICK ORDER TEMPLATE
21 NAVBAR.CREATE.T NAVBAR CREATE LIST TEMPLATE
22 NAVBAR.DELETE.T NAVBAR DELETE LIST TEMPLATE
23 NAVBAR.HO.TMPL NAVBAR HOLD ORDER TEMPLATE
24 NAVBAR.PH.TMPL NAVBAR PROD HIST TEMPLATE
25 MENUBAR.TEMPLAT MENUBAR TEMPLATE
26 PSWD.TEMPLATE MENUBAR TEMPLATE FOR PASSWORD
27 MENUBAR.LOGINPA MENUBAR TEMPLATE FOR LOGINPATH
28 BODY.TEMPLATE MAIN BODY HTML TEMPLATE
29 DTL.TEMPLATE1 DETAIL HTML TEMPLATE NAME 1
30 FOOT.TEMPLATE1 FOOTER HTML TEMPLATE NAME 1
31 BODY.TEMPLATE2 SECOND BODY HTML TEMPLATE NAME
32 DTL.TEMPLATE2 DETAIL HTML TEMPLATE NAME 2
33 FOOT.TEMPLATE2 FOOTER HTML TEMPLATE NAME 2
34 BODY.TEMPLATE3 THIRD BODY HTML TEMPLATE NAME
35 DTL.TEMPLATE3 DETAIL HTML TEMPLATE NAME 3
36 FOOT.TEMPLATE3 FOOTER HTML TEMPLATE NAME 3
37 SORTBY.DTL.TMPL SORT-BY DETAIL TEMPLATE
38 SORTBY.VALUE SORT-BY VALUES FOR WEBPAGE -
39 SORTBY.DESC SORT-BY DESCRIPTIONS -