

ABC's of Inventory Optimization

David Fertig -NCPD

August 12 2008



NCPD

National
Coalition of
Pharmaceutical
Distributors

About Us

- Corporate focus on Medical Supply Chain
- Founded in 1979
- Headquarters in Clifton, NJ
- 25+ years of Distribution Industry Experience
- 15+ years of Medical Supply Chain Experience
- Experienced Management and Support Staff
- Our Software - Developed, Supported, and Maintained by TSH
- Software Customization Services with complete warranty protection
- Full Implementation Lifecycle
- Single Source of Support 7 X 24





TSH – Supply Chain Management for the Real World

■ Modules Available

- Purchasing
- Sales force automation (CRM)
- E-Commerce Remote Net
- Financial Management AR/AP/GL
- WMS – Wireless or Paper based
- Delivery Master/Package Tracking
- Records Retention



The Inventory Management Conflict

*Minimize Inventory Carrying Costs
While
Maximizing Service Levels*



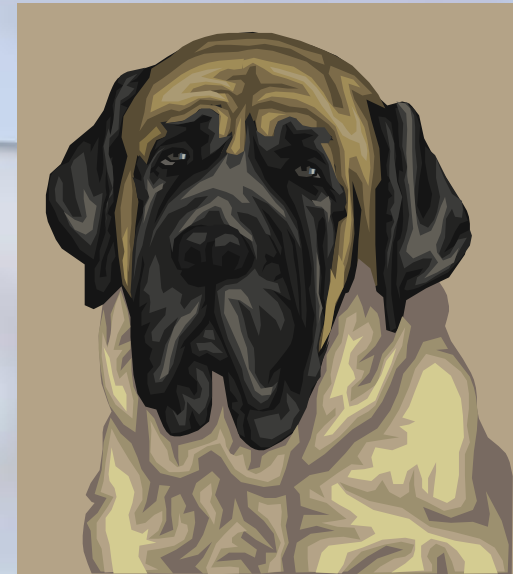
“Nothing is more frustrating then seeing a dust covered pallet in a prime picking zone while customers complain about backorders and stockouts”

– Unnamed business owner



Teaching an old dog new tricks

MCIC



- M – Multi
 - C – Criteria
 - I – Inventory
 - C – Classification
-
- The well-known ABC classification is simple-to-understand and easy-to-use. However, ABC analysis is based on only single measurement such as annual dollar usage. It has been recognized that other criteria are also important.
 - Convert all criteria measures of an inventory item into a scalar score (1,2,3). The classification based on the calculated scores using ABC principle is then applied.

Classical ABC Criteria



- Unit volume
- Sales volume
- Gross profit
- Cost volume
- #of hits
 - orders
 - replenishment
 - transfers



Alternate Ranking Criteria

- Part criticality
- Lead time
- Commonality
- Obsolescence
- Substitutionality
- Order size requirements
- Carrying cost
- Pick Velocity



Part Criticality

- Criticality is used to determine the importance of each end-item in order to accurately derive the impact on Stock outs





Lead Time



- What is your definition of the term "Lead Time"?
- Lead time begins with the first receipt of a customer order and ends with receipt of the product or service. Everything in between is the lead time.
- The scope of the lead time can vary for the purposes of analysis.

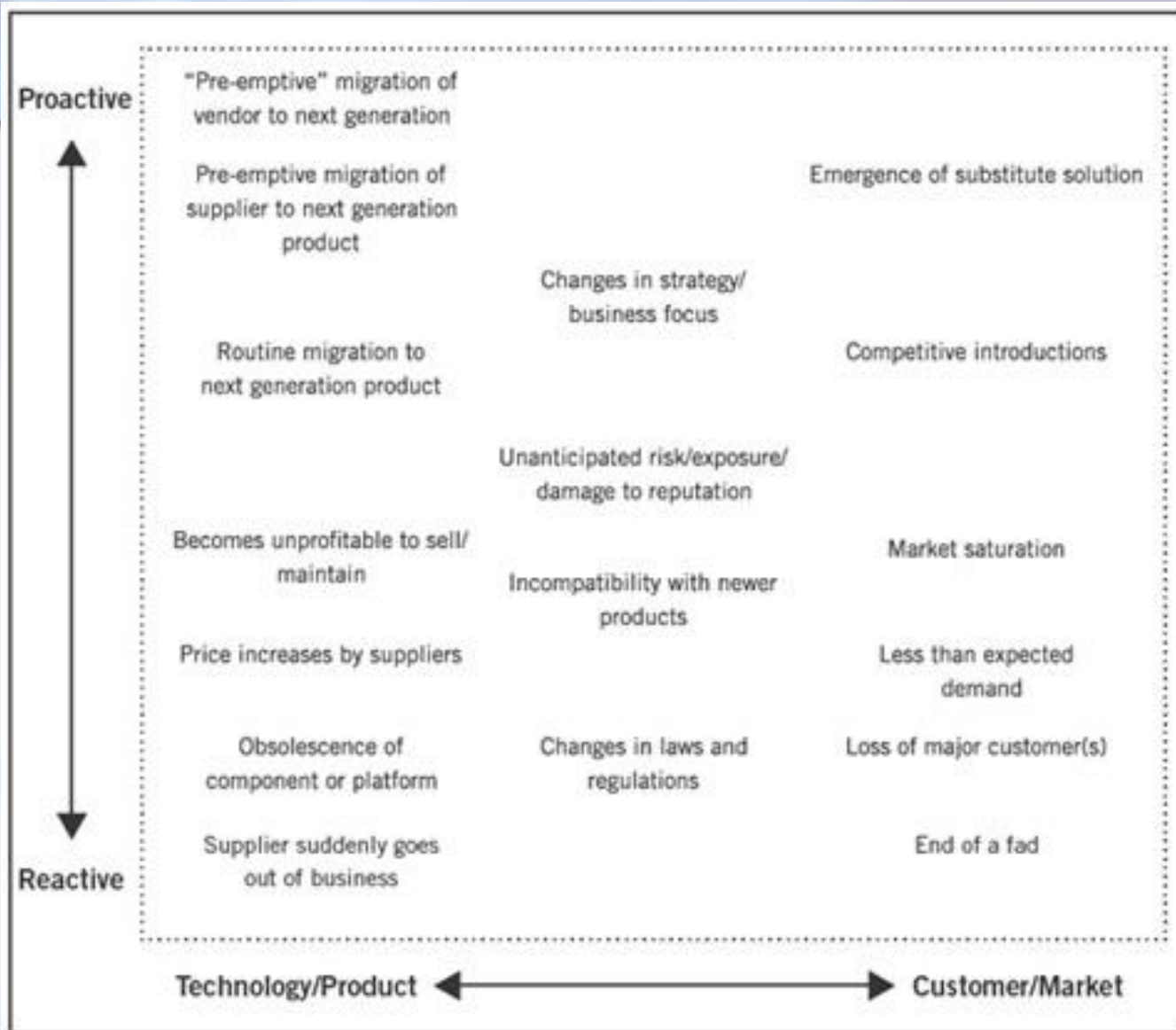


Commonality

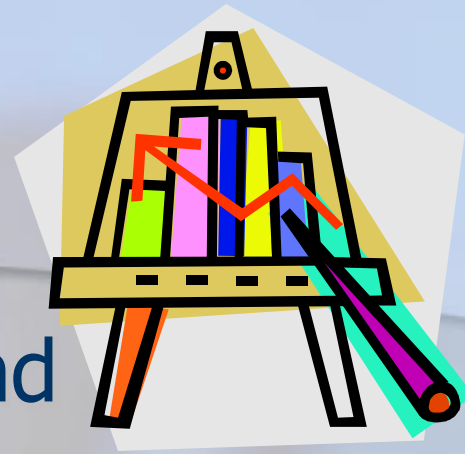
- Replacing several products by a single common product can reduce required safety stock levels due to the benefits of risk pooling.



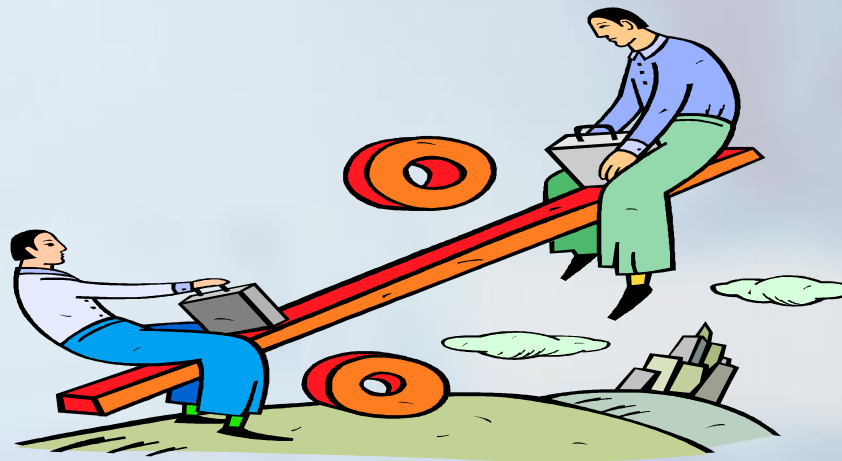
Product obsolescence



Substitutionality

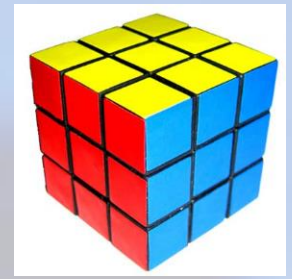


- Microeconomic Preference and Indifference Curves
- Marginal Rate of Substitution
- Degree of Substitutionality





Order size Requirements



- Minimum purchase orders
- Dollars/Quantity
- Cubes/ Trailer Loads
- Overseas – Container Loads





Carrying Costs (K)

<i>Warehouse Space</i>	\$130,000
<i>Taxes</i>	\$65,000
<i>Insurance</i>	\$40,000
<i>Obsolesce and Shrinkage</i>	\$60,000
<i>Material Handling</i>	\$64,800
<i>Cost of Money</i>	\$200,000
Total Annual Costs	\$559,800

<u>Total Annual Costs</u>	<u>\$559,800</u>	Percentage Carrying Cost
Avg Inventory Value	\$2,000,000	= 28% (K)



Warehouse Operations Criteria



- **Pick Velocity**
- Assign zones within areas that categorize prime picking.
 - Prime zones are typically the first rack in the shipping zone, away from dead storage areas such as a mezzanine location
 - Few companies have formal location velocity codes, or velocity-ranked zones and areas. A location velocity code prioritizes the accessibility and travel time to a pick location in your distribution center.
- The pick velocity is the number of visits or trips a picker makes to a product's location within a given period of time.

What's in storage
Feb 1, 2006
Stephen G. Martin



Create Ranking Codes

- Create Criteria Columns
- Assign a value per Criterion Code (A=4,B=3...)
- Update in database or update sheet
- Total values and create MCIC Velocity



Determine ABC Levels



ABC Product Ranking Update

1. Warehouse

2. Enter Ranking Criteria

3. A Item Cutoff

4. B Item Cutoff

5. C Item Cutoff

Inquiry List x

Settings Help

ACCEPTABLE VALUES :

U Unit Volume	<input type="text" value=""/>
S Sales Volume	<input type="text" value=""/>
G Gross Profit	<input type="text" value=""/>
C Cost Volume	<input type="text" value=""/>
N # of Orders	<input type="text" value=""/>

HELP	OK/END	INSERT	LDELETE	PREV PG	NEXT PG	INQUIRY	CANCEL	Off			Popup
------	--------	--------	---------	---------	---------	---------	--------	-----	--	--	-------

Microsoft Excel - MCIC-Inventory.xls

File Edit View Insert Format Tools Data Window Help

Type a question for help

Arial 10 B I U

Security...

G7 10

	A	B	C	D	E	F	G
1	A_PROD_NO PROD_DESC		VELOCITY- Sales Dollars	VELOCITY- Criticality	WLOC1	VELOCITY - Pick	Total Velocity
2	GLVE650130	GLOVE NS LTX SM PWDRFREE	A	A	002110956	A	12
3	GLVE650132	GLOVE NS LTX MD PWDRFREE	A	A	002110957	A	12
4	GLVE650134	GLOVE NS LTX LG PWDRFREE	A	D	002110958	A	9
5	02-5300	GLOVE NS ULTRACARE SM 100	A	A	002110994	A	12
6	513029-42	OLYMPIC UNISEX SWEATER	A	A	003104330	B	10
7	513029-44	OLYMPIC UNISEX SWEATER	A	A	003104338	B	10
8	513029-46	OLYMPIC UNISEX SWEATER	A	D	003104344	B	12
9	513029-48	OLYMPIC UNISEX SWEATER	A	A	003104351	B	12
10	513029-50	OLYMPIC UNISEX SWEATER	A	A	003104361	B	9
11	513029-52	OLYMPIC UNISEX SWEATER	A	A	003104370	B	12
12	513029-54	OLYMPIC UNISEX SWEATER	A	D	003104377	B	10
13	513029-56	OLYMPIC UNISEX SWEATER	A	A	003104386	B	10
14	MMD3	SYRINGES 30CC PLASTIC	A	A	SRC115483	A	12
15	TREXWD86	WHEELCHAIR,MIDNIGHT BLUE	A	A	002111169	A	12
16	33239	OXYGEN CANNULA ADULT 7'	A	A	003110504	A	9
17	117155-065	ADVANTAGE MENS BOOT	A	A	002102195	C	12
18	117155-070	ADVANTAGE MENS BOOT	A	A	002102200	C	10
19	117155-075	ADVANTAGE MENS BOOT	A	D	002102206	C	10
20	117155-100	ADVANTAGE MENS BOOT	A	A	002102262	C	12
21	117155-105	ADVANTAGE MENS BOOT	A	A	002102270	C	12
22	T3	3" STEEL TUBING	A	A	002126281	C	9
23	T12	12" STEEL TUBING	A	A	002126282	C	12
24	T6	6" STEEL TUBING	A	A	002126283	C	10
25	BW-601	TYPE RHL SINGLE CONDUCTOR	A	A	002126292	A	10
26	117155-120	ADVANTAGE MENS BOOT	A	A	002102285	C	12
27	BW-603	TYPE RHL DOUBLE CONDUCTOR	A	A	002126293	A	12
28	117155-125	ADVANTAGE MENS BOOT	A	A	002102287	C	9
29	101	RED PLASTIC DESK	A	A	001100000	A	12
30	102	BLUE PLASTIC DESK	A	B	001100001	D	10
31	103	BROWN PLASTIC DESK	A	D	001100002	D	10
32	104	ULTRA RED PLASTIC DESK	A	A	001100003	D	10

Sheet1 / Sheet2 / Sheet3

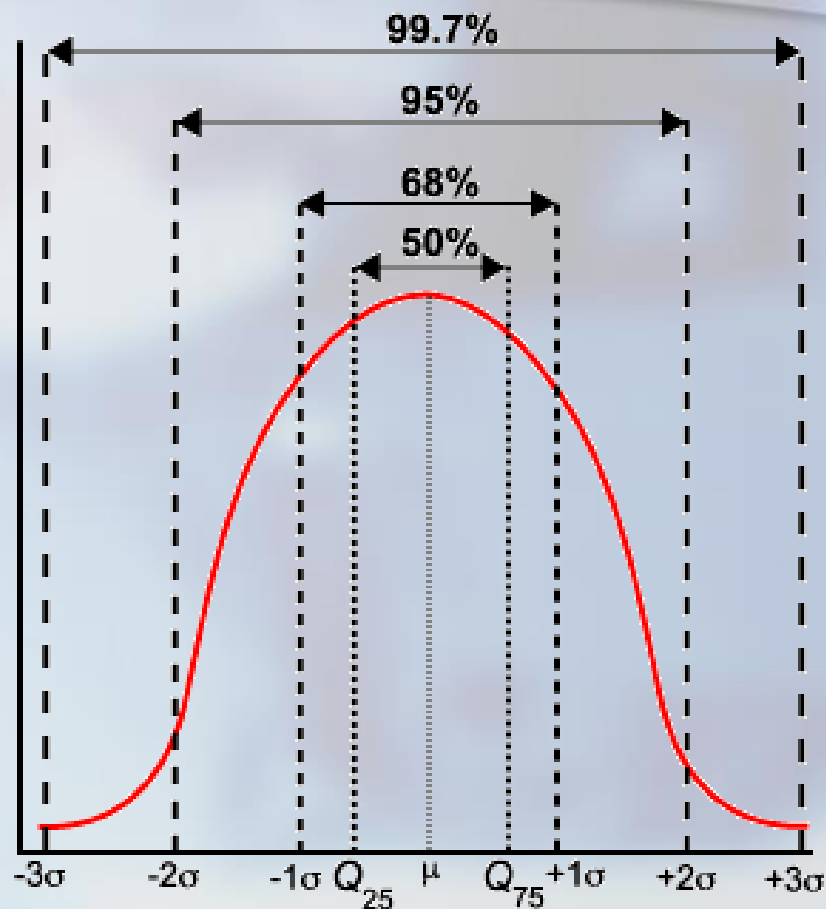


Service Levels/Safety Stock

The Poisson Distribution



Velocity Code	Service Level Objective	Safety Stock Required
A	93%	148%
B	85%	104%
C	75%	68%
D	50%	0%



Service Level Goals

Standard Deviations

50	60	70	75	80	85	90	91	92	93	94	95	96	97	98	99
0	0.25	0.52	0.68	0.84	1.04	1.28	1.34	1.41	1.48	1.56	1.65	1.76	1.88	2.06	2.33

Setup Your Service Levels



WinMDS_RS6000 - [rs6000d.tshinc.com-3556 demo.12-IM.PARAMS1]

File Edit Settings View Reset Tools GUI PDA Standard Functions Special Functions Help

Inventory Management Parameters - Basic Settings

PARAMETER IM.PARAM

1.ROP Months Non Seasonal	5	Demand Scaling Factor - Non Seasonal	
2.ROP Months Seasonal	3	16.#	
3.A Item Service Level	148.00	1.	5
4.B Item Service Level	104.00	2.	4
5.C Item Service Level	68.00	3.	3
6.D Item Service Level	0.00	4.	2
7.Single Service Level	0.00	5.	1
8.PO Cost Source	2	6.	1
9.Default Purchasing Lead Time	2.0	7.	1
10.Default Admin Lead Time	0.5	8.	1
11.Alpha Constant for Lead Time	0.3	9.	1
12.Purchasin Lead Time Minimum	25.00	10.	1
13.Purchasing Lead Time Maximum	200.00	11.	1
14.Default ROP/Min Months	0.0	12.	1
15.Default ROQ/Max Months	0.0		

ENTER LINE # TO CHANGE,DELETE TO DELETE,0 TO ACCEPT : xxxxxx

PAGE 1 OF 2

HELP	OK/END	INSERT	LDELETE	PREV PG	NEXT PG	INQUIRY	CANCEL				Popup
------	--------	--------	---------	---------	---------	---------	--------	--	--	--	-------



Sample Reorder Calculation



- Example: Product GLVE650132
- Sales Demand = 20 Units
- Velocity Level = AAA (12) Highest possible
 - Safety factor is 50%
 - Vendor/Item minimum months is 2.0
 - Vendor/Item maximum months is 3.0

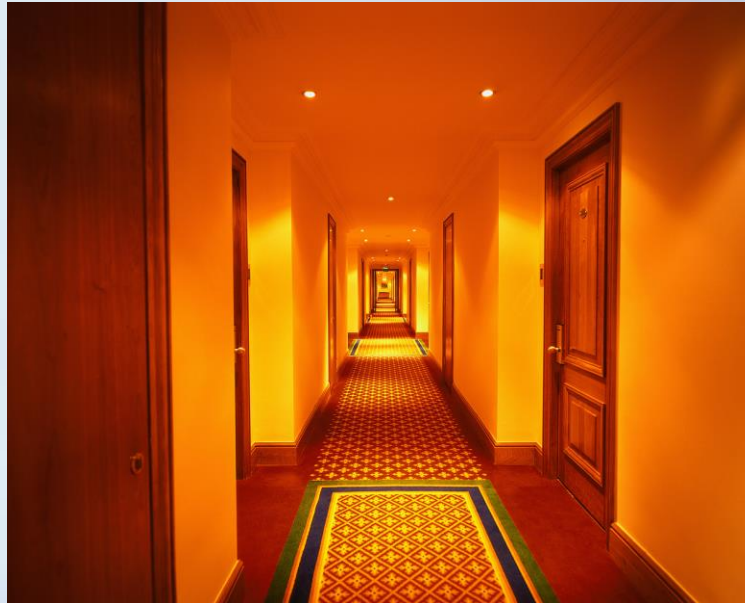
- Minimum = $20 * 2 = 40$
 - Plus service level = $40 * 50\% = 20$
 - **Minimum = $40 + 20 = 60$**
- Maximum = $20 * 3 = 60$
 - Plus service level = $60 * 50\% = 30$
 - **Maximum = $60 + 30 = 90$**



Summary

A simplified approach takes little effort and can yield large returns

- ABC Analysis is simple and easy to use but doesn't solve all issues
- Using MCIC can address many more concerns of the inventory manager





Thank You

THANK
YOU

David Fertig

df@tshinc.com

<http://www.tshinc.com>