



RemoteNet Training Guide



RemoteNet Parameters

- Parameter Files
- WEB.ORDER.NO – contains the next WEB order number to be assigned. This item is the same as the site visitor number, regardless of whether or not an order is actually placed.
- WEB.BROWSE.NO – used for next order number when browsing without logging in
- VENDOR.UPLOAD – contains parameters that control the vendor's upload procedures for online uploads and batch mode uploading.
- VENDOR.DOWNLOAD- contains parameters that control the vendor's download procedures for online downloads
- WEB.REPORTS.LINK – this item contains the link path for reports and spreadsheets that is used by RemoteNet when report and/or spreadsheet output files are generated. For example: purchasing history



RemoteNet Parameters

- Parameter Files
- WEB.OPTIONS - used for various website paths
- WEB.ORDER.INQ.DATE – date used by web inquiries to limit orders and releases ie
- WEB.ORDER.OPTIONS – used to control how orders are converted, order terms for credit cards and various email addresses and options
- WEBSITE.ID – website id for links on site
- WEBSITE.ID.EPROCURE – website id for use with eprocurement
- WEBSITE.IMAGES – path where the standard images such as the logo are stored.
- DEBUG.TIMING.FLAG – this item contains two parameters that tell the RN modules when to output records to the SUBMIT.LOG file. For debugging and timing if this is turned off the timing report will have no data
- TECHSUPPORT.URL – used for email for website support

...GETTING THE STANDARD

MEMBER LOGIN

SHOPPING CART

Member Login

Medical/Surgical Supplies Login

Web Customer

Need A Web Login?

my med source

Browser

Web Order #

000000

Sort By:

Items per page:

Save as Default

Enter Quantities in boxes, and click an UPDATE button below to add quantities to your current order. Click on a Product Picture or Product Number for additional product information.

Product No.	Desc	In Stock	Unit Price	Product	Qty
11111111	11111111				

Update Order

Print Order

Product History

Product Search

Enter information in the boxes below, then click "CREATE USER" at the bottom of this page.

Welcome to RemoteNet - Windows Internet Explorer

http://hosting.tshinc.com/rn/

Welcome to RemoteNet

Welcome to RemoteNet

On-line Customer Information System from The Systems House, Inc.

Welcome to Online Ordering
PLEASE LOG IN:

Please enter your Web Customer ID: DEMO

Please enter your Password:

Login Clear Form

NEW TO WEB ORDERING?

For a Demo Login use the following codes

Please Click here for Interactive DEMO Notes

For Order Entry Demo enter
Web Customer ID: DEMO
Password: DEMO

For Salesman Demo enter
Web Customer ID: SLS
Password: SLS

Not a web customer yet? Email us

FORGOT YOUR WEB CUSTOMER NUMBER?

Enter the account email address* below and we will send it to you

GO

*Please note: To receive web customer login information, the email address entered here MUST match the email address on file for your account.

Login Problems? Email us!
weblogin@shinc.com

NOTE: This system requires Microsoft Internet Explorer 5.0 or greater. To download the latest version of IE5, please go to Microsoft.com

©2000 The Systems House, Inc. www.tshinc.com

RemoteNet

Customer Information System

from The Systems House, Inc.

Welcome to Online Ordering
PLEASE LOG IN:

Please enter your Web Customer ID: DEMO

Please enter your Password:

Login Clear Form

NEW TO WEB ORDERING?

For a Demo Login use the following codes

Please Click here for Interactive DEMO Notes

For Order Entry Demo enter
Web Customer ID: DEMO
Password: DEMO

For Salesman Demo enter
Web Customer ID: SLS
Password: SLS

Not a web customer yet? Email us

FORGOT YOUR WEB CUSTOMER NUMBER?

Enter the account email address* below and we will send it to you

GO

*Please note: To receive web customer login information, the email address entered here MUST match the email address on file for your account.

Login Problems? Email us!
weblogin@shinc.com

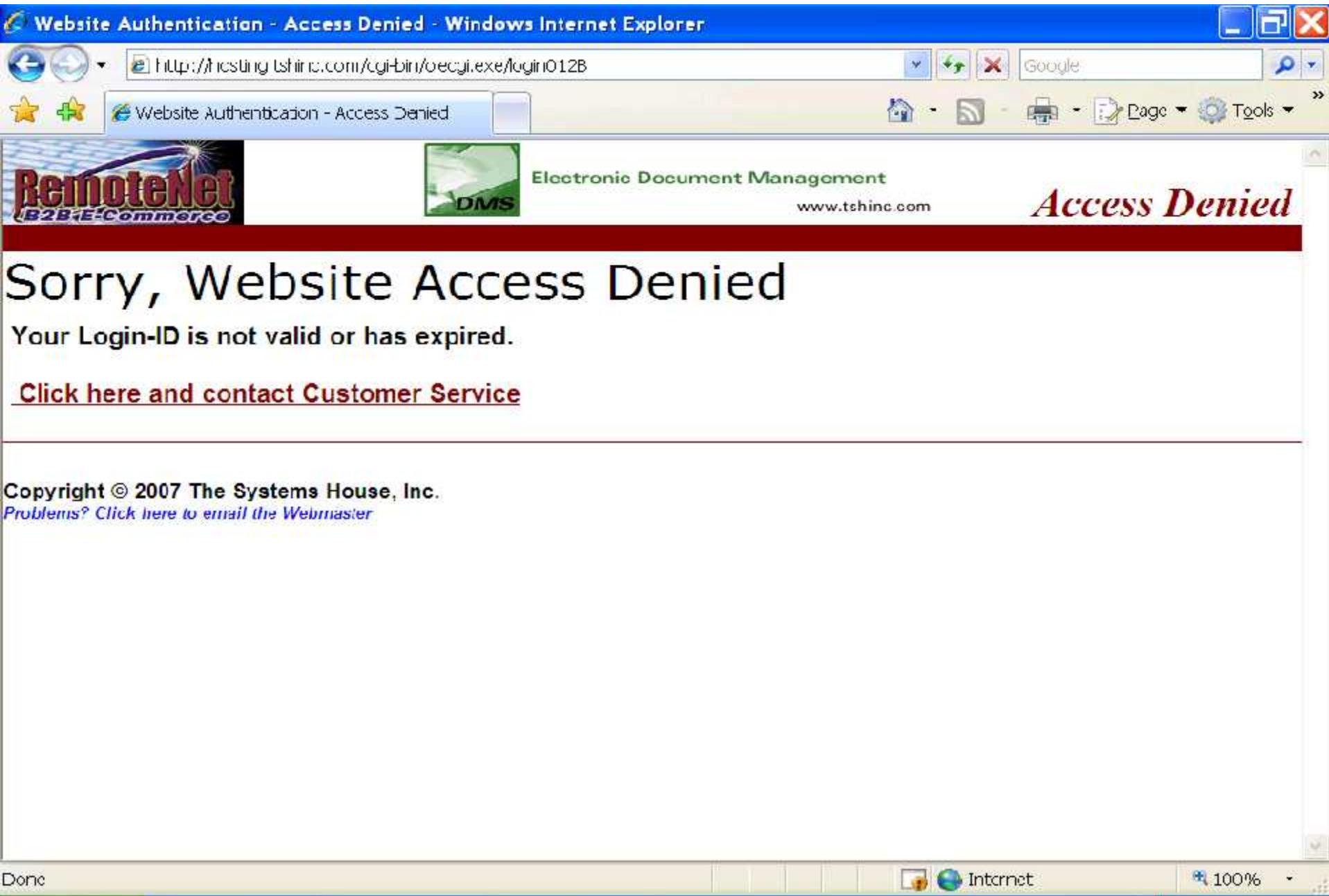
NOTE: This system requires Microsoft Internet Explorer 5.0 or greater. To download the latest version of IE5, please go to Microsoft.com

©2000 The Systems House, Inc. www.tshinc.com



RemoteNet Key Features

- One-way remote access allows for an easy and powerful internet sales tool
- Customers can view product lines and place orders from your Website **at their convenience**.
- Safe, secure access to your database, with password encrypted admittance for customers and **salespeople**.
- Website can be hosted and administered on TSH's remote server.
- Your existing Website can incorporate RemoteNet. A key feature of our Web product is its open design. It does not require the use of our MDS system, and because of its ODBC compliance, it can be interfaced to many environments.



RemoteNet Training

0



Welcome to RemoteNet

On-line Customer Information System from The Systems House, Inc.

Welcome to Online Ordering	
PLEASE LOG IN:	
Please enter your Web Customer ID:	<input type="text" value="DEMO"/>
Please enter your Password:	<input type="password"/>
<input type="button" value="Login"/>	<input type="button" value="Clear Form"/>

FORGOT YOUR WEB CUSTOMER NUMBER?
Enter the account email address* below and we will send it to you.

*Please note: To receive web customer login information, the email address entered here MUST match the email address on file for your account.
Login Problems? Email us!
weblogh@shinc.com

NEW TO WEB ORDERING?

For a Demo Login use the following codes:

Please Click here for Interactive DEMO Notes

For Order Entry Demo enter
Web Customer ID: **DEMO**
Password: **DEMO**

For Salesman Demo enter
Web Customer ID: **SLS**
Password: **SLS**

Not a web customer yet? Email us



NOTE: This system requires Microsoft Internet Explorer 5.0 or greater.
To download the latest version of IE5, please go to Microsoft.com



Notice

Please Click below to accept our Terms and Conditions.



- Order Entry Header
- Product History
- Line Item Entry
- Product Search
- Current Order
- Orders On Hold



- Inventory Inquiry
- Customer Price Inquiry
- Order Inquiry
- Purchasing History
- Accounts Receivable
- Backorders
- Product Contract

Web Order #	Custom	Ship to
000074		UNIVERSITY MEDICAL CENTER NEW YORK CITY NY 10018-1480

406 Items are on this template.

Sort By: Save as Default

Items per page: Save as Default

Manufacturer:

Choose a template:

Enter Quantities in boxes at left, and click an UPDATE button below to add quantities to your current order. Click on any Product Description for additional product information. Click on Purchase History for purchase details.

Product No.	Avg.M.	Product Description	In	Mfr
-------------	--------	---------------------	----	-----

If you wish to use a Custom Template choose one or Please select your preferred order entry method:

Choose a template:

E2C01	CA			
E2C02	BX			
E2C03	BX	1	\$89.40C BX	
E2C04			SCOTCH-CAST 4" WHITE 10/BX	3M COMPANY



- Order Entry Header
- Product History
- Line Item Entry
- Product Search
- Current Order
- Orders On Hold

- Inventory Inquiry
- Customer Price Inquiry
- Order Inquiry
- Purchasing History
- Accounts Receivable
- Backorders
- Product Contract

Web Order #	000074	Custom #	0000	Ship to	UNIVERSITY MEDICAL CENTER NEW YORK CITY NY 10018-1480
-------------	--------	----------	------	---------	--

406 Items are on this template.

Sort By: Save as Default

Items per page: Save as Default

Manufacturer:

Choose a template:

Enter Quantities in boxes at left, and click an UPDATE button below to add quantities to your current order. Click on any Product Description for additional product information. Click on Purchase History for purchase details.

Product No.	Avg.M.	Product Description	In	Mr
-------------	--------	---------------------	----	----

If you wish to use a Custom Template choose one or Please select your preferred order entry method:

Choose a template:

E2C01	CA				
E2C02	BX				
E2C03	BX	1	\$89.40C BX		
E2C04			SCOTCH-CAST 4" WHITE 10/BX		3M COMPANY



About RemoteNet

Welcome to RemoteNet™ Web based Customer Information System
from The Systems House, Inc.

RemoteNet™ from TSH:
your **hassle-free** web based customer service and order entry system.

RemoteNet™ allows consumers to access your database without tying up your system or staff! Customers can [view product lines](#) and [place orders](#) over the Web as well as [check on the status of their order](#) right from their home or office!

TSH will administer your system and can even create and/or host your website.

Each customer gets a [login code](#) to access your database; (guests passes are also available). Customers then have the ability to browse the database, perform [product inquiries](#), [view product information including photos](#) (if provided), check on existing orders, and place new orders. If new orders are placed, TSH will transmit the orders to you via EDI, email, fax, or batch transmission, your choice. Customers can pay via secured credit cards or charge to their accounts.

RemoteNet™ Key Features:

- * One-way remote access allows you to have a powerful sales tool on the Web without the investment in an additional server to host the traffic, or in additional staff for customer support.
- * Customers can view your product line and place orders from your Website [at their convenience](#).
- * Safe access to your database, with password encrypted admittance for customers and [salespeople](#).
- * Website can be hosted and administered on TSH's remote server.
- * The database can be updated as often as you like.
- * [Orders](#) transmitted via EDI, email, fax, or batch transmission.

Your existing Website can incorporate RemoteNet™. A key feature of our Web product is its open design. It does not require the use of our MDS system, and because of its ODBC compliance, it can be interfaced to non-Pick environments. NOTE: Because of the complex and personalized nature of this product, the one-time startup and ongoing license fees must be quoted on an individual basis.

For more information call 1-800-637-5556 or [click here](#).

[Click Here to Proceed to an Order Entry Demo](#)

[Click here to return to your previous page](#)

Welcome Mr. Demo Customer

To place a new order please fill in order information below :

Required information is highlighted

Web Order Number: 003063

Account #	Sold to	Ship to
DEMO	UNIVERSITY MEDICAL CENTER ACCOUNTS PAYABLE/TRAVEL 400 BROADWAY AVE NEW YORK CITY, NY 10016-1460 U.S.A.	UNIVERSITY MEDICAL CENTER ACCOUNTS PAYABLE/TRAVEL 400 BROADWAY AVE NEW YORK CITY, NY 10016-1460 U.S.A.

Click Here to change ship to:

Required Date:
Dept No:
Customer PO:
Req. No:
Ordered By:
Ship Method:
Special Instructions:

If you wish to use a Custom Template choose one or
Please select your preferred order entry method:

Choose a template:

Welcome Mr. Demo Customer

To place a new order please fill in order information below :

Required information is highlighted

Web Order Number: 003063

Account #	Sold to	Ship to
DEMO	UNIVERSITY MEDICAL CENTER ACCOUNTS PAYABLE/TRAVEL 400 BROADWAY AVE NEW YORK CITY, NY 10016-1460 U.S.A.	UNIVERSITY MEDICAL CENTER ACCOUNTS PAYABLE/TRAVEL 400 BROADWAY AVE NEW YORK CITY, NY 10016-1460 U.S.A.

Click Here to change ship to:

Required Date:
Dept No:
Customer PO:
Req. No:
Ordered By:
Ship Method:
Special Instructions:

If you wish to use a Custom Template choose one or
Please select your preferred order entry method:

Choose a template:

Welcome Mr. Demo Customer

To place a new order please fill in order information below :

Required information is highlighted

Web Order Number: 003063

Account #	Sold to	Ship to
DEMO	UNIVERSITY MEDICAL CENTER ACCOUNTS PAYABLE/TRAVEL 400 BROADWAY AVE NEW YORK CITY, NY 10016-1460 U.S.A.	UNIVERSITY MEDICAL CENTER ACCOUNTS PAYABLE/TRAVEL 400 BROADWAY AVE NEW YORK CITY, NY 10016-1460 U.S.A.

Click Here to change ship to:

Required Date:

Dept No:

Customer PO:

Req. No:

Ordered By:

Ship Method:

Special Instructions:

If you wish to use a Custom Template choose one or Please select your preferred order entry method:

Choose a template:



Order#	Total Amount
000063	\$0.0

Template Order

[About Online Ordering](#) [Change Password](#) [Place an Order](#) [Inquiries](#) [Help](#) [Contact Us](#) [Home](#)

Web Order #	Customer PO#	Ship to
000063	1201	UNIVERSITY MEDICAL CENTER NEW YORK CITY, NY 10016-1480

Current Template: 3M Products

[Click here if you wish to print this template or export to Excel.](#)

5 Items are on this template.

Sort By: Save as Default

Items per page: Save as Default

Manufacturer:

Choose a template:

Enter quantities in boxes at left, and click an UPDATE button below to add quantities to your current order.
Click on any Product Description for additional product information. Click on Purchase History for purchase details.

Product No. Ord. Qty/UM	Avg.M. Usage	Product Description Price/UM	In Stock	Mfr Mfr PN#	Purchase History	Delete Item
73512 <input type="text" value="1"/> BX	0	SCOTCHCAST 1-STP 3X12 5/ \$62.650 BX	<input checked="" type="checkbox"/>	3M COMPANY		<input type="button" value="Delete Item"/>
70410 <input type="text" value=""/> BX	0	SCOTCHCAST 1-STP 4X15 5/ \$59.950 BX	<input checked="" type="checkbox"/>	3M COMPANY		<input type="button" value="Delete Item"/>
7360782693 <input type="text" value=""/> EA	0	BINAURAL & TUBING FOR CARD II \$78.950 EA	<input checked="" type="checkbox"/>	3M COMPANY		<input type="button" value="Delete Item"/>
82002 <input type="text" value="2"/> BX	1	SCOTCHCAST 2" WHITE 10/BX \$72.000 BX	<input checked="" type="checkbox"/>	3M COMPANY	6 BX 06/07/03 1 BX 07/24/02	<input type="button" value="Delete Item"/>
82002D <input type="text" value=""/> BX	0	SCOTCHCAST 2"BLUE 10/BX \$72.000 BX	<input checked="" type="checkbox"/>	3M COMPANY		<input type="button" value="Delete Item"/>

5 Items

1 Page

[Previous](#) [Next](#)



Order#	Total Amount
000063	\$0.0

Template Order

[About Online Ordering](#) [Change Password](#) [Place an Order](#) [Inquiries](#) [Help](#) [Contact Us](#) [Home](#)

Web Order #	Customer PO#	Ship to
000063	1201	UNIVERSITY MEDICAL CENTER NEW YORK CITY NY 10016-1480

Current Template: 3M Products

[Click here if you wish to print this template or export to Excel.](#)

5 Items are on this template.

Sort By: Save as Default

Items per page: Save as Default

Manufacturer:

Choose a template:

Enter quantities in boxes at left, and click an UPDATE button below to add quantities to your current order.
Click on any Product Description for additional product information. Click on Purchase History for purchase details.

Product No. Ord. Qty/UM	Avg.M. Usage	Product Description Price/UM	In Stock	Mfr Mfr PN#	Purchase History	Delete Item
73512 <input type="text" value="1"/> BX	0	SCOTCHCAST 1-STP 3X12 5/ \$62.650 BX	<input checked="" type="checkbox"/>	3M COMPANY		<input type="button" value="Delete Item"/>
70410 <input type="text" value=""/> BX	0	SCOTCHCAST 1-STP 4X15 5/ \$59.950 BX	<input checked="" type="checkbox"/>	3M COMPANY		<input type="button" value="Delete Item"/>
7360782693 <input type="text" value=""/> EA	0	B-NALRAL & TUB NG FOR CARD II \$78.950 EA	<input checked="" type="checkbox"/>	3M COMPANY		<input type="button" value="Delete Item"/>
82002 <input type="text" value="2"/> BX	1	SCOTCHCAST 2" WHITE 10/BX \$72.000 BX	<input checked="" type="checkbox"/>	3M COMPANY	6 BX 06/07/03 1 BX 07/24/02	<input type="button" value="Delete Item"/>
82002D <input type="text" value=""/> BX	0	SCOTCHCAST 2"BLUE 10/BX \$72.000 BX	<input checked="" type="checkbox"/>	3M COMPANY		<input type="button" value="Delete Item"/>

5 Items

1 Page

[Previous](#) [Next](#)



Order#	Total Amount
000063	\$0.0

Template Order

[About Online Ordering](#) [Change Password](#) [Place an Order](#) [Inquiries](#) [Help](#) [Contact Us](#) [Home](#)

Web Order #	Customer PO#	Ship to
000063	1201	UNIVERSITY MEDICAL CENTER NEW YORK CITY NY 10016-1480

Current Template: 3M Products

[Click here if you wish to print this template or export to Excel.](#)

5 Items are on this template.

Sort By: Save as Default

Items per page: Save as Default

Manufacturer:

Choose a template:

Enter quantities in boxes at left, and click an UPDATE button below to add quantities to your current order.
Click on any Product Description for additional product information. Click on Purchase History for purchase details.

Product No. Ord. Qty/UM	Avg.M. Usage	Product Description Price/UM	In Stock	Mfr Mfr PN#	Purchase History	Delete Item
73512 <input type="text" value="1"/> BX	0	SCOTCHCAST 1-STP 3X12 5/ \$62.650 BX	<input checked="" type="checkbox"/>	3M COMPANY		<input type="button" value="Delete Item"/>
70410 <input type="text" value=""/> BX	0	SCOTCHCAST 1-STP 4X15 5/ \$59.950 BX	<input checked="" type="checkbox"/>	3M COMPANY		<input type="button" value="Delete Item"/>
7360782693 <input type="text" value=""/> EA	0	BINAURAL & TUBING FOR CARD II \$78.950 EA	<input checked="" type="checkbox"/>	3M COMPANY		<input type="button" value="Delete Item"/>
82002 <input type="text" value="2"/> BX	1	SCOTCHCAST 2" WHITE 10/BX \$72.000 BX	<input checked="" type="checkbox"/>	3M COMPANY	6 BX 06/07/03 1 BX 07/24/02	<input type="button" value="Delete Item"/>
82002D <input type="text" value=""/> BX	0	SCOTCHCAST 2"BLUE 10/BX \$72.000 BX	<input checked="" type="checkbox"/>	3M COMPANY		<input type="button" value="Delete Item"/>

5 Items

1 Page

[Previous](#) [Next](#)



About Online Ordering Change Password Place an Order

Web Order #

C00063

Current Template: 3M Products

5 Items are on this template.

Sort By: Manufacturer Name

Items per page: 10

Manufacturer: All Manufacturers

Choose a template: 3M Products

Enter quantities in boxes at left and click an UPDATE button below. Click on any Product Description for additional product information.

Product No.	Ord. Qty/UM	Avg.M. Usage	Product Price/UM
78312	<input type="text"/> BX	0	\$62.650
70410	<input type="text"/> BX	0	\$59.950
7380788693	<input type="text"/> EA	0	\$78.950
82002	<input type="text"/> BX	1	\$72.000
020020	<input type="text"/> BX	0	\$72.000

5 Items

1 Page

Template Print & Export to Excel - Windows Internet Explorer

http://hosting.tsh.nc.com/cgi-bin/blecgi.exe/custlist_print012?ordemc=300063&submitvar=43.CustomerId=DEMO&Changesort=2

File Edit View Favorites Tools Help

★ + 🏠 - 🖨️ - 📄 Page - 🛠️ Tools - 🔍

RemoteNet B2B e-Commerce

Template Print & Export

Current Template: PO# E331054

A Print file is available at: http://rmdemo.tshinc.com/rnreports/DEMO_T000063.htm

To print: Click on this link to view the template, then Select FILE and PRINT from the browser Menu, OR click the printer icon on the Toolbar, OR press the CTRL and P keys at the same time.

An Excel spreadsheet is available at: http://rmdemo.tshinc.com/rnreports/DEMO_X000063.xls

To save this file: Click on this link to view the spreadsheet, then Select FILE and SAVE AS from the browser Menu.

Copyright © 2008 The Systems House, Inc.
Problems? Click here to email the Webmaster.

Internet 100%

Previous 1 Next

-
-
-
-
-
-

Current Template Print

406 Items are on this ten OR press the CTRL and

Product No.	Avg.M. Product Usage	Price/UM
1G	EA	\$4.250
82002	LX	\$72.000
82003	LX	\$89.400
82004	LX	\$116.900
M901	EA	\$14.950
EO2	EA	\$35.000
001205	EA	\$3.150



Template Print

Current Template: Purchasing history

406 Items are on this template. To print: Select **FILE** and **PRINT** from the browser Menu, OR click the printer icon on the Toolbar, OR press the **CTRL** and **P** keys at the same time.

Product No.	Ord. Qty/UM	Avg.M. Product Usage	Product Description	Mfg Mfg PN#	Purchase History
1G			SHARPS CONTAINER 1 GALLON		1 EA 04/01/03
<input type="checkbox"/> EA	0	\$4.250	EA		
82002			SCOTCHCAST 2" WHITE 10/BX	3M COMPANY	6 BX 05/07/03
<input type="checkbox"/> EX	1	\$72.000	BX		1 BX 07/24/02
82003			SCOTCHCAST 3" WHITE 10/BX	3M COMPANY	6 BX 05/07/03
<input type="checkbox"/> EX	1	\$89.400	BX		1 BX 04/15/03
82004			SCOTCHCAST 4" WHITE 10/BX	3M COMPANY	5 BX 05/12/03
<input type="checkbox"/> EX	1	\$116.900	BX		5 BX 05/07/03
M901			STOCKINETTE 1" SYNTHETIC	3M COMPANY	2 EA 03/13/03
<input type="checkbox"/> EA	0	\$14.950	EA		4 EA 08/22/02
EO2			OXYGEN E SIZE CONTENTS INC HAZ, DELIVERY, ETC	705 PRAXAIR DIST INC	1 CA 01/19/03
<input type="checkbox"/> EA	0	\$35.000	EA		1 EA 08/27/02
001205			EKG ULTRASOUND GEL 3 OZ	ABCC DEALERS INC	1 EA 07/31/02
<input type="checkbox"/> EA	0	\$3.150	EA		

Web Order #
000065

Current Template: 3M Products

5 Items are on this template.

Sort By: Manufacturer Name

Items per page: 10

Manufacturer: All Manufacturers

Choose a template: 3M Products

Enter quantities in boxes at left and click an UPDATE button.
Click on any Product Description for additional product information.

Product No. Ord. Qty/UM	Avg.M. Usage	P P
78512 1 BX	0	S
70410 BX	0	S
7360788693 EA	0	S
82002 2 BX	1	S
020020 BX	0	S

5 Items 1 Page

Template Print & Export - Windows Internet Explorer

http://hosting.tsh.nc.com/cgi-bin/olecgi.exe/dustlist_printJ12:orderno=000074&submitvar=1&Customerid=01N0&changesort=2

Google Go

Template Print & Export

Current Template: Purchasing history

A **Print file** is available at: https://mdemo.tsh.nc.com/mreports/DEMO_T000074.htm

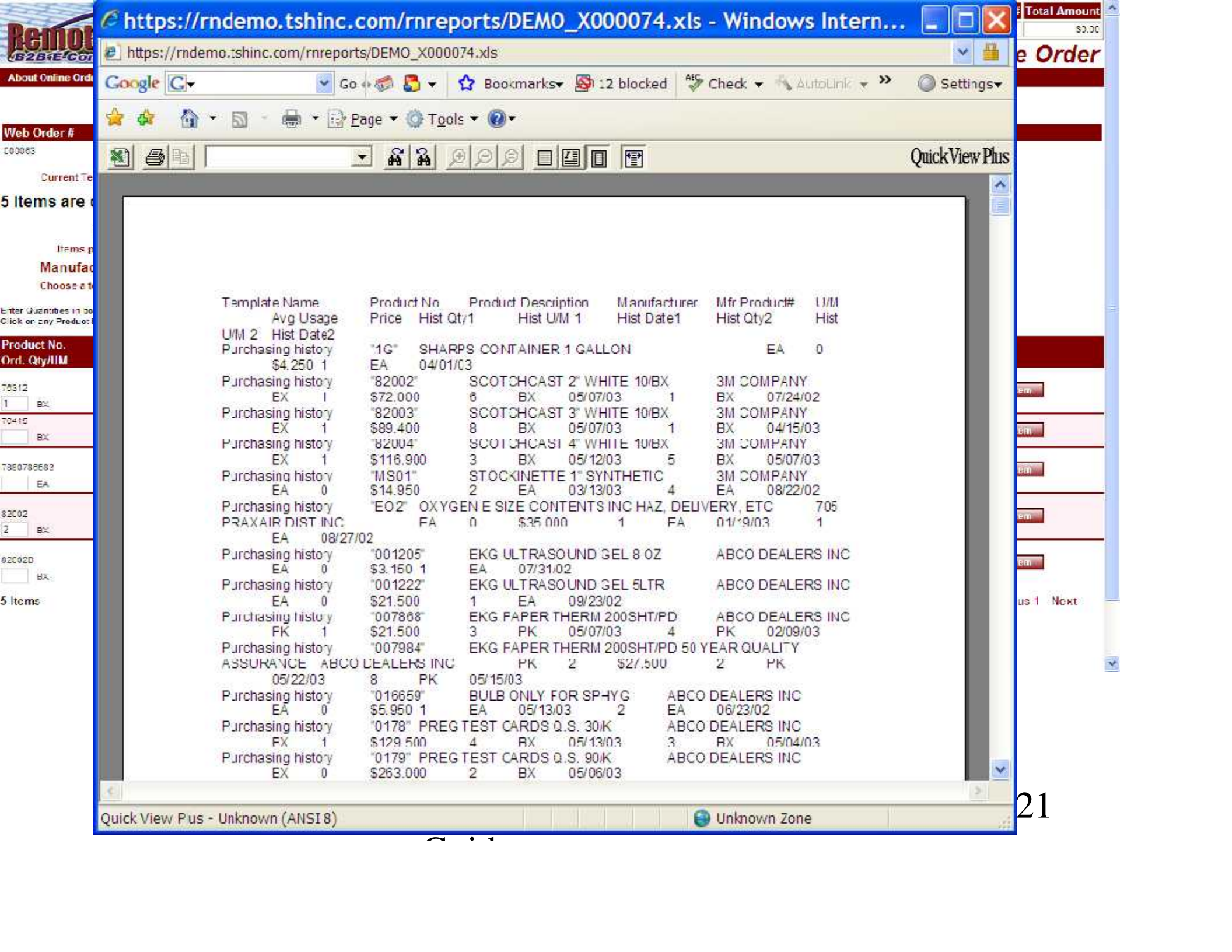
To print: Click on this link to view the template, then Select **FILE** and **PRINT** from the browser Menu, OR click the printer icon on the Toolbar, OR press the CTRL and P keys at the same time.

An **Excel spreadsheet** is available at: https://mdemo.tshinc.com/mreports/DEMO_X000074.xls

To save this file: Click on this link to view the spreadsheet, then Select **FILE** and **SAVE AS** from the browser Menu.

Copyright © 2008 The Systems House, Inc.
Problems? Click here to email the Webmaster

https://mdemo.tsh.nc.com/mreports/DEMO_X000074.xls Internet 100%



Template Name	Product No	Product Description	Manufacturer	Mfr Product#	U/M
Avg Usage	Price	Hist Qty1	Hist U/M 1	Hist Date1	Hist Qty2
U/M 2	Hist Date2				Hist
Purchasing history	"1G"	SHARPS CONTAINER 1 GALLON		EA	0
	\$4,250	EA	04/01/03		
Purchasing history	"82002"	SCOTCHCAST 2" WHITE 10/BX	3M COMPANY		
EX	1	\$72,000	8 BX 05/07/03	1	BX 07/24/02
Purchasing history	"82003"	SCOTCHCAST 3" WHITE 10/BX	3M COMPANY		
EX	1	\$89,400	8 BX 05/07/03	1	BX 04/15/03
Purchasing history	"82004"	SCOTCHCAST 4" WHITE 10/BX	3M COMPANY		
EX	1	\$116,900	3 BX 05/12/03	5	BX 05/07/03
Purchasing history	"MS01"	STOCKINETTE 1" SYNTHETIC	3M COMPANY		
EA	0	\$14,950	2 EA 03/13/03	4	EA 08/22/02
Purchasing history	"EO2"	OXYGEN E SIZE CONTENTS INC HAZ, DELIVERY, ETC			705
PRAXAIR DIST INC	EA	08/27/02	FA 0 \$35,000	1	FA 01/19/03
Purchasing history	"001205"	EKG ULTRASOUND GEL 8 OZ	ABCO DEALERS INC		
EA	0	\$3,150	1 EA 07/31/02		
Purchasing history	"001222"	EKG ULTRASOUND GEL 5LTR	ABCO DEALERS INC		
EA	0	\$21,500	1 EA 09/23/02		
Purchasing history	"007888"	EKG PAPER THERM 200SHT/PD	ABCO DEALERS INC		
FK	1	\$21,500	3 PK 05/07/03	4	PK 02/09/03
Purchasing history	"007984"	EKG PAPER THERM 200SHT/PD 50 YEAR QUALITY			
ASSURANCE	ABCO DEALERS INC	PK 2 \$27,500	2	PK	
05/22/03	8	PK	05/15/03		
Purchasing history	"016659"	BULB ONLY FOR SP-HYG	ABCO DEALERS INC		
EA	0	\$5,950	1 EA 05/13/03	2	EA 06/23/02
Purchasing history	"0178"	PREG TEST CARDS Q.S. 30/K	ABCO DEALERS INC		
FX	1	\$129,500	4 BX 05/13/03	3	FX 05/04/03
Purchasing history	"0179"	PREG TEST CARDS Q.S. 90/K	ABCO DEALERS INC		
EX	0	\$263,000	2 BX 05/06/03		

Browse	Web Order #	Customer PO#	Ship to							
	000083	1201	UNIVERSITY MEDICAL CENTER NEW YORK, NY 10016-1400							
	Sort By: <input type="text" value="Product Code"/> <input type="button" value="GO"/> <input type="checkbox"/> Save as Default Items per page: <input type="text" value="10"/> <input type="button" value="GO"/> <input type="checkbox"/> Save as Default									
Below is your current order information. Click the DELETE button to delete that line item from your order. When your order is complete, click "Send Order Now", or click "Hold Order" to save this order for processing at a later date. To change quantities, change the ORD QTY value in the boxes below and click "Update Order".										
Line No.	Product No.	Product Description	Manufacturer	In Stock	ORD QTY	UM	Price	Ext. Price	Delete Item	
1	75312	SCOTCHCAST 1-STEP 3K*2.5'	3M COMPANY	<input checked="" type="checkbox"/>	<input type="text" value="1"/>	EX	\$52.650	\$52.65	<input type="button" value="Delete Item"/>	
2	92002	SCOTCHCAST 2" WHITE 10 BX	3M COMPANY	<input checked="" type="checkbox"/>	<input type="text" value="2"/>	EX	\$119.000	\$238.00	<input type="button" value="Delete Item"/>	
ORDER TOTALS										
2 Items								1 Page		<input type="button" value="Previous"/> <input type="button" value="Next"/>
Order Comments: <input type="text"/> <input type="button" value="GO"/>										
<p><i>If you wish to use a Custom Template choose one, or Please select your preferred order entry method:</i></p> Choose a template: <input type="text" value="3M Products"/> <input type="button" value="GO"/>										
<input type="button" value="Update Order Q'tys"/> <input type="button" value="Continue Shopping"/> <input type="button" value="Hold Order"/> <input type="button" value="Send Order Now"/> <input type="button" value="Product Search"/>										
<input type="button" value="Product History"/> <input type="button" value="Quick Order"/> <input type="button" value="Delete Order"/> <input type="button" value="Save Order as Template"/>										
<input type="button" value="Advanced Search"/>										

Browse	Web Order # 000083 Customer PO# 1301 Ship to UNIVERSITY MEDICAL CENTER NEW YORK CITY, NY 10016-4800 Sort By: <input type="text" value="Product Code"/> <input type="button" value="GO"/> <input type="checkbox"/> Save as Default Items per page: <input type="text" value="10"/> <input type="button" value="GO"/> <input type="checkbox"/> Save as Default <p>Below is your current order information. Click the DELETE button to delete that line item from your order. When your order is complete, click "Send Order Now", or click "Hold Order" to save this order for processing at a later date. To change quantities, change the ORD QTY value in the boxes below and click "Update Order".</p> <table border="1"> <thead> <tr> <th>Line No.</th> <th>Product No.</th> <th>Product Description</th> <th>Manufacturer</th> <th>In Stock</th> <th>ORD QTY</th> <th>UM</th> <th>Price</th> <th>Ext. Price</th> <th>Delete Item</th> </tr> </thead> <tbody> <tr> <td>1</td> <td>78312</td> <td>SCOTCHCAST 1-STEP 3X12 5/</td> <td>3M COMPANY</td> <td><input checked="" type="checkbox"/></td> <td><input type="text" value="1"/></td> <td>EX</td> <td>\$62.650</td> <td>\$62.65</td> <td><input type="button" value="Delete Item"/></td> </tr> <tr> <td>2</td> <td>80002</td> <td>SCOTCHCAST DP WHITE 10/BX</td> <td>3M COMPANY</td> <td><input checked="" type="checkbox"/></td> <td><input type="text" value="2"/></td> <td>EX</td> <td>\$141.000</td> <td>\$282.00</td> <td><input type="button" value="Delete Item"/></td> </tr> </tbody> </table> ORDER TOTALS 2 Items 1 Page Order Comments: <input type="text"/> <input type="button" value="GO"/> <p><i>If you wish to use a Custom Template choose one, or Please select your preferred order entry method:</i></p> Choose a template: <input type="text" value="3M Products"/> <input type="button" value="GO"/> <input type="button" value="Update Order Q'tys"/> <input type="button" value="Continue Shopping"/> <input type="button" value="Hold Order"/> <input type="button" value="Send Order Now"/> <input type="button" value="Product Search"/> <input type="button" value="Product History"/> <input type="button" value="Quick Order"/> <input type="button" value="Delete Order"/> <input type="button" value="Save Order as Template"/>	Line No.	Product No.	Product Description	Manufacturer	In Stock	ORD QTY	UM	Price	Ext. Price	Delete Item	1	78312	SCOTCHCAST 1-STEP 3X12 5/	3M COMPANY	<input checked="" type="checkbox"/>	<input type="text" value="1"/>	EX	\$62.650	\$62.65	<input type="button" value="Delete Item"/>	2	80002	SCOTCHCAST DP WHITE 10/BX	3M COMPANY	<input checked="" type="checkbox"/>	<input type="text" value="2"/>	EX	\$141.000	\$282.00	<input type="button" value="Delete Item"/>
Line No.	Product No.	Product Description	Manufacturer	In Stock	ORD QTY	UM	Price	Ext. Price	Delete Item																						
1	78312	SCOTCHCAST 1-STEP 3X12 5/	3M COMPANY	<input checked="" type="checkbox"/>	<input type="text" value="1"/>	EX	\$62.650	\$62.65	<input type="button" value="Delete Item"/>																						
2	80002	SCOTCHCAST DP WHITE 10/BX	3M COMPANY	<input checked="" type="checkbox"/>	<input type="text" value="2"/>	EX	\$141.000	\$282.00	<input type="button" value="Delete Item"/>																						

Browse	Web Order # 000083 Customer PO# 1301 Ship to UNIVERSITY MEDICAL CENTER NEW YORK CITY, NY 10016-4200 Sort By: <input type="text" value="Product Code"/> <input type="button" value="GO"/> <input type="checkbox"/> Save as Default Items per page: <input type="text" value="10"/> <input type="button" value="GO"/> <input type="checkbox"/> Save as Default Below is your current order information. Click the DELETE button to delete that line item from your order. When your order is complete, click "Send Order Now", or click "Hold Order" to save this order for processing at a later date. To change quantities, change the ORD QTY value in the boxes below and click "Update Order".																														
	<table border="1"> <thead> <tr> <th>Line No.</th> <th>Product No.</th> <th>Product Description</th> <th>Manufacturer</th> <th>In Stock</th> <th>ORD QTY</th> <th>UM</th> <th>Price</th> <th>Ext. Price</th> <th>Delete Item</th> </tr> </thead> <tbody> <tr> <td>1</td> <td>78312</td> <td>SCOTCHCAST 1-STEP 3X12 5/</td> <td>3M COMPANY</td> <td><input checked="" type="checkbox"/></td> <td><input type="text" value="1"/></td> <td>EX</td> <td>\$52.650</td> <td>\$52.65</td> <td><input type="button" value="Delete Item"/></td> </tr> <tr> <td>2</td> <td>80002</td> <td>SCOTCHCAST EP WHITE 10/BX</td> <td>3M COMPANY</td> <td><input checked="" type="checkbox"/></td> <td><input type="text" value="2"/></td> <td>EX</td> <td>\$141.000</td> <td>\$282.00</td> <td><input type="button" value="Delete Item"/></td> </tr> </tbody> </table>	Line No.	Product No.	Product Description	Manufacturer	In Stock	ORD QTY	UM	Price	Ext. Price	Delete Item	1	78312	SCOTCHCAST 1-STEP 3X12 5/	3M COMPANY	<input checked="" type="checkbox"/>	<input type="text" value="1"/>	EX	\$52.650	\$52.65	<input type="button" value="Delete Item"/>	2	80002	SCOTCHCAST EP WHITE 10/BX	3M COMPANY	<input checked="" type="checkbox"/>	<input type="text" value="2"/>	EX	\$141.000	\$282.00	<input type="button" value="Delete Item"/>
Line No.	Product No.	Product Description	Manufacturer	In Stock	ORD QTY	UM	Price	Ext. Price	Delete Item																						
1	78312	SCOTCHCAST 1-STEP 3X12 5/	3M COMPANY	<input checked="" type="checkbox"/>	<input type="text" value="1"/>	EX	\$52.650	\$52.65	<input type="button" value="Delete Item"/>																						
2	80002	SCOTCHCAST EP WHITE 10/BX	3M COMPANY	<input checked="" type="checkbox"/>	<input type="text" value="2"/>	EX	\$141.000	\$282.00	<input type="button" value="Delete Item"/>																						
	ORDER TOTALS 2 Items \$340.65 2 Items 1 Page Previous 1 Next Order Comments: <input type="text"/> <input type="button" value="GO"/>																														
	<p><i>If you wish to use a Custom Template choose one, or Please select your preferred order entry method.</i></p> Choose a template: <input type="text" value="3M Products"/> <input type="button" value="GO"/>																														
	<div style="border: 2px solid blue; border-radius: 50%; padding: 10px; display: inline-block;"> <input type="button" value="Update Order Qty's"/> <input type="button" value="Continue Shopping"/> <input type="button" value="Hold Order"/> <input type="button" value="Send Order Now"/> <input type="button" value="Product Search"/> <input type="button" value="Product History"/> <input type="button" value="Quick Order"/> <input type="button" value="Delete Order"/> <input type="button" value="Save Order as Template"/> </div>																														

Browse

Web Order #	Customer PO#	Ship to
000083	1201	UNIVERSITY MEDICAL CENTER NEW YORK CITY, NY 10018-1450

Enter your search criteria and click on Search. [Click here to view Search Tips](#)

Product Code:

Product Description:

Manufacturer:

Manufacturer Part#:

Customer Item#:

[Click here to Search Product History Only](#)

Product Master Maintenance

Product # 2346 100674

76.Environment Code Flag
 77.Combo Code
 78.PO Combo Code
 79.Qualify for Free Freight
 80.Promotional Price Beg Date End Date
 81.Country of Origin 000 U.S.A.

83.Wild Card SPOGE
 RemoteNet SPNGE

84.Product Assoc Codes 01

85.Catalog Product Y

87.Image Xref
 88.Thumbnail Xref
 89.Datasheet Xref
 90.Small Desc for Web

86.Web Catalog Codes

Prod Type	Prod Class	Product Category	Product Subcatg
013	001		

Features: Made from high-grade 100% US grown cotton. Exceeds USP Type VII gauze

91.Large Desc for Web

ENTER LINE # TO CHANGE,DELETE TO DELETE,0 TO ACCEPT XXXXXX PAGE 3 OF 5

- Browse**
- MILONIC
 - Carpet Cleaners
 - Cats Eye/Optic Beads
 - Desk Drawer Keys
 - Kendall Healthcare Prods
 - Medical Specialty
 - Medical Supplies
 - Office Furniture Set
 - Office Supplies
 - Plastic Desk Drawers

Web Order #	Customer PO#	Ship to
001533	None	UNIVERSITY MEDICAL CENTER EDMONTON, NJ 07000

Enter your search criteria and click on Search. [Click here to view Search Tips](#)

Product Code:
Product Description: SPNGE
Manufacturer: SELECT A MANUFACTURER
Manufacturer Part#: SPNGE
Customer Item#:

[Click here to Search Product History Only](#)

- Browse**
- MILONIC
 - Carpet Cleaners
 - Cats Eye/Optic Beads
 - Desk Drawer Keys
 - Kendall Healthcare Prods
 - Medical Specialty
 - Medical Supplies
 - Office Furniture Set
 - Office Supplies
 - Plastic Desk Drawers
 - Plastic Desk Sides
 - Plastic Desk Tops
 - Plastic Desks

Web Order #	Customer PO#	Ship to
001533	None	UNIVERSITY MEDICAL CENTER EDMONTON, NJ 07000

Sort By: Save as Default
 Items per page: Save as Default

Enter Quantities in boxes, and click on UPDATE button below to add quantities to your current order.
Click on a Product Picture or Product number for additional product information.

SPNGE

Product No. Cust Item#	Description	In Stock	Mfr	Mfr PN#	Price/UM	Qty
 2048	CURITY Gauze Sponges Bulk 3"x3", 12 Ply	X	Kendall Healthcare	2048	9700.00 EA / 1	<input type="text"/>

1 Item

1 Page

[Previous](#) | [Next](#)

Browse

Web Order #	Customer PO#	Ship to
000083	1201	UNIVERSITY MEDICAL CENTER NEW YORK CITY, NY 10018-1480

Sort By: Product Code Save as Default
 Items per page: Product Code Save as Default
 Enter Quantities in boxes, and click on a Product Picture or Product Description to add quantities to your current order. For more information, click on a Product Picture or Product Description.

- Manufacturer Name
- Manufacturer Product Code
- Product Description
- Product Class
- Avg Monthly Usage

WA22

Product No. Cust Item#	Description	In Stock	Mfr	Mfr PN#	Price/UM	Qty
 WA22820	2.5V POCKET OTOSCOPE	<input checked="" type="checkbox"/>	WELCH ALLYN		\$17.260 BX	<input type="text"/>
 WA22001	2.5V POCKET OTOSCOPE	<input checked="" type="checkbox"/>	WELCH ALLYN		\$20.080 PK	<input type="text"/>

2 Items 1 Page [Previous](#) [Next](#)

Browse	Web Order #	Customer PO#	Ship to
	000083	1201	UNIVERSITY MEDICAL CENTER NEW YORK CITY, NY 10018-1460

Sort By: Product Code Save as Default

Items per page:
Enter quantities in boxes, and
Click on a Product Picture or



2 items

Browse - Item Detail >> WA22821 - Windows Internet Ex...

http://hosting.tshinc.com/cgi-bin/olecgi.exe/BrowseDtl012?browseno=000077*DEMO&submitvar=WA22

Description:
Welch Allyn 2.5v PocketScope Otoscope/Throat Illuminator with AA Alkaline Battery Handle. Model 22821 includes soft case.

2.5V Otoscope also has built in throat illuminator - two in one instrument! Features halogen illumination and fiber optics for a cool light with no reflections or obstructions, plus a rectangular viewing lens for instrumentation under magnification. 2.5V PocketScope handle has a smooth rheostat to control light intensity and features a handy pocket clip.

Done Internet 100%

Browse

Web Order #	Customer PO#	Ship to
000083	1201	UNIVERSITY MEDICAL CENTER NEW YORK CITY, NY 10018-1480

Sort By: Save as Default
 Items per page: Save as Default

Enter Quantities in boxes, and click an UPDATE button below to add quantities to your current order.
 Click on a Product Picture or Product Number for additional product information.

WA22

Product No. Cust Item#	Description	In Stock	Mfr	Mfr PN#	Price/UM	Qty
 WA22821	2.5V POCKET OTOSCOPE	<input checked="" type="checkbox"/>	WELCH ALLYN		\$17.260 BX	<input type="text"/>
 WA22821	2.5V POCKET OTOSCOPE	<input checked="" type="checkbox"/>	WELCH ALLYN		\$20.000 PK	<input type="text"/>

2 Items

1 Page

Previous 1 Next

2.5v POCKET OTOSCOPE



Product No. :	WA22820
Product Type:	
Product Class:	
Description:	Welch Allyn 2.5v PocketScope Oscope/Throat Illuminator with AA Alkaline Battery Handle. Model 22820 Welch Allyn quality instruments in a pocket size set.
Additional Information:	2.5V Oscope also has built in throat alluminator - two in one instrument! Features halogen illumination and fiber optics for a cool light with no reflections or obstructions, plus a

Ord. Qty	UM	Price	Product No.	Product Description	Manufacturer	Stock UM	Sel UM
<input type="text"/>	BX	\$17.250	WA22820	2.5V POCKET OTOSCOPE		BX	BX

Enter quantity in box to the left, then click on the "Add To Order" button to update your current order.

[View MSDS](#)

Your Purchase statistics for this product:

Note: All usage is displayed in the Stocking Unit of Measure.

Previous 6 Purchases	Annual Usage													
	Year	Jan	Feb	Mar	Apr	May	Jun	Jul	Aug	Sep	Oct	Nov	Dec	Total
1 BX 10/22/02	2008	0	0	0	0	0	0	0	0	0	0	0	0	0
2 BX 10/17/02	2007	0	0	0	0	0	0	0	8	0	8	3	19	
8 BX 09/23/02	2006	0	0	0	0	0	0	0	0	0	0	0	0	
6 BX 07/08/02														
2 BX 07/16/02														

[Current Order](#)
[Add to Order](#)
[Product History](#)
[Product Search](#)
[Quick Order](#)

2.5V POCKET OTOSCOPE



Product No. :	WA22820
Product Type:	
Product Class:	
Description:	<p>Welch Allyn 2.5v PocketScope Oscope/Throat Illuminator with AA Alkaline Battery Handle. Model 22820</p> <p>Welch Allyn quality instruments in a pocket size set.</p>
Additional Information:	<p>2.5V Oscope also has built in throat illuminator - two in one instrument!</p> <p>Features halogen illumination and fiber optics for a one' light with no reflections or obstructions. plus a</p>

Ord. Qty	UM	Price	Product No.	Product Description	Manufacturer	Stock UM	Sel UM
1	BX	\$17.250	WA22820	2.5V POCKET OTOSCOPE		BX	BX

Enter quantity in box to the left, then click on the "Add To Order" button to update your current order.

[View MSDS](#)

Your Purchase statistics for this product:

Note: All usage is displayed in the Stocking Unit of Measure.

Previous 6 Purchases	Annual Usage												Total	
	Year	Jan	Feb	Mar	Apr	May	Jun	Jul	Aug	Sep	Oct	Nov		Dec
1 EX 10/22/02	2008	0	0	0	0	0	0	0	0	0	0	0	0	0
2 EX 10/17/02	2007	0	0	0	0	0	0	0	8	0	8	3	19	
8 EX 09/23/02	2006	0	0	0	0	0	0	0	0	0	0	0	0	
8 EX 07/26/02														
2 EX 07/18/02														

[Current Order](#)
[Add to Order](#)
[Product History](#)
[Product Search](#)
[Quick Order](#)

Browse	Web Order #	Customer PO#	Ship to						
	000063	1201	UNIVERSITY MEDICAL CENTER NEW YORK CITY, NY 10016-1450						
	Sort By: Product Code	<input type="button" value="GO"/>	<input type="checkbox"/> Save as Default						
	Items per page: 10	<input type="button" value="GO"/>	<input type="checkbox"/> Save as Default						
<p>Below is your current order information. Click the DELETE button to delete that line item from your order. When your order is complete, click "Send Order Now", or click "Hold Order" to save this order for processing at a later date. To change quantities, change the ORD QTY value in the boxes below and click "Update Order".</p>									
Line No.	Product No.	Product Description	Manufacturer	In Stock	ORD QTY	UM	Price	Ext. Price	Delete Item
1	78012	SCOTCHCAST 1-GT 3X12.5'	GM COMPANY	<input checked="" type="checkbox"/>	<input type="text" value="1"/>	DK	\$62.650	\$62.65	<input type="button" value="Delete Item"/>
2	82002	SCOTCHCAST 2" WHITE 10 DK	GM COMPANY	<input checked="" type="checkbox"/>	<input type="text" value="2"/>	DK	\$144.000	\$288.00	<input type="button" value="Delete Item"/>
3	WA22020	2.5" POCKET OTCSCOPE	WELCH ALLYN	<input checked="" type="checkbox"/>	<input type="text" value="1"/>	DK	\$17.250	\$17.25	<input type="button" value="Delete Item"/>
ORDER TOTALS									
3 Items								\$357.90	
3 Items		1 Page			Previous 1 Next				
Order Comments:				<input type="button" value="GO"/>					
<p><i>If you wish to use a Custom Template choose one, or Please select your preferred order entry method:</i></p>									
Choose a template: GM Products				<input type="button" value="GO"/>					
<input type="button" value="Update Order Qty's"/>			<input type="button" value="Continue Shopping"/>		<input type="button" value="Hold Order"/>		<input type="button" value="Send Order Now"/>		<input type="button" value="Product Search"/>
<input type="button" value="Product History"/>				<input type="button" value="Lock Order"/>		<input type="button" value="Delete Order"/>		<input type="button" value="Save Order as Template"/>	
<input type="button" value="Advanced Search"/>									

Web Order #	Customer PO#	Ship to
000083	1201	UNIVERSITY MEDICAL CENTER NEW YORK CITY NY 10016-1450

Current Template: 3M Products

[Click here if you wish to print this template or export to Excel.](#)

5 Items are on this template.

Sort By: Save as Default
 Items per page: Save as Default
 Manufacturer:
 Choose a template:

Enter quantities in boxes at left and click an U-UNIT button below to add quantities to your current order. Click on any Product Description for additional product information. Click on Purchase History for purchase details.

Product No. Ord. Qty/UM	Avg.M. Usage	Product Description Price/UM	In Stock	Mfr Mfr P/N#	Purchase History	Delete Item
76312 <input type="text" value="0"/> BX	0	SCOTCH-CAST 1-STEP 3X12 B/ \$62.660 BX	<input checked="" type="checkbox"/>	3M COMPANY		<input type="button" value="Delete Item"/>
76416 <input type="text" value="0"/> BX	0	SCOTCH-CAST 1-STEP 4X16 B/ \$69.960 BX		3M COMPANY		<input type="button" value="Delete Item"/>
7680766603 <input type="text" value="0"/> EA	0	EINSTRAL & TUBING FOR CARDI \$78.960 EA	<input checked="" type="checkbox"/>	3M COMPANY		<input type="button" value="Delete Item"/>
82002 <input type="text" value="1"/> BX	1	SCOTCH-CAST 2" WHITE 10/BX \$72.000 BX	<input checked="" type="checkbox"/>	3M COMPANY	8 BX 06/07/05 1 BX 07/24/02	<input type="button" value="Delete Item"/>
82002D <input type="text" value="0"/> BX	0	SCOTCH-CAST 2"SLUC 10/BX \$72.000 BX	<input checked="" type="checkbox"/>	3M COMPANY		<input type="button" value="Delete Item"/>

5 Items

1 Page

Previous 1 Next

Web Order #	Customer PO#	Ship to
000083	1201	UNIVERSITY MEDICAL CENTER NEW YORK CITY NY 10016-1450

Current Template: 3M Products

[Click here if you wish to print this template or export to Excel.](#)

5 Items are on this template.

Sort By: Save as Default
 Items per page: Save as Default
 Manufacturer:
 Choose a template:

Enter quantities in boxes at left and click an U-UNIT button below to add quantities to your current order. Click on any Product Description for additional product information. Click on Purchase History for purchase details.

Product No. Ord. Qty/UM	Avg.M. Usage	Product Description Price/UM	In Stock	Mfr Mfr P/N#	Purchase History	Delete Item
76312 <input type="text" value="0"/> BX	0	SCOTCH-CAST 1-STP 3X12 B/ \$62.66C BX	<input checked="" type="checkbox"/>	3M COMPANY		<input type="button" value="Delete Item"/>
76416 <input type="text" value="0"/> BX	0	SCOTCH-CAST 1-STP 4X16 B/ \$69.96C BX		3M COMPANY		<input type="button" value="Delete Item"/>
7680766603 <input type="text" value="0"/> EA	0	EINARAL & TUBING FOR CARDI \$78.96C EA	<input checked="" type="checkbox"/>	3M COMPANY		<input type="button" value="Delete Item"/>
82002 <input type="text" value="1"/> BX	1	SCOTCH-CAST 2" WHITE 10/BX \$72.00C BX	<input checked="" type="checkbox"/>	3M COMPANY	8 BX 06/07/05 1 BX 07/24/02	<input type="button" value="Delete Item"/>
82002D <input type="text" value="0"/> BX	0	SCOTCH-CAST 2"SLUC 10/BX \$72.00C BX	<input checked="" type="checkbox"/>	3M COMPANY		<input type="button" value="Delete Item"/>

5 Items

1 Page

Previous 1 Next

Web Order #	Customer PO#	Ship to
000083	1201	UNIVERSITY MEDICAL CENTER NEW YORK CITY NY 10016-1450

Current Template: 3M Products

[Click here if you wish to print this template or export to Excel.](#)

5 Items are on this template.

Sort By: Save as Default
 Items per page: Save as Default
 Manufacturer:
 Choose a template:

Enter quantities in boxes at left and click an U-UNIT button below to add quantities to your current order. Click on any Product Description for additional product information. Click on Purchase History for purchase details.

Product No. Ord. Qty/UM	Avg.M. Usage	Product Description Price/UM	In Stock	Mfr Mfr P/N#	Purchase History	Delete Item
76312 <input type="text" value="0"/> BX	0	SCOTCH-CAST 1-STEP 3X12 B/ \$62.66C BX	<input checked="" type="checkbox"/>	3M COMPANY		<input type="button" value="Delete Item"/>
76416 <input type="text" value="0"/> BX	0	SCOTCH-CAST 1-STEP 4X16 B/ \$69.96C BX		3M COMPANY		<input type="button" value="Delete Item"/>
7680766603 <input type="text" value="0"/> EA	0	EINSTRAL & TUBING FOR CARDI \$78.96C EA	<input checked="" type="checkbox"/>	3M COMPANY		<input type="button" value="Delete Item"/>
82002 <input type="text" value="1"/> BX	1	SCOTCH-CAST 2" WHITE 10/BX \$72.00C BX	<input checked="" type="checkbox"/>	3M COMPANY	8 BX 06/07/05 1 BX 07/24/02	<input type="button" value="Delete Item"/>
82002D <input type="text" value="0"/> BX	0	SCOTCH-CAST 2"SLUC 10/BX \$72.00C BX	<input checked="" type="checkbox"/>	3M COMPANY		<input type="button" value="Delete Item"/>

5 Items

1 Page

Previous 1 Next

Web Order #	Customer PO#	Ship to
000083	1201	UNIVERSITY MEDICAL CENTER NEW YORK CITY NY 10016-1450

Items per page:

Enter Product ID and Quantity. Click the "Add To Order" button below.
Note: Items will be added to your Order in the standard Selling Unit of Measure.

Product No.	QTY
<input type="text"/>	<input type="text"/>
<input type="text"/>	<input type="text"/>
<input type="text"/>	<input type="text"/>
<input type="text"/>	<input type="text"/>
<input type="text"/>	<input type="text"/>
<input type="text"/>	<input type="text"/>
<input type="text"/>	<input type="text"/>
<input type="text"/>	<input type="text"/>
<input type="text"/>	<input type="text"/>
<input type="text"/>	<input type="text"/>
<input type="text"/>	<input type="text"/>

If you wish to use a Custom Template choose one or Please select your preferred order entry method:

Choose a template:

<input type="button" value="Current Order"/>	<input type="button" value="Add to Order"/>	
<input type="button" value="Product History"/>	<input type="button" value="Product Search"/>	<input type="button" value="Quick Order"/>

Web Order #	Customer PO#	Ship to
000083	1201	UNIVERSITY MEDICAL CENTER NEW YORK CITY NY 10016-1450

Items per page:

Enter Product ID and Quantity. Then click the "Add To Order" button below.
Note: Items will be added to the Current Order in the standard Selling Unit of Measure

Product No.	QTY
<input type="text" value="ED329431"/>	<input type="text" value="10"/>
<input type="text" value="ED329466"/>	<input type="text" value="10"/>
<input type="text" value="Humalog"/>	<input type="text" value="1"/>
<input type="text" value="001235"/>	<input type="text" value="3"/>
<input type="text"/>	<input type="text"/>
<input type="text"/>	<input type="text"/>
<input type="text"/>	<input type="text"/>
<input type="text"/>	<input type="text"/>
<input type="text"/>	<input type="text"/>
<input type="text"/>	<input type="text"/>

*If you wish to use a Custom Template choose one or
Please select your preferred order entry method:*

Choose a template:

Browse	Web Order # 000063 Customer PO# 1201 Ship to UNIVERSITY MEDICAL CENTER NEW YORK CITY, NY 10016-1450 Sort By: <input type="text" value="Product Code"/> <input type="button" value="GO"/> <input type="checkbox"/> Save as Default Items per page: <input type="text" value="10"/> <input type="button" value="GO"/> <input type="checkbox"/> Save as Default Below is your current order information. Click the DELETE button to delete that line item from your order. When your order is complete, click "Send Order Now", or click "Hold Order" to save this order for processing at a later date. To change quantities, change the ORD QTY value in the boxes below and click "Update Order".																																																																																										
	<table border="1"> <thead> <tr> <th>Line No.</th> <th>Product No.</th> <th>Product Description</th> <th>Manufacturer</th> <th>In Stock</th> <th>ORD QTY</th> <th>UM</th> <th>Price</th> <th>Ext. Price</th> <th>Delete Item</th> </tr> </thead> <tbody> <tr> <td>1</td> <td>001205</td> <td>EKO ULTRACOND OCL 6 OZ</td> <td>ASCO DEALERS INC</td> <td><input checked="" type="checkbox"/></td> <td><input type="text" value="3"/></td> <td>EA</td> <td>\$0.450</td> <td>\$00.35</td> <td><input type="button" value="Delete Item"/></td> </tr> <tr> <td>2</td> <td>76912</td> <td>SCOTCHCAST 1-GT 12 OX12 5'</td> <td>GM COMPANY</td> <td><input checked="" type="checkbox"/></td> <td><input type="text" value="1"/></td> <td>DX</td> <td>\$52.850</td> <td>\$52.85</td> <td><input type="button" value="Delete Item"/></td> </tr> <tr> <td>3</td> <td>7000706503</td> <td>D NATURAL 8-TJDINO FOR CARD II</td> <td>GM COMPANY</td> <td><input checked="" type="checkbox"/></td> <td><input type="text" value="2"/></td> <td>EA</td> <td>\$157.000</td> <td>\$315.00</td> <td><input type="button" value="Delete Item"/></td> </tr> <tr> <td>4</td> <td>02002</td> <td>SCOTCHCAST 2" WHITE 10 DX</td> <td>GM COMPANY</td> <td><input checked="" type="checkbox"/></td> <td><input type="text" value="2"/></td> <td>DX</td> <td>\$144.000</td> <td>\$288.00</td> <td><input type="button" value="Delete Item"/></td> </tr> <tr> <td>5</td> <td>ED020431</td> <td>6YR NGULIN 200 20X1/2"</td> <td>ASCO DEALERS INC</td> <td><input checked="" type="checkbox"/></td> <td><input type="text" value="10"/></td> <td>DX</td> <td>\$000.500</td> <td>\$0,005.00</td> <td><input type="button" value="Delete Item"/></td> </tr> <tr> <td>6</td> <td>ED020466</td> <td>28GX1/2 ULTRA FINE .600</td> <td>SENECA MEDICAL INC</td> <td><input checked="" type="checkbox"/></td> <td><input type="text" value="10"/></td> <td>DX</td> <td>\$10.000</td> <td>\$100.00</td> <td><input type="button" value="Delete Item"/></td> </tr> <tr> <td>7</td> <td>HUMALOG</td> <td>HUMALOG 10 ML INSULIN</td> <td></td> <td><input checked="" type="checkbox"/></td> <td><input type="text" value="1"/></td> <td>EA</td> <td>\$12.950</td> <td>\$12.95</td> <td><input type="button" value="Delete Item"/></td> </tr> <tr> <td>8</td> <td>WA22820</td> <td>2.5V POCKET OTOSCOPE</td> <td>WELCH ALLYN</td> <td><input checked="" type="checkbox"/></td> <td><input type="text" value="1"/></td> <td>DX</td> <td>\$17.250</td> <td>\$17.25</td> <td><input type="button" value="Delete Item"/></td> </tr> </tbody> </table>	Line No.	Product No.	Product Description	Manufacturer	In Stock	ORD QTY	UM	Price	Ext. Price	Delete Item	1	001205	EKO ULTRACOND OCL 6 OZ	ASCO DEALERS INC	<input checked="" type="checkbox"/>	<input type="text" value="3"/>	EA	\$0.450	\$00.35	<input type="button" value="Delete Item"/>	2	76912	SCOTCHCAST 1-GT 12 OX12 5'	GM COMPANY	<input checked="" type="checkbox"/>	<input type="text" value="1"/>	DX	\$52.850	\$52.85	<input type="button" value="Delete Item"/>	3	7000706503	D NATURAL 8-TJDINO FOR CARD II	GM COMPANY	<input checked="" type="checkbox"/>	<input type="text" value="2"/>	EA	\$157.000	\$315.00	<input type="button" value="Delete Item"/>	4	02002	SCOTCHCAST 2" WHITE 10 DX	GM COMPANY	<input checked="" type="checkbox"/>	<input type="text" value="2"/>	DX	\$144.000	\$288.00	<input type="button" value="Delete Item"/>	5	ED020431	6YR NGULIN 200 20X1/2"	ASCO DEALERS INC	<input checked="" type="checkbox"/>	<input type="text" value="10"/>	DX	\$000.500	\$0,005.00	<input type="button" value="Delete Item"/>	6	ED020466	28GX1/2 ULTRA FINE .600	SENECA MEDICAL INC	<input checked="" type="checkbox"/>	<input type="text" value="10"/>	DX	\$10.000	\$100.00	<input type="button" value="Delete Item"/>	7	HUMALOG	HUMALOG 10 ML INSULIN		<input checked="" type="checkbox"/>	<input type="text" value="1"/>	EA	\$12.950	\$12.95	<input type="button" value="Delete Item"/>	8	WA22820	2.5V POCKET OTOSCOPE	WELCH ALLYN	<input checked="" type="checkbox"/>	<input type="text" value="1"/>	DX	\$17.250	\$17.25	<input type="button" value="Delete Item"/>
Line No.	Product No.	Product Description	Manufacturer	In Stock	ORD QTY	UM	Price	Ext. Price	Delete Item																																																																																		
1	001205	EKO ULTRACOND OCL 6 OZ	ASCO DEALERS INC	<input checked="" type="checkbox"/>	<input type="text" value="3"/>	EA	\$0.450	\$00.35	<input type="button" value="Delete Item"/>																																																																																		
2	76912	SCOTCHCAST 1-GT 12 OX12 5'	GM COMPANY	<input checked="" type="checkbox"/>	<input type="text" value="1"/>	DX	\$52.850	\$52.85	<input type="button" value="Delete Item"/>																																																																																		
3	7000706503	D NATURAL 8-TJDINO FOR CARD II	GM COMPANY	<input checked="" type="checkbox"/>	<input type="text" value="2"/>	EA	\$157.000	\$315.00	<input type="button" value="Delete Item"/>																																																																																		
4	02002	SCOTCHCAST 2" WHITE 10 DX	GM COMPANY	<input checked="" type="checkbox"/>	<input type="text" value="2"/>	DX	\$144.000	\$288.00	<input type="button" value="Delete Item"/>																																																																																		
5	ED020431	6YR NGULIN 200 20X1/2"	ASCO DEALERS INC	<input checked="" type="checkbox"/>	<input type="text" value="10"/>	DX	\$000.500	\$0,005.00	<input type="button" value="Delete Item"/>																																																																																		
6	ED020466	28GX1/2 ULTRA FINE .600	SENECA MEDICAL INC	<input checked="" type="checkbox"/>	<input type="text" value="10"/>	DX	\$10.000	\$100.00	<input type="button" value="Delete Item"/>																																																																																		
7	HUMALOG	HUMALOG 10 ML INSULIN		<input checked="" type="checkbox"/>	<input type="text" value="1"/>	EA	\$12.950	\$12.95	<input type="button" value="Delete Item"/>																																																																																		
8	WA22820	2.5V POCKET OTOSCOPE	WELCH ALLYN	<input checked="" type="checkbox"/>	<input type="text" value="1"/>	DX	\$17.250	\$17.25	<input type="button" value="Delete Item"/>																																																																																		
	ORDER TOTALS 8 Items \$4,810.00 8 Items 1 Page Previous 1 Next Order Comments: <input type="text"/> <input type="button" value="GO"/>																																																																																										
	If you wish to use a Custom Template choose one, or Please select your preferred order entry method: Choose a template: <input type="text" value="GM Products"/> <input type="button" value="GO"/>																																																																																										

Below is your current order information. Click the DELETE button to delete that line item from your order. When your order is complete, click "Send Order Now", or click "Hold Order" to save this order for processing at a later date. To change quantities, change the ORD QTY value in the boxes below and click "Update Order".

Line No.	Product No.	Product Description	Manufacturer	In Stock	ORD QTY	UM	Price	Ext. Price	Delete Item
1	901205	EKG ULTRASOUND GEL 8 OZ	ABOD DEALERS INC.	<input checked="" type="checkbox"/>	3	EA	\$9.450	\$28.350	Delete Item
2	76312	SCOTCHCAST 1-STP 5X12 B/	3M COMPANY	<input checked="" type="checkbox"/>	1	EX	\$62.650	\$62.650	Delete Item
3	7690760583	BINAURAL & TUEING FOR CARD II	3M COMPANY	<input checked="" type="checkbox"/>	2	EA	\$157.900	\$315.800	Delete Item
4	62902	SCOTCHCAST 2" WHITE 10/EX	3M COMPANY	<input checked="" type="checkbox"/>	2	EX	\$144.000	\$288.000	Delete Item
5	B0329451	5X1/2 INEUL N.500 29X1/2"	ABOD DEALERS INC.	<input checked="" type="checkbox"/>	10	EX	\$999.500	\$9,995.000	Delete Item
6	B0329458	29GX1/2 ULTRA FINE .500	SENECA MEDICAL INC		10	EX	\$10.000	\$100.000	Delete Item
7	11UMAL00	11UMAL00 10 ML INEUL N		<input checked="" type="checkbox"/>	1	EA	\$12.050	\$12.050	Delete Item
8	WA22820	2.5X POCKET OTOSCOPE	WELCH ALLYN	<input checked="" type="checkbox"/>	1	EX	\$17.250	\$17.250	Delete Item

ORDER TOTALS

8 Items \$4,810.00

8 Items

1 Page

Previous Next

Order Comments:

GO

If you wish to use a Custom Template choose one, or Please select your preferred order entry method:

Choose a template: 3M Products

Advanced Search

Enter your search criteria and click Search.

Prod Code:

Description:

Click here to Search Product History Only

Browse

Web Order #	Customer PO#	Ship to
000083	1201	UNIVERSITY MEDICAL CENTER NEW YORK CITY, NY 10018-1460

Sort By: Save as Default
 Items per page: Save as Default

Enter Quantities in boxes, and click an UPDATE button below to add quantities to your current order.
 Click on a Product Picture or Product Number for additional product information.

WA

Product No. Cust Item#	Description	In Stock	Mfr	Mfr PN#	Price/UM	Qty
 101000WAL	101000 WATCH (WALMART)		A1000		\$29.000 EA	<input type="text"/>
 WA21000	OTOSCOPE 3.5V DINER WELCH	<input checked="" type="checkbox"/>	WELCH ALLYN		\$153.000 EA	<input type="text"/>
 WA22820	2.5V ROCKET OTOSCOPE	<input checked="" type="checkbox"/>	WELCH ALLYN		\$17.080 BX	<input type="text"/>
 WA22821	2.5V POCKET OTOSCOPE	<input checked="" type="checkbox"/>	WELCH ALLYN		\$29.680 PK	<input type="text"/>

Browse

Web Order #	Customer PO#	Ship to
000083	1201	UNIVERSITY MEDICAL CENTER NEW YORK CITY, NY 10018-1460

Sort By: Save as Default
 Items per page: Save as Default

Enter Quantities in boxes, and click an UPDATE button below to add quantities to your current order.
 Click on a Product Picture or Product Number for additional product information.

WA

Product No. Cust Item#	Description	In Stock	Mfr	Mfr PN#	Price/UM	Qty
	101000 WATCH (WALMART)		A1000		\$29.000 EA	<input type="text"/>
	WA21000 OTOSCOPE 3.5V DINER WELCH	<input checked="" type="checkbox"/>	WELCH ALLYN		\$153.000 EA	<input type="text"/>
	WA22820 2.5V ROCKET OTOSCOPE	<input checked="" type="checkbox"/>	WELCH ALLYN		\$17.080 BX	<input type="text"/>
	WA22821 2.5V POCKET OTOSCOPE	<input checked="" type="checkbox"/>	WELCH ALLYN		\$29.580 PK	<input type="text"/>

Items per page:



Save as Default

Below is your current order information. Click the DELETE button to delete that line item from your order. When your order is complete, click "Send Order Now", or click "Hold Order" to save this order for processing at a later date. To change quantities, change the ORD QTY value in the boxes below and click "Update Order".

Line No.	Product No.	Product Description	Manufacturer	In Stock	ORD QTY	UM	Price	Ext. Price	Delete Item
1	001206	EKG ULTRASOUND GEL 8 OZ	ABCO DEALERS INC	<input checked="" type="checkbox"/>	<input type="text" value="3"/>	EA	\$9.460	\$28.38	Delete Item
2	76512	SCOTCHCAST 1-STEP 5X12 5/8"	3M COMPANY	<input checked="" type="checkbox"/>	<input type="text" value="1"/>	BX	\$62.650	\$62.65	Delete Item
3	7861786583	E-NATURAL & TUEING FOR CARD	3M COMPANY	<input checked="" type="checkbox"/>	<input type="text" value="2"/>	EA	\$157.900	\$315.80	Delete Item
4	82002	SCOTCHCAST 2" (WHITE) 10/BX	3M COMPANY	<input checked="" type="checkbox"/>	<input type="text" value="2"/>	BX	\$144.000	\$288.00	Delete Item
5	ED329421	SYR. INSULIN 300 25X1/2"	ABCO DEALERS INC	<input checked="" type="checkbox"/>	<input type="text" value="5"/>	BX	\$399.500	\$1,997.50	Delete Item
6	ED329486	29GX1/2 ULTRA FINE .600	SENECA MEDICAL INC	<input type="checkbox"/>	<input type="text" value="10"/>	BX	\$10.000	\$100.00	Delete Item
7	HUMALOG	HUMALOG 10 ML INSULIN		<input checked="" type="checkbox"/>	<input type="text" value="1"/>	EA	\$12.950	\$12.95	Delete Item
8	WA21000	OTOSCOPE 3.5V OPER W/SPEC	WELCH ALLYN	<input checked="" type="checkbox"/>	<input type="text" value="1"/>	EA	\$153.000	\$153.00	Delete Item
9	WA23220	2.5V POCKET OTOSCOPE	WELCH ALLYN	<input checked="" type="checkbox"/>	<input type="text" value="1"/>	BX	\$17.250	\$17.25	Delete Item

ORDER TOTALS

9 Items \$4,905.00

9 Items

1 Page

Previous | Next

Order Comments:



Advanced Search

Enter your search criteria and click Search.

Prod Code:
 Description:

Click here to Search Product History Only



If you wish to use a Custom Template choose one, or Please select your preferred order entry method:

Choose a template:



Order#	Total Amount
000080	\$1,571.75

Order Hold Notice

[About Online Ordering](#) [Change Password](#) [Place an Order](#) [Inquiries](#) [Help](#) [Contact Us](#) [Home](#)

Web Order #	Customer PO#	Ship to
000080	1201	UNIVERSITY MEDICAL CENTER NEW YORK CITY, NY 10018-1480

The above order has been placed on Order Hold.

You may add or delete items to this order the next time you log in.

Click [GO](#) to return to Order Entry and place a new order. [GO](#)

Copyright © 2008 The Systems House, Inc.
Problems? [Click here to email the Webmaster](#)

Welcome Mr. Demo Customer

The Following orders are on hold.
 Click on a Web Order Number to resume your
 order

OR

[Click Here to Place a New Order](#)

Sort By:

Items per page:

Web Order#	Customer PO	Ordered By	Order Date	Order Amt	Status
C0C039	1000	Phil P	12/03/08	\$3,920.62	In Progress
C0C040	8700	Danah T	12/03/08	\$1,498.40	In Progress
C0C041	1300	Tom P	12/03/08	\$1,181.05	On Hold
C0C058	330	desdesas	12/03/08	\$5.00	On Hold
C0C063	1201	Lauren T	12/03/08	\$1,871.75	On Hold

5 Items

1 Page

[Previous](#) | [Next](#)

Welcome Mr. Demo Customer

The Following orders are on hold.
 Click on a Web Order Number to resume your
 order

OR

[Click Here to Place a New Order](#)

Sort By:

Items per page:

Web Order#	Customer PO	Ordered By	Order Date	Order Amt	Status
C0C039	1000	Phil P	12/03/08	\$3,920.62	In Progress
C0C040	6700	Danah T	12/03/08	\$1,496.40	In Progress
C0C041	1300	Tom P	12/03/08	\$1,181.05	On Hold
C0C058	330	desdesas	12/03/08	\$5.00	On Hold
C0C063	1201	Lauren T	12/03/08	\$1,671.75	On Hold

5 Items

1 Page

[Previous](#) | [Next](#)

Sort By: Product Code Save as Default

Items per page: 10 Save as Default

Below is your current order information. Click the DELETE button to delete that line item from your order. When your order is complete, click "Send Order Now", or click "Hold Order" to save this order for processing at a later date. To change quantities, change the ORD QTY value in the boxes below and click "Update Order".

Line No.	Product No.	Product Description	Manufacturer	In Stock	ORD QTY	UM	Price	Ext. Price	Delete Item
1	001206	EKG ULTRASOUND GEL 8 OZ	ABCD DEALERS INC	<input checked="" type="checkbox"/>	3	EA	\$9.450	\$28.35	<input type="button" value="Delete Item"/>
2	76912	SCOTCHCAST 1-STEP EX 12.5	3M COMPANY	<input checked="" type="checkbox"/>	1	EX	\$60.650	\$60.65	<input type="button" value="Delete Item"/>
3	7590758693	BINAURAL B TUSING FOR CARD II	3M COMPANY	<input checked="" type="checkbox"/>	2	EA	\$167.900	\$335.80	<input type="button" value="Delete Item"/>
4	82002	SCOTCHCAST 2" WHITE 10/EX	3M COMPANY	<input checked="" type="checkbox"/>	2	EX	\$144.000	\$288.00	<input type="button" value="Delete Item"/>
5	BDS29431	SVR INSUL N,300 28X1/2"	ABCD DEALERS INC	<input checked="" type="checkbox"/>	5	EX	\$199.750	\$998.75	<input type="button" value="Delete Item"/>
6	R0929486	PRRX1.0 III TRA FINE 500	SENECA MEDICAL NC	<input checked="" type="checkbox"/>	10	EX	\$10.000	\$100.00	<input type="button" value="Delete Item"/>
7	HUMALOG	HUMALOG		<input checked="" type="checkbox"/>				\$12.95	<input type="button" value="Delete Item"/>
8	WA21000	OTOSC		<input checked="" type="checkbox"/>				\$153.00	<input type="button" value="Delete Item"/>
9	WA22820	2.5v PD		<input checked="" type="checkbox"/>				\$17.25	<input type="button" value="Delete Item"/>

ORDER TOTALS

8 Items

\$1,371.75

9 Items

Previous Next

Please call with delivery date

Order Comments:

Windows Internet Explorer



Are you sure you want to send this order to your supplier?

Advanced Search

Enter your search criteria and click Search.

Prod Code:
Description:

Click here to Search Product History Only

If you wish to use a Custom Template choose one, or Please select your preferred order entry method:

Choose a template: 3M Products



Payment Method

Web Order #	Customer PO#	Ship to
000003	1201	UNIVERSITY MEDICAL CENTER NEW YORK CITY, NY 10016-1460

Total Merchandise: \$1,971.75

Tax Amount: \$0.00

Shipping/Handling: \$0.00

Total Order Amount: \$1,971.75

Please note that your order total includes estimated tax and shipping charges.

Please choose your Preferred Method of Payment

01 - NET 30

If you wish to pay by Credit Card, choose an existing Credit Card or enter information below.

Bill-To: UNIVERSITY MEDICAL CENTER
ACCOUNTS PAYABLE/TRAVEL
410 BROADWAY AVF
NEW YORK CITY NY 10016-1460

Credit Card:

Credit Card Type:

Credit Card Number:

Validation Code:

Name on card:

Expire Date:

Bill-To Address:

Bill-To Zipcode:



Payment Method

Web Order #	Customer PO#	Ship to
000003	1201	UNIVERSITY MEDICAL CENTER NEW YORK CITY, NY 10016-1460

Total Merchandise: \$1,971.75

Tax Amount: \$0.00

Shipping/Handling: \$0.00

Total Order Amount: \$1,971.75

Please note that your order total includes estimated tax and shipping charges.

Please choose your Preferred Method of Payment

01 - NET 30

If you wish to pay by Credit Card, choose an existing Credit Card or enter information below.

Bill-To: UNIVERSITY MEDICAL CENTER
ACCOUNTS PAYABLE/TRAVEL
410 BROADWAY AVF
NEW YORK CITY NY 10016-1460

Credit Card:

Credit Card Type:

Credit Card Number:

Validation Code:

Name on card:

Expire Date:

Bill-To Address:

Bill-To Zipcode:



Payment Method

Web Order #	Customer PO#	Ship to
000003	1201	UNIVERSITY MEDICAL CENTER NEW YORK CITY, NY 10016-1460

Total Merchandise: \$1,971.75

Tax Amount: \$0.00

Shipping/Handling: \$0.00

Total Order Amount: \$1,971.75

Please note that your order total includes estimated tax and shipping charges.

Please choose your Preferred Method of Payment

01 - NET 30

If you wish to pay by Credit Card, choose an existing Credit Card or enter information below.

Bill-To: UNIVERSITY MEDICAL CENTER
ACCOUNTS PAYABLE/TRAVEL
410 BROADWAY AVF
NEW YORK CITY NY 10016-1460

Credit Card:

Credit Card Type:

Credit Card Number:

Validation Code:

Name on card:

Expire Date:

Bill-To Address:

Bill-To Zipcode:

Order Confirmation for Web Order Number : 000063

Your order has been sent. Please print this confirmation for your records.
To print, select FILE and PRINT from your browser window.
Thank you for using our website.

Web Order #	Sold To	Ship To							
000063	UNIVERSITY MEDICAL CENTER ACCOUNTS PAYABLE/TRAVEL 400 BROADWAY AVE NEW YORK CITY, NY 10018-1480	UNIVERSITY MEDICAL CENTER ACCOUNTS PAYABLE/TRAVEL 400 BROADWAY AVE NEW YORK CITY, NY 10018-1480							
Required Date	12/03/21/06	U.S.A.							
Customer PO#	1201	Dept. No.	K12	Req. No.		Ordered By	Lauren T	Ship Method	01

Special Instructions:
Office hours 9AM to 12PM. Please deliver to side door.

Line No.	Product No.	Product Description	Manufacturer	ORD QTY	UM	Price	Fxt. Price
1	WA22320	2.5V POCKET OTOSCOPE	WELCH ALLYN	1	BX	\$17.250	\$17.25
2	E0329480	256X1/2 ULTRA FINE BUC	FRMFA MEDICAL INC	10	EA	\$10.000	\$100.00
3	7830785533	BINAURAL & TUBING FOR CARD I	3M COMPANY	2	EA	\$157.900	\$315.80
4	001205	ENG ULTRASOUND GEL 8 OZ	ABCO DEALERS INC	3	EA	\$8.400	\$25.20
5	HUMALOG	HUMALOG 10 ML INSULIN		1	EA	\$12.950	\$12.95
6	WA21000	OTOSCOPE 3.5V OPER W/SPEC	WELCH ALLYN	1	EA	\$158.000	\$158.00
7	78312	SCOTCHCAST 1-STR 3X12 5'	3M COMPANY	1	BX	\$62.650	\$62.65
8	R2002	SCOTCHCAST 2" WHITE 10.0R	3M COMPANY	2	RX	\$144.000	\$288.00
9	E0329431	5YR INSULIN 300 28X1/2"	ABCO DEALERS INC	5	BX	\$198.750	\$993.75

ORDER TOTAL S					
8 Items					
Total Merchandise: \$1,971.75					
Tax Amount: \$0.00					

Web Order #	Sold To	Ship To
000063	UNIVERSITY MEDICAL CENTER ACCOUNTS PAYABLE/TRAVEL 400 BROADWAY AVE NEW YORK CITY, NY 10018-1460	UNIVERSITY MEDICAL CENTER ACCOUNTS PAYABLE/TRAVEL 400 BROADWAY AVE NEW YORK CITY, NY 10018-1460
Required Date	12/05/2008	U.S.A.

Customer PO#	Dept No.	Req. No.	Ordered By	Ship Method
12C1	K12		Lauren T	01

Special Instructions:

Office hours 9AM to 12PM. Please deliver to side door.

Line No.	Product No.	Product Description	Manufacturer	ORD QTY	UM	Price	Ext. Price
1	WA22820	2.5V POCKET OTOSCOPE	WELCH ALLYN	1	BX	\$17.250	\$17.25
2	BD328466	290X1/2 ULTRA FINE .600	GENECA MEDICAL INC.	10	BX	\$10.000	\$100.00
3	7000703503	DINAJITAL & TUDINO TOP CARD I	3M COMPANY	2	EA	\$107.000	\$214.00
4	001205	EKG ULTRASOUND GE. 8 02	ASCO DEALERS INC.	3	EA	\$9.450	\$28.35
5	HUMALOG	HUMALOG 10 M/L INSULIN		1	EA	\$12.950	\$12.95
6	WA21000	OTOSCOPE 3.5V OPER W/SPEC	WELCH ALLYN	1	EA	\$158.000	\$158.00
7	78312	SCOTCHCAST 1-STEP 3X12 B/	3M COMPANY	1	BX	\$62.650	\$62.65
8	62012	SCOTCHCAST 2-STEP WHITE 10 BX	3M COMPANY	2	BX	\$144.000	\$288.00
9	BD328431	SYR INSULIN 300 29X1/2"	ASCO DEALERS INC.	5	BX	\$198.750	\$993.75

ORDER TOTALS

8 Items	Total Merchandise:	\$1,971.75
	Tax Amount:	\$0.00
	Shipping/Handling:	\$0.00
	Total Order Amount:	\$1,971.75

Please note that your order total includes estimated tax and shipping charges.

Order Comments:

Please call with delivery date

Your Web Confirmation Number is: 000063
Please Print this confirmation for your records.
TO PRINT:
Select FILE and PRINT from your browser menu OR
click the printer icon OR press CTRL and P at the same time.
After printing click here to continue



Thank You

Order Confirmation for Web Order Number : 000063

Your order has been sent. Please print this confirmation for your records.
To print select FILE and PRINT from your browser window.
Thank you for using our website.

Web Order #	Sold To	Ship To
00000	UNIVERSITY MEDICAL CENTER ACCOUNTS PAYABLE TRUST 60 BARCLAY ST NEW YORK NY 10014-6600	UNIVERSITY MEDICAL CENTER ACCOUNTS PAYABLE TRUST 60 BARCLAY ST NEW YORK NY 10014-6600
Required Date	U.S.	U.S.
10/2/2005		
Customer PO#	Dept. No.	Web. No.
1001	102	
		Ordered By
		SHIPMNT
		Ship Method
		0

Special Instructions:
Office Hours 9AM to 12PM. Please Call us to order.

Line No.	Product No.	Product Description	Manufacturer	QTY	UNIT	Price	Ext. Price
1	102000	102 PROBE OTOSCOPE	VEEDOLLYN	1	EA	\$1,100	\$1,100
2	0020400	300M 1.000A FINE 300	3M CO/RENT	10	EA	\$1,000	\$10,000
3	10070000	SHOULDER TURNING FOR CARD II	3M CO/RENT	2	EA	\$1,700	\$3,400
4	01100	200 ULTRASONIC 200 100	3M CO/RENT	2	EA	\$1,000	\$2,000
5	400000	400000 1000 1000	3M CO/RENT	1	EA	\$1,000	\$1,000
6	102000	102000 1000 1000	VEEDOLLYN	1	EA	\$1,000	\$1,000
7	1010	1010 1000 1000	3M CO/RENT	1	EA	\$1,000	\$1,000
8	0001	0001 1000 1000	3M CO/RENT	2	EA	\$1,000	\$2,000
9	000001	000001 1000 1000	3M CO/RENT	2	EA	\$1,000	\$2,000

ORDER TOTALS		
Items		Total Merchandise: \$1,710
		Tax Amount: \$0.00
		Shipping/Handling: \$0.00
		Total Order Amount: \$1,710

Please note that your order total includes estimated tax and shipping charges.

Order Comments:
Please call 1-800-845-5454

Your Web Confirmation Number is: 00000
Please Print this confirmation for your records.
TO PRINT:
Select FILE and PRINT from your browser menu OR
click the print icon OR press CTRL and P at the same time.
After printing click here to continue.

Our company relies on your feedback to continually improve our website's services and information. Please fill out this form or give us your comments in the box below.

EASE OF USE -- Ordering Methods:

Please rate the ease of use for the following order entry methods on RemoteNet. (1 indicates very difficult, 5 indicates very simple)

Custom Lists:	<input type="radio"/> 1	<input type="radio"/> 2	<input type="radio"/> 3	<input type="radio"/> 4	<input type="radio"/> 5
Product Search:	<input type="radio"/> 1	<input type="radio"/> 2	<input type="radio"/> 3	<input type="radio"/> 4	<input type="radio"/> 5
Quick Order:	<input type="radio"/> 1	<input type="radio"/> 2	<input type="radio"/> 3	<input type="radio"/> 4	<input type="radio"/> 5
Purchase History:	<input type="radio"/> 1	<input type="radio"/> 2	<input type="radio"/> 3	<input type="radio"/> 4	<input type="radio"/> 5

OVERALL SITE FUNCTIONALITY:

(1 indicates unsatisfactory, 5 indicates above expectations)

My overall satisfaction with the site is: 1 2 3 4 5

SPEED OF SITE:

(1 indicates unsatisfactory, 5 indicates above expectations)

Site Speed: 1 2 3 4 5
 Internet connection: Please Choose a connection ▼

USEFULNESS OF WEB SITE:

(1 indicates disagree, 5 indicates agree)

Helpful in managing my practice/business:	<input type="radio"/> 1	<input type="radio"/> 2	<input type="radio"/> 3	<input type="radio"/> 4	<input type="radio"/> 5
Provides useful information:	<input type="radio"/> 1	<input type="radio"/> 2	<input type="radio"/> 3	<input type="radio"/> 4	<input type="radio"/> 5
Better than using individual vendor sites:	<input type="radio"/> 1	<input type="radio"/> 2	<input type="radio"/> 3	<input type="radio"/> 4	<input type="radio"/> 5

ADDITIONAL INFORMATION:

What additional information would be helpful for you to be able to access via RemoteNet?

How many vendors do you currently purchase Medical/Pharmaceutical products from?

Would you like to purchase from additional vendors at this site? YES NO

If yes, who?

Vendor Name	Contact Name	Phone Number



Welcome to RemoteNet

On-line Customer Information System from The Systems House, Inc.

Welcome to Online Ordering	
PLEASE LOG IN:	
Please enter your Web Customer ID:	<input type="text" value="SLS"/>
Please enter your Password:	<input type="password" value="****"/>
<input type="button" value="Login"/>	<input type="button" value="Clear Form"/>

FORGOT YOUR WEB CUSTOMER NUMBER?
 Enter the account email address* below and we will send it to you.

*Please note: To receive web customer login information, the email address entered here MUST match the email address on file for your account.
 Login Problems? Email us!
weblogin@tshinc.com

NEW TO WEB ORDERING?

For a Demo Login use the following codes:
Click Here to Browse our Products

For Order Entry Demo enter
 Web Customer ID: **DEMO**
 Password: **DEMO**

For Salesman Demo enter
 Web Customer ID: **SLS**
 Password: **SLS**

Not a web customer yet? Email us



NOTE: This system requires Microsoft Internet Explorer 5.0 or greater. To download the latest version of IE5, please go to Microsoft.com


Welcome Mr. Sales Demo

To place a new order please fill in order information below :

Required information is highlighted

Web Order Number: 000095

Account #	Sold to	Ship to
ELS	UNIVERSITY MEDICAL CENTER ACCOUNTS PAYABLE/ TRAVEL 400 BROADWAY AVE NEW YORK CITY, NY 10018-1400 U.S.A.	PEDIATRIC CARDIOLOGY 1236 165TH AVE FAX: 353-5447 NEW YORK NY 10017 000


Required Date: 

Dept No:

Customer PO:


Req. No:

Ordered By:

Ship Method: 

Special Instructions:

If you wish to use a Custom Template choose one or
Please select your preferred order entry method:

Choose a template: 

Inventory Inquiry

[About Online Ordering](#)
[Change Password](#)
[Place an Order](#)
[Inquiries](#)
[Help](#)
[Contact Us](#)
[Home](#)

- Inventory Inquiry
- Customer Price Inquiry
- Order Inquiry
- Purchasing History
- Accounts Receivable
- Backorders
- Product Contract

Please Enter a valid Product Code and click on

Product Code		Product Description					
<input type="text"/>							
Sell IIM	Stock IIM		Rox QTY	Case QTY	Substitute Item		
Whse	Avail	On Order	Next PO	Avg Usage	Usage MTD	Usage YTD	Purch \$ YTD

[Return to Previous Page](#)

Inventory Inquiry

Please Enter a valid Product Code and click on "Submit"

Product Code		Product Description					
BD025197		16 OX1IN PRECISION SLIDE NON SAFETY PRODUCT					
Sell UOM	Stock UOM	Purch UOM	Box QTY	Case QTY	Substitute Item		
DX/1	DX/1	CS/10	1	10			
Whse	Avail	On Order	Next PO	Avg. Usage	Usage MTD	Usage YTD	Purch \$ YTD
07	18	0		0	0	0	\$0.00

[Return to Previous Page](#)

Inventory Inquiry

Please Enter a valid Product Code and click on "Submit"

Product Code		Product Description					
BD025197		16 OX1IN PRECISION SLIDE NON SAFETY PRODUCT					
Sell UOM	Stock UOM	Purch UOM	Box QTY	Case QTY	Substitute Item		
DX/1	DX/1	CS/10	1	10			
Whse	Avail	On Order	Next PO	Avg. Usage	Usage MTD	Usage YTD	Purch \$ YTD
07	18	0		0	0	0	\$0.00

[Return to Previous Page](#)

Customer/Item Price Inquiry

Customer

UNIVERSITY MEDICAL CENTER
 ACCOUNTS PAYABLE/TRAFFIC
 400 BROADWAY AVE
 NEW YORK CITY NY 10018-1498

Phone 212-777-1111
Salesman 001 SY FERTIG
Cred. Limit \$50,000
Cred. Hold N

Please Enter a valid Product Code and click on "Submit"

Product Code	Product Description	Manufacturer					
ED305197	0.6X11X11X PRECISION GLIDE WORK SAFETY PRODUCT	MEDICAL PRODUCTS INC					
Discontinued	Retail Price	Special Price	Contract Price				
N	10.150						
Sell UM	Stock UM	Purch UM	Box QTY	Case QTY	Substitute Item		
\$10.150 BX	BX/1	CS/10	1	10			
Whse	Location	On Hand	Avail	Committed	On Order	Due Date	In Pick
001	050CA	18	18	0	0		0

Note:

An asterisk next to the Retail Price value indicates that price breaks are available for this product in the Product Master file.
 An asterisk next to the Special Price value indicates that price breaks are available for this product in the Contract Price file.

Customer/Item Price Inquiry

Customer

UNIVERSITY MEDICAL CENTER
 ACCOUNTS PAYABLE/TRAFFIC
 400 BROADWAY AVE
 NEW YORK CITY NY 10018-1498

Phone 212-777-1111
Salesman 001 SY FERTIG
Cred. Limit \$50,000
Cred. Hold N

Please Enter a valid Product Code and click on "Submit"

Product Code	Product Description	Manufacturer					
ED305197	0.6X11X11X PRECISION GLIDE WORK SAFETY PRODUCT	MEDICAL PRODUCTS INC					
Discontinued	Retail Price	Special Price	Contract Price				
N	10.150						
Sell UM	Stock UM	Purch UM	Box QTY	Case QTY	Substitute Item		
\$10.150 BX	BX/1	CS/10	1	10			
Whse	Location	On Hand	Avail	Committed	On Order	Due Date	In Pick
001	050CA	18	18	0	0		0

Note:

An asterisk next to the Retail Price value indicates that price breaks are available for this product in the Product Master file.
 An asterisk next to the Special Price value indicates that price breaks are available for this product in the Contract Price file.

Customer/Item Price Inquiry

Customer

UNIVERSITY MEDICAL CENTER
 ACCOUNTS PAYABLE/TRAFFIC
 400 BROADWAY AVE
 NEW YORK CITY NY 10018-1498

Phone 212-777-1111
Salesman 001 SY FERTIG
Cred. Limit \$50,000
Cred. Hold N

Please Enter a valid Product Code and click on "Submit"

Product Code	Product Description	Manufacturer					
ED305197	0.6X11X11X PRECISION GLIDE WORK SAFETY PRODUCT	MEDICAL PRODUCTS INC					
Discontinued	Retail Price	Special Price	Contract Price				
N	10.150						
Sell UM	Stock UM	Purch UM	Box QTY	Case QTY	Substitute Item		
\$10.150 BX	BX/1	CS/10	1	10			
Whse	Location	On Hand	Avail	Committed	On Order	Due Date	In Pick
001	050CA	18	18	0	0		0

Note:

An asterisk next to the Retail Price value indicates that price breaks are available for this product in the Product Master file.
 An asterisk next to the Special Price value indicates that price breaks are available for this product in the Contract Price file.

Customer/Item Price Inquiry - Windows Internet Explorer

http://hosting.tshinc.com/cgi-bin/olecgi.exe/login012

File Edit View Favorites Tools Help

Customer/Item Price Inquiry - Price Breaks - Windows Internet Explorer

http://hosting.tshinc.com/cgi-bin/olecgi.exe/qtybreaks012?orderno=000107

Product Code	Product Description
BD305197	18 GX11IN PRECISIONGLIDE NON SAFETY PRODUCT

Line#	Quantity	Price	Unit Meas	Disc%	Comm%
1	10	10.000	BX		
2	25	9.950	BX		
3	9999999	9.900	BX		

Above is the price break information for this product.

Order#	Total Amount
000107	\$0.00

Price Inquiry

Customer

UNIVERSITY MEDICAL CENT
ACCOUNTS PAYABLE/TRAVI
400 BROADWAY AVE
NEW YORK CITY NY 10018-1

Please Enter a valid

Product Code

BD305197

Discontinue

N

Sell UM

\$10.000 BX

Whse

001

Loc

0500A

Done

Internet

100%

Note:
An asterisk next to the **Retail Price** value indicates that price breaks are available for this product in the Product Master file.
An asterisk next to the **Special Price** value indicates that price breaks are available for this product in the Contract Price file.



About Online Ordering

Customer
UNIVERSITY MEDICAL CENT
ACCOUNTS PAYABLE/TRAVI
400 BROADWAY AVE
NEW YORK CITY NY 10016-1

Please Enter a valid

Product Code

25-94

Discontinue

N

Sell UM

\$100,500 CS

Whse **Loc**

001 1400C

Product Code	Product Description
25-94	GLOVE NS SYN MED 100/BX VINYL POWDER FREE

Line#	Date	Note	Expires	Whse
1	03/10/09	Item will be expiring in July 2010		001

Above are the notes for this product.

Close

Order#	Total Amount
000107	\$0.00

Price Inquiry

PRODUCTS

Contract Price

Substitute Item

Date In Pick

Note:
An asterisk next to the **Retail Price** value indicates that price breaks are available for this product in the Product Master file.
An asterisk next to the **Special Price** value indicates that price breaks are available for this product in the Contract Price file.

Submit Reset

View Price Breaks

View Product Notes

Return to Previous Page

Customer: LMC
Company: JMC
Name: UNIVERSITY MEDICAL CENTER
Address 1: ACCOUNTS PAYABLE/TRAVEL
Address 2: 400 BROADWAY AVE
City, State, Zip: NEW YORK CITY, NY 10016-1450

Contact: JM STOVER
Phone: 212-555-1212
Fax: 212-617-1111
E-Mail: sjf@shinc.com
Salesrep: SY FERTIG

15 orders have been placed for this account.

If you don't see the desired Web Order#, Click here to view Orders on Hold.

To see order detail, Click on the Web Order# below, or enter a Web Order # (6 digit) or Co#Order# (3 digit) or CustomerPO# below and click GO.

Line No.	Order#-Rel#	Web Order#	Cust. PO#	Dept. #	Order Date	Ship Date	Rel S Amt.	Status
1	01140220		400006048		08/21/08		\$11,485.25	InProcess
2	01140587		400005947		08/23/08		\$401.80	InProcess
3	01140587-001		0		08/23/08	10/05/08	\$128.60	InProcess
4	01140587-002		0		08/23/08	10/05/08	\$128.00	InProcess
5	01141305		400072825		10/19/08		\$21.00	InProcess
6	01141480		400088918		10/21/08		\$78.96	InProcess
7	01141515		400072825		10/25/08		\$429.10	InProcess
8	01141515-001		400072825		10/25/08	10/26/08	\$225.60	InProcess
9	01141555		40002		10/27/08		\$1,455.00	InProcess
10	01141555-001		400072898		10/27/08	10/31/08	\$1,455.00	InProcess

15 Items 2 Pages

Order Status Codes: On Hold = on Credit, Manual, or Price Hold; Pending = Order is pending Administrative approval

Sort By:

Items per page:

Previous 1 2 Next

Customer: LMC
Company: JMC
Name: UNIVERSITY MEDICAL CENTER
Address 1: ACCOUNTS PAYABLE/TRAVEL
Address 2: 400 BROADWAY AVE
City, State, Zip: NEW YORK CITY, NY 10016-1450

Contact: JM STOVER
Phone: 212-555-1212
Fax: 212-617-1111
E-Mail: sjf@shinc.com
Salesrep: SY FERTIG

15 orders have been placed for this account.

If you don't see the desired Web Order#, Click here to view Orders on Hold.

To see order detail, Click on the Web Order# below, or enter a Web Order # (6 digit) or Co#Order# (3 digit) or CustomerPO# below and click GO.

Line No.	Order#-Rel#	Web Order#	Cust. PO#	Dept. #	Order Date	Ship Date	Rel S Amt.	Status
1	01140220		400006048		09/21/08		\$11,485.25	InProcess
2	01140567		400005947		09/23/08		\$401.80	InProcess
3	01140567-001		0		09/23/08	10/05/08	\$129.60	InProcess
4	01140567-002		0		09/23/08	10/05/08	\$129.00	InProcess
5	01141305		400072825		10/19/08		\$21.00	InProcess
6	01141480		400088919		10/21/08		\$79.96	InProcess
7	01141515		400072825		10/25/08		\$429.10	InProcess
8	01141515-001		400072825		10/25/08	10/26/08	\$225.60	InProcess
9	01141555		40002		10/27/08		\$1,455.00	InProcess
10	01141555-001		400072595		10/27/08	10/31/08	\$1,455.00	InProcess

15 Items 2 Pages

Order Status Codes: On Hold = on Credit, Manual, or Price Hold; Pending = Order is pending Administrative approval

Sort By:

Items per page:

Previous 1 2 Next

Customer: LMC
Company: JMC
Name: UNIVERSITY MEDICAL CENTER
Address 1: ACCOUNTS PAYABLE/TRAVEL
Address 2: 400 BROADWAY AVE
City, State, Zip: NEW YORK CITY, NY 10016-1450

Contact: JM STOVER
Phone: 212-555-1212
Fax: 212-617-1111
E-Mail: sjf@shinc.com
Salesrep: SY FERTIG

15 orders have been placed for this account.

If you don't see the desired Web Order#, Click here to view Orders on Hold.

To see order detail, Click on the Web Order# below, or enter a Web Order # (6 digit) or Co#Order# (3 digit) or CustomerPO# below and click GO.

Line No.	Order#-Rel#	Web Order#	Cust. PO#	Dept. #	Order Date	Ship Date	Rel S Amt.	Status
1	01140220		400006048		09/21/08		\$11,485.25	InProcess
2	01140267		400006047		09/23/08		\$401.80	InProcess
3	01140567-001		0		09/23/08	10/05/08	\$129.60	InProcess
4	01140567-002		0		09/23/08	10/05/08	\$129.00	InProcess
5	01141305		400072825		10/19/08		\$21.00	InProcess
6	01141480		400088019		10/21/08		\$79.96	InProcess
7	01141515		400072825		10/25/08		\$429.10	InProcess
8	01141515-001		400072825		10/25/08	10/26/08	\$225.60	InProcess
9	01141555		40002		10/27/08		\$1,455.00	InProcess
10	01141555-001		400072898		10/27/08	10/31/08	\$1,455.00	InProcess

15 Items 2 Pages

Order Status Codes: On Hold = on Credit, Manual, or Price Hold; Pending = Order is pending Administrative approval

Sort By:

Items per page:

Previous 1 2 Next

[Return to Previous Page](#)



Order#	Total Amount
000077	\$141.55

Shipping Inquiry

[About Online Ordering](#)
[Change Password](#)
[Place an Order](#)
[Inquiries](#)
[Help](#)
[Contact Us](#)
[Home](#)

Customer #	Sold To	Ship To
UMC	UNIVERSITY MEDICAL CENTER ACCOUNTS PAYABLE/TRAVEL 400 BROADWAY AVE	UNIVERSITY OF IOWA COLLEGE OF DENTISTRY
Salesrep	NEW YORK CITY, NY 10018-1460	IOWA CITY, IA 52242-1460
SY FERTIG	U.S.A.	

Web Order#	Order Date	Req. Date	Req. No.	Cust PO	Ordered By	Terms
	10/20/08	10/20/08		4000072823		NET 30

Order#	Invoice#	Invoice Date	Ship Date	Ship Method
01141515407		10/21/08	10/20/08	UPS

Special Instructions:

Release detail for your order:

Line No.	Product No.	Product Description	Ord Qty	Ord UM	Ship Qty	BlkOrd Qty	InPick Qty	Price	Prc UM	Prc Qty	Ext. Price	Est B/O Ship Date
1	36700	APP. 1 PIST COTTON T.F. 16apack 100 BX WOODEN STICK 16apack	10	BX		0	10	\$4.260	BX	10	\$42.60	
2	4844	DAN-AID GICER 1X2" 100/D	24	DX		0	24	\$4.540	DX	24	\$108.96	
3	618637	SYRINGE ONLY 60L	30	BX		19	11	\$6.740	BX	11	\$74.14	

TOTALS

Freight: \$0.00
 Tax: \$0.00
 Total: \$225.60

3 Items

1 Page

Sort By: Product No.

Items per page: 10

Previous 1 Next

Note: To track your package please click on the tracking number below.



Order#	Total Amount
000077	\$141.55

Shipping Inquiry

[About Online Ordering](#)
[Change Password](#)
[Place an Order](#)
[Inquiries](#)
[Help](#)
[Contact Us](#)
[Home](#)

Customer #	Sold To	Ship To
UMC	UNIVERSITY MEDICAL CENTER ACCOUNTS PAYABLE/TRAVEL 400 BROADWAY AVE	UNIVERSITY OF IOWA COLLEGE OF DENTISTRY
Salesrep	NEW YORK CITY, NY 10018-1460	IOWA CITY, IA 52242-1460
SY FERTIG	U.S.A.	

Web Order#	Order Date	Req. Date	Req. No.	Cust PO	Ordered By	Terms
	10/20/08	10/20/08		4000072823		NET 30

Order#	Invoice#	Invoice Date	Ship Date	Ship Method
01141515407		10/21/08	10/20/08	UPS

Special Instructions:

Release detail for your order:

Line No.	Product No.	Product Description	Ord Qty	Ord UM	Ship Qty	BlkOrd Qty	InPick Qty	Price	Prc UM	Prc Qty	Ext. Price	Est B/O Ship Date
1	36700	APP. 1 PIST COTTON T.F. 16apack 100 BX WOODEN STICK 16apack	10	BX		0	10	\$4.260	BX	10	\$42.60	
2	4844	DAN-AID GICER 1X2" 100/D	24	DX		0	24	\$4.540	DX	24	\$108.96	
3	618637	SYRINGE ONLY 60L	30	BX		19	11	\$6.740	BX	30	\$202.20	

TOTALS

Freight: \$0.00
 Tax: \$0.00
 Total: \$225.60

3 Items

1 Page

Sort By: Product No.

Items per page: 10

Previous 1 Next

Note: To track your package please click on the tracking number below.



Order#	Total Amount
000077	\$141.55

Shipping Inquiry

[About Online Ordering](#)
[Change Password](#)
[Place an Order](#)
[Inquiries](#)
[Help](#)
[Contact Us](#)
[Home](#)

Customer #	Sold To	Ship To
UMC	UNIVERSITY MEDICAL CENTER ACCOUNTS PAYABLE/TRAVEL 400 BROADWAY AVE	UNIVERSITY OF IOWA COLLEGE OF DENTISTRY
Salesrep	NEW YORK CITY, NY 10018-1460	IOWA CITY, IA 52242-1480
SY FERTIG	U.S.A.	

Web Order#	Order Date	Req. Date	Req. No.	Cust PO	Ordered By	Terms
	10/20/08	10/20/08		4000072823		NET 30

Order#	Invoice#	Invoice Date	Ship Date	Ship Method
01141515407		10/21/08	10/20/08	UPS

Special Instructions:

Release detail for your order:

Line No.	Product No.	Product Description	Ord Qty	Ord UM	Ship Qty	BlkOrd Qty	InPick Qty	Price	Prc UM	Prc Qty	Ext. Price	Est B/O Ship Date
1	36700	APP. 1 PIST COTTON T.F. 16apex 100 BX WOODEN STICK 16apex/S	10	BX		0	10	\$4.260	BX	10	\$42.60	
2	4844	DAN-AID GICER 1X2" 100/D	24	DX		0	24	\$4.540	DX	24	\$108.96	
3	618637	SPRINGE ONLY 60L	30	BX		19	11	\$6.740	BX	30	\$202.20	

TOTALS

Freight: \$0.00
 Tax: \$0.00
 Total: \$225.60

3 Items

1 Page

Sort By: Product No.

Items per page: 10

Previous 1 Next

Note: To track your package please click on the tracking number below.



Order#	Total Amount
000077	\$141.55

Shipping Inquiry

[About Online Ordering](#)
[Change Password](#)
[Place an Order](#)
[Inquiries](#)
[Help](#)
[Contact Us](#)
[Home](#)

Customer #	Sold To	Ship To
UMC	UNIVERSITY MEDICAL CENTER ACCOUNTS PAYABLE/TRAVEL 400 BROADWAY AVE	UNIVERSITY OF IOWA COLLEGE OF DENTISTRY
Salesrep	NEW YORK CITY, NY 10018-1460	IOWA CITY, IA 52242-1460
SY FERTIG	U.S.A.	

Web Order#	Order Date	Req. Date	Req. No.	Cust PO	Ordered By	Terms
	10/20/08	10/20/08		4000072823		NET 30

Order#	Invoice#	Invoice Date	Ship Date	Ship Method
01141515407		10/21/08	10/20/08	UPS

Special Instructions:

Release detail for your order:

Line No.	Product No.	Product Description	Ord Qty	Ord UM	Ship Qty	BlkOrd Qty	InPick Qty	Price	Prc UM	Prc Qty	Ext. Price	Est B/O Ship Date
1	36700	APP. 1 PIST COTTON T.F. 16apack 100 BX WOODEN STICK 16apack	10	BX		0	10	\$4.260	BX	10	\$42.60	
2	4844	DAN-AID GICER 1X2" 100/D	24	DX		0	24	\$4.540	DX	24	\$108.96	
3	618637	SPRINGE ONLY 60L	30	BX		19	11	\$6.740	BX	30	\$202.20	

TOTALS

Freight: \$0.00
 Tax: \$0.00
 Total: \$225.60

3 Items

1 Page

Sort By: Product No.

Items per page: 10

Previous 1 Next

Note: To track your package please click on the tracking number below.

Web Order#	Order Date	Req. Date	Req. No.	Cust PO	Ordered By	Terms
	10/25/08	10/25/08		40000/2525		Net 30

Order#	Invoice#	Invoice Date	Ship Date	Ship Method
01141815-00		02/27/09	10/25/08	UPS

Special Instructions:

Release detail for your order:

Line No.	Product No.	Product Description	Ord Qty	Ord UM	Ship Qty	BlkOrd Qty	InPick Qty	Price	Prc UM	Prc Qty	Ext Price	Est B/O Ship Date
1	267L0	APPLI'D STICUTION T-P 15apcs 100 BX WOODEN STICK 15apcs	10	BX		0	10	\$4.200	BX	1	\$42.00	
2	4644	BAND-AID OILZER 1X2P 100/D	24	DX		0	24	\$4.540	DX	1	\$108.96	
3	618R37	SPR NGF ONLY 800	50	RX		0	11	\$6.740	RX	1	\$74.14	

TOTALS	
Freight:	\$0.00
Tax:	\$0.00
Total:	\$225.00

3 Items 1 Page Previous 1 Next

Sort by: PRODUCTS GO

Items per page: 10 GO

Note: To track your package please click on the tracking number below.

Tracking Information:

Carton #	Tracking #	Carton Weight	Ship Charge	Ship Date
No Tracking Information on File				
TOTALS		0.00 lbs.	\$0.00	

[Return to Previous Page](#)

Web Order#	Order Date	Req. Date	Req. No.	Cust PO	Ordered By	Terms
	10/22/08	10/26/08		40000/2525		Net 30

Order#
01141015-00

Special Instructions:

Release detail for your order:

Line No.	Product No.	Product Description
1	267L0	APPLICATOR GUN 1/8" 15000
2	4644	DAWN-AID GLIZER 1X27-100/D
3	618R37	SPRAYER ONLY 800

TOTALS

3 Items 1 Page

Sort by: PRODUCT #

Items per page: 10 GO

Note: To track your package please click on the tracking

Tracking Information:

Carton #	Tracking #

TOTALS

UPS Package Tracking - Microsoft Internet Explorer

Address: http://wwwapps.ups.com/WebTracking/processRequest

UPS United States

Shipping Tracking Support Business Solutions

Log In User ID: Password: Register

Track by Tracking Number

View Details

Status: Delivered
Delivered on: Apr 1, 2005 9:52 A.M.
Signed by: RUSTE IO
Location: MAIL ROOM
Delivered to: NEW YORK, NY, US
Shipped or Billed on: Apr 1, 2005

Tracking Number: 1Z 100 705 00 4152 944 1
Service Type: GROUND
Weight: 2.0 Lbs

Package Progress:

Date/Time	Location	Activity
Apr 4, 2005 9:52 A.M.	NEW YORK, NY, US	DELIVERY
Apr 2, 2005 4:15 A.M.	NEW YORK, NY, US	OUT FOR DELIVERY
Apr 2, 2005 1:28 A.M.	NEW YORK, NY, US	ARRIVAL SCAN
Apr 2, 2005 12:41 A.M.	MASPETH, NY, US	DEPARTURE SCAN
Apr 1, 2005 8:08 P.M.	MASPETH, NY, US	ORIGIN SCAN
Apr 1, 2005 1:12 P.M.	US	BILLING INFORMATION RECEIVED

Tracking results provided by LPS: Apr 11, 2005 6:36 P.M. Eastern Time (USA)

3	49834-0239-07	Amoxic Clv Pot 875/125mg TB 20 PAR	6 EA	6	0	\$12.50	EA	1	\$75.00	02/21/08
4	49034-0404-01	Metoprol Succ CR 25g TD 100 PAR	6 CA	6	0	\$35.00	CA	1	\$210.00	05/20/08
5	49834-0405-01	Metoprol Succ ER 50mg TB 100 PAR	8 EA	8	0	\$36.00	EA	1	\$288.00	05/20/08
6	49834-0406-01	Metoprol Succ ER 100mg TB 100 FAR	2 EA	2	0	\$46.00	EA	1	\$92.00	05/20/08
7	55111-0194-05	Fexofenadine HCL 180mg								

TOTALS

7 Items 1 Page

Sort By: Product No.

Items per page: 10

Note: To track your package please click on the tracking information:

Tracking Information:

Carton #	Tracking #
1	1Z58V6460248395061

TOTALS

1

Note: To view your pedigree please click on the pedigree information:

Pedigree Information:

Pedigree #
0000001464
0000001465
0000001515
0000001552
0000001560
0000001575

http://timeshare2.tshinc.com/hygentestreports/RN_PED_PRT_000075_00000001464....

http://timeshare2.tshinc.com/hygentestreports/RN_PED_PRT_000075_00000001464.pdf

71%

HyGen Pharmaceuticals, Inc. (Wholesaler's Name)
PRESCRIPTION (LEGEND) DRUG PEDIGREE 00000001464
 History of Drug Sales and Distributions

Legend Drug Name, Strength, Dosage Form, Container Size: **Metoprol Succ ER 50mg TB**

This is a repackaged drug (requires repackager's pedigree information and authentication of repackager's pedigree)

NDC: _____

Lot Number	Quantity	Unique Serial #
PB0148	36	

Reference* Number: 020535
 Document Type: Invoice
 Reference* Date: 04/29/08
(related to the sale by the wholesaler identified above)

OWNERSHIP HISTORY

Manufacturer's Name: _____
 Manufacturer's information for authentication: _____

1. Wholesaler that purchased from the MANUFACTURER or a REPACKAGER (which requires authentication)

Name: Jackson Medical Pharmacy Address: Daniel Wang SAN JOSE CA 95116 Date Purchased & Ref*: _____ Print Name of Recipient: _____ Signature of Recipient: _____ Name of Authenticator: _____ Signature of Authenticator: _____ To authenticate a subsequent transaction, contact: Name: _____ Telephone number: _____ Email Address: _____	Name: Jackson Medical Pharmacy Address: Daniel Wang SAN JOSE CA 95116 Date Received & Ref*: _____ Print Name of Recipient: _____ Signature of Recipient: _____ Name of Authenticator: _____ Signature of Authenticator: _____ To authenticate a subsequent transaction, contact: Name: _____ Telephone number: _____ Email Address: _____
---	--

2. #1 Above SOLD TO:

Name: HyGen Pharmaceuticals, Inc. Address: 1940 124th Avenue NE BELLEVUE WA 98005 Date Purchased & Ref*: _____ Print Name of Recipient: _____	SHIPPED TO: Name: HyGen Pharmaceuticals, Inc. Address: 1940 124th Avenue NE BELLEVUE WA 98005 Date Received & Ref*: _____ Print Name of Recipient: _____
---	---

8.5 x 11 in

1 of 2

Done Internet 100%



Purchasing History

Customer #	Salesrep	Customer Name
UMC	BY FERTIG	UNIVERSITY MEDICAL CENTER NEW YORK CITY, NY 10016-1480

Sort By: [Click here to print customer purchasing history or export to Excel.](#)

Items per page: [Click here to print ship-to purchasing history or export to Excel.](#)

Your recent product usage is as follows:

Click on any product description for additional product information.

Product No	Product Description	Monthly Usage						Totl Avg	Sell YTD	UM	Last Price	Last UM	Total Expend
		Jul	Aug	Sep	Oct	Nov	Dec						
052122	GAUZE SPONGE NS 3X3 12PLY 200/PKG	0	500	0	0	0	0	53	3500	PK	\$4.400	PK	\$1,540.00
4882	EMESIS BASIN 9" 50002 IVORY	750	0	0	0	0	0	125	1250	EA	\$0.118	EA	\$147.50
R-5	CLIP, PAPER 902 100/PK 50	38	152	0	0	0	0	33	600	PK	\$2.550	PK	\$1,290.00
SM103	GLOVE FF NS MED UM SMOOTH 1000/CS	0	50	0	0	0	0	8	375	CS	\$39.800	CS	\$1,481.25
052113	GAUZE SPONGE NS 2X2 12PLY 200/PKG	120	0	0	0	0	0	20	360	PK	\$1.600	PK	\$540.00
052123	GAUZE SPONGE NS 4X4 12PLY 200/PKG	120	0	0	0	0	0	20	340	PK	\$5.260	PK	\$1,788.40
1222-6N	AUTOCCLAVE TAPE 3/4"STEAM 50YD/ROLL	48	48	0	0	0	0	16	310	RL	\$9.200	RL	\$692.00
567401	TOWEL PROF 13X15 3PLY FB POLY BACKED 500/CS	0	50	0	0	0	0	8	255	CS	\$17.400	CS	\$4,505.75
SM104	GLOVE FF NS LARGE SMOOTH 1000/CS	0	0	0	0	0	0	0	250	CS	\$39.800	CS	\$9,975.00
SM102	GLOVE FF NS SMALL SMOOTH 1000/CS	25	30	0	0	0	0	9	240	CS	\$39.800	CS	\$9,480.00
30200	APPL 0" NS COTTON TIP 1000/BX	40	0	0	0	0	0	7	130	BX	\$5.200	BX	\$607.00
1222-1N	AUTOCCLAVE TAPE 1" STEAM 60YD/ROLL	50	0	0	0	0	0	0	120	RL	\$4.000	RL	\$675.00
505762	OVR ONLY 3500 LIL 30/DX CAN USE W/SHO/E SAFETY PTD	50	0	0	0	0	0	10	120	DX	\$14.000	DX	\$1,075.40
032660	KERLIX TYPE BANDAGE NS 4 1/2"X1.1YD	100	0	0	0	0	0	17	100	EA	\$1.760	EA	\$176.00
33-34	B-CPSY PUNCH 4MM DISP	0	0	0	0	0	0	0	100	EA	\$1.840	EA	\$184.00
NS78605-L	SCRUB PANTS,CEIL, BLUE M	0	0	0	0	0	0	0	100	EA	\$9.800	EA	\$980.00
NS78605-M	SCRUB PANTS,CEIL, BLUE MED	0	0	0	0	0	0	0	100	EA	\$9.800	EA	\$980.00
1515-100	ELECTRODE EKG FASTRACE 100EA/PK	70	0	0	0	0	0	12	70	PK	\$9.950	PK	\$696.50
33-37	B-CPSY PUNCH 6MM DISP	12	0	0	0	0	0	2	62	EA	\$1.840	EA	\$114.08
GLVE02-6301	GLOVE NS ULTRACARE UN SZ POWDER FREE INNER SURFACE	20	0	0	0	0	0	3	50	BX	\$12.950	BX	\$705.00
26-04	GLOVES POLY UNISIZE	45	5	0	0	0	0	8	50	PK	\$1.024	PK	\$51.20
33-31	B-CPSY PUNCH 3MM DISP	0	0	0	0	0	0	0	50	EA	\$1.840	EA	\$92.00
33-35	B-CPSY PUNCH 6MM DISP	0	0	0	0	0	0	0	50	EA	\$1.840	EA	\$92.00
33-35	B-CPSY PUNCH 6MM DISP	0	0	0	0	0	0	0	50	EA	\$1.840	EA	\$92.00
NS78603-XL	SCRUB PANTS,CEIL, BLUE XL	0	0	0	0	0	0	0	50	EA	\$9.800	EA	\$475.00



Purchasing History

Customer #	Salesrep	Customer Name
UMC	BY FERT G	UNIVERSITY MED CAL CENTER NEW YORK CITY, NY 10016-1480

Sort By: [Click here to print customer purchasing history or export to Excel.](#)

Items per page: [Click here to print ship-to purchasing history or export to Excel.](#)

Your recent product usage is as follows:

Click on any product description for additional product information.

Product No	Product Description	Monthly Usage						Totl Avg	Sell YTD	UM	Last Price	Last UM	Total Expend
		Jul	Aug	Sep	Oct	Nov	Dec						
052122	GAUZE SPONGE NS 3X3 12PLY 200/PKG	0	500	0	0	0	0	53	3500	PK	\$4.400	PK	\$1,540.00
4882	EMESIS BASIN 9" 50002 IVORY	750	0	0	0	0	0	125	1250	EA	\$0.118	EA	\$147.50
R-5	CLIP, PAPER 902 100/PK 50	38	152	0	0	0	0	33	600	PK	\$2.550	PK	\$1,290.00
SM103	GLOVE FF NS MED UM SMOOTH 1000/CS	0	50	0	0	0	0	8	375	CS	\$39.800	CS	\$1,481.25
052113	GAUZE SPONGE NS 2X2 12PLY 200/PKG	120	0	0	0	0	0	20	360	PK	\$1.500	PK	\$540.00
052123	GAUZE SPONGE NS 4X4 12PLY 200/PKG	120	0	0	0	0	0	20	340	PK	\$5.250	PK	\$1,785.40
1222-6N	AUTOCCLAVE TAPE 3/4"STEAM 50YD/ROLL	48	48	0	0	0	0	16	310	RL	\$3.200	RL	\$692.00
567401	TOWEL PROF 13X15 3PLY FB POLY BACKED 500/CS	0	50	0	0	0	0	8	255	CS	\$17.400	CS	\$4,505.75
SM104	GLOVE FF NS LARGE SMOOTH 1000/CS	0	0	0	0	0	0	0	250	CS	\$39.800	CS	\$9,950.00
SM102	GLOVE FF NS SMALL SMOOTH 1000/CS	25	30	0	0	0	0	9	240	CS	\$39.800	CS	\$9,480.00
30200	APPL 0" NS COTTON TIP 1000/BX	40	0	0	0	0	0	7	130	BX	\$5.200	BX	\$367.60
1222-1N	AUTOCCLAVE TAPE 1" STEAM 60YD/ROLL	50	0	0	0	0	0	0	120	RL	\$4.000	RL	\$375.00
505762	OVR ONLY 3500 LIL 30 DX CAN USE W/SHO/E SAFETY PTD	50	0	0	0	0	0	10	120	DX	\$14.000	DX	\$1,075.40
032660	KERLX TYPE BANDAGE NS 4 1/2"X1.1YD	100	0	0	0	0	0	17	100	EA	\$1.750	EA	\$175.00
33-34	B-CPSY PUNCH 4MM DISP	0	0	0	0	0	0	0	100	EA	\$1.840	EA	\$184.00
NS78605-L	SCRUB PANTS,CEIL, BL, F, L, R/L	0	0	0	0	0	0	0	100	EA	\$9.800	EA	\$980.00
NS78605-M	SCRUB PANTS,CEIL, BL,JE, MED	0	0	0	0	0	0	0	100	EA	\$9.800	EA	\$980.00
1515-100	ELECTRODE EKG FASTRACE 100EA/PK	70	0	0	0	0	0	12	70	PK	\$9.950	PK	\$696.50
33-37	B-CPSY PUNCH 6MM DISP	12	0	0	0	0	0	2	62	EA	\$1.840	EA	\$114.08
GLVE02-6301	GLOVE NS ULTRACARE UN SZ POWDER FREE INNER SURFACE	20	0	0	0	0	0	3	50	BX	\$12.950	BX	\$705.00
26-04	GLOVES POLY UNISIZE	45	5	0	0	0	0	8	50	PK	\$1.024	PK	\$51.20
33-31	B-CPSY PUNCH 3MM DISP	0	0	0	0	0	0	0	50	EA	\$1.840	EA	\$92.00
33-35	B-CPSY PUNCH 6MM DISP	0	0	0	0	0	0	0	50	EA	\$1.840	EA	\$92.00
33-35	B-CPSY PUNCH 6MM DISP	0	0	0	0	0	0	0	50	EA	\$1.840	EA	\$92.00
NS78605-XL	SCRUB PANTS,CEIL, BL,JE, XL	0	0	0	0	0	0	0	50	EA	\$9.800	EA	\$475.00



Purchasing History

Customer #	Salesrep	Customer Name
UMC	BY FERT G	UNIVERSITY MED CAL CENTER NEW YORK CITY, NY 10016-1480

Sort By: [Click here to print customer purchasing history or export to Excel.](#)

Items per page: [Click here to print ship-to purchasing history or export to Excel.](#)

Your recent product usage is as follows:

Click on any product description for additional product information.

Product No	Product Description	Monthly Usage						Totl Avg	Sell YTD	UM	Last Price	Last UM	Total Expend
		Jul	Aug	Sep	Oct	Nov	Dec						
052122	GAUZE SPONGE NS 3X3 12PLY 200/PKG	0	500	0	0	0	0	53	3500	PK	\$4.400	PK	\$1,540.00
4882	EMESIS BASIN 9" 50002 IVORY	750	0	0	0	0	0	125	1250	EA	\$0.118	EA	\$147.50
R-5	CLIP, PAPER 902 100/PK 50	38	152	0	0	0	0	33	600	PK	\$2.550	PK	\$1,290.00
SM103	GLOVE FF NS MED UM SMOOTH 1000/CS	0	50	0	0	0	0	8	375	CS	\$39.800	CS	\$1,481.25
052113	GAUZE SPONGE NS 2X2 12PLY 200/PKG	120	0	0	0	0	0	20	360	PK	\$1.500	PK	\$540.00
052123	GAUZE SPONGE NS 4X4 12PLY 200/PKG	120	0	0	0	0	0	20	340	PK	\$5.250	PK	\$1,785.40
1222-6N	AUTOCCLAVE TAPE 3/4"STEAM 50YD/ROLL	48	48	0	0	0	0	16	310	RL	\$3.200	RL	\$592.00
567401	TOWEL PROF 13X15 3PLY FB POLY BACKED 500/CS	0	50	0	0	0	0	8	255	CS	\$17.400	CS	\$4,505.75
SM104	GLOVE FF NS LARGE SMOOTH 1000/CS	0	0	0	0	0	0	0	250	CS	\$39.800	CS	\$9,950.00
SM102	GLOVE FF NS SMALL SMOOTH 1000/CS	25	30	0	0	0	0	9	240	CS	\$39.800	CS	\$9,480.00
30200	APPL 0" NS COTTON TIP 1000/BX	40	0	0	0	0	0	7	130	BX	\$5.200	BX	\$367.60
1222-1N	AUTOCCLAVE TAPE 1" STEAM 60YD/ROLL	50	0	0	0	0	0	0	120	RL	\$4.000	RL	\$375.00
505762	OVR ONLY 3500 LIL 30/DX CAN USE W/SHO/E SAFETY PTD	50	0	0	0	0	0	10	120	DX	\$14.000	DX	\$1,075.40
032660	KERLX TYPE BANDAGE NS 4 1/2"X1.1YD	100	0	0	0	0	0	17	100	EA	\$1.750	EA	\$175.00
33-34	B-CPSY PUNCH 4MM DISP	0	0	0	0	0	0	0	100	EA	\$1.840	EA	\$184.00
NS78605-L	SCRUB PANTS,CEIL, BLUE M	0	0	0	0	0	0	0	100	EA	\$9.800	EA	\$980.00
NS78605-M	SCRUB PANTS,CEIL, BLUE M	0	0	0	0	0	0	0	100	EA	\$9.800	EA	\$980.00
1515-100	ELECTRODE EKG FASTRACE 100EA/PK	70	0	0	0	0	0	12	70	PK	\$9.950	PK	\$696.50
33-37	B-CPSY PUNCH 6MM DISP	12	0	0	0	0	0	2	62	EA	\$1.840	EA	\$114.08
GLVE02-6301	GLOVE NS ULTRACARE UN SZ POWDER FREE INNER SURFACE	20	0	0	0	0	0	3	50	BX	\$12.950	BX	\$705.00
26-04	GLOVES POLY UNISIZE	45	5	0	0	0	0	8	50	PK	\$1.024	PK	\$51.20
33-31	B-CPSY PUNCH 3MM DISP	0	0	0	0	0	0	0	50	EA	\$1.840	EA	\$92.00
33-35	B-CPSY PUNCH 6MM DISP	0	0	0	0	0	0	0	50	EA	\$1.840	EA	\$92.00
33-35	B-CPSY PUNCH 6MM DISP	0	0	0	0	0	0	0	50	EA	\$1.840	EA	\$92.00
NS78603-XL	SCRUB PANTS,CEIL, BLUE XL	0	0	0	0	0	0	0	50	EA	\$9.800	EA	\$475.00



Order#	Total Amount
000077	\$141.55

Accounts Receivable

[About Online Ordering](#) [Change Password](#) [Place an Order](#) [Inquiries](#) [Help](#) [Contact Us](#) [Home](#)

Customer #	Salesrep	Customer Name
UMC	SY FERTIG	UNIVERSITY MEDICAL CENTER ACCOUNTS PAYABLE/TRAVEL 400 BROADWAY AVE
Phone	Fax	NEW YORK CITY, NY 10018-1493 U.S.A.
212-777-1111	212-917-1111	

Highest Credit	Last Payment	AR Balance	Oldest Invoice
\$518.23	\$6.21 on 11/15/08	\$7,881.13	09/25/08

Sort By:

Items per page:

The following are open invoices for your account:

Line No.	Type	Invoice #	Inv. Date	Customer Ref.	Order#-Rel#	Original Amt.	Open Amt.
1	C/A	01128512	11/15/08	12345		\$-6.21	\$-6.21
2	INV	01517533	08/26/08	4000074780	01128933-005	\$78.76	\$0.00
3	INV	01517535	09/25/08	4000083283	01140055-001	\$84.00	\$0.00
4	INV	01517557	09/25/08	4000075485	01140210-002	\$10.88	\$0.00
5	INV	01517588	09/25/08	4000072825	01140311-001	\$1,550.18	\$0.00
6	INV	01517704	09/26/08	4000083283	01140055-002	\$48.75	\$0.00
7	INV	01517767	09/27/08	4000072825	01139798-004	\$374.75	\$374.75
8	INV	01517703	09/27/08	4000074780	01135933-000	\$10.44	\$10.44
9	INV	01517532	09/27/08	4000074780	01140401-001	\$595.95	\$49.95
10	INV	01517597	09/28/08	4000072825	01140311-002	\$8.55	\$8.55

AR TOTAL \$
10 \$440.40

24 Items 3 Pages Previous 1 2 3 Next

[Return to Previous Page](#)



Accounts Receivable

[About Online Ordering](#) [Change Password](#) [Place an Order](#) [Inquiries](#) [Help](#) [Contact Us](#) [Home](#)

Customer #	Salesrep	Customer Name
UMC	SY FERTIG	UNIVERSITY MEDICAL CENTER ACCOUNTS PAYABLE/TRAVEL 400 BROADWAY AVE
Phone	Fax	NEW YORK CITY, NY 10018-1493 U.S.A.
212-777-1111	212-917-1111	

Highest Credit	Last Payment	AR Balance	Oldest Invoice
\$518.23	\$6.21 on 11/15/08	\$7,881.13	09/25/08

Sort By:

Items per page:

The following are open invoices for your account:

Line No.	Type	Invoice #	Inv. Date	Customer Ref.	Order#-Rel#	Original Amt.	Open Amt.
1	C/A	01128812	11/15/08	12345		\$-6.21	\$-6.21
2	INV	01617833	08/26/08	4000074780	01128833-005	\$78.76	\$0.00
3	INV	01517838	09/25/08	4000083283	01140055-001	\$84.00	\$0.00
4	INV	01517857	09/25/08	4000075488	01140210-002	\$10.88	\$0.00
5	INV	01517888	09/25/08	4000072825	01140311-001	\$1,550.18	\$0.00
6	INV	01517704	09/26/08	4000083283	01140055-002	\$48.75	\$0.00
7	INV	01517767	09/27/08	4000072825	01139798-004	\$374.75	\$374.75
8	INV	01517703	09/27/08	4000074780	01139983-000	\$10.44	\$10.44
9	INV	01517832	09/27/08	4000074780	01140401-001	\$49.95	\$49.95
10	INV	01517897	09/28/08	4000072825	01140311-002	\$8.55	\$8.55

AR TOTAL \$							\$440.40
--------------------	--	--	--	--	--	--	----------

24 Items 3 Pages

[Previous](#) [1](#) [2](#) [3](#) [Next](#)

[Return to Previous Page](#)



Order#	Total Amount
000077	\$141.55

Accounts Receivable

[About Online Ordering](#)
[Change Password](#)
[Place an Order](#)
[Inquiries](#)
[Help](#)
[Contact Us](#)
[Home](#)

Customer #	Salesrep	Customer Name
UMC	SY FERTIG	UNIVERSITY MEDICAL CENTER ACCOUNTS PAYABLE/TRAVEL 400 BROADWAY AVE
Phone	Fax	NEW YORK CITY, NY 10018-1493 U.S.A.
212-777-1111	212-917-1111	

Highest Credit	Last Payment	AR Balance	Oldest Invoice
\$518.23	\$6.21 on 11/15/08	\$7,881.13	09/25/08

Sort By:

Items per page:

The following are open invoices for your account:

Line No.	Type	Invoice #	Inv. Date	Customer Ref.	Order#-Rel#	Original Amt.	Open Amt.
1	C/A	01128812	11/15/08	12345		\$-6.21	\$-6.21
2	INV	01617633	08/26/08	4000074780	01128833-005	\$78.76	\$0.00
3	INV	01517638	09/25/08	4000083283	01140055-001	\$84.00	\$0.00
4	INV	01517657	09/25/08	4000075489	01140210-002	\$10.88	\$0.00
5	INV	01517688	09/25/08	4000072825	01140311-001	\$1,550.18	\$0.00
6	INV	01517704	09/26/08	4000083283	01140055-002	\$48.75	\$0.00
7	INV	01517767	09/27/08	4000072825	01139798-004	\$374.75	\$374.75
8	INV	01517703	09/27/08	4000074780	01139963-000	\$10.44	\$10.44
9	INV	01517632	09/27/08	4000074780	01140401-001	\$49.95	\$49.95
10	INV	01517697	09/28/08	4000072825	01140311-002	\$8.55	\$8.55

AR TOTAL \$
10 \$440.40

24 Items 3 Pages Previous 1 2 3 Next

[Return to Previous Page](#)

Accounts Receivable

Customer #	Salesr
UMC	SY FEET
Phone	Fax
212-777-1111	212-817-

Highest Credit
\$318.25

Sort By:

Items per page:

The following are open invoices for you

Line No.	Type	Invoice #	Inv
1	O/A	01128612	11/1
2	INV	01517633	09/2
3	INV	01517638	09/2
4	INV	01517657	09/2
5	INV	01517685	09/2
6	INV	01517704	09/2
7	INV	01517757	09/2
8	INV	01017703	09/2
9	INV	01517632	09/27/03
10	INV	01517697	09/26/03

AR TOTAL \$							
10							\$440.40

[Return to Previous Page](#)

Accounts Receivable Detail - 01517633 - Windows Intern...

http://hosting.tshinc.com/cgi-bin/olecgi.exe/ardetail012?orderno=000077&submitvar=01517633

Line#	Type	Date	Ref. No.	Amount	Reference Data
1	INV	09/26/08		\$79.75	4000074780
2	PMT	11/16/08	517633	\$-79.75	12345

Above is your detailed payment information for this transaction.

Copyright © 2009 The Systems House, Inc. Problems? Click here to email the Webmaster					
Done		Internet	100%		



The Systems House, Inc.

Software Solutions for Importers and Distributors

Order#	Total Amount
001544	\$0.00

Backorder Inquiry

[About Online Ordering](#) [Change Password](#) [Place an Order](#) [Inquiries](#) [Help](#) [Contact Us](#) [Home](#)

Back Orders for Account No. UMC
 UNIVERSITY MEDICAL CENTER
 1 STATION PLAZA
 TEST 2
 THE CITY CENTER OF EDMONT, WA 07000

Sort By:
 Items per page:

Product Code	Product Description	Customer PO	Order#-Line#	Order Date	Estimated Ship Date	Order Qty	BO Qty	UM	Unit Price	Extended Price
PRODUM999	UNIT OF MEAS TESTING	001024	01141922-002	07/09/2007		2	2	EA	1.04	\$2.08
AQUA-01/08	0.25 LITER ULTRASND GEL	000119	01138049-001	05/30/2003		3	3	EA	5.00	\$15.00
AQUA-01/01	20G STER. OVERWRAPPED	000119	01138049-002	05/30/2003		3	3	EA	12.00	\$36.00
AQUA-01/08	0.25 LITER ULTRASND GEL	000119	01138057-001	05/30/2003		3	3	EA	5.00	\$15.00
AQUA-01/01	20G STER. OVERWRAPPED	000119	01138057-002	05/30/2003		3	3	EA	12.00	\$36.00

15 Items 2 Pages Previous 1 2 Next

[Return to Previous Page](#)



Order#	Total Amount
001544	\$0.00

Backorder Inquiry

[About Online Ordering](#) [Change Password](#) [Place an Order](#) [Inquiries](#) [Help](#) [Contact Us](#) [Home](#)

Back Orders for Account No. UMC
 UNIVERSITY MEDICAL CENTER
 1 STATION PLAZA
 TEST 2
 THE CITY CENTER OF EDMONT, WA 07000

Sort By:
 Items per page:

Product Code	Product Description	Customer PO	Order#-Line#	Order Date	Estimated Ship Date	Order Qty	BO Qty	UM	Unit Price	Extended Price
PRODUM999	UNIT OF MEAS TESTING	001024	01141922-002	07/09/2007		2	2	EA	1.04	\$2.08
AQUA-01/08	0.25 LITER ULTRASND GEL	000119	01138049-001	05/30/2003		3	3	EA	5.00	\$15.00
AQUA-01/01	20G STER. OVERWRAPPED	000119	01138049-002	05/30/2003		3	3	EA	12.00	\$36.00
AQUA-01/08	0.25 LITER ULTRASND GEL	000119	01138057-001	05/30/2003		3	3	EA	5.00	\$15.00
AQUA-01/01	20G STER. OVERWRAPPED	000119	01138057-002	05/30/2003		3	3	EA	12.00	\$36.00

15 Items 2 Pages Previous 1 2 Next

[Return to Previous Page](#)



Order#	Total Amount
000062	50.00

Product Contract Search

[About Online Ordering](#) [Change Password](#) [Place an Order](#) [Inquiries](#) [Help](#) [Contact Us](#) [Home](#)

Customer #	Salesrep	Customer Name
UMC	SY FERTIG	UNIVERSITY MEDICAL CENTER NEW YORK CITY, NY 10016-1480

Enter your search criteria and click on **Search**. [Click here to view Search Tips](#)

Product Code:

Product Description:

Vendor:

Vendor Part#:

Manufacturer:

Manufacturer Part#:

Customer Item#:





Order#	Total Amount
000062	50.00

Product Contract Search

[About Online Ordering](#) [Change Password](#) [Place an Order](#) [Inquiries](#) [Help](#) [Contact Us](#) [Home](#)

Customer #	Salesrep	Customer Name
UMC	SY FERTIG	UNIVERSITY MEDICAL CENTER NEW YORK CITY, NY 10016-1480

Enter your search criteria and click on **Search**. [Click here to view Search Tips](#)

Product Code:

Product Description:

Vendor:

Vendor Part#:

Manufacturer:

Manufacturer Part#:

Customer Item#:



Order#	Total Amount
000062	\$0.00

Product Contract Search



[About Online Ordering](#)
[Change Password](#)
[Place an Order](#)
[Inquiries](#)
[Help](#)
[Contact Us](#)
[Home](#)

Customer #
UMC

Enter your search criteria and click

Product Code:
Product Description:
Vendor:
Vendor Part#:
Manufacturer:
Manufacturer Part#:
Customer Item#:

RemoteNet - Search Tips - Windows Internet Explorer

http://hosting.tshinc.com/rn/SearchTips.html

Search Tips

Enter one or more of the following items in the Product Search input boxes to find the desired products. Click the **SEARCH** button to begin the selection. Click the **RESET** button if you wish to start over.

Product Code
Enter a Product Code to select a specific product. The search will be restricted to all products that have a Product Code containing this value.

Product Description
Enter a word or phrase. The search will be restricted to all products that have a product description containing this word or phrase.

You have the option of building a more powerful search by entering multiple words in the Product Description box. The Product Search process will join these words with the **AND** operator when the words are separated by the + (plus) sign. The Product Search process will join these words with the **OR** operator when the words are separated by the | (vertical bar) sign.

At this time you may not mix the operators between words.

Done Internet 100%



Order#	Total Amount
000072	\$0.00

Product Contract Search Results

[About Online Ordering](#) [Change Password](#) [Place an Order](#) [Inquiries](#) [Help](#) [Contact Us](#) [Home](#)

Customer #	Salesrep	Customer Name
UMC	SY FERTIG	UNIVERSITY MED CAL CENTER NEW YORK CITY, NY 10016-1460

Sort By: Save as Default

Items per page: Save as Default

Contract#	Vend#	Vendor Name	Product Code	Description	Vendor Part#	Mfg Part#	Customer Item#	Avail	Start Date	End Date	Price/UM
CD-03-MS-KND-05	KND	KENDALL HEALTHCARE	KND2231	BANDAGE CONFORM 2"X75" ST	KND2231	2231		677	06/01/03	05/31/06	\$8.004/CS
CD-03-MS-KND-05	KND	KENDALL HEALTHCARE	KND2232	BANDAGE CONFORM 3"X75" ST	KND2232	2232		1633	06/01/03	05/31/06	\$10.360/CS
CD-03-MS-KND-05	KND	KENDALL HEALTHCARE	KND2236	BANDAGE CONFORM 4"X75" ST	KND2236	2236		823	06/01/03	05/31/06	\$12.432/CS
CD-03-MS-KND-05	KND	KENDALL HEALTHCARE	KND2238	BANDAGE CONFORM 6"X75" ST	KND2238	2238		165	06/01/03	05/31/06	\$9.214/CS
CD-03-MS-KND-05	KND	KENDALL HEALTHCARE	KND2239	*BANDAGE CONFORM 1"X75" N	KND2239	2239		0	06/01/03	05/31/06	\$3.260/CS
CD-03-MS-KND-05	KND	KENDALL HEALTHCARE	KND2242	BANDAGE CONFORM 2"X75" NO	KND2242	2242		15	06/01/03	05/31/06	\$4.342/CS
CD-03-MS-KND-05	KND	KENDALL HEALTHCARE	KND2244	BANDAGE CONFORM 3"X75" NO	KND2244	2244		84	06/01/03	05/31/06	\$5.460/CS
CD-03-MS-KND-05	KND	KENDALL HEALTHCARE	KND2247	BANDAGE CONFORM 4"X75" NO	KND2247	2247		36	06/01/03	05/31/06	\$8.482/CS
CD-03-MS-KND-05	KND	KENDALL HEALTHCARE	KND2252	*DRESS SPONGE 2"X2" 12 PL	KND2252	2252		0	06/01/03	05/31/06	\$20.000/CS

9 Items

1 Page

[Previous](#) [Next](#)



Order#	Total Amount
000072	\$0.00

Product Contract Search Results

[About Online Ordering](#)
[Change Password](#)
[Place an Order](#)
[Inquiries](#)
[Help](#)
[Contact Us](#)
[Home](#)

Customer #	Salesrep	Customer Name
UMC	SY FERTIG	UNIVERSITY MED CAL CENTER NEW YORK CITY, NY 10016-1460

Sort By: Save as Default

Items per page: Save as Default

Contract#	Vend#	Vendor Name	Product Code	Description	Vendor Part#	Mfg Part#	Customer Item#	Avail	Start Date	End Date	Price/UM
CD-03-MS-KND-05	KND	KENDALL HEALTHCARE	KND2231	BANDAGE CONFORM 2"X75" ST	KND2231	2231		677	06/01/03	05/31/06	\$8.004/CS
CD-03-MS-KND-05	KND	KENDALL HEALTHCARE	KND2232	BANDAGE CONFORM 3"X75" ST	KND2232	2232		1633	06/01/03	05/31/06	\$10.360/CS
CD-03-MS-KND-05	KND	KENDALL HEALTHCARE	KND2236	BANDAGE CONFORM 4"X75" ST	KND2236	2236		823	06/01/03	05/31/06	\$12.432/CS
CD-03-MS-KND-05	KND	KENDALL HEALTHCARE	KND2238	BANDAGE CONFORM 6"X75" ST	KND2238	2238		165	06/01/03	05/31/06	\$9.214/CS
CD-03-MS-KND-05	KND	KENDALL HEALTHCARE	KND2239	*BANDAGE CONFORM 1"X75" N	KND2239	2239		0	06/01/03	05/31/06	\$3.260/CS
CD-03-MS-KND-05	KND	KENDALL HEALTHCARE	KND2242	BANDAGE CONFORM 2"X75" NO	KND2242	2242		15	06/01/03	05/31/06	\$4.342/CS
CD-03-MS-KND-05	KND	KENDALL HEALTHCARE	KND2244	BANDAGE CONFORM 3"X75" NO	KND2244	2244		84	06/01/03	05/31/06	\$5.460/CS
CD-03-MS-KND-05	KND	KENDALL HEALTHCARE	KND2247	BANDAGE CONFORM 4"X75" NO	KND2247	2247		36	06/01/03	05/31/06	\$8.482/CS
CD-03-MS-KND-05	KND	KENDALL HEALTHCARE	KND2252	*DRESS SPONGE 2"X2" 12 PL	KND2252	2252		0	06/01/03	05/31/06	\$20.000/CS

9 Items

1 Page

Previous 1 Next



Order#	Total Amount
000052	\$0.00

Customer Contract Inquiry

[About Online Ordering](#) [Change Password](#) [Place an Order](#) [Inquiries](#) [Help](#) [Contact Us](#) [Home](#)

Customer #	Salesrep	Customer Name
UMC	SY FERTIG	UNIVERSITY MEDICAL CENTER NEW YORK CITY, NY 10018-1460

Sort By:

Items per page:

Contract#	Vendor#	Vendor Name	Start Date	End Date	Univ	PD	RB
10C0045623 INFUSION PRODUCTS	BD		12/01/04	08/31/07	Y	Y	Y
CD-03-MS-KND-05 WOUND CARE/DUAL SOURCE	KND	KENDALL HEALTHCARE	06/01/03	06/31/06	N	Y	Y
MC130918 NEEDLES & SYRINGES	KND	KENDALL HEALTHCARE	12/01/03	11/30/06	Y	Y	Y

3 Items 1 Page

[Previous](#) [1](#) [Next](#)

[Return to Previous Page](#)



Electronic Document Management

www.tshinc.com

Order#	Total Amount
001538	\$439.00

Web Audit

[About Online Ordering](#) [Change Password](#) [Place an Order](#) [Inquiries](#) [Help](#) [Contact Us](#) [Home](#)

Web Order Audit Listing

Order#	Date	Time	# Items	Total Amt	Rollback
001538*15067*57375	04/01/09	03:56:15pm	3	\$439.00	Rollback
001538*15067*57357	04/01/09	03:56:07pm	3	\$439.00	Rollback
001538*15067*57352	04/01/09	03:55:52pm	2	\$398.00	Rollback
001538*15067*57337	04/01/09	03:55:37pm	2	\$398.00	Rollback
001538*15067*57308	04/01/09	03:55:08pm	2	\$398.00	Rollback
001538*15067*57247	04/01/09	03:54:07pm	2	\$398.00	Rollback

[Return to Current Order](#)



Electronic Document Management

www.tshinc.com

Order#	Total Amount
001519	\$0.00

Shipping Inquiry

[About Online Ordering](#)
[Change Password](#)
[Place an Order](#)
[Inquiries](#)
[Help](#)
[Contact Us](#)
[Home](#)

Customer #	Sold To	Ship To
UMC	UNIVERSITY MEDICAL CENTER 1 STATION PLAZA TEST 2	UNIVERSITY MEDICAL CENTER - LARRYH LARRYH UMC SHIP-TO ADDR 1 LARRYH UMC SHIP-TO ADDR2 LARRYH UMC SHIP-TO ADDR3
Salesrep	THE CITY CENTER OF EDMONT, WA 07000	CLFTON, NJ 07003
Salesman-001	U.S.A.	

Web Order#	Order Date	Req. Date	Req. No.	Cust PO	Ordered By	Terms
001425	01/06/09	01/06/09		PO-468		2/10 NET 30

Order#	Invoice#	Invoice Date	Ship Date	Ship Method
01145937				FEDERAL EXPRESS

Special Instructions:

THIS IS A TEST ORDER

Release detail for your order:

Line No.	Product No.	Product Description	Ord Qty	Ord UM	Ship Qty	BkOrd Qty	InPick Qty	Price	Prc UM	Prc Qty	Ext. Price	Est B/O Ship Date
1	CE4mm1	Cats Eye/Optic Beads Round, White, 4mm	1	EA		1	0	\$0.80		1	\$0.80	
2	CE8mm2	Cats Eye/Optic Beads Round, Yellow, 8mm	1	EA		0	1	\$100.00		1	\$100.00	
3	CE8mm7	Cats Eye/Optic Beads Square Disk, Lt. Brn, 8mm	1	EA		1	0	\$200.00		1	\$200.00	
4	PILSW10PP-GRN	PLOT RAZOR POINT-GREEN	12	DZ		0	12	\$128.16		12	\$128.16	

WEB PRODUCT CLASS MAINTENANCE

WEB PRODUCT CLASS 007

1.DESCRPTION Electronic Document Mgmt

2.ADVERTISING IMAGE dms.gif

3.WEB LINK <http://hosting.tshinc.com/rn/images/specials.pdf>

4.CLASS IMAGE

ENTER LINE # TO CHANGE,DELETE TO DELETE,0 TO ACCEPT XXXXXX

HELP	OKEND	INSERT	LDELETE	PREV PG	NEXT PG	INQUIRY	CANCEL	Off			Popup
------	-------	--------	---------	---------	---------	---------	--------	-----	--	--	-------

WEB CODES MAINTENANCE

CODE RQ

1.Description

Shipment Inq

2.Web Product Class

007

Electronic Document Mgmt

ENTER LINE # TO CHANGE,DELETE TO DELETE,0 TO ACCEPT

XXXXXX

HELP	OK/END	INSERT	LDELETE	PREV PG	NEXT PG	INQUIRY	CANCEL	Off			Popup
------	--------	--------	---------	---------	---------	---------	--------	-----	--	--	-------

Customer Master Maintenance

Internal #

100068

Created

10/15/91

Customer# CASH

21.Special Pricing

1.Name CASH CUSTOMER

22.Spec Prc Cont#

2.Address 1 455 MONEY WAY

23.Shipto Code

R

3.Address 2

24.Ship Method

01

UPS

4.Address 3

25.Ship Zone

5.City CLIFTON

26.Terms Code

05

MDS CREDIT CARD

6.State NJ Country 000 U.S.A.

27.Taxable

X

7.Zip Code 07013 8.Res/Comm

28.Tax Juris

1 NEW JERSEY

9.DEA Code

29.Tax Exempt #

10.A/R Contact

30.Exempt Exp Dt

11.Telephone 732-666-7777

31.Service Chg

N

Days 0

12.Fax Number

32.Credit Method

05

Email

33.Credit Limit

1000

13.Master A/R

34.Credit Days

14.Cust Class 08 MEDICAL CENTER

35.Credit Hold

N

15.Cust Type 08 MEDICAL CENTER

36.Accept B'O

Y

16.Cust Group

37.Accept Partial

Y

17.Territory

38.Accept Subs

Y

18.Spec Inst

39.Prc Hld Exempt

N

19.Purch Cont

40.ALC Priority

20.Purch Phone

41.Inactive Flag

ENTER LINE # TO CHANGE,DELETE TO DELETE,0 TO ACCEPT

XXXXXX

PAGE 1 OF 6

HELP	OK/END	INSERT	LDELETE	PREV PG	NEXT PG	NOTES INQUIRY	CANCEL	Off	Userfile Popup
------	--------	--------	---------	---------	---------	------------------	--------	-----	-------------------

RemoteNet User Maintenance

RemoteNet User ID: CASH
Last Updated: 03/25/09
Time: 05:27:31pm

1.Password	CASH	
2.Customer No.	CASH	CASH CUSTOMER
3.Salutation		
4.First Name		
5.Last Name	CASH CUSTOMER	
6.Title		
7.Department Name		
8.Telephone#		
9.Fax Number		
10.Email Address		
11.Default Co. No.	01	The Systems House, Inc
12.Default Ship-To	R	SAME AS CUSTOMER
13.Default Dept No.		
14.Default Warehouse	001	NORTHEAST WAREHOUSE
15.Salesman Flag	N	
16.Salesman No.	001	Salesman-001
17.Cash Customer Flag	Y	
18.Show Master AR Info	N	
19.Show Credit Cards	N	

ENTER LINE # TO CHANGE,DELETE TO DELETE,0 TO ACCEPT XXXXXX PAGE 1 OF 2

RemoteNet User Maintenance

RemoteNet User ID CASH

User Capabilities

20.Administrative User	N
21.Max Order Amt	0.00
22.Approve Orders	Y
23.Max Approve Amt	0.00
24.Override Ship Method	Y
25.Default Ship Method	
26.Allowable Ship Methods	
27.Override Ship-To	M
28.Create Templates	N
29.Delete Templates	N
30.Order Off Template	Y
31.Allow Quick Order	Y

32.Inventory Inquiry	N
33.Open Order Inquiry	N
34.Purchase Hist Inquiry	N
35.Accounts Recv Inquiry	N
36.Cust/Item Price Inquiry	N
37.Back Order Inquiry	N
38.Product Contract Inquiry	N
39.Customer Contract Inquiry	
40.Web Audit Order Inquiry	

41.Show Pedigree Forms	
42.Bypass Orders-on-Hold	
43.Default Items per Page	10
44.Current Order Sort	4
45.Template Order Sort	6
46.Product Search Sort	6
47.Product Contract Srch Sort	

Web Security

48.Disclaimer Accepted	Y
49.Pin Code	11180510070
50.PIN Expiration Date	01/21/11

ENTER LINE # TO CHANGE,DELETE TO DELETE,0 TO ACCEPT XXXXXX

PAGE 2 OF 2

Welcome to RemoteNet

On-line Customer Information System from The Systems House, Inc.

Welcome to Online Ordering
PLEASE LOGIN:

Please enter your Web Customer ID:	CASH
Please enter your Password:	••••
<input type="button" value="Login"/>	<input type="button" value="Clear Form"/>

[Please Click here to view our On-line Catalog](#)

NEW TO WEB ORDERING?

For a Demo Login use the following codes:

[Please Click here for Interactive DEMO Notes](#)

For Order Entry Demo enter
Web Customer ID: [DEMO](#)
Password: [DEMO](#)

For Salesman Demo enter
Web Customer ID: [SLS](#)
Password: [SLS](#)

[Not a web customer yet? Email us](#)



NOTE: This system requires Microsoft Internet Explorer 5.0 or greater.
To download the latest version of IE5, please go to Microsoft.com

©2003 The Systems House, Inc. www.tshinc.com

FORGOT YOUR WEB CUSTOMER NUMBER?

Enter the account email
address* below and we will
send it to you.

*Please note: To receive
web customer login
information, the email
address entered here
MUST match the email
address on file for your
account.

Login Problems?
Email us!

weblogin@tshinc.com



Enter information in the fields below, then click "CREATE USER" at the bottom of this page.

Required information is highlighted.

Salutation: MS.
First Name: VERONICA
Last Name: KEELER
Phone Number: 845-777-5555
Fax Number: 845-888-5556
Email Address: ver@yhoo.com
Bill-To Name: VERONICA KEBLER
Bill-To Address 1: 22 MAPLE AVE
Bill-To Address 2:
Bill-To Address 3:
Bill-To City, State: GOSHEN NY
Bill-To Zipcode: 10950
Bill-To Country: US

Create User Reset



RemoteNet Web Specials
Click here for web only specials!



The Systems House, Inc.

Software Solutions for
Importers and Distributors

Order#	Total Amount
001530	\$0.00

Order Entry Header

[About Online Ordering](#) [Place an Order](#) [Inquiries](#) [Help](#) [Contact Us](#) [Home](#)

Welcome Ms. Veronica Kebler

To place a new order please fill in order information below :

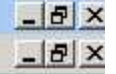
Required information is highlighted:

Web Order Number: 001530

Account #	Sold to	Ship to
DASH001530	VERONICA KEBLER 22 MAPLE AVE GOSHEN, NY 10950 US	VERONICA KEBLER 22 MAPLE AVE GOSHEN NY 10950 US

Click Here to change ship to: VERONICA KEBLER 22 MAPLE AVE

Required Date:
Dept. No:
Customer PO:
Req. No:
Ordered By: VERONICA KEBLER
Ship Method: 01 - UPS
Special Instructions:



Customer Master Maintenance

NOTES

Internal # 100011

Customer# UMC

Remote Net Info/Flags

97.Percent Usage 100

98.Display Pricing Y

99.Reg Date Flag N

100.Dept No. Flag N

101.Customer PO Flag N

102.Reg # Flag N

103.Ordered-By Flag N

104.Association Codes

01

105.Authenticate Flag N

ENTER LINE # TO CHANGE,DELETE TO DELETE,0 TO ACCEPT

XXXXXX

PAGE 5 OF 6

						NOTES				Userfile
HELP	OK/END	INSERT	LDELETE	PREV PG	NEXT PG	INQUIRY	CANCEL	Off		Popup

Product Master Maintenance

Product # 1700 100652

76.Environment Code Flag
 77.Combo Code
 78.PO Combo Code
 79.Quality for Free Freight

80.Promotional Price Beg Date End Date

81.Country of Origin 000 U.S.A.

82.International Description

83.Wild Card WOUND CARE

84.Product Assoc Codes 01

85.Catalog Product Y

87.Image Xref

88.Thumbnail Xref

89.Datasheet Xref

90.Small Desc for Web

Features: Filled with layer of

cellulose wadding covered with non-

91.Large Desc for Web

86.Web Catalog Codes

Prod Type	Prod Class	Product Category	Product Subcatg
001	001		

ENTER LINE # TO CHANGE,DELETE TO DELETE,0 TO ACCEPT XXXXXX PAGE 3 OF 5

- Browse**
- MILONIC
- Carpet Cleaners
- Cats Eye/Optic Beads
- Desk Drawer Keys
- Kendall Healthcare Prods
- Medical Specialty
- Medical Supplies
- Office Furniture Set
- Office Supplies
- Plastic Desk Drawers
- Plastic Desk Sides
- Plastic Desk Tops
- Plastic Desks
- Prescription Drugs
- Rn Medical Supplies

Web Order #	Customer PO#	Ship to
-------------	--------------	---------



001532	None	UNIVERSITY MEDICAL CENTER EDMONTON NJ 07300
--------	------	--

Sort By: Save as Default

Items per page: Save as Default

Enter Quantities in boxes, and click an UPDATE button below to add quantities to your current order.
Click on a Product Picture or Product Number for additional product information.

CURITY

Product No. Cust Item#	Description	In Stock	Mfr	Mfr PN#	Price/UM	Qty
 1987	CURITY Multi-Trauma 10"x30", 1/Bag Dressing	X	Kendall Healthcare	1987	\$300.00 EA / 1	<input type="text"/>
 2146	CURITY Gauze Sponges Bulk 2"x2", 3 Ply	X	Kendall Healthcare	2146	\$200.00 EA / 1	<input type="text"/>

001533	None	UNIVERSITY MEDICAL CENTER EDMONTON, NJ 07000
--------	------	---

Items per page:

Enter Product ID and Quantity. Then click the "Add To Order" button below.
 Note: Items will be added to the Current Order in the standard Selling Unit of Measure

Product No.	QTY
7088	1



Electronic Document Management
www.tshinc.com

Order#	Total Amount
001533	\$0.00

Current Order

[About Online Ordering](#) [Change Password](#) [Place an Order](#) [Inquiries](#) [Help](#) [Contact Us](#) [Home](#)

- Browse**
- MILONIC
- Carpet Cleaners
- Cats Eye/Optic Beads
- Desk Drawer Keys
- Kendall Healthcare Prods
- Medical Specialty
- Medical Supplies
- Office Furniture Set
- Office Supplies
- Plastic Desk Drawers

Web Order #	Customer PO#	Ship to
001533	None	UNIVERSITY MEDICAL CENTER EDMONTON, NJ 07000
Sort By: <input type="text" value="Product Description"/> <input type="button" value="GO"/> <input type="checkbox"/> Save as Default Items per page: <input type="text" value="10"/> <input type="button" value="GO"/> <input type="checkbox"/> Save as Default		
Below is your current order information. Click the DELETE button to delete that line item from your order. When your order is complete, click "Send Order Now", or click "Hold Order" to save this order for processing at a later date. To change quantities, change the ORD QTY value in the boxes below, and click "Update Order".		
Line Product No. No.	Product Description	Manufacturer In (OR) Stock QTY UM Price Ext. Price Delete Item
ORDER TOTALS		
0 Items		\$0.00
0 Item	0 Page	Previous Next
Order Comments:		<input type="button" value="GO"/>



RemoteNet E-Procurement Interface



E-Procurement Parameters

- Parameter 001 File
- CXML.FLAG – 'Y' indicates the Remotenet website is enabled for processing of cXML documents

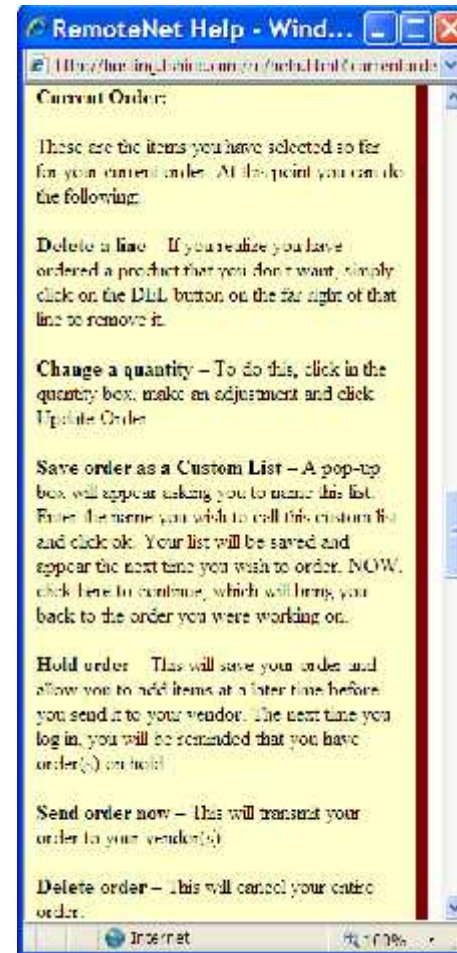


E-Procurement Parameters

- Parameter Files
- SUPPLIER.CXML.PARAMS – used in the cXML templates to pass back to the procurement website in the punchout setup response and punch order message cXML documents.
- WEBSITE.ID.EPROCURE - the E-procurement website uses this as the startup address to assist RemoteNet to start up with a previously entered web order number.



RemoteNet Help





Contact Us

The Systems House, Inc.

Phone:	800-637-5556
Fax:	973-777-3063
Email:	info@tshinc.com

If you have a comment on, or problem with this site please let us know!

[mail to webmaster@tshinc.com](mailto:webmaster@tshinc.com)

[Click here to return to your previous page.](#)

Copyright © The Systems House, Inc.
[Problems? Click here to email the Webmaster](#)

Our company relies on your feedback to continually improve our website's services and information. Please fill out this form or give us your comments in the box below.

EASE OF USE – Ordering Methods:

Please rate the ease of use for the following order entry methods on RemoteNet. (1 indicates very difficult, 5 indicates very simple)

Custom Lists:	<input type="radio"/> 1	<input type="radio"/> 2	<input type="radio"/> 3	<input type="radio"/> 4	<input type="radio"/> 5
Product Search:	<input type="radio"/> 1	<input type="radio"/> 2	<input type="radio"/> 3	<input type="radio"/> 4	<input type="radio"/> 5
Quick Order:	<input type="radio"/> 1	<input type="radio"/> 2	<input type="radio"/> 3	<input type="radio"/> 4	<input type="radio"/> 5
Purchase History:	<input type="radio"/> 1	<input type="radio"/> 2	<input type="radio"/> 3	<input type="radio"/> 4	<input type="radio"/> 5

OVERALL SITE FUNCTIONALITY:

(1 indicates unsatisfactory, 5 indicates above expectations)

My overall satisfaction with the site is: 1 2 3 4 5

SPEED OF SITE:

(1 indicates unsatisfactory, 5 indicates above expectations)

Site Speed: 1 2 3 4 5
 Internet connection: Please Choose a connection

USEFULNESS OF WEBSITE:

(1 indicates disagree, 5 indicates agree)

Helpful in managing my practice business:	<input type="radio"/> 1	<input type="radio"/> 2	<input type="radio"/> 3	<input type="radio"/> 4	<input type="radio"/> 5
Provides useful information:	<input type="radio"/> 1	<input type="radio"/> 2	<input type="radio"/> 3	<input type="radio"/> 4	<input type="radio"/> 5
Better than using individual vendors sites:	<input type="radio"/> 1	<input type="radio"/> 2	<input type="radio"/> 3	<input type="radio"/> 4	<input type="radio"/> 5

ADDITIONAL INFORMATION:

What additional information would be helpful for you to be able to access via RemoteNet?

[Empty text area for additional information]

How many vendors do you currently purchase Medical/Pharmaceutical products from?

Would you like to purchase from additional vendors at this site? YES NO

If yes, who?

Vendor Name	Contact Name	Phone Number

Customer Master Maintenance

NOTES

Internal #

100011

Customer# UMC

42.Dea# ZZ9000059
 43.Dea Exp Date 09/09/09
 44.Drug Type 1. 02 CONTROLLED
 2. XX TEST
 45.License # 123123
 46.Lic Exp Date 01/01/09
 47.Med Data Sht N
 48.Monthly Bill N
 49.Serv Co# 01
 50.Serv Whse 001
 51.Hospital ID#
 52.Admin Fee % 0.00
 53.Label Fee 0.00
 54.Facility FAX002
 55.Department

56.Freight Class
 57.Charge Freight Y
 58.Frt Surchage % 0.00
 59.Frt Surchage \$ 0.00
 60.Apply To
 61.Frt Min Dol 50
 62.EDI Cust# UMC
 63.Recv 850.EDI Y
 64.Send 855 EDI Y
 65.Send 856 EDI Y
 66.Send 810 EDI Y
 67.Cust.PO # Y
 68.Wild Card Cornell
 69.DUNS Number 234654789987
 70.Dunning Flag N
 71.Pick Priority

ENTER LINE # TO CHANGE,DELETE TO DELETE,D TO ACCEPT

KXXXXX

PAGE 2 OF 6

						NOTES				Userfile
HELP	OK/END	INSERT	LDELETE	PREV PG	NEXT PG	INQUIRY	CANCEL	Off		Popup

Customer Master Maintenance

NOTES

Internal #

100011

Customer#

UMC

Remote Net Info/Flags

97.Percent Usage 85

98.Display Pricing Y

99.Reg Date Flag N

100.Dept No. Flag N

101.Customer PO Flag N

102.Reg # Flag N

103.Ordered-By Flag N

104.Association Codes

01

105.Authenticate Flag N

ENTER LINE # TO CHANGE,DELETE TO DELETE,0 TO ACCEPT

XXXXXX

PAGE 5 OF 6

					NOTES					Userfile
HELP	OK/END	INSERT	LDELETE	PREV PG	NEXT PG	INQUIRY	CANCEL	Off		Popup

Product Master Maintenance

Product # 1700 100652

76.Environment Code Flag
77.Combo Code
78.PO Combo Code
79.Qualify for Free Freight

80.Promotional Price Beg Date End Date

81.Country of Origin 000 U.S.A.

82.International Description

83.Wild Card WOUND CARE

RemoteNet

84.Product Assoc Codes 00

85.Catalog Product Y

86.Web Catalog Codes

87.Image Xref

Prod Type	Prod Class	Product Category	Product Subcatg
-----------	------------	------------------	-----------------

88.Thumbnail Xref

001	001		
-----	-----	--	--

89.Datasheet Xref

90.Small Desc for Web

--	--	--	--

Features: Filled with layer of cellulose wadding covered with non-

91.Large Desc for Web

--	--	--	--

--	--	--	--

--	--	--	--

--	--	--	--

ENTER LINE # TO CHANGE,DELETE TO DELETE,0 TO ACCEPT XXXXXX PAGE 3 OF 5

Product Master Maintenance

Product # 1700 100652

76.Environment Code Flag
77.Combo Code
78.PO Combo Code
79.Qualify for Free Freight

80.Promotional Price Beg Date End Date

81.Country of Origin 000 U.S.A.

82.International Description

83.Wild Card WOUND CARE

RemoteNet

84.Product Assoc Codes 00

85.Catalog Product Y

86.Web Catalog Codes

87.Image Xref

Prod Type	Prod Class	Product Category	Product Subcatg
-----------	------------	------------------	-----------------

88.Thumbnail Xref

001	001		
-----	-----	--	--

89.Datasheet Xref

90.Small Desc for Web

--	--	--	--

Features: Filled with layer of cellulose wadding covered with non-

91.Large Desc for Web

--	--	--	--

--	--	--	--

--	--	--	--

ENTER LINE # TO CHANGE,DELETE TO DELETE,0 TO ACCEPT

XXXXXX

PAGE 3 OF 5

HELP	OK/END	INSERT	LDELETE	PREV PG	NEXT PG	NOTES	INQUIRY	CANCEL	Off	Userfile	Popup
------	--------	--------	---------	---------	---------	-------	---------	--------	-----	----------	-------

Account:DEMO.12 Port:180 Menu:REMOTENET Capture:On

- 1. RemoteNet User Maintenance
- 2. Web Product Type Maintenance
- 3. Web Product Class Maintenance
- 4. Web Product Category Maintenance
- 5. Web Product Subcategory Maintenance
- 6. Web Codes Maintenance
- 7. Web Errors Maintenance

- 8. Assign Customer to a Salesman User
- 9. Web Order Template Maintenance

- 10. Copy MDS Order,Quote,Template for Web
- 11. Update Purchase History Order Templates
- 12. Update Purchase History ShipTo Templates
- 13. Review WEB Orders to be Converted
- 14. Convert WEB Orders to MDS Orders
- 15. Move WEB Order to History
- 16. Move WEB Order to Live

- 17. Reset All User Passwords to Random

- 18. Export RemoteNet Users
- 19. Import Product Codes from EXCEL
- 20. Export Product Codes
- 21. Import Customer Codes from EXCEL
- 22. Export Customer Codes

- 23. Rebuild WEB.CATALOG.XREF File
- 24. Rebuild Other Cross-Ref Files

- 25. Order Template Cataloged Products
- 26. Webpage Timing Report

Enter Selection or END :

OE	CONTACTS	MAINT	DRILL	EXECINQ	REPORTS	CAPT OFF	VIEW	CRM.MENU	VRM.MENU		
HELP	OK/END	INSERT	LDELETE	PREV PG	NEXT PG	INQUIRY	CANCEL				

Account:BASE.12 Port:054 Menu:REMOTENET Capture:On

- 1. RemoteNet User Maintenance
- 2. Web Product Type Maintenance
- 3. Web Product Class Maintenance
- 4. Web Product Category Maintenance
- 5. Web Product Subcategory Maintenance
- 6. Web Codes Maintenance
- 7. Web Errors Maintenance

- 8. Assign Customer to a Salesman User
- 9. Web Order Template Maintenance

- 10. Copy MDS Order,Quote,Template for Web
- 11. Update Purchase History Order Templates
- 12. Update Purchase History ShipTo Templates
- 13. Review WEB Orders to be Converted
- 14. Convert WEB Orders to MDS Orders
- 15. Move WEB Order to History
- 16. Move WEB Order to Live

- 17. Reset All User Passwords to Random

- 18. Export RemoteNet Users
- 19. Import Product Codes from EXCEL
- 20. Export Product Codes
- 21. Import Customer Codes from EXCEL
- 22. Export Customer Codes

- 23. Rebuild WEB.CATALOG.XREF File
- 24. Rebuild Other Cross-Ref Files

- 25. Order Template Cataloged Products
- 26. Webpage Timing Report
- 27. View RemoteNet Reports

Enter Selection or END :

CONTACTS	MAINT	DRILL	EXECINQ	REPORTS	CAPT OFF	VIEW	CRM.MENU	VRM.MENU		
HELP	OK/END	INSERT	LDELETE	PREV PG	NEXT PG	INQUIRY	CANCEL	Off		Popup

Account:BASE.12 Port:054 Menu:REMOTENET Capture:On

- 1. RemoteNet User Maintenance
- 2. Web Product Type Maintenance
- 3. Web Product Class Maintenance
- 4. Web Product Category Maintenance
- 5. Web Product Subcategory Maintenance
- 6. Web Codes Maintenance
- 7. Web Errors Maintenance

- 8. Assign Customer to a Salesman User
- 9. Web Order Template Maintenance

- 10. Copy MDS Order,Quote,Template for Web
- 11. Update Purchase History Order Templates
- 12. Update Purchase History ShipTo Templates
- 13. Review WEB Orders to be Converted
- 14. Convert WEB Orders to MDS Orders
- 15. Move WEB Order to History
- 16. Move WEB Order to Live

- 17. Reset All User Passwords to Random

- 18. Export RemoteNet Users
- 19. Import Product Codes from EXCEL
- 20. Export Product Codes
- 21. Import Customer Codes from EXCEL
- 22. Export Customer Codes

- 23. Rebuild WEB.CATALOG.XREF File
- 24. Rebuild Other Cross-Ref Files

- 25. Order Template Cataloged Products
- 26. Webpage Timing Report
- 27. View RemoteNet Reports

Enter Selection or END :

CONTACTS	MAINT	DRILL	EXECINQ	REPORTS	CAPT OFF	VIEW	CRM.MENU	VRM.MENU		
HELP	OK/END	INSERT	LDELETE	PREV PG	NEXT PG	INQUIRY	CANCEL	Off		Popup

Account:BASE.12 Port:054 Menu:REMOTENET Capture:On

- 1. RemoteNet User Maintenance
- 2. Web Product Type Maintenance
- 3. Web Product Class Maintenance
- 4. Web Product Category Maintenance
- 5. Web Product Subcategory Maintenance
- 6. Web Codes Maintenance
- 7. Web Errors Maintenance

- 8. Assign Customer to a Salesman User
- 9. Web Order Template Maintenance

- 10. Copy MDS Order,Quote,Template for Web
- 11. Update Purchase History Order Templates
- 12. Update Purchase History ShipTo Templates
- 13. Review WEB Orders to be Converted
- 14. Convert WEB Orders to MDS Orders
- 15. Move WEB Order to History
- 16. Move WEB Order to Live

- 17. Reset All User Passwords to Random

- 18. Export RemoteNet Users
- 19. Import Product Codes from EXCEL
- 20. Export Product Codes
- 21. Import Customer Codes from EXCEL
- 22. Export Customer Codes

- 23. Rebuild WEB.CATALOG.XREF File
- 24. Rebuild Other Cross-Ref Files

- 25. Order Template Cataloged Products
- 26. Webpage Timing Report
- 27. View RemoteNet Reports

Enter Selection or END :

CONTACTS	MAINT	DRILL	EXECINQ	REPORTS	CAPT OFF	VIEW	CRM.MENU	VRM.MENU		
HELP	OK/END	INSERT	LDELETE	PREV PG	NEXT PG	INQUIRY	CANCEL	Off		Popup

Account:BASE.12 Port:054 Menu:REMOTENET Capture:On

- 1. RemoteNet User Maintenance
- 2. Web Product Type Maintenance
- 3. Web Product Class Maintenance
- 4. Web Product Category Maintenance
- 5. Web Product Subcategory Maintenance
- 6. Web Codes Maintenance
- 7. Web Errors Maintenance

- 8. Assign Customer to a Salesman User
- 9. Web Order Template Maintenance

- 10. Copy MDS Order,Quote,Template for Web
- 11. Update Purchase History Order Templates
- 12. Update Purchase History ShipTo Templates
- 13. Review WEB Orders to be Converted
- 14. Convert WEB Orders to MDS Orders
- 15. Move WEB Order to History
- 16. Move WEB Order to Live

- 17. Reset All User Passwords to Random

- 18. Export RemoteNet Users
- 19. Import Product Codes from EXCEL
- 20. Export Product Codes
- 21. Import Customer Codes from EXCEL
- 22. Export Customer Codes

- 23. Rebuild WEB.CATALOG.XREF File
- 24. Rebuild Other Cross-Ref Files

- 25. Order Template Cataloged Products
- 26. Webpage Timing Report
- 27. View RemoteNet Reports

Enter Selection or END :

CONTACTS	MAINT	DRILL	EXECINQ	REPORTS	CAPT OFF	VIEW	CRM.MENU	VRM.MENU		
HELP	OK/END	INSERT	LDELETE	PREV PG	NEXT PG	INQUIRY	CANCEL	Off		Popup

RemoteNet User Maintenance

RemoteNet User ID MR.X

Last Updated Time

- 1.Password
- 2.Customer No.
- 3.Salutation
- 4.First Name
- 5.Last Name
- 6.Title
- 7.Department Name
- 8.Telephone#
- 9.Fax Number
- 10.Email Address
- 11.Default Co. No.
- 12.Default Ship-To
- 13.Default Dept No.
- 14.Default Warehouse
- 15.Salesman Flag
- 16.Salesman No.
- 17.Cash Customer Flag
- 18.Show Master AR Info
- 19.Show Credit Cards

MR.X not on file, Create it (Y/N) Y

HELP	OK/END	INSERT	LDELETE	PREV PG	NEXT PG	INQUIRY	CANCEL				
------	--------	--------	---------	---------	---------	---------	--------	--	--	--	--



RemoteNet User Maintenance

RemoteNet User ID DEMO Last Updated 01/12/09 Time 03:11:07pm

1.Password DEMO

2.Customer No. UMC UNIVERSITY MEDICAL CENTER

3.Salutation Mr

4.First Name Demo

5.Last Name Customer

6.Title

7.Department Name

8.Telephone#

9.Fax Number

10.Email Address sales@tshinc.com

11.Default Co. No. 01 TSH Medical Company

12.Default Ship-To

13.Default Dept No.

14.Default Warehouse 001 NEW YORK, NY

15.Salesman Flag N

16.Salesman No.

17.Cash Customer Flag

18.Show Master AR Info

19.Show Credit Cards

ENTER LINE # TO CHANGE,DELETE TO DELETE,0 TO ACCEPT

XXXXXX

PAGE 1 OF 2



RemoteNet User Maintenance

RemoteNet User ID DEMO Last Updated 01/12/09 Time 03:11:07pm

1.Password DEMO

2.Customer No. UMC UNIVERSITY MEDICAL CENTER

3.Salutation Mr

4.First Name Demo

5.Last Name Customer

6.Title

7.Department Name

8.Telephone#

9.Fax Number

10.Email Address sales@tshinc.com

11.Default Co. No. 01 TSH Medical Company

12.Default Ship-To

13.Default Dept No.

14.Default Warehouse 001 NEW YORK, NY

15.Salesman Flag N

16.Salesman No.

17.Cash Customer Flag

18.Show Master AR Info

19.Show Credit Cards

ENTER LINE # TO CHANGE,DELETE TO DELETE,0 TO ACCEPT

XXXXXX

PAGE 1 OF 2



RemoteNet User Maintenance

RemoteNet User ID	DEMO	Last Updated	01/12/09
		Time	03:11:07pm
1.Password	DEMO		
2.Customer No.	UMC	UNIVERSITY MEDICAL CENTER	
3.Salutation	Mr		
4.First Name	Demo		
5.Last Name	Customer		
6.Title			
7.Department Name	Purchasing		
8.Telephone#			
9.Fax Number			
10.Email Address	sales@tshinc.com		
11.Default Co. No.	01	TSH Medical Company	
12.Default Ship-To	R	SAME AS CUSTOMER	
13.Default Dept No.	001		
14.Default Warehouse	001	NEW YORK, NY	
15.Salesman Flag	N		
16.Salesman No.	001	SY FERTIG	
17.Cash Customer Flag	N		
18.Show Master AR Info	Y		
19.Show Credit Cards	N		

ENTER LINE # TO CHANGE,DELETE TO DELETE,0 TO ACCEPT

XXXXXX

PAGE 1 OF 2

HELP	OK/END	INSERT	LDELETE	PREV PG	NEXT PG	INQUIRY	CANCEL				
------	--------	--------	---------	---------	---------	---------	--------	--	--	--	--

RemoteNet User Maintenance

RemoteNet User ID	DEMO	User Capabilities	
20.Administative User	<input checked="" type="checkbox"/>	32.Inventory Inquiry	<input checked="" type="checkbox"/>
21.Max Order Amt	<input type="text" value="0.00"/>	33.Open Order Inquiry	<input checked="" type="checkbox"/>
22.Approve Orders	<input checked="" type="checkbox"/>	34.Purchase Hist Inquiry	<input checked="" type="checkbox"/>
23.Max Approve Amt	<input type="text" value="0.00"/>	35.Accounts Recv Inquiry	<input checked="" type="checkbox"/>
24.Override Ship Method	<input checked="" type="checkbox"/>	36.Cust/Item Price Inquiry	<input checked="" type="checkbox"/>
25.Default Ship Method	<input type="checkbox"/>	37.Back Order Inquiry	<input checked="" type="checkbox"/>
26.Allowable Ship Methods	<input type="checkbox"/>	38.Product Contract Inquiry	<input checked="" type="checkbox"/>
27.Override Ship-To	<input type="text" value="M"/>	39.Customer Contract Inquiry	<input type="checkbox"/>
28.Create Templates	<input checked="" type="checkbox"/>	40.Web Audit Order Inquiry	<input type="checkbox"/>
29.Delete Templates	<input checked="" type="checkbox"/>	41.Bypass Orders-on-Hold	<input checked="" type="checkbox"/>
30.Order Off Template	<input checked="" type="checkbox"/>	42.Default Items per Page	<input type="text" value="10"/>
31.Allow Quick Order	<input checked="" type="checkbox"/>	43.Current Order Sort	<input type="text" value="1"/>
		44.Template Order Sort	<input type="text" value="2"/>
		45.Product Search Sort	<input type="text" value="1"/>
		46.Product Contract Srch Sort	<input type="text" value="2"/>
		Web Security	
		47.Disclaimer Accepted	<input checked="" type="checkbox"/>
		48.PIN Code	<input type="text"/>
		49.PIN Expiration Date	<input type="text"/>

ENTER LINE # TO CHANGE,DELETE TO DELETE,0 TO ACCEPT XXXXXX

RemoteNet User Maintenance

RemoteNet User ID	DEMO	User Capabilities	
20.Administative User	<input checked="" type="checkbox"/>	32.Inventory Inquiry	<input checked="" type="checkbox"/>
21.Max Order Amt	<input type="text" value="0.00"/>	33.Open Order Inquiry	<input checked="" type="checkbox"/>
22.Approve Orders	<input checked="" type="checkbox"/>	34.Purchase Hist Inquiry	<input checked="" type="checkbox"/>
23.Max Approve Amt	<input type="text" value="0.00"/>	35.Accounts Recv Inquiry	<input checked="" type="checkbox"/>
24.Override Ship Method	<input checked="" type="checkbox"/>	36.Cust/Item Price Inquiry	<input checked="" type="checkbox"/>
25.Default Ship Method	<input type="checkbox"/>	37.Back Order Inquiry	<input checked="" type="checkbox"/>
26.Allowable Ship Methods	<input type="checkbox"/>	38.Product Contract Inquiry	<input checked="" type="checkbox"/>
27.Override Ship-To	<input type="text" value="M"/>	39.Customer Contract Inquiry	<input type="checkbox"/>
28.Create Templates	<input checked="" type="checkbox"/>	40.Web Audit Order Inquiry	<input type="checkbox"/>
29.Delete Templates	<input checked="" type="checkbox"/>	41.Bypass Orders-on-Hold	<input checked="" type="checkbox"/>
30.Order Off Template	<input checked="" type="checkbox"/>	42.Default Items per Page	<input type="text" value="10"/>
31.Allow Quick Order	<input checked="" type="checkbox"/>	43.Current Order Sort	<input type="text" value="1"/>
		44.Template Order Sort	<input type="text" value="2"/>
		45.Product Search Sort	<input type="text" value="1"/>
		46.Product Contract Srch Sort	<input type="text" value="2"/>
		Web Security	
		47.Disclaimer Accepted	<input checked="" type="checkbox"/>
		48.PIN Code	<input type="text"/>
		49.PIN Expiration Date	<input type="text"/>

ENTER LINE # TO CHANGE,DELETE TO DELETE,0 TO ACCEPT XXXXXX

RemoteNet User Maintenance

RemoteNet User ID	DEMO	User Capabilities	
20.Administative User	<input checked="" type="checkbox"/>	32.Inventory Inquiry	<input checked="" type="checkbox"/>
21.Max Order Amt	<input type="text" value="0.00"/>	33.Open Order Inquiry	<input checked="" type="checkbox"/>
22.Approve Orders	<input checked="" type="checkbox"/>	34.Purchase Hist Inquiry	<input checked="" type="checkbox"/>
23.Max Approve Amt	<input type="text" value="0.00"/>	35.Accounts Recv Inquiry	<input checked="" type="checkbox"/>
24.Override Ship Method	<input checked="" type="checkbox"/>	36.Cust/Item Price Inquiry	<input checked="" type="checkbox"/>
25.Default Ship Method	<input type="checkbox"/>	37.Back Order Inquiry	<input checked="" type="checkbox"/>
26.Allowable Ship Methods	<input type="checkbox"/>	38.Product Contract Inquiry	<input checked="" type="checkbox"/>
27.Override Ship-To	<input type="text" value="M"/>	39.Customer Contract Inquiry	<input type="checkbox"/>
28.Create Templates	<input checked="" type="checkbox"/>	40.Web Audit Order Inquiry	<input type="checkbox"/>
29.Delete Templates	<input checked="" type="checkbox"/>	41.Bypass Orders-on-Hold	<input checked="" type="checkbox"/>
30.Order Off Template	<input checked="" type="checkbox"/>	42.Default Items per Page	<input type="text" value="10"/>
31.Allow Quick Order	<input checked="" type="checkbox"/>	43.Current Order Sort	<input type="text" value="1"/>
		44.Template Order Sort	<input type="text" value="2"/>
		45.Product Search Sort	<input type="text" value="1"/>
		46.Product Contract Srch Sort	<input type="text" value="2"/>
		Web Security	
		47.Disclaimer Accepted	<input checked="" type="checkbox"/>
		48.PIN Code	<input type="text"/>
		49.PIN Expiration Date	<input type="text"/>

ENTER LINE # TO CHANGE,DELETE TO DELETE,0 TO ACCEPT XXXXXX

RemoteNet User Maintenance

RemoteNet User ID

User Capabilities

Inquiry List [X]

Settings Help

ACCEPTABLE VALUES :

1	Product Code
2	Mfr Name
3	Mfr Product Code
4	Product Desc
5	Extended Price
6	My Way

Add OK Cancel

20.Admin
21.Max C
22.Appro
23.Max A
24.Overr
25.Defau
26.Allow
27.Overr
28.Creat
29.Delet
30.Order
31.Allow

- 32.Inventory Inquiry
- 33.Open Order Inquiry
- 34.Purchase Hist Inquiry
- 35.Accounts Recv Inquiry
- 36.Cust/Item Price Inquiry
- 37.Back Order Inquiry
- 38.Product Contract Inquiry
- 39.Customer Contract Inquiry
- 40.Web Audit Order Inquiry
- 41.Bypass Orders-on-Hold
- 42.Default Items per Page
- 43.Current Order Sort**
- 44.Template Order Sort
- 45.Product Search Sort
- 46.Product Contract Srch Sort
- Web Security
- 47.Disclaimer Accepted
- 48.PIN Code
- 49.PIN Expiration Date

HELP	OK/END	INSERT	LDELETE	PREV PG	NEXT PG	INQUIRY	CANCEL				
------	--------	--------	---------	---------	---------	---------	--------	--	--	--	--



WEB PRODUCT TYPE MAINTENANCE

WEB PRODUCT TYPE 053

1. DESCRIPTION Apparel

2. TYPE IMAGE apparel.jpg

ENTER LINE # TO CHANGE,DELETE TO DELETE,0 TO ACCEPT

0

HELP	OK/END	INSERT	LDELETE	PREV PG	NEXT PG	INQUIRY	CANCEL				
------	--------	--------	---------	---------	---------	---------	--------	--	--	--	--

WEB PRODUCT CLASS MAINTENANCE

WEB PRODUCT CLASS

007

1.DESCRPTION

Electronic Document Mgmt

2.ADVERTISING IMAGE

dms.gif

3.WEB LINK

<http://hosting.tshinc.com/rn/images/specials.pdf>

4.CLASS IMAGE

ENTER LINE # TO CHANGE,DELETE TO DELETE,0 TO ACCEPT

XXXXXX

HELP

OK/END

INSERT

LDELETE

PREV PG

NEXT PG

INQUIRY

CANCEL

Off

Popup

WEB PRODUCT CLASS MAINTENANCE

WEB PRODUCT CLASS

007

1.DESCRPTION

Electronic Document Mgmt

2.ADVERTISING IMAGE

dms.gif

3.WEB LINK

<http://hosting.tshinc.com/rn/images/specials.pdf>

4.CLASS IMAGE

ENTER LINE # TO CHANGE,DELETE TO DELETE,0 TO ACCEPT XXXXXX

HELP	OKIEND	INSERT	LDELETE	PREV PG	NEXT PG	INQUIRY	CANCEL	Off			Popup
------	--------	--------	---------	---------	---------	---------	--------	-----	--	--	-------

PRODUCT CATEGORY MAINTENANCE

PRODUCT CATEGORY

302019

1.DESCRPTION

PREFABRICATED MEDICAL STRUCTURES

2.PRODUCT CLASS

002 Welch Allyn Products

3.CATEGORY IMAGE

wa.jpg

ENTER LINE # TO CHANGE,DELETE TO DELETE,0 TO ACCEPT

XXXXXX

HELP	OK/END	INSERT	LDELETE	PREV PG	NEXT PG	INQUIRY	CANCEL				
------	--------	--------	---------	---------	---------	---------	--------	--	--	--	--

PRODUCT SUBCATEGORY MAINTENANCE

PRODUCT SUBCATEGORY 421820

1.DESCRPTION MEDICAL EXAM SCOPE BULBS OR LAMPS

2.PRODUCT CATEGORY 391121 OPTICAL LIGHTING

3.SUBCATEGORY IMAGE BULB.JPG

ENTER LINE # TO CHANGE,DELETE TO DELETE,0 TO ACCEPT 0

HELP	OK/END	INSERT	LDELETE	PREV PG	NEXT PG	INQUIRY	CANCEL				
------	--------	--------	---------	---------	---------	---------	--------	--	--	--	--

PRODUCT SUBCATEGORY MAINTENANCE

PRODUCT SUBCATEGORY 421820

1.DESCRPTION MEDICAL EXAM SCOPE BULBS OR LAMPS

2.PRODUCT CATEGORY 391121 OPTICAL LIGHTING

3.SUBCATEGORY IMAGE BULB.JPG

ENTER LINE # TO CHANGE,DELETE TO DELETE,0 TO ACCEPT 0

HELP	OK/END	INSERT	LDELETE	PREV PG	NEXT PG	INQUIRY	CANCEL				
------	--------	--------	---------	---------	---------	---------	--------	--	--	--	--



WEB CODES MAINTENANCE

CODE 2B

1.DESCRPTION

Search Results

2.PRODUCT CLASS

026 LAB DIAG TEST SPECIALITY

ENTER LINE # TO CHANGE,DELETE TO DELETE,0 TO ACCEPT

0

HELP	OK/END	INSERT	LDELETE	PREV PG	NEXT PG	INQUIRY	CANCEL				
------	--------	--------	---------	---------	---------	---------	--------	--	--	--	--

WEB ERRORS MAINTENANCE

ERROR# 023

1.ERROR MESSAGE

Note: Items will be added to the Current Order in the standard Selling Unit of Measure

ENTER LINE # TO CHANGE,DELETE TO DELETE,0 TO ACCEPT

XXXXXX

HELP	OK/END	INSERT	LDELETE	PREV PG	NEXT PG	INQUIRY	CANCEL				
------	--------	--------	---------	---------	---------	---------	--------	--	--	--	--

Salesman No. 001 SY FERTIG
Salesman User ID SLS

1.	GUTMH	GUTTENBURG MUN HOSPITAL	USERX
2.	UMC	UNIVERSITY MEDICAL CENTER	SLS
3.			
4.			
5.			
6.			
7.			
8.			
9.			
10.			
11.			
12.			
13.			
14.			
15.			

Line# to Change, 'ADD' Lines, '0' to Accept, 'ABORT' or 'DELETE' XXXXXX

Salesman No. 001 SY FERTIG
Salesman User ID SLS

1.	GUTMH	GUTTENBURG MUN HOSPITAL	USERX
2.	UMC	UNIVERSITY MEDICAL CENTER	SLS
3.			
4.			
5.			
6.			
7.			
8.			
9.			
10.			
11.			
12.			
13.			
14.			
15.			

Line# to Change, 'ADD' Lines, '0' to Accept, 'ABORT' or 'DELETE' XXXXXX

RemoteNet Order Template Maintenance

Customer # UMC

Last Updated

Template ID XXXXXXXXXXXXXXXXXXXXXXXXXXXXXXX

Time

1. Description

2. Product #

Product Description M/C Temp Qty U/M

1	
2	
3	
4	
5	
6	
7	
8	
9	
10	
11	
12	
13	
14	
15	

Inquiry List

Settings Help

RemoteNet Template Lookup

Template ID	Description
SM Products	
Demo Items	
Diabetic Supplies	
PO# ESS1054	
Purchasing history	Purchasing history: SALES.1 -
Tuesday - Order List	

Add OK Cancel

RemoteNet Order Template Maintenance

Customer # UMC Last Updated 05/01/03
 Template ID Demo Items Time 10:33:01am

1. Description Items for customer demonstrations

2. Product #	Product Description	M/C	Temp Qty	U/M
1	BD329431 SYR INSULIN.3CC 29X1/2"		2	BX
2	BD329466 29GX1/2 ULTRA FINE .5CC		1	BX
3	WA22820 2.5v POCKET OTOSCOPE		1	BX
4				
5				
6				
7				
8				
9				
10				
11				
12				
13				
14				
15				

Line# to Change, 'ADD' Lines, '0' to Accept, 'ABORT' or 'DELETE' : XXXXXX

Copy MDS Template for RemoteNet Use

MDS Order	Template	Template Description
1.Company#	01	GLOVES TO BUY
2.Template#	GLOVES	
3.MDS Order#		
4.MDS Quote#		

Inquiry List

Settings Help

RemoteNet Template Lookup	Template ID	Description
GLOVES	GLOVES TO BUY	

Add OK Cancel

RemoteNet	Order	Template
5.Customer #	UMC	XXXXXXXXXXXXXXXXXXXXXXXXXXXX
6.Template Name		

Inquiry List

Settings Help

RemoteNet Template Lookup

Template ID	Description
UMC Products	
Items Items	Items for customer demonstration
Diabetic Supplies	Common diabetic supplies
PO# BS81054	
Purchasing history	Purchasing history: SALES.4 -
Tuesday - Order List	

Add OK Cancel

Copy MDS Template for RemoteNet Use

MDS Order Template

1.Company#	01	Template Description
2.Template#	GLOVES	GLOVES TO BUY
3.MDS Order#		
4.MDS Quote#		

RemoteNet Order Template

5.Customer #	UMC
6.Template Name	Gloves History

ENTER LINE # TO CHANGE,DELETE TO DELETE,0 TO ACCEPT XXXXXX

WEB Purchasing History Order Template

Capture:On

1. (A)ll Customers or (L)ist of Customers

L

2. Enter Beginning Purchase Date

01/01/08

3. Enter Ending Purchase Date

01/31/09

Press <RETURN> to Process Report, Line# to Change, or ABORT

XXXXXX

HELP	OK/END	INSERT	LDELETE	PREV PG	NEXT PG	CAPT OFF	INQUIRY	CANCEL				
------	--------	--------	---------	---------	---------	----------	---------	--------	--	--	--	--

WEB Purchasing History ShipTo Template

Capture:On

1. (A)ll Customers or (L)ist of Customers

A

2. Enter Beginning Purchase Date

01/01/09

3. Enter Ending Purchase Date

01/31/09

Press <RETURN> to Process Report, Line# to Change, or ABORT

XXXXXX

HELP	OK/END	INSERT	LDELETE	PREV PG	NEXT PG	CAPT OFF	INQUIRY	CANCEL				
------	--------	--------	---------	---------	---------	----------	---------	--------	--	--	--	--

Review WEB Orders to be Converted

Date: 03/24/09 Time: 11:37am

WEB Login ID	WEB Ord#	WEB Ord Date	WEB Reqd Date	WEB Status	MDS Ord#	MDS Ord Date	MDS Reqd Date	Customer#	Ship To Customer PO	Total Amt
ABC	001498	02/17/09	02/17/09	PN				ABC		\$1,234.68

Special Instructions

Warning Messages

1030	001500	02/18/09	02/27/09	SN	01146038	02/18/09	02/18/09	1030		\$0.00
------	--------	----------	----------	----	----------	----------	----------	------	--	--------

Special Instructions

Warning Messages

Total WEB Orders Processed: 2

Convert WEB Orders to MDS Orders

Capture:On

1. WEB Order#

Range [] to []

2. WEB Order Date

02/01/09

Inquiry List

Settings Help

- WEB Order Options
- WEB Order Range
- Specific WEB Order
- END

Add OK Cancel

Press <RETURN> to Process Report, Line# to Change, or ABORT

xxxxxx

HELP	OK/END	INSERT	LDELETE	PREV PG	NEXT PG	CAPT OFF	INQUIRY	CANCEL				
------	--------	--------	---------	---------	---------	----------	---------	--------	--	--	--	--

Convert WEB Orders to MDS Orders

Capture:On

1. WEB Order#

000090

000090

2. WEB Order Date

01/22/09

01/22/09

Do you wish to skip Web Orders with Status of "SN" ?

N

HELP	OK/END	INSERT	LDELETE	PREV PG	NEXT PG	CAPT OFF	INQUIRY	CANCEL				
------	--------	--------	---------	---------	---------	----------	---------	--------	--	--	--	--

WEB Orders Converted to MDS Orders

Date: 03/24/09 Time: 11:47am

WEB Login ID	WEB Ord#	WEB Ord Date	WEB Reqd Date	MDS Ord#	MDS Ord Date	MDS Reqd Date	Customer#	Ship To Customer PO	Total Amt
ABC	001498	02/17/09	02/17/09	01146178	03/24/09	03/24/09	ABC		\$1,234.68

Special Instructions

Warning Messages

1030	001500	02/18/09	02/27/09	01146038	02/18/09	02/18/09	1030		\$0.00
				01146177	03/24/09	03/24/09			

Special Instructions

Warning Messages

Total WEB Orders Processed: 2

Delete WEB Orders

Capture:On

1. WEB Order#

000090

000090

Inquiry List

Settings Help

- WEB Order Options
- All WEB Orders
- WEB Order Range
- Specific WEB Order
- END

Add OK Cancel

Press <RETURN> to Process Report, Line# to Change, or ABORT

xxxxxx

HELP	OK/END	INSERT	LDELETE	PREV PG	NEXT PG	CAPT OFF	INQUIRY	CANCEL				
------	--------	--------	---------	---------	---------	----------	---------	--------	--	--	--	--

Restore WEB Orders

Capture:On

1. WEB Order#

000090

000090

Inquiry List

Settings Help

- WEB Order Options
- WEB Order Range
- Specific WEB Order
- END

Add OK Cancel

Press <RETURN> to Process Report, Line# to Change, or ABORT

XXXXXX

HELP	OK/END	INSERT	LDELETE	PREV PG	NEXT PG	CAPT OFF	INQUIRY	CANCEL				
------	--------	--------	---------	---------	---------	----------	---------	--------	--	--	--	--

Reset all Web User Passwords to Random

This process will reset all User Passwords to a random value.
Enter Password to continue or "END"

XXXXXXXXXXXXXXXXXX

HELP	OK/END	INSERT	LDELETE	PREV PG	NEXT PG	INQUIRY	CANCEL				
------	--------	--------	---------	---------	---------	---------	--------	--	--	--	--

Export RemoteNet Users

1.Enter Output Text File Name in tmp or "END"

RUSER0209

Enter Line# to Change, 0 to Accept, or Abort:

XXXXXX

HELP	OK/END	INSERT	LDELETE	PREV PG	NEXT PG	INQUIRY	CANCEL				
------	--------	--------	---------	---------	---------	---------	--------	--	--	--	--

Import Product Codes Data

1.Enter Input Text File Name in tmp or "END"

ProdCodes0209

Enter Line# to Change, 0 to Accept, or Abort:

0

HELP	OK/END	INSERT	LDELETE	PREV PG	NEXT PG	INQUIRY	CANCEL				
------	--------	--------	---------	---------	---------	---------	--------	--	--	--	--

Export Product Codes Data

1.Enter Output Text File Name in tmp or "END"

prods0209

Enter Line# to Change, 0 to Accept, or Abort:

0

HELP	OK/END	INSERT	LDELETE	PREV PG	NEXT PG	INQUIRY	CANCEL				
------	--------	--------	---------	---------	---------	---------	--------	--	--	--	--

Import Customer Codes Data

1.Enter Input Text File Name in tmp or "END"

CUSTIN0209

Enter Line# to Change, 0 to Accept, or Abort:

0

HELP	OK/END	INSERT	LDELETE	PREV PG	NEXT PG	INQUIRY	CANCEL				
------	--------	--------	---------	---------	---------	---------	--------	--	--	--	--

Export Customer Codes Data

1.Enter Output Text File Name in tmp or "END"

CUST0209

Enter Line# to Change, 0 to Accept, or Abort:

0

HELP	OK/END	INSERT	LDELETE	PREV PG	NEXT PG	INQUIRY	CANCEL				
------	--------	--------	---------	---------	---------	---------	--------	--	--	--	--

Rebuild Catalog Cross-Reference

This process will clear the WEB.CATALOG.XREF file
and rebuild it from the Product Master File.

Press <ENTER> to continue or "END"

XXXXXX

HELP	OK/END	INSERT	LDELETE	PREV PG	NEXT PG	INQUIRY	CANCEL				
------	--------	--------	---------	---------	---------	---------	--------	--	--	--	--

Account:1000 DEMO.12 Port:000 Menu:REMOTENET.REBUILD Capture:On

- Rebuild
- RemoteNet
- Cross-Reference
- Files

- 1. Temporary Orders (TEMP.ORD.XREF)
- 2. WEB Orders (WEB.ORDER.XREF)
- 3. Templates (CUST.TEMP.XREF)
- 4. End Users (WEB.CUST.XREF)
- 5. Salesman (WEB.CUST.SALESMAN.XREF)
- 6. Duns Number (DUNS.XREF)

Enter Selection or END :

OE	CONTACTS	MAINT	DRILL	EXECINQ	REPORTS	CAPT OFF	VIEW	CRM.MENU	VRM.MENU		
HELP	OK/END	INSERT	LDELETE	PREV PG	NEXT PG	INQUIRY	CANCEL				

Rebuild Temporary Orders Cross-Reference

This process will clear the TEMP.ORD.XREF file
and rebuild it from the Temporary Orders file.

Press <ENTER> to continue or "END"

XXXXXX

HELP	OK/END	INSERT	LDELETE	PREV PG	NEXT PG	INQUIRY	CANCEL				
------	--------	--------	---------	---------	---------	---------	--------	--	--	--	--



Rebuild WEB Orders Cross-Reference

This process will clear the WEB.ORDER.XREF file
and rebuild it from the Web Orders file.

Press <ENTER> to continue or "END"

XXXXXX

HELP	OK/END	INSERT	LDELETE	PREV PG	NEXT PG	INQUIRY	CANCEL						
------	--------	--------	---------	---------	---------	---------	--------	--	--	--	--	--	--



Rebuild Customer Templates Cross-Reference

This process will clear the CUST.TEMP.XREF file and rebuild it from the Customer Templates file.

Press <ENTER> to continue or "END"

XXXXX

HELP	OK/END	INSERT	LDELETE	PREV PG	NEXT PG	INQUIRY	CANCEL				
------	--------	--------	---------	---------	---------	---------	--------	--	--	--	--



Rebuild End Users Cross-Reference

This process will clear the WEB.CUST.XREF file
and rebuild it from the End User database.

Press <ENTER> to continue or "END"

XXXXXX

HELP	OK/END	INSERT	LDELETE	PREV PG	NEXT PG	INQUIRY	CANCEL				
------	--------	--------	---------	---------	---------	---------	--------	--	--	--	--



Rebuild WEB Salesman Cross-Reference

This process will clear the WEB.CUST.SALESMAN.XREF file and rebuild it for each End User assigned to a customer using the Salesman# assigned to that Customer.

Press <ENTER> to continue or "END"

XXXXX

HELP	OK/END	INSERT	LDELETE	PREV PG	NEXT PG	INQUIRY	CANCEL				
------	--------	--------	---------	---------	---------	---------	--------	--	--	--	--



Rebuild Duns Number Cross-Reference

This process will clear the DUNS.XREF file and rebuild it from the Customer Master file for records with a Duns Number. This Cross-Ref file is used by RemoteNet E-Procurement procedures.

Press <ENTER> to continue or "END"

XXXXX

HELP	OK/END	INSERT	LDELETE	PREV PG	NEXT PG	INQUIRY	CANCEL				
------	--------	--------	---------	---------	---------	---------	--------	--	--	--	--

WEB Ord#	Date	PageID	Page Description	Start Time	Stop Time	Elapsed
001237	01/28/2008	OE	Order Entry Hdr	12:18:39pm	12:18:40pm	00:00:01
001237	01/28/2008	CO	Current Order	12:18:45pm	12:18:47pm	00:00:02
001237	01/28/2008	CL	Order Template	12:18:58pm	12:19:00pm	00:00:02
001237	01/28/2008	AO	Add to Order	12:19:45pm	12:19:48pm	00:00:03
001237	01/28/2008	CO	Current Order	12:24:52pm	12:24:55pm	00:00:03
001237	01/28/2008	AO	Add to Order	12:25:49pm	12:25:51pm	00:00:02
001237	01/28/2008	CL	Order Template	12:26:44pm	12:26:47pm	00:00:03
001237	01/28/2008	AO	Add to Order	12:41:29pm	12:41:31pm	00:00:02
001237	01/28/2008	CL	Order Template	12:55:25pm	12:55:27pm	00:00:02
001237	01/28/2008	AO	Add to Order	12:56:19pm	12:56:21pm	00:00:02
001237	01/28/2008	CL	Order Template	12:56:37pm	12:56:40pm	00:00:03
001237	01/28/2008	AO	Add to Order	01:05:58pm	01:06:00pm	00:00:02
001237	01/28/2008	CL	Order Template	01:06:11pm	01:06:13pm	00:00:02
001237	01/28/2008	AO	Add to Order	01:13:55pm	01:13:57pm	00:00:02
001237	01/28/2008	CL	Order Template	01:14:10pm	01:14:13pm	00:00:03
001237	01/28/2008	AO	Add to Order	01:34:43pm	01:34:46pm	00:00:03
001237	01/28/2008	DOM		01:35:08pm	01:35:09pm	00:00:01
001237	01/28/2008	DO	Delete Order	01:35:13pm	01:35:14pm	00:00:01
001238	01/24/2008	OOH	Orders on Hold		12:41:09pm	
001238	01/24/2008	OE	Order Entry Hdr	12:42:18pm	12:42:19pm	00:00:01
001238	01/24/2008	PS	Product Search	12:42:25pm	12:42:28pm	00:00:03
001238	01/24/2008	SR	Search Results	12:42:49pm		
001238	01/24/2008	PS	Product Search		12:42:53pm	
001238	01/24/2008	SR	Search Results	12:43:07pm		
001238	01/24/2008	PS	Product Search		12:43:10pm	
001238	01/24/2008	SR	Search Results	12:43:22pm	12:43:28pm	00:00:06
001238	01/24/2008	PI	Product Info	12:47:48pm	12:47:49pm	00:00:01
001238	01/24/2008	PS	Product Search	12:48:36pm	12:48:38pm	00:00:02
001238	01/24/2008	AI		12:48:49pm	12:48:50pm	00:00:01
001238	01/24/2008	CO	Current Order	12:49:06pm	12:49:08pm	00:00:02
001238	01/24/2008	SR	Search Results	12:49:47pm	12:49:50pm	00:00:03
001239	01/24/2008	OOH	Orders on Hold		01:39:40pm	
001239	01/24/2008	OE	Order Entry Hdr	01:40:07pm	01:40:09pm	00:00:02
001239	01/24/2008	CL	Order Template	01:40:22pm	01:40:29pm	00:00:07
001239	01/24/2008	PS	Product Search	01:40:38pm	01:40:40pm	00:00:02
001239	01/24/2008	SR	Search Results	01:40:50pm	01:40:52pm	00:00:02
001239	01/24/2008	AO	Add to Order	01:41:08pm	01:41:10pm	00:00:02
001239	01/24/2008	ST	Save as Templ	01:41:54pm	01:41:55pm	00:00:01
001239	01/24/2008	CO	Current Order	01:41:59pm	01:42:01pm	00:00:02
001239	01/24/2008	CL	Order Template	01:42:10pm	01:42:12pm	00:00:02
001239	01/24/2008	CO	Current Order	01:42:36pm	01:42:38pm	00:00:02
001239	01/24/2008	PS	Product Search	01:44:12pm	01:44:14pm	00:00:02
001239	01/24/2008	SR	Search Results	01:44:20pm	01:44:24pm	00:00:04
001239	01/24/2008	AO	Add to Order	01:51:53pm	01:51:55pm	00:00:02
001239	01/24/2008	CL	Order Template	02:00:34pm	02:00:36pm	00:00:02
001239	01/24/2008	AO	Add to Order	02:00:48pm	02:00:50pm	00:00:02

User : gms Archive :

Count 4

#	Report Name	Date	Time	Size	St
1.	<Webpage Timing Report>	03/24/09	02:53:41pm	58359	
2.	Order Template Cataloged Products	03/24/09	02:46:00pm	57708	
3.	WEB.Orders.Converted.to.MDS.Orders	03/24/09	11:47:43am	714	
4.	Review.WEB.Orders.to.be.Converted	03/24/09	11:37:13am	665	
5.					
6.					
7.					
8.					
9.					
10.					
11.					
12.					
13.					
14.					
15.					

Enter Line# to View, DELETE to Delete or END XXXXXXXXXXXXX

Select	Unselect	Print	Comm/User	Copy	Flat	Fax	E-Mail	pdf / PR			
HELP	OK/END	INSERT	LDELETE	PREV PG	NEXT PG	INQUIRY	CANCEL	Off			Popup

RemoteNet Import/Export Parameter Maint

1.Ln#	Option	Description
1	CUST	Customer Data
2	SHIP.TO	Ship-to Data
3	PROD	Product Data
4	ORDER	Order Basic Data
5	ORDER.DTL	Order Detail Data
6	RELEASE	Shipment Basic Data
7	RELEASE.DTL	Shipment Detail Data
8	RELEASE.TRK	Tracking Detail Data
9	ORD.REMOVE	Remove Orders
10	PRICE.1	Customer Pricing Data
11	SALES.4	Sales Data
12	SALES.8	Ship-To Sales Data
13	PROD.CLS	Product Class Data
14	MANUFACT	Manufacturer Data
15	TEMPLATE	Custom Product List Data
16	IMAGE	Product Image Data
17	CONT.HDR	Contract Header Data
18	CONT.DTL	Contract Detail Data

Enter Line# to Change, 0 to Accept, 'ADD' to Add Option

XXXXX

PAGE 1 OF 6

HELP	OK.END	INSERT	LDELETE	PREV PG	NEXT PG	INQUIRY	CANCEL	Off			Popup
------	--------	--------	---------	---------	---------	---------	--------	-----	--	--	-------

How do Web Orders Become MDS Orders?

- Manual Conversion Options
 - Users run the conversion from the menu
- Automatic Conversion Options
 - Web orders are submitted and converted without user interaction
 - Convert directly to MDS Order, no hold
 - Convert to MDS Order on Manual Hold
 - Convert to Sales Quote



Where to Get More Information

- Additional Training Sessions
- Documentation CD
- Support Call 973-777-8050

- Please send any comments or questions on this guide to our documentation department at documents@tshinc.com.