

Solution Details

[<< Return To Search Results](#) [Browse Solutions](#) [Solution Search](#)

ID: UCC-1547
Publish Date: 2012-06-22
Last Updated: 2013-04-11
Product Version/s:
Title: How to generate an inner join / left outer join with Crystal Reports 2011 using a UV ODBC RDO connection

Vote Count: 0 

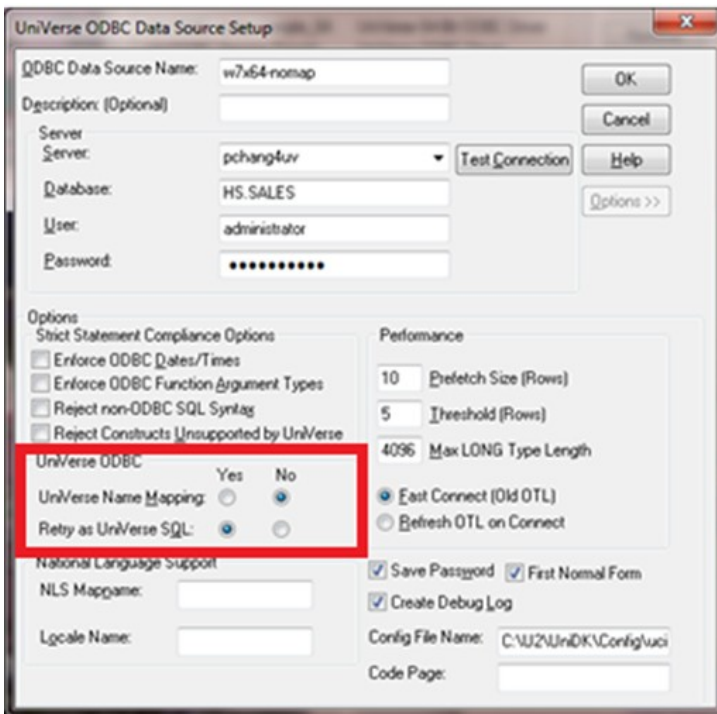
 PROMOTE  ADD COMMENT
 WATCH

Abstract

The syntax used by Crystal Reports 2011 (32-bit) for an INNER JOIN /LEFT OUTER JOIN is compatible with the 32-bit UV ODBC 5.140.00.7463 (2011 Nov) driver using an RDO connection. This Tech Note provides step-by-step instructions for the UniVerse Name Mapping option of UV ODBC with Crystal Reports to query UniVerse using an INNER/LEFT OUTER JOIN.

More Information

After creating a UCI data source using the UCI Editor, create the ODBC DSN using the ODBC Data Source Administrator. Click Options and set Universe Name Mapping to No.



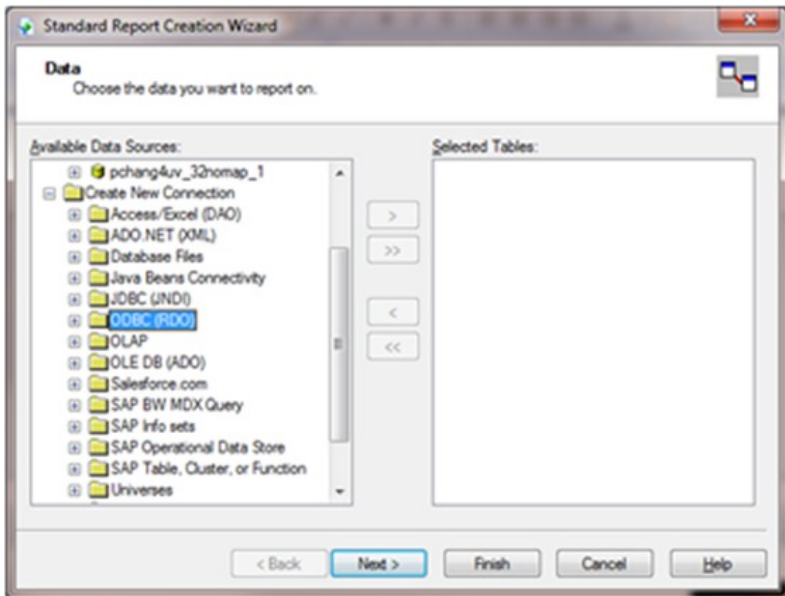
Please see Tech Note UCC-1172 for information on setting up a UniVerse ODBC connection.

Crystal Reports 2011 supports an ODBC (RDO) connection when UniVerse Name Mapping is No.

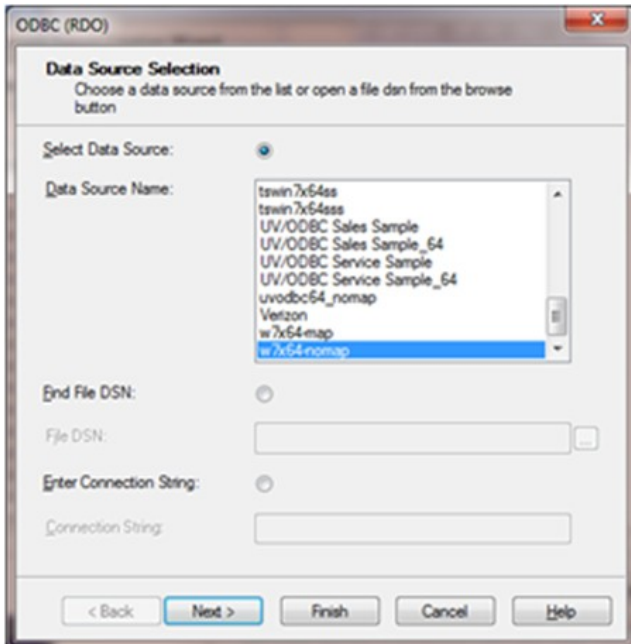
Example

The following example demonstrates how to use Crystal Reports 2011 to generate INNER /LEFT OUTER JOIN reports using the CUSTOMER file in the HS.SALES account.

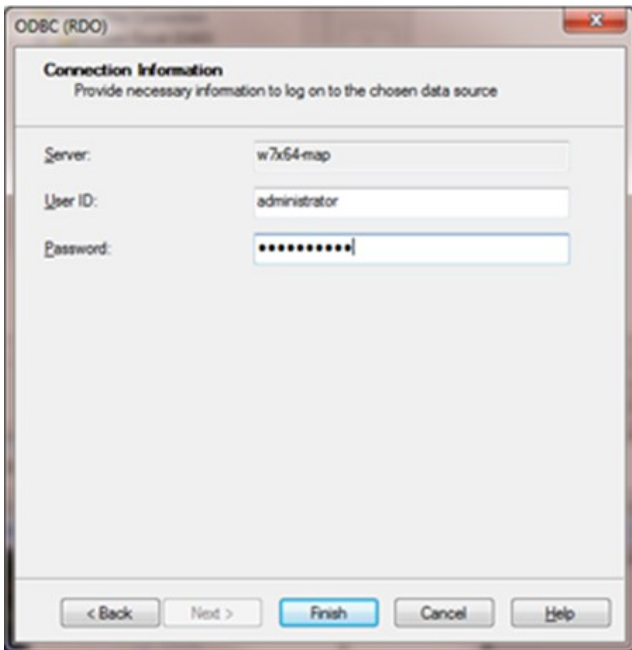
1. Choose the Standard Report Creation Wizard on the Crystal Reports Database menu to create a new connection. Select 'ODBC (RDO)' under Available Data Sources. After clicking the 'Finish' button a list of all of the available ODBC DSNs is shown.



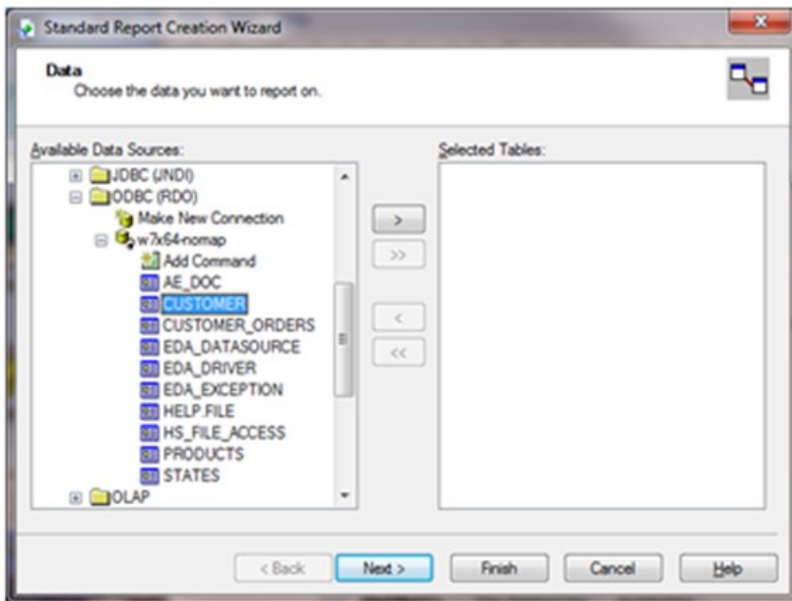
2. Choose a UniVerse ODBC DSN in which the UniVerse Name Mapping is set of No.



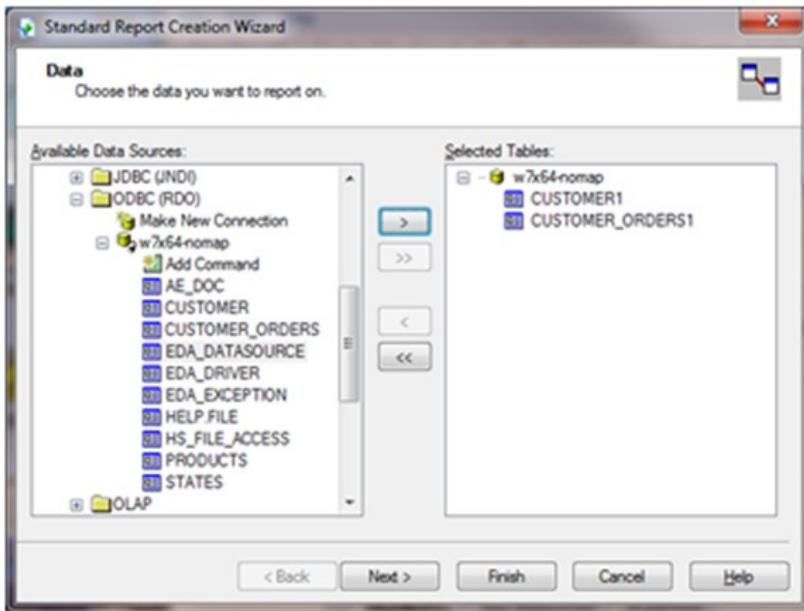
3. Provide the UniVerse login information.



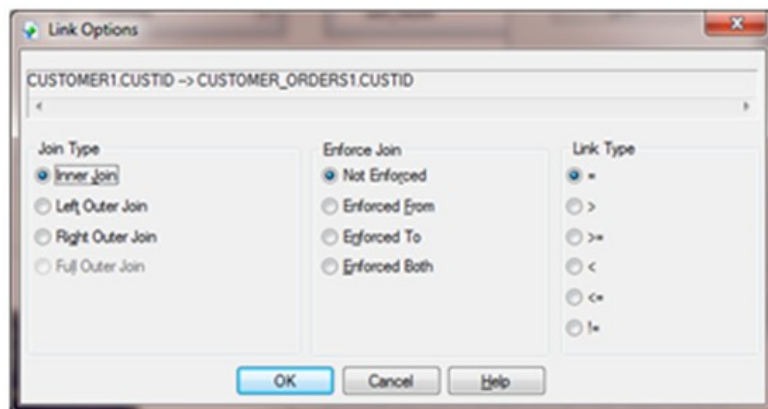
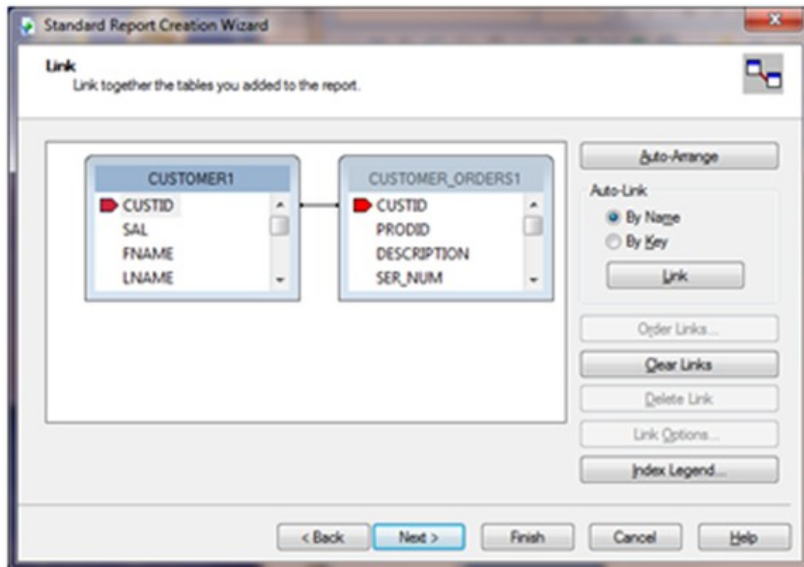
4. Select Finish. The available tables and views in the account will be shown.

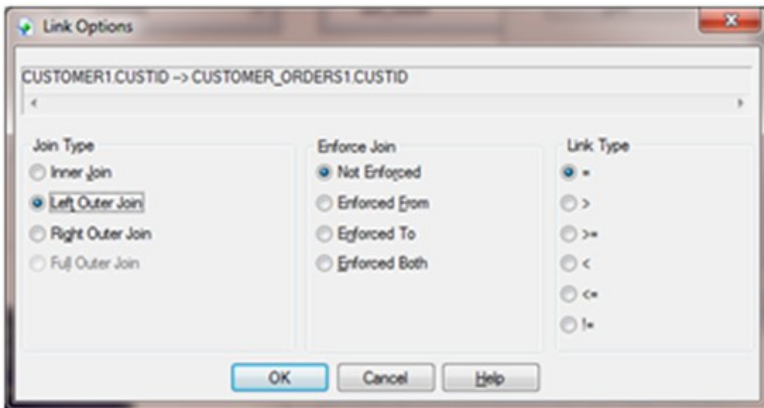


5. Select "CUSTOMER" and "CUSTOMER_ORDERS" using the ">" button.

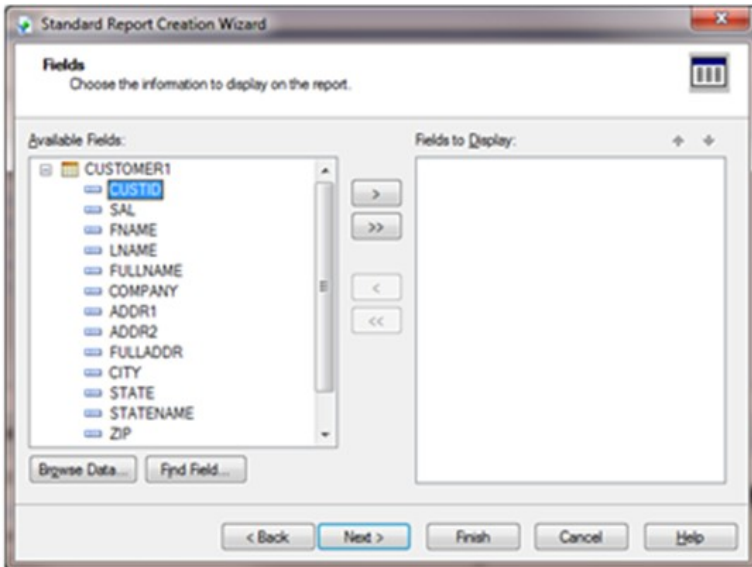


6. Use the default INNER JOIN or LEFT OUTER JOIN on the LINK option. Click on the "LINK" button to choose the INNER or LEFT OUTER JOIN option.

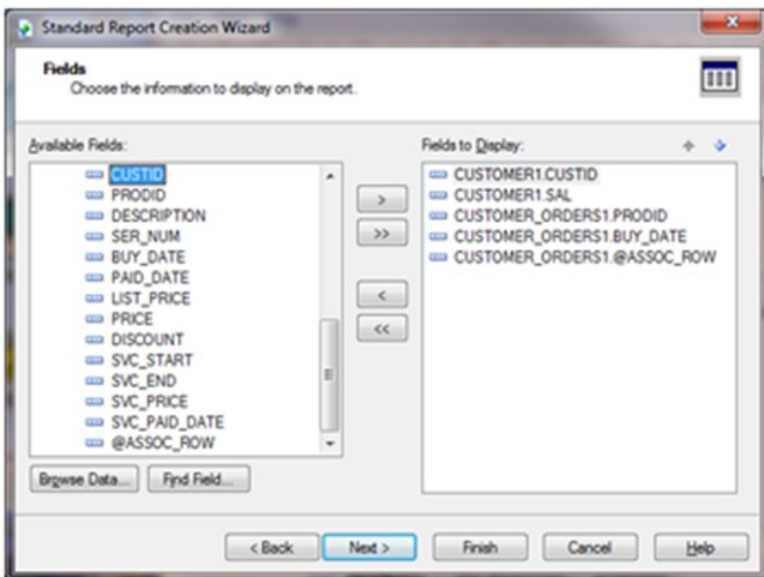




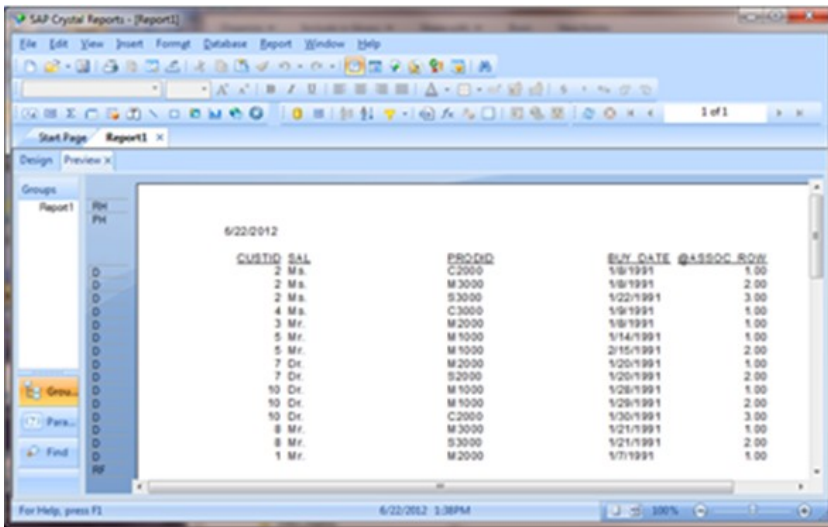
7. Click the "Next" button to select the display fields.



8. Select the CUSTID and SAL fields from the CUSTOMER1 table, select the PROPID, BUY_DATE and @ASSOC_ROW fields from the CUSTOMER_ORDERS1 table.



9. Skip the Grouping, Record Selection, Template dialogs and click on the "Finish" button. The query results are returned.



Refer to the Crystal Reports 2011 documentation or SAP Support for complete details about how to create an ODBC connection using Crystal Reports 2011.

Note: A syntax error is returned if UniVerse Name Mapping is set to Yes.

Send feedback to u2support@rocketsoftware.com.

Comments

Date	User	Comment
------	------	---------

Related Solutions

Id	Title
UCC-1172	How to set up a UniVerse ODBC connection in Crystal Reports 2008