

# Inventory Quick Count System

From the Systems House, Inc.

Updated: November 2011



# Inventory Quick Count Overview

*Quick and easy way to perform a physical count on a group of items without the extra steps of creating physical tags and entering counts individually.*

*Note: This is not a replacement of the standard physical inventory as it does not offer as many options or review, but can be very helpful for a simple quick count.*

- Three simple steps
  - Create and upload your count list
  - Enter /Update counts into system
  - Update variances and run report

# Inventory Quick Count Menu

demo-df - [mail.tshinc.com-BASE.12-QUICK.COUNT.MENU]

File Edit Settings Reset Tools GUI Standard Functions Special Functions Help

QUICK.COUNT.MENU ON BASE.12

- 1. QUICK COUNT CREATION
- 2. QUICK COUNT ENTRY
- 3. QUICK COUNT INVENTORY REPORT

10:30:51 PM  
April 2011

Sun	Mon	Tue	Wed	Thu	Fri	Sat
27	28	29	30	31	1	2
3	4	5	6	7	8	9
10	11	12	13	14	15	16
17	18	19	20	21	22	23
24	25	26	27	28	29	30
1	2	3	4	5	6	7

Annual Sales by Customer Class

KEY INDICATORS

INDICATOR	DAILY	MONTH	THIS YE	LAST YE	
PRODUCTS BELOW ROP WITH	14				
INVENTORY VALUE	87,099				INQUIRY
SALES/INVOICES - YEARLY					
SALES DOLLARS	\$0	57,128	35,505		\\rs60

TASKS

DATE	TIME	DESCRIPTION	STATUS	TASK
4/25/11	00AM	CALL FOR PRICING CHECK	PAST	00
4/29/11	00AM	UPDATE PRODUCT SELL SHEET...		00

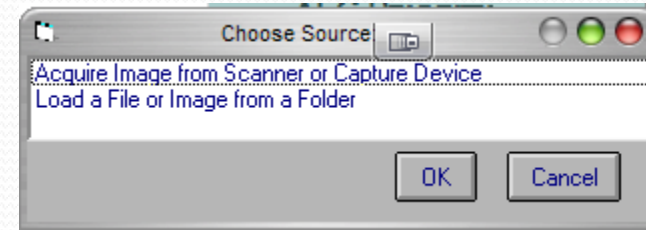
Back Home

HELP	CONTACTS	MAINT	DRILL	EXECINQ	REPORTS	CAPT OFF	VIEW	CRM.MENU	VRM.MENU	POPUP
OK/END	INSERT	LDELETE	PREV PG	NEXT PG	INQUIRY	CANCEL	OFF			



# Upload your Spreadsheet

- Save Excel File as Tab Delimited Text
- Click on Camera to upload and choose file
- Quick Count Number is automatically assigned



A screenshot of the MDSforWindows 8.11.3 application interface. The main window has a menu bar with 'File', 'Edit', 'Settings', 'Reset', 'Tools', 'GUI', 'Standard Functions', 'Special Functions', and 'Help'. The title bar reads 'demo-df - [mail.tshinc.com-BASE.12-QUICK.COUNT.CREATE012\$1]'. The main area is light blue and contains the text '1. TEXT FILE NAME' followed by an input field containing 'QUICK-COUNT-LIST.TXT'. A small camera icon is to the right of the input field. At the bottom left, it says 'ENTER OK TO CREATE QUICK COUNT, CANCEL TO CANCEL'. At the bottom right, there is a yellow box containing 'XXXXXX'. A dialog box titled 'MDSforWindows 8.11.3' is open on the right, displaying the message 'Count # 000001 has been created with 6 lines.' and an 'OK' button.

# Create Reports for Counting

- Optional print/Export
- Shows Current Onhand as well as Original on hand
- Once Updated will Show Counts and Variances

Preview 000014

Warehouse :001

Quick Count Report 04/27/11 22:38:35

A	PROD_NO	PROD_DESC	LOCATION	CURR_OH	UM	ORIG_OH	COUNTED	VAR	LOT_NO	SERIAL
Count #:	000014	Created on:	4/27/2011	10:21:40pm						
E-TPW52		CARDIAC PACING WIRE		0	EA 1					
E-TPW60		TEMP CARDIAC PACING W		0	EA 1					
E-C004D		SILK BLK BRD		1	EA 1		1		1	
E-C053D		SILK BLK BRD		1	EA 1		1		1	
E-C063D		SILK BLK BRD		1	EA 1		1		1	
SUTURE-KIT		ASSORTED TYPE SUTURE		0	EA 1					
E-TPW50		TEMP CARDIAC PACING W		0	EA 1					

# Enter your counts

DEMO.12-TSHPE2 - [tshpe2.tshinc.com-DEMO.12-QUICK.COUNT.ENTRY012S1]

File Edit Settings Reset Tools GUI Standard Functions Special Functions Help

DEMO.12-TSHPE2 - [tshpe2.tshinc.com-DEMO.12-QUICK.COUNT.ENTRY012S1]

### Quick Count Entry

Count ID

1.Ln	Product # CompFlag	Location	Curr Qty	Quantity	Lot Number Serial Number
1	RSCOMP	0100A	1		103
					111
2	RSCOMP	0100A	1		103
					123
3	RSCOMP	0100A	1		103
					143
4	RSCOMP	0100A	1		103
					145
5	RSCOMP	0100A	1		103
					198
6	RSCOMP	0100A	1		103
					199
7					
8					
9					

ENTER LINE # TO CHANGE,DELETE TO DELETE,0 TO ACCEPT

XXXXXX

HELP	OK/END	INSERT	LDELETE	PREV PG	NEXT PG	INQUIRY	CANCEL	Off		Popup
------	--------	--------	---------	---------	---------	---------	--------	-----	--	-------

# Update your Counts

DJF - [mail.tshinc.com-BASE.12-QUICK.COUNT.ENTRY012\$1]

File Edit Settings Reset Tools GUI Standard Functions Special Functions Help

QUICK COUNT ENTRY

COUNT ID 000006

1.LN	PRODUCT # COMPFLAG	LOCATION	CURR QTY	QUANTITY EXP DATE
1	QS	A-777	5	2
2	CURVE	A-777	0	2
3	QS-LOT-SER	A-777	0	1 11/04/11
4				
5				
6				
7				
8				
9				

ENTER Y TO COMPLETE THE COUNT AND ADJUST ALL QUANTITIES.

HELP	OK/END	INSERT	LDELETE	PREV PG	NEXT PG	INQUIRY	CANCEL	OFF
------	--------	--------	---------	---------	---------	---------	--------	-----

ARE YOU SURE YOU WANT TO UPDATE THIS COUNT? (Y/N)

HELP	OK/END	INSERT	LDELETE	PREV PG	NEXT PG	INQUIRY	CANCEL	OFF	POPUP
------	--------	--------	---------	---------	---------	---------	--------	-----	-------

File Edit Settings Reset Tools GUI Standard

COUNT ID 000006

1.LN	PRODUCT # COMPFLAG
1	QS
2	CURVE
3	QS-LOT-SER
4	
5	
6	
7	
8	
9	



# Review Reports for Count

- Optional print/Export
- Shows Current Onhand as well as Original on hand
- Once Updated will Show Counts and Variances

Preview 000014

Warehouse :001

Quick Count Report 04/27/11 22:38:35

A	PROD_NO	PROD_DESC	LOCATION	CURR_OH	UM	ORIG_OH	COUNTED	VAR	LOT_NO	SERIAL
Count #:	000014	Created on:	4/27/2011	10:21:40pm						
E-TPW52		CARDIAC PACING WIRE		0	EA 1					
E-TPW60		TEMP CARDIAC PACING W		0	EA 1					
E-C004D		SILK BLK BRD		1	EA 1		1		1	
E-C053D		SILK BLK BRD		1	EA 1		1		1	
E-C063D		SILK BLK BRD		1	EA 1		1		1	
SUTURE-KIT		ASSORTED TYPE SUTURE		0	EA 1					
E-TPW50		TEMP CARDIAC PACING W		0	EA 1					

# Verify/Review Inventory Audit

- Shows as Inventory Audit Transaction with a code of ADJ for Adjustment

DJF - [mail.tshinc.com-BASE.12-INV.HIST.PROD.INQ010\$1]

File Edit Settings Reset Tools GUI Standard Functions Special Functions Help

INVENTORY TRANSACTION HISTORY BY PRODUCT

PRODUCT# E-C004D SILK BLK BRD

WAREHOUSE OR ALL ALL EOM OH 1105 CUR OH 1106

LN#	CUSTOMER/VENDOR NUMBER CUSTOMER/VENDOR NAME	DATE OPER DS	TNX WHS	RELEASE/REF P/O#/REASCD	QTY SELL ST	PRICE COST	UM GP%
1	N/A	04/27/11 DF	ADJ 001	97	EA	133.47	/ EA
2	N/A	04/27/11 DF	ADJ 001	97	1 EA	133.47	/ EA
3	ETHIC ETHICON	08/27/08 SY1 DS	POR 001	005648 01132530	5 EA	133.47	/ EA
4	BAR BARTST	08/27/08 SY1 DS	INV 001	01145142001	-10 EA EA	166.83 133.47	/ EA 20
5	ETHIC ETHICON	08/27/08 SY1 DS	POR 001	005647 01132529	10 EA	133.47	/ EA
6	N/A	10/25/06	P/I 001		-185 EA	133.47	/ EA
7	N/A	10/25/06	P/I 001		-1000 EA	133.47	/ EA

ENTER 'END' TO EXIT, 'NEXT PG' or 'PREV PG' XXXXXX

DETAIL	HELP	OK/END	INSERT	LDELETE	PREV PG	NEXT PG	INQUIRY	CANCEL	OFF	POPUP
--------	------	--------	--------	---------	---------	---------	---------	--------	-----	-------

# For More Information

- Visit our Website <http://www.tshinc.com>
- Email: Sales@tshinc.com