



Browse Solutions | **Solution Search** |

<< Return To Search Results

Technote ID: UCC-1175

Type: Tech Note

Publish Date: 2011-05-11 21:20

Last Updated: 2011-06-29 17:32

Product

Version/s:

Title: 'Error ID: 29 ... (around ','): Syntax error' when using Crystal Reports 2008 with UVODBC 4.0.5 driver

Vote Count: 0



Abstract

The INNER JOIN/LEFT OUTER JOIN SQL command created by Crystal Reports 2008 when using the UVODBC 4.0.5 driver is incompatible with UniVerse. This is because the syntax used by Crystal Reports conforms to the ODBC 3.0 specification while the UniVerse engine supports the version 2.0 specification.

The following is an example of a SQL command created by Crystal Reports 2008 that fails:

```
SELECT * FROM {oj A, B LEFT OUTER JOIN C ON B.ID = C.ID} WHERE A.ID = B.ID
```

The error reported when the SQL command is not compatible with UniVerse is similar to the following:

```
Failed to retrieve data from the database.
Details: ADO Error Code: 0x80004005
Source: Microsoft OLE DB Provider for ODBC drivers
Description: [Rocket U2][UVODBC][1401233]Error ID: 29 Severity:ERROR Facility:FPSRVERR - Line 1, column 220 (around
","):Syntax Error.
SQL State:S1000
```

This Tech Note explains how to configure Crystal Reports 2008 to create a SQL command using INNER JOIN/LEFT OUTER JOIN that is compatible with UniVerse.

Solution

This example demonstrates how to use the Crystal Reports Standard Report Creation Wizard to create a SQL command containing a LEFT OUTER JOIN that is compatible with UniVerse. For more detailed information on using Crystal Reports, please refer to the Crystal Reports documentation or contact SAP Technical Support.

1. Create a UniVerse file called U2.CUST and add two fields, CATEGORY and TAG.

```
> LIST DICT U2.CUST
Field Name..Type & Field Definition. Conversion Code..Column Heading..Output Format.. Assoc..
@ID.....D....0.....U2.CUST.....10L....S
CATEGORY.....D....1.....Category.....6L....M
TAG.....D....2.....Tag Marks.....12L....M
@SELECT.....PH...@ID CATEGORY TAG
@.....PH...CATEGORY TAG
TAGS.....PH...TAG
```

6 records listed.

2. Insert two records.

```
U2.CUST Category Tag Marks
```

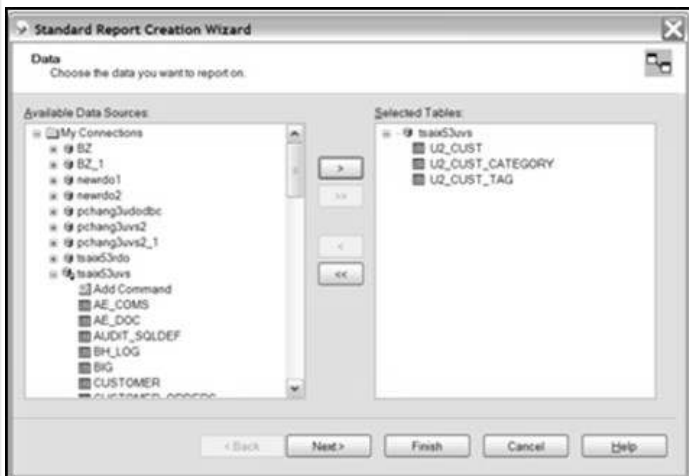
```
222222...AAA...TEST0002
.....TEST0003
111111...AAA...TEST0001
.....TEST0002
.....TEST0003
```

2 records listed.

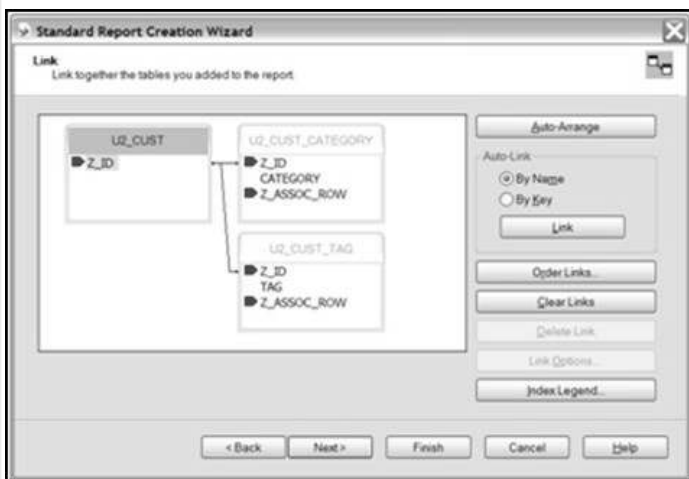
3. Create a Report in Crystal Reports 2008 using a UniVerse ODBC DSN.

Please see Tech Note # UCC-1172 for instructions on how to set up a UniVerse ODBC connection.

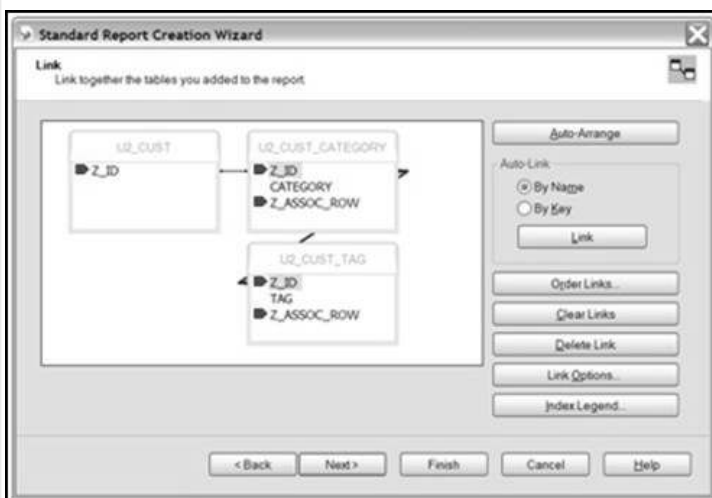
4. Click on the UniVerse ODBC DSN in Crystal Reports 2008 - Standard Report Creation Wizard and select the U2_CUST, U2_CUST_CATEGORY and U2_CUST_TAG tables from Available Data Sources.



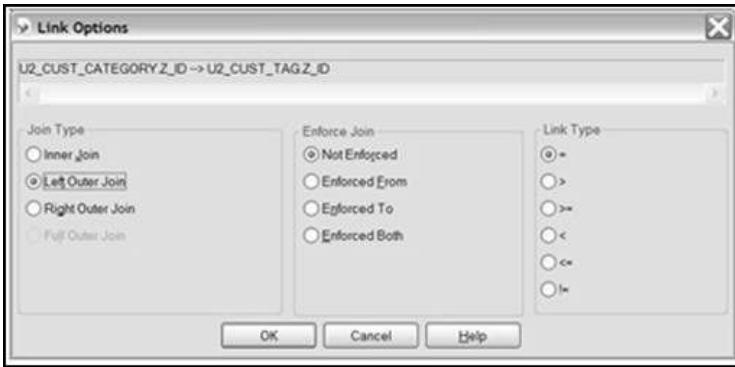
5. Click **Next** to display the default links for the tables.



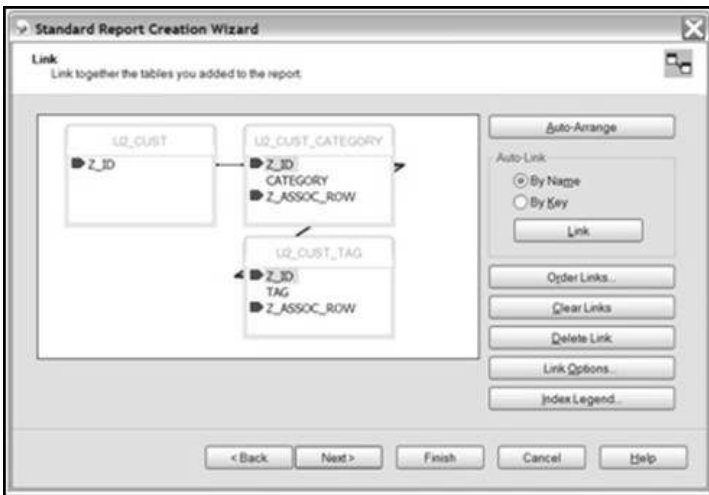
6. Delete the link between the U2_CUST and U2_CUST_TAG tables. Create a new link between the U2_CUST_CATEGORY and U2_CUST_TAG tables, then click **Link Options** or double-click on the blue link line.



7. Change the U2_CUST_CATEGORY.Z_ID -> U2_CUST_TAG.Z_ID Inner Join to **Left Outer Join**.



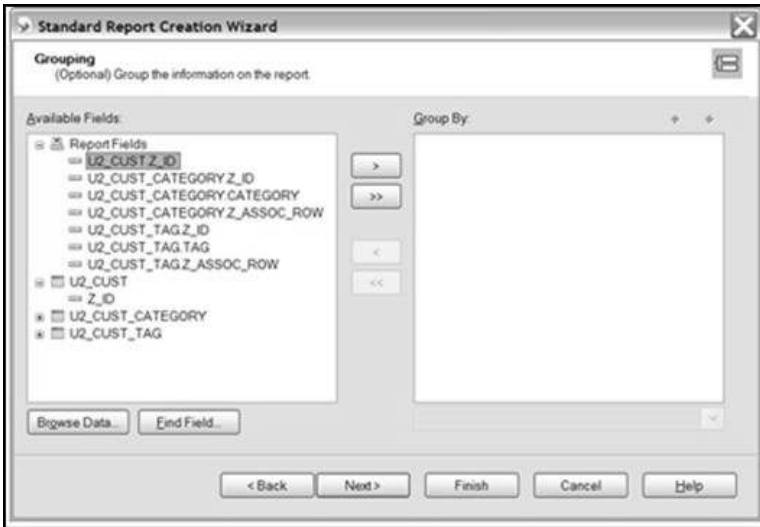
8. Click **OK** to return to the Standard Report Creation Wizard.



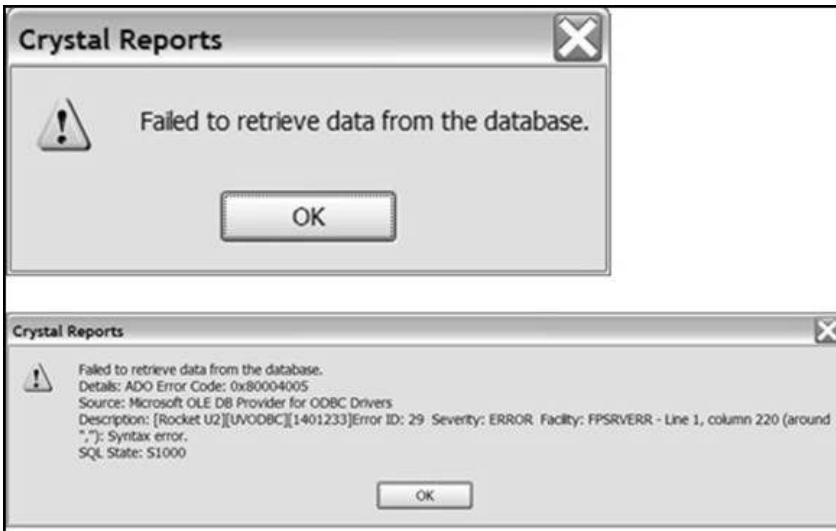
9. Click **Next** to select the fields to be displayed.



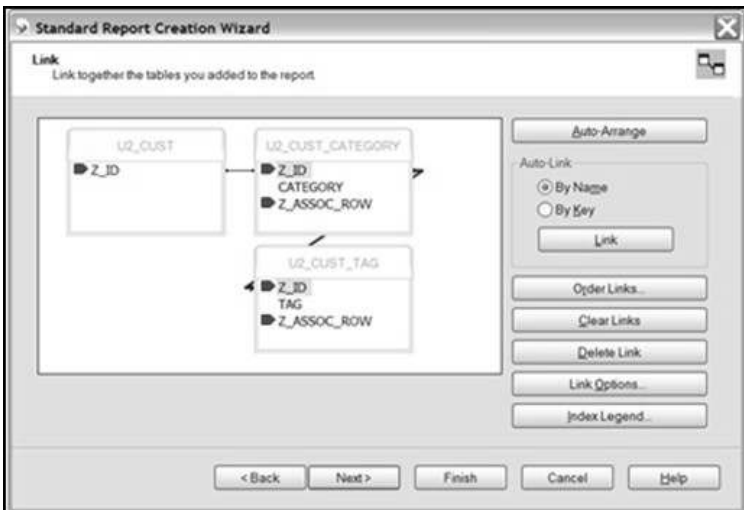
10. Click **Next** without selecting any grouping.



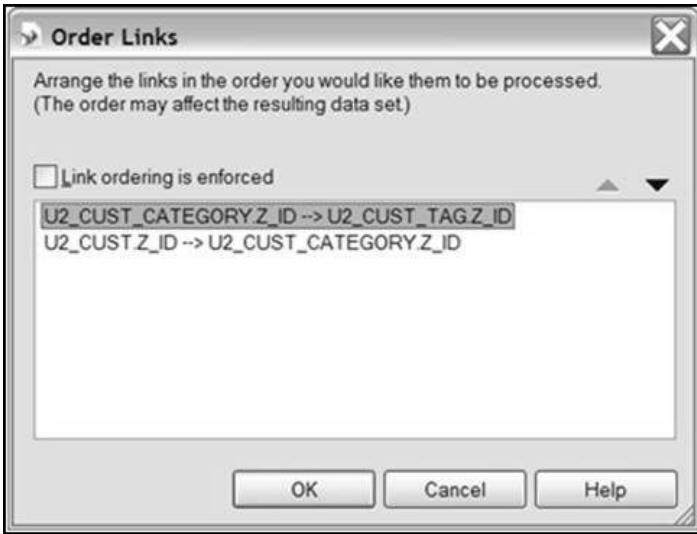
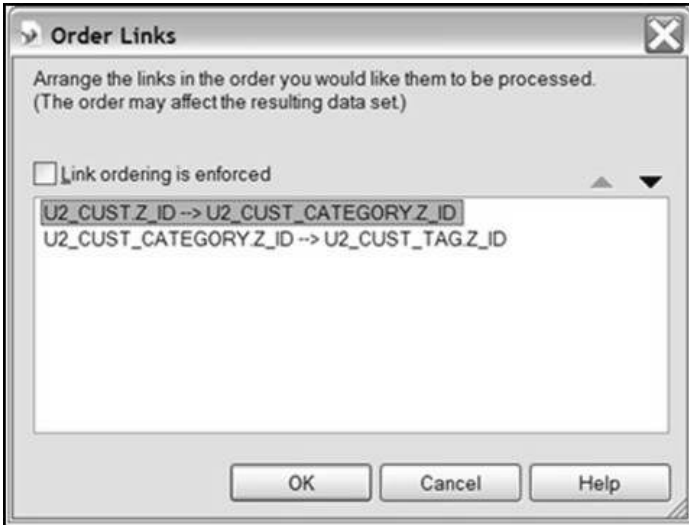
11. Click **Finish** and the syntax error is displayed.



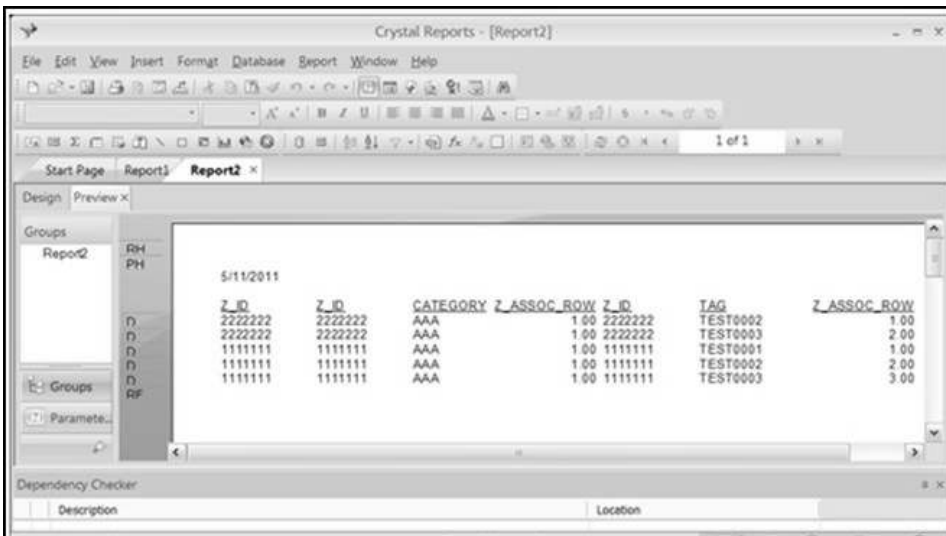
12. Click on **Order Links** to change the link order.



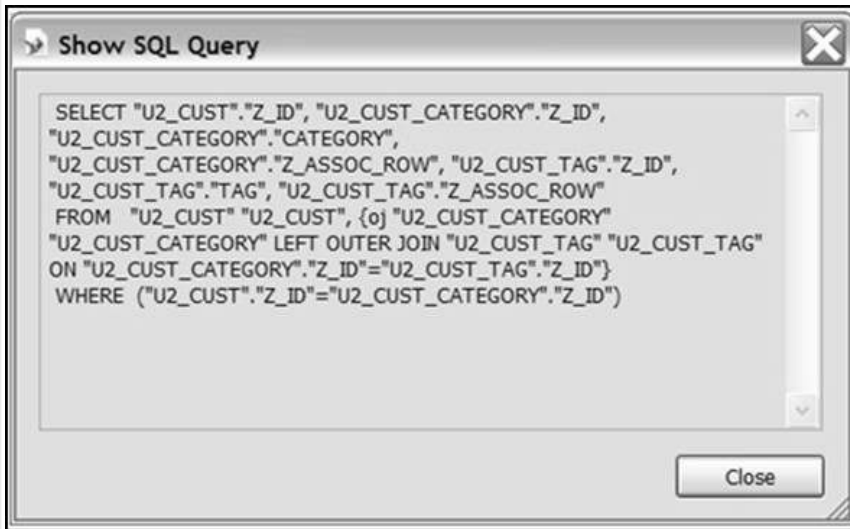
13. Change the first link order to: U2 CUST CATEGORY.Z ID -> U2 CUST TAG.Z ID



14. The results using the correct INNER /LEFT OUTER JOIN are displayed.



15. The following shows the complete SQL command using the Database /Show SQL Query menu option.



Note, to use the UniVerse version 4.0.4, and earlier, ODBC driver with Crystal Reports 2008 to generate the correct INNER JOIN /LEFT OUTER JOIN SQL syntax, a change to the Windows Registry is required. See Technote UCC-1179 for information on making this change.

Send feedback to u2support@rocketsoftware.com.

Comments

Date	User	Comment
------	------	---------