

## MDS Quick User Defined Fields

Overview: This guide will help you understand how to add/modify and update user defined fields in MDS. User defined fields are fields you can add to your master data files specific to your company and database, they can be used for reporting, custom programming, Remotenet Web Pages, and MDS Import/Export utilities. There is no limit to the number of fields you can add, and they allow for different data types depending on your needs, such as date, freeform text etc.

### Step 1. *Setup Parameters and Fields*

Navigate to the Extension Files Setup Menu

The screenshot displays the MDS software interface. The main window is titled "stp-live - [stp.tshinc.com-121-root-STP-EXTENSION.FILE.SETUP-tsh-05052022-14:27:20]". The menu bar includes "File", "Edit", "Settings", "Reset", "Tools", "Mode", "Standard Functions", "Special Functions", "Refresh Dashboard", and "Help". Below the menu bar, there are navigation tabs for "MDS Menu", "Find", and "History". The "MDS Menu" tab is active, showing a list of menu items:

- 1. Custom Master File Extension Definition
- 2. Extension File Setup
- 3. Extension File Field Type Maintenance
- 4. Customer SSS Parameters

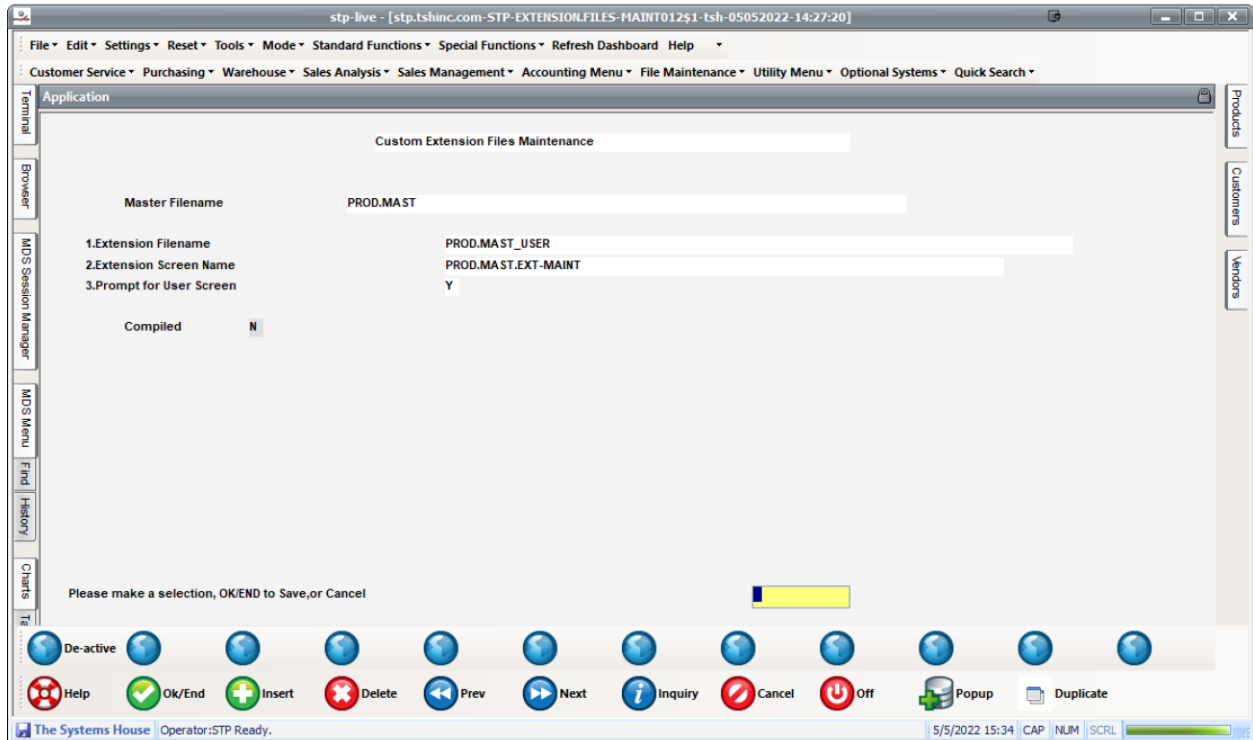
Each item has a star icon and a question mark icon. To the right of the menu, there is a "Shortcuts" section with a list of menu items and their corresponding icons:

- EMS Main Menu
- New Product Master, Detail & Pricing
- Pharma Menu
- DEA Inventory Report
- Excess Product Usage Maintenance

Below the shortcuts, there is a "Charts" section with tabs for "Charts", "Tasks", and "Key Indicators". The "Charts" tab is active, showing a pie chart titled "Sales Dollars By State". The chart shows two segments: 57.2% (red) and 42.8% (green). A legend indicates "NJ" (red) and "NY" (green).

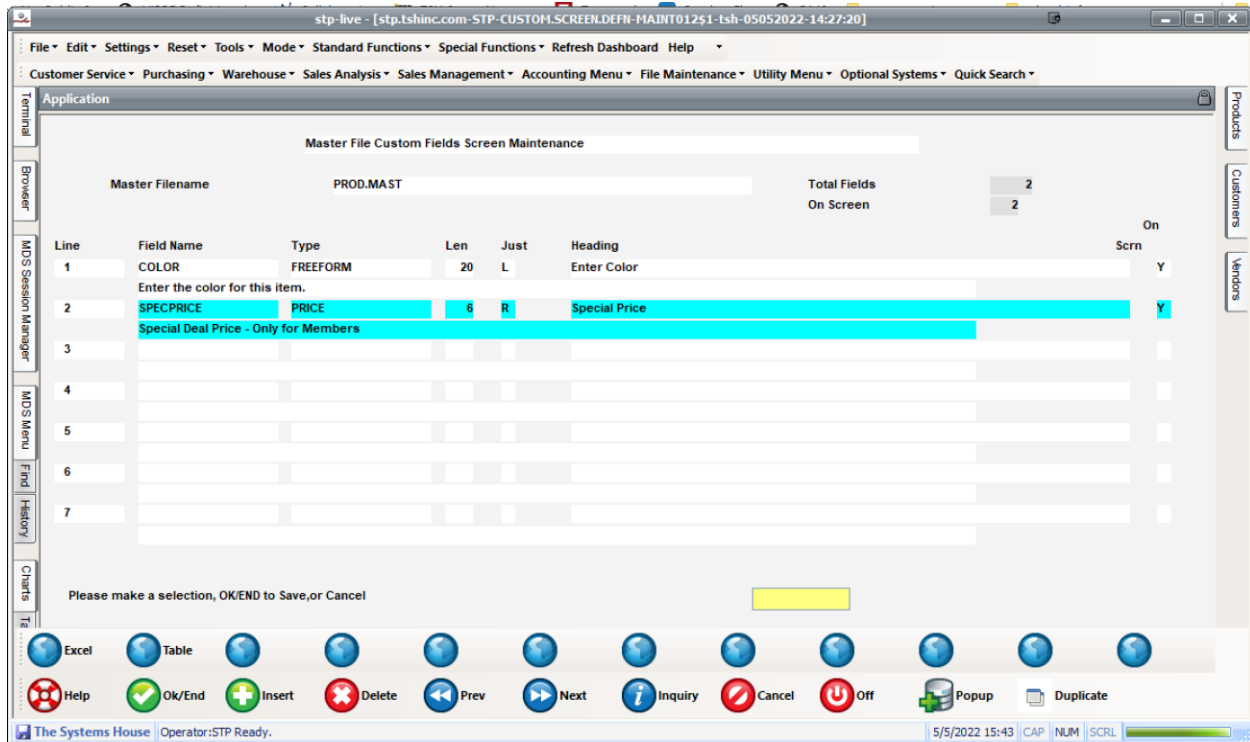
At the bottom of the interface, there is a toolbar with various icons for navigation and actions, including "Oe", "Contacts", "Maint", "Drill", "Execing", "Reports", "Capt Off", "View", "Crm.menu", "Vrm.menu", "Help", "Ok/End", "Insert", "Delete", "Prev", "Next", "Inquiry", "Cancel", "Off", "Popup", and "Duplicate". The status bar at the bottom left shows "The Systems House | Operator:STP Ready." and the bottom right shows the date and time "5/5/2022 15:33" along with keyboard shortcuts "CAP", "NUM", and "SCRL".

For setting up a new file you would need to start with option 2. Extension file Setups to create the screen settings then use 1. Custom Master File Extension Definition

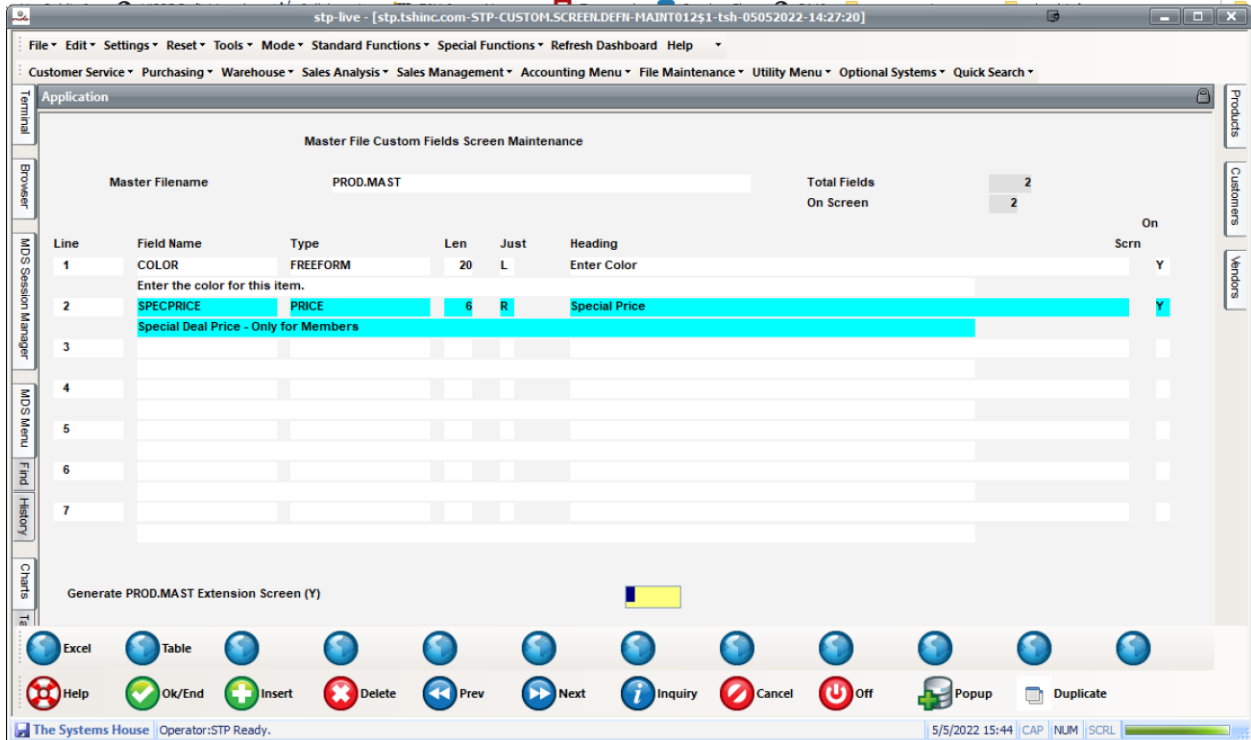


The extension file is the the master file (PROD.MAST) – see appendix A for list , and “\_USER” ,this will be the database file name, please use the same convention unless advised to do otherwise by support. The Extension Screen name is the name of the screen application – this can be user later to change the prompts if need be -but for the most part it will automatically be setup. Prompt for User Screen is to determine if we should ask everyone to update the user file for each maintenance, this is also a system wide option you can turn off. Compiled indicates if the screen was updated or not, It must be “Y” to have your changes reflected.

After completing this screen, you can use option 1 to add new fields



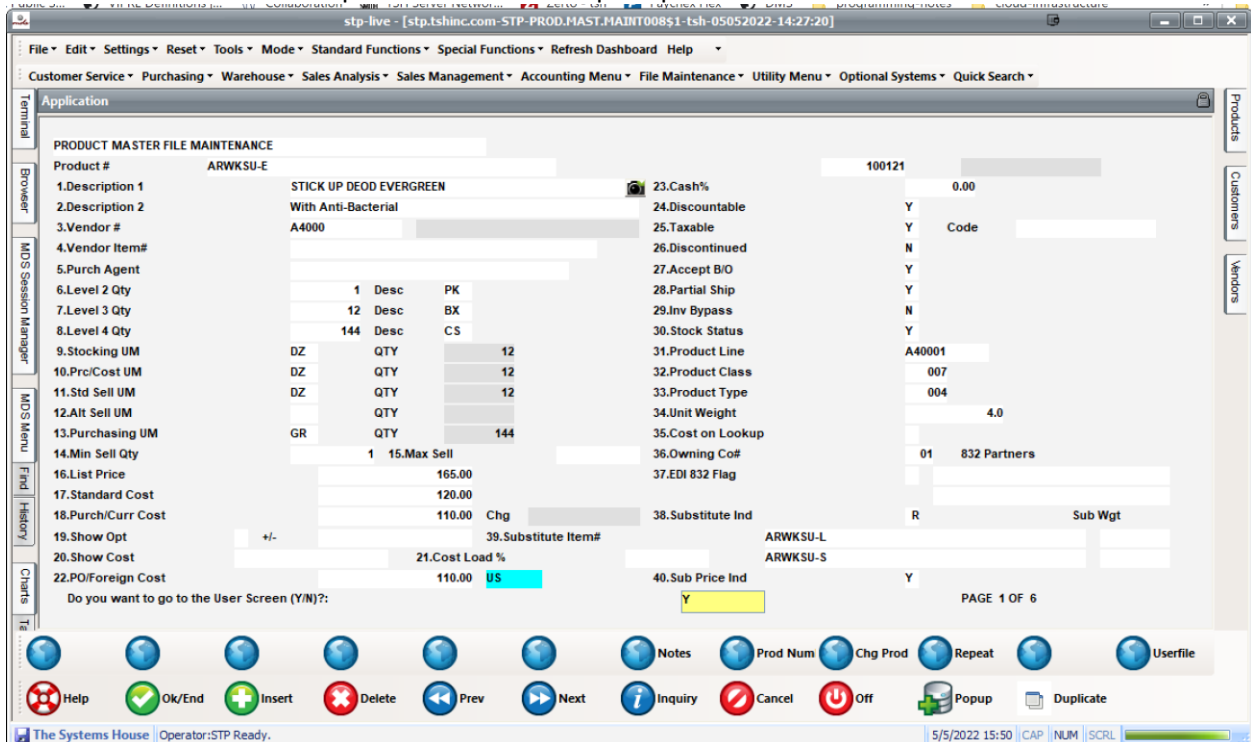
To add or change a field simply enter the name of the new field to add – in our example Color , choose a data type – (see appendix B) in this case Freeform text , choose the length of the field and justification left or right. (numbers are typically right justified). Then enter the heading or label to display on the screen and enter Y/N to have it display on the screen or just be in the database . Lastly you can enter an optional help message.



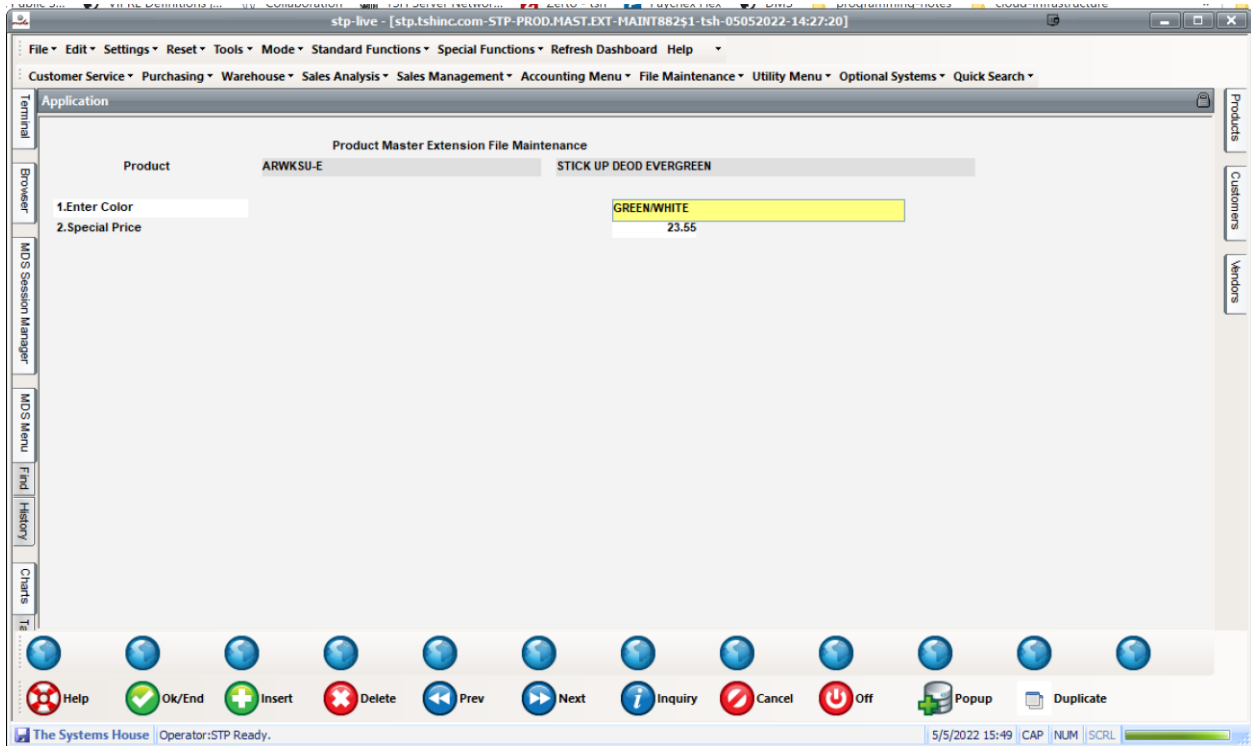
Once completed save your changes and compile/generate the screen for them to update.

## Step 2. *Update your Data*

In our example Product Master was updated so we can use standard product master maintenance and click on the user button to update. Or we can be prompted to enter the information.



Once we click the user file we can manually update our fields

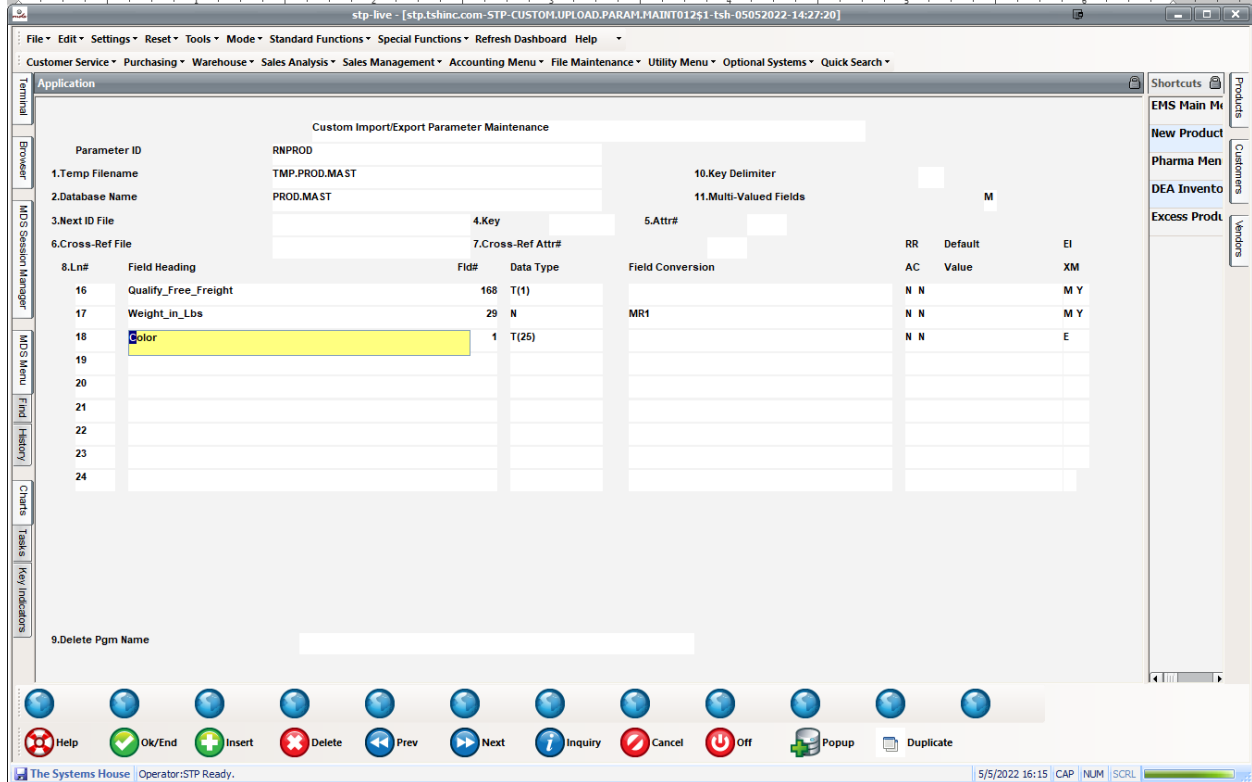


And save when exiting the maintenance.

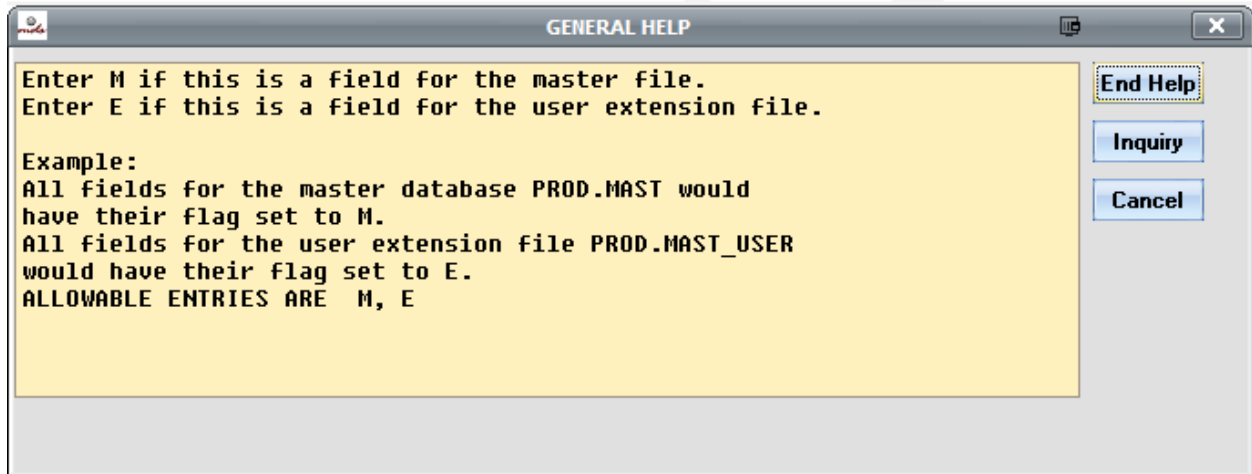
### Step 3. *Update your Custom Import/Export Screens and Settings* (OPTIONAL)

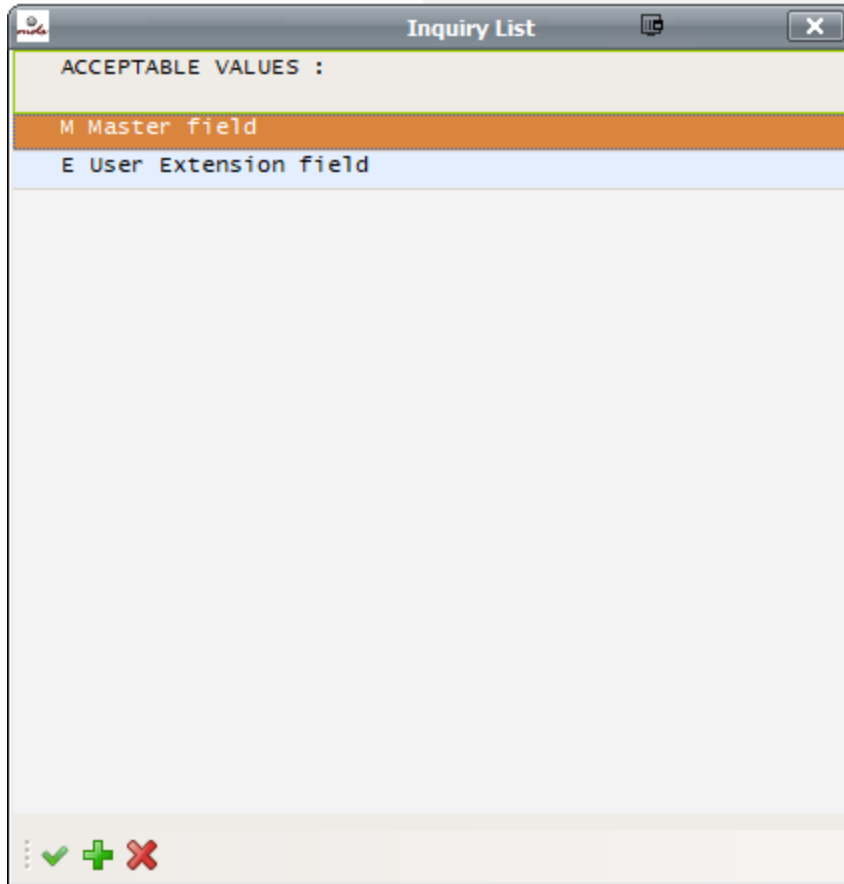


Using option 2 we can update the Remotenet File Import to allow us to import the color



Under the EX column we can click on the help or inquiry and choose extension , since we know the COLOR is the first field in the extension file we just field 1.





Step 4. *Update your Remotenet Web Page* (OPTIONAL)

Using the Remotenet Upload/Download and any text editor – you can add custom fields from any table to the web page

Example here Product Color: [`$$CNV$PROD.MAST_USER$COLOR$`] <br>

Tells you to use the special function `$$CNV` to show the product master user table color

```

ACE-PI-3-26-22.TXT [C:\Users\dauid\OneDrive - The Systems House, Inc\Desktop\ACEWEB-2-8-22\ACE-PI-3-26-22.TXT]
File Projects Edit Search View Format Encoding Tools HTML Settings Window Help(x)
1.. ACE-PI-3-26-22.TXT
0 10 20 30 40 50 60 70 80 90 100 110
958 <tr>
959 <td colspan=9 valign=bottom align=center nowrap>
960 <input type=button class=button1 value="view MSDS" name="MS" onclick="javascript:msds_detail(' [DATASHEET.KEY]
961 onmouseover="this.className='button1 buttonhov1'" onmouseout="this.className='button1'">
962 </td>
963 </tr>
964 </table>
965 <!-- Added Examples of how to load additional product lines and information -->
966 <div id="PIFBodyprodinfo">
967 Additional Information for this Product: <br>
968 Product color: [ $CNV$PROD.MAST_USER$COLOR$ ] <br>
969 <div id="MNFCODE" style="[HIDEVALUE]">Manufacturer Code:
970 <div class="labelhide">[ $CNV$PROD.MAST$MNF.PROD#$ ]</div>
971 </div>
972 <div id="MNFNAME" style="[HIDEVALUE]">Manufacturer Name: <div class="labelhide">[ $CNV$PROD.MAST$MNF.NAMES$ ]</div></d
973 <div id="EXPDATEREQ" style="[HIDEVALUE]">Expiration Date Req: <div class="labelhide">[ $CNV$PROD.MAST$EXP.DAT.REQ$ ]<
974 <TABLE class="PIDrugTable">
975 <tr style="[HIDEVALUE]"> <td> Drug Form: </td><td class="labelhide">[ $CNV$PROD.MAST$MSPAN.DOSAGES$ ]</td>
976 </tr>
977 <tr style="[HIDEVALUE]"> <td> Imprint: </td><td class="labelhide">[ $CNV$PROD.MAST$MSPAN.IMPRINT$ ]</td>
978 </tr>
979 <tr style="[HIDEVALUE]"> <td class="labelhide"> [ $CNV$PROD.MAST$MSPAN.CATDESC$ ] </td><td class="labelhi
980 </tr>
981 <tr style="[HIDEVALUE]"> <td> Additional Information: </td><td class="labelhide">[ $CNV$PROD.MAST$MSPAN.
982 </tr>
983 <tr style="[HIDEVALUE]"> <td> Manufacturer:</td><td class="labelhide">[ $CNV$PROD.MAST$MNF.NAME$ ]</td>
984 </tr>
985 <tr style="[HIDEVALUE]"> <td> Drug Name: </td><td class="labelhide">[ $CNV$PROD.MAST$FDANAME$ ] [ $CNV$PR
986 </tr>
987 <tr style="[HIDEVALUE]"> <td> Generic Name: </td><td class="labelhide">[ $CNV$PROD.MAST$FDAGENNAME$ ] </td>
988 </tr>
989 <tr style="[HIDEVALUE]"> <td> FDA Drug Form: </td><td class="labelhide">[ $CNV$PROD.MAST$FDADOSAGE$ ] </td>
990 </tr>
991 <tr style="[HIDEVALUE]"> <td> FDA Route: </td><td class="labelhide">[ $CNV$PROD.MAST$FDAROUTE$ ] </td>
992 </tr>
993 <tr style="[HIDEVALUE]"> <td> Labeler: </td><td class="labelhide">[ $CNV$PROD.MAST$FDALABELER$ ] </td>
994 </tr>
995 <tr style="[HIDEVALUE]"> <td> substance: </td><td class="labelhide">[ $CNV$PROD.MAST$FDASUBSTANCES$ ] </td>
996 </tr>

```

Customer Reporting x Customer Reporting x TSH Invoice Listing 7.0 x Microsoft Office Home x Product Info 7.0 x Virtual Mailing Address x

stptshinc.com/MDSWEB/login882

Welcome DEMO | Order: 000289 \$0.00 | Checkout | 1-Click Checkout | View Order | Log out - Any issues?

Place an Order My Account Deals Contact Us Home Enter Product SEARCH

Ord. Qty	UM	Price	Product No.	Product Description	Manufacturer	MFG Product Code
1	ADD	\$165.00	ARWKSU-E	STICK UP DEOD EVERGREEN WITH Anti-Bacterial	A4000	In Stock

Enter quantity in box to the left, then click on the "Add To Order" button to update your current order.

VIEW MSDS

Additional Information for this Product:  
 Product Color: GREEN/WHITE  
 Manufacturer Code:  
 Drug Form:

Customers who have purchased this have also bought...

We don't have any suggestions available at this time, but the more you purchase the better our suggestions will be, so check back soon.

Your Purchase statistics for this product:  
 Note: All usage is displayed in the Stocking Unit of Measure.

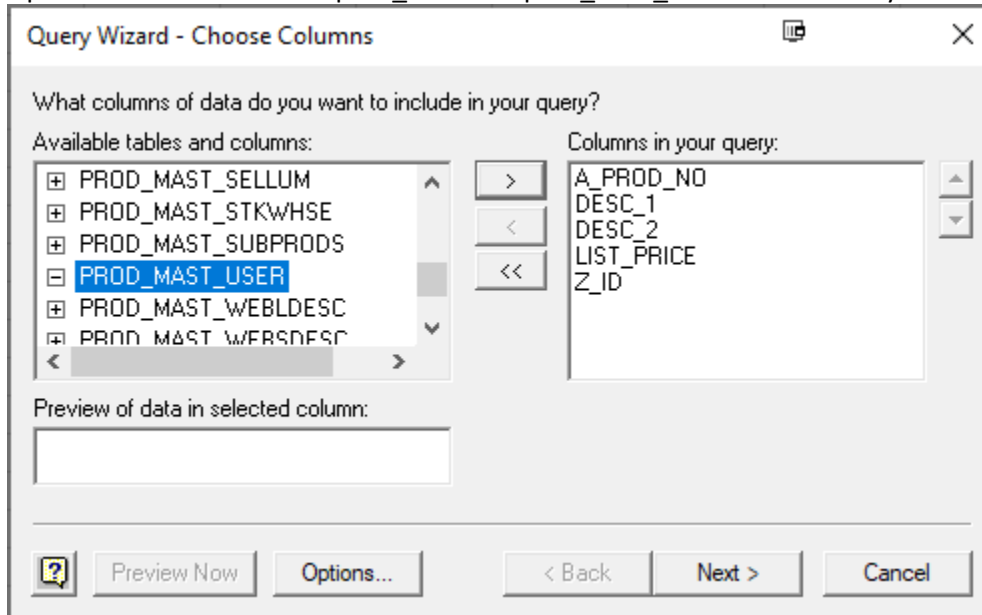
Previous 6 Transactions

Live Help  
 Do you have questions?  
 Call us : 973-777-8050  
 E-mail us : orders@pharmademo.com  
 Your Account Representative  
 Sales Contact : Kevin Strach  
 Call :  
 E-mail :

Step 5. Create a Custom Query in Excel using an Extension/User Defined Field (OPTIONAL)

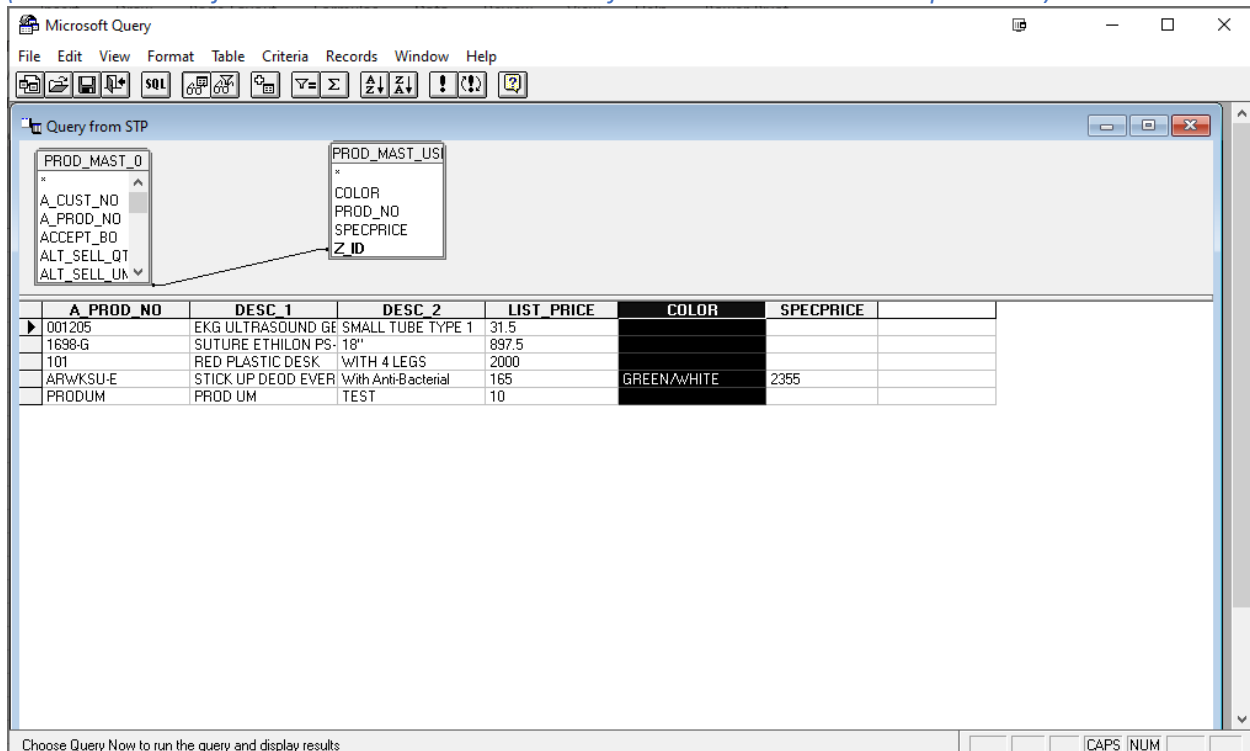


Open excel and choose the prod\_mast and prod\_mast\_user TABLES from your odbc connection



Using MS query, you can link them using the Z\_ID as that is the id or key field for both tables and it will match

(notes on how to join tables and what to use them for are available on our help website)



Once you are done selecting fields you can return them to excel to use your custom data.

PROD_NO	DESC_1	DESC_2	LIST_PRICE	COLOR	SPECPRICE
001205	EKG ULTRASOUND GEL 8 OZ	SMALL TUBE TYPE 1	31.5		
1698-G	SUTURE ETHILON PS-2 6-0	18"	897.5		
101	RED PLASTIC DESK	WITH 4 LEGS	2000		
ARWKSU-E	STICK UP DEOD EVERGREEN	With Anti-Bacterial	165	GREEN/WHITE	2355
PRODUM	PROD UM	TEST	10		

## Appendix A: List of Currently Defined Master Files

### Filename

- BANK - Bank File
- CADF - Chart of Accounts Description File (General Ledger)
- COMPANY - Company File
- CUST.MAST - Customer File
- PROD.DET - Product Inventory File
- PROD.MAST - Product Master File
- PROSPECT.MAST - Prospect File (CRM)
- SALESMAN - Salesman File
- SHIP.TO - Shipto Locations File
- VEND.MAST - Vendor File
- WAREHOUSE - Warehouse File

## Appendix B: List of Field Types

*Note: For Company, Customer, Product, Vendor, Warehouse they are validated to the respective tables/files for each Element. IE You would enter a valid company code.*

### Type Description

- CODE Code from Table
- COMPANY Company
- COST Cost field (standard decimals)
- CUSTOMER Customer
- DATE Date field MM/DD/YY
- DECIMAL0 Numeric field (no decimals)
- DECIMAL1 Numeric field 1 decimal

DECIMAL2 Numeric field 2 decimals  
DECIMAL3 Numeric field 3 decimals  
DECIMAL4 Numeric field 4 decimals  
DECIMAL5 Numeric field 5 decimals  
DECIMAL6 Numeric field 6 decimals  
DISPLAY Display ONLY (NO ENTRY)  
FLAG Flag field  
FLAG.YN Yes/No Flag  
FREEFORM Freeform data (comment/text)  
LABEL Screen Label (NO ENTRY)  
PRICE Price field (standard decimal)  
PRODUCT Product field  
QTY Quantity field (standard dec)  
REQUIRED Required Entry (TEST)  
TEXTBOX Textbox field  
TIME Time field HH:MM:SS  
VENDOR Vendor  
WAREHOUSE Warehouse  
WP Multiple lines freeform text