

MDS Esalestax Interface Training Guide

Djf 4/16/2008

Overview:

The MDS system has the ability to enter a tax jurisdiction and will allow you to calculate and create a tax register for your system. With the addition of the Esalestax interface MDS now will automatically calculate the correct taxable rates based upon your companies tax liability in each jurisdiction and the type of products you sell.

Each transaction will be sent via the internet to esalestax.com and will return the total amount of tax for the order/shipment/invoice

Orders will create a tax transaction but no actual tax is ever charged until your run the Invoice update process.

Once an invoice is processed it creates a tax liability for your company on esalestax.com Esalestax also offers the ability to file the taxes automatically for each jurisdiction.

Alternately you can print the MDS tax Register but you will have to separate your tax jurisdictions manually.

Step1. Logging in to the Esalestax.com Web Interface

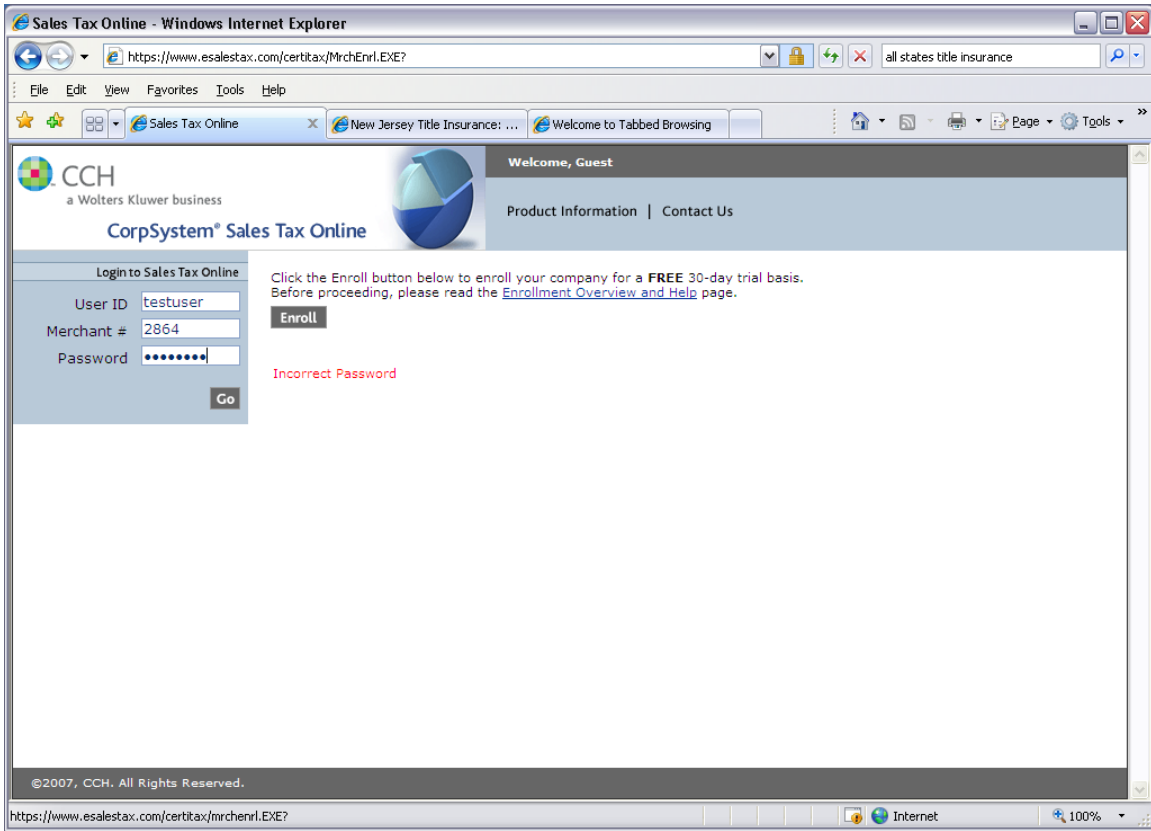
<https://www.esalestax.com/Certitax/mrchenrl.exe?>

Required:

Username (provided by your inhouse Admin)

Merchant#: (provided by tsh/esalestax admin)

Password: (provided by your inhouse Admin)



Step 2. Setting up your Locations and Tax Nexus

Sales Tax Online - Windows Internet Explorer

https://www.esalestax.com/ceritax/mrchenr1.EXE?LWSYD_SID=12113515&WSYD_SIGN=19E93E2FDD9E648D53F64

all states title insurance

File Edit View Favorites Tools Help

Sales Tax Online New Jersey Title Insurance: ... Welcome to Tabbed Browsing

CCH a Wolters Kluwer business

CorpSystem® Sales Tax Online

Welcome, Testuser [The Systems House, Inc.]

Product Information | Online Help | Contact Us

Logoff from Sales Tax Online

Home

Bank Accounts

Business Rules

Locations

Profile

SKUs

Tax Liability

Transactions

Users

View Locations

[Add New](#) | [Back](#)

Location ID	Location Name	Address	City	State/Prov	
California Offi	Ca Warehouse	123 California Way	Salinas	CA	Edit Display View Nexus
Default	The Systems House, Inc.	1033 US Highway 46	Clifton	NJ	Edit Display View Nexus

[Help](#)

Search Locations

Search by

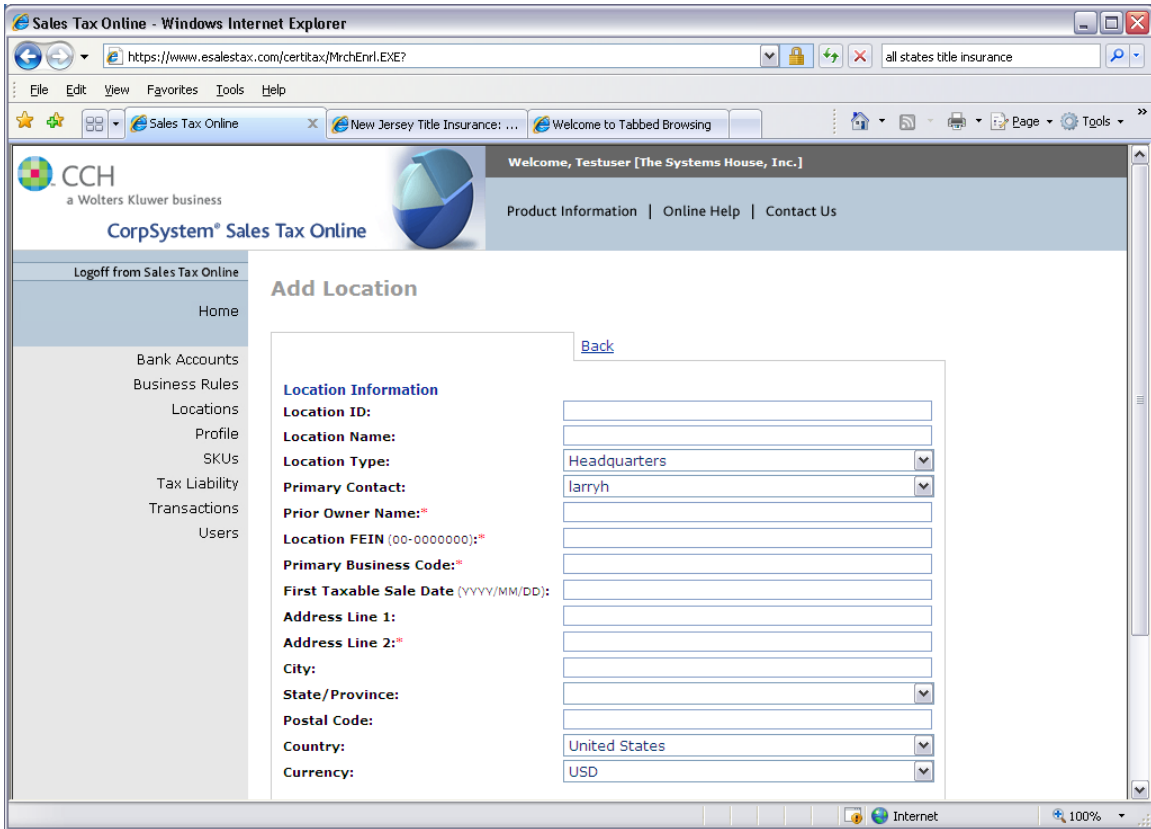
ID:

To return to top of list, click "Go".

©2007, CCH. All Rights Reserved.

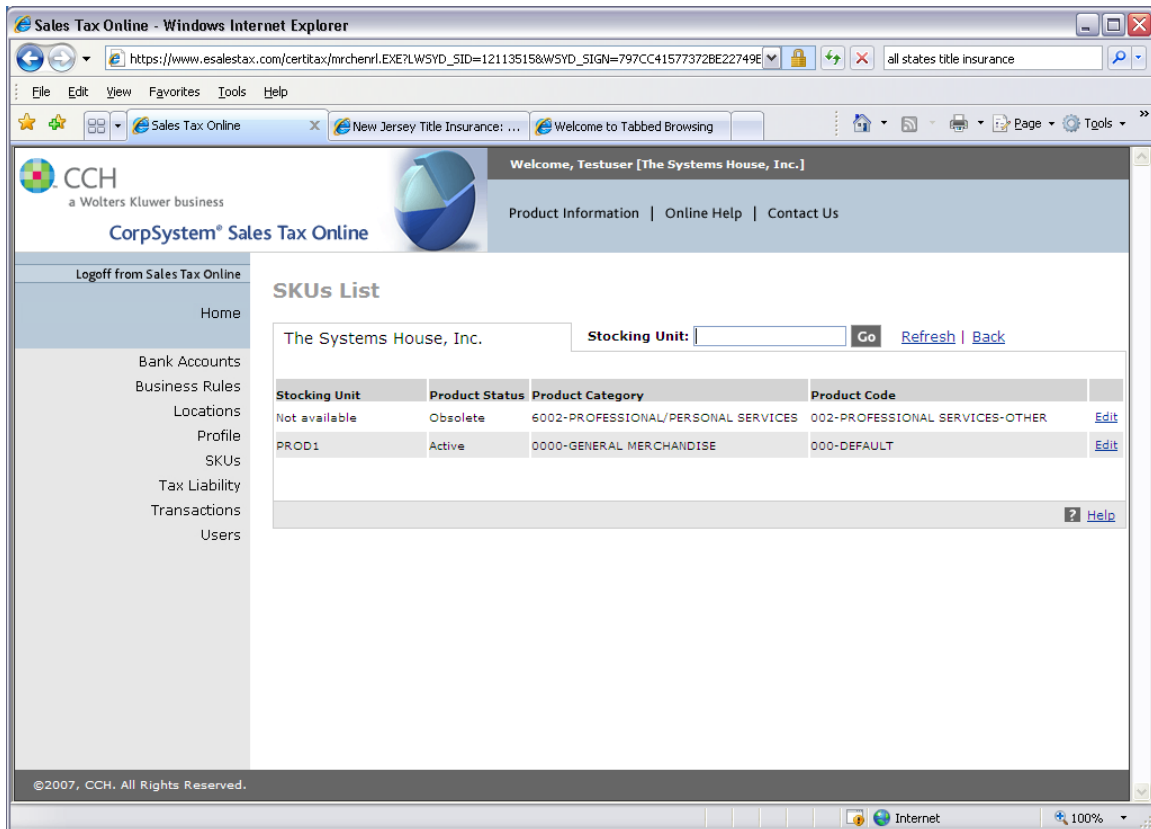
Internet 100%

Add a new location:



Once you have setup all the jurisdictions you are charging tax in you will now need to define your default products

3. Define your default product



Once your default item category is setup all transactions will be based upon that product category – Example: General Merchandise:

You are now ready to utilize the MDS Esalestax Interface
This step should be performed by your TSH Support Representative

Setup for PARAMETER ESALESTAX

127.0.0.1 * attr #1 Esalestax Client IP Address
 1222 * attr #2 Esalestax Client Port Number
 6C00-6000-XXXX-4C05 * attr #3 Customer's Esalestax Serial Number
 Y * attr #4 Line Items flag (for CALCULATE) (Y/N)
 N * attr #5 Address Verification flag (for CALCULATE transaction) (Y/N)
 Y * attr #6 Breakdown Taxes flag (for CALCULATE transaction) (Y/N)
 /u1/accts/esalestax/unix/certitax * attr #7 Esalestax Program Path (path information)
 C:\Esalestax\windows\certitax.exe * Attr8 certitax client on PC (not required)
 C:\Program Files\CertiTax\Bin\certitax.exe * Attr9 certitax client on PC (not required)
<http://webservices.esalestax.net/CertiTAX.NET/REQUEST.TYPE>
 attr #10 URL for Esalestax Web services

As of release 12.10 MDS Requires that the Line Item Flag must be set to “Y”

If you turn on the address verification parameter this service must also be purchased from esalestax.com

Your Serial number is provided by your TSH/Esalestax admin

During various processes (order entry,maintenance, verification , credit memos etc.)

You will see a new popup informing you that the MDS system is communicating with the Esalestax system.

The screenshot shows the 'Order Maintenance' window with the following data:

Lines	Order Qty	Ship Qty	Open Qty	Dollars
5	5			320.00

Order Details:

- Co: 01, Whse: 001, Customer: TESTCLIENT, TEST CLIENT
- Order#: 017779
- Order Date: 01/21/08
- 1. Trade Disc%: 5.00, 16.00
- 2. Charge Freight: [blank]
- 3. Ship Via: 01, DEFAULT
- 4. Ship Zone: 001
- 5. Freight: 0.00
- 6. Tax Juris: [blank]
- Tax %: 0.000 ON, 304.00, 21.28
- 7. Misc Charge: [blank], 0.00
- 8. Cash Disc%: 0.00, 0.00
- Total: 325.28
- 9. Salesman: 001 DOUG MACK
- Commission %: 0.00
- 10. Resid/Comm: C
- 11. Freight Class: [dropdown]

Now Connecting to EsalesTax Online Server.....

Navigation Bar:

MDS INQ	AR INQ	DETAIL	CANCEL	HEADER	SHIPPING			CUSTNOTE		
HELP	OK/END	INSERT	LDELETE	PREV PG	NEXT PG	INQUIRY	CANCEL	Off		Popup

Once a response from the Esalestax system is received the MDS system will inform you of any errors or response codes.

If there are no errors the Tax base (304.00 in the example below) and the Tax Amount (21.28) are displayed and stored in the order/release record
As well as a certitax transaction ID.

Examples of an error would be a communications Error (Code 999)

The most common error is a 999 – this is caused by the server not responding within 5 seconds - - and is a non fatal error – you can recalculate by going to the ship via or freight class fields.

djf - [mail.tshinc.com-18 DMACKTEST-SSS.OE.TOT.INPUT962S1]

File Edit Settings Reset Tools GUI PDA Standard Functions Special Functions Help

Order Maintenance

Co 01 Whse 001 Customer TESTCLIENT TEST CLIENT

Order# 017779

Lines	Order Qty	Ship Qty	Open Qty	Dollars
5	5			320.00

Order Date 01/21/08

1. Trade Disc% 5.00 16.00

2. Charge Freight

3. Ship Via 01 DEFAULT

4. Ship Zone 001

5. Freight 0.00

6. Tax Juris

Tax % 0.000 ON 304.00 21.28

7. Misc Charge 0.00

8. Cash Disc% 0.00 0.00

Total 325.28

9. Salesman 001 DOUG MACK

Commission % 0.00

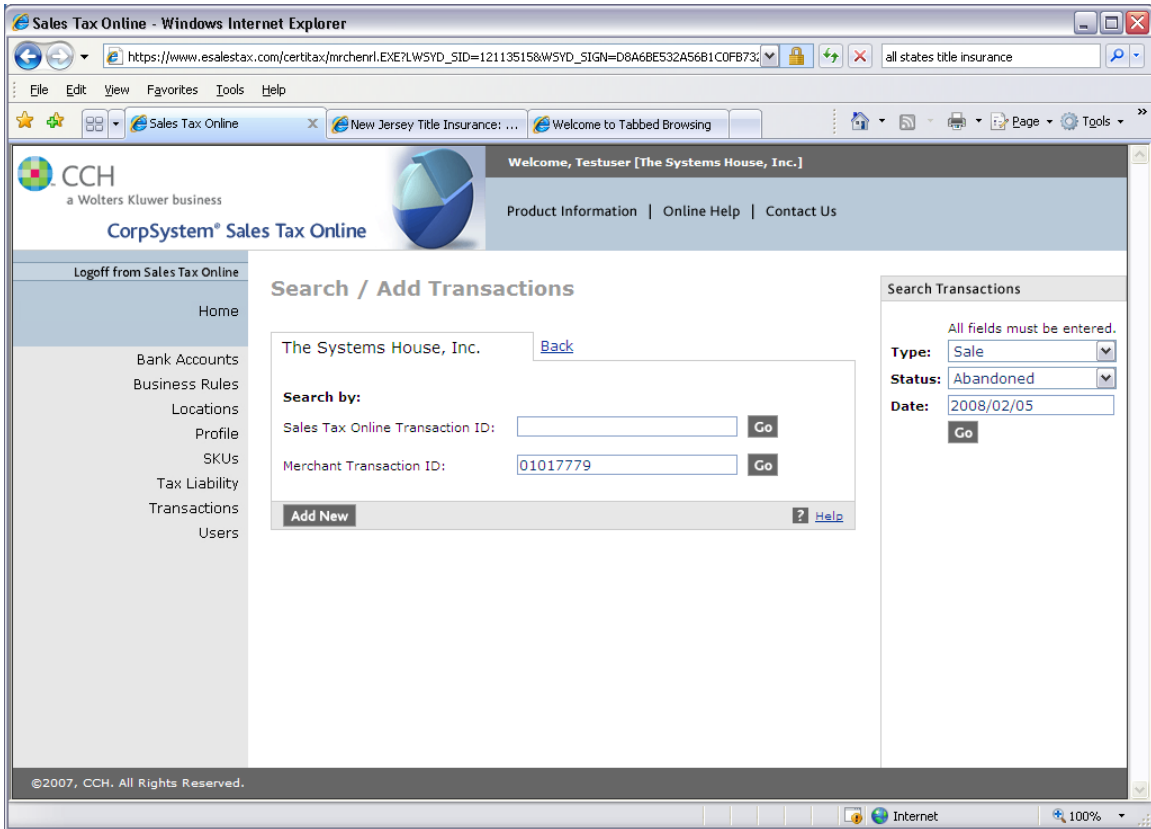
10. Resid/Comm C 11. Freight Class

Completed Processing on EsalesTax Online Server.....

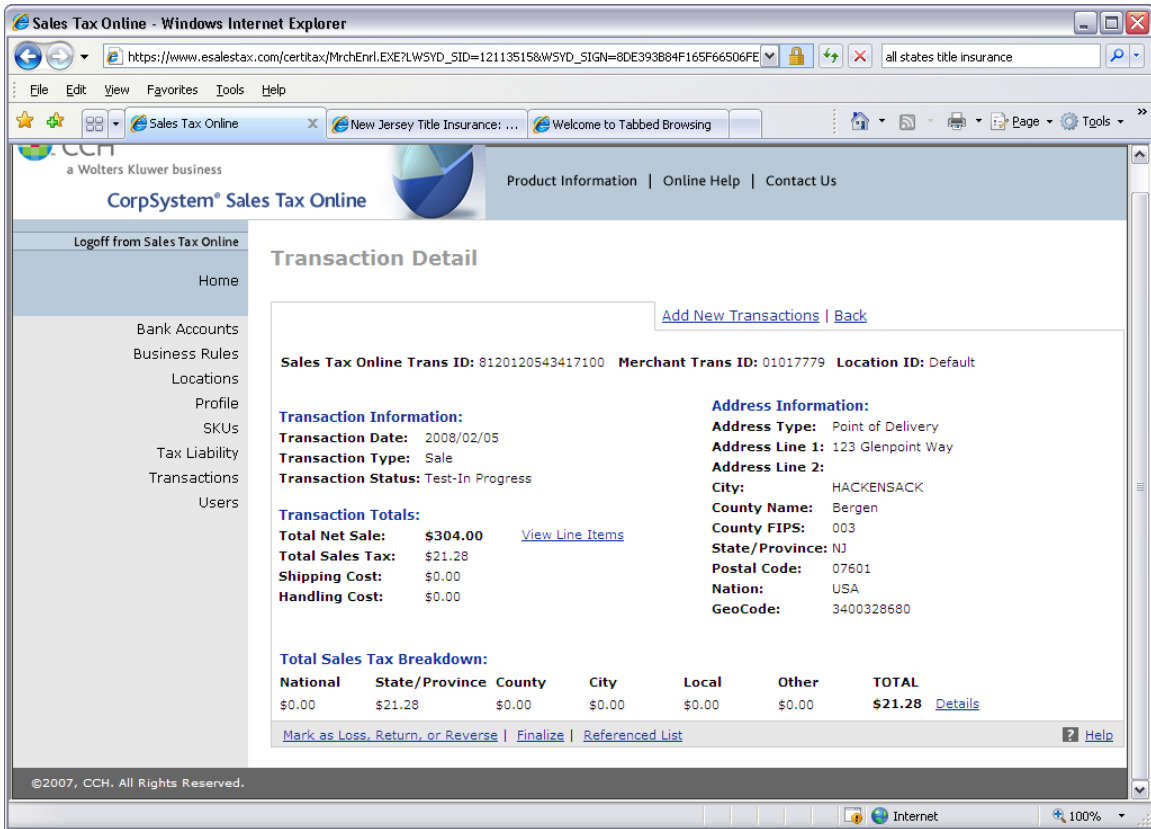
MDS INQ	AR INQ	DETAIL	CANCEL	HEADER	SHIPPING		CUSTNOTE		
HELP	OK/END	INSERT	LDELETE	PREV PG	NEXT PG	INQUIRY	CANCEL	Off	Popup

You can now verify that the transaction was successfully transmitted to the esalestax.com website by logging in and going to the transactions tab.

The MDS order/Credit Memo/Release number is sent to Esalestax for lookup purposes

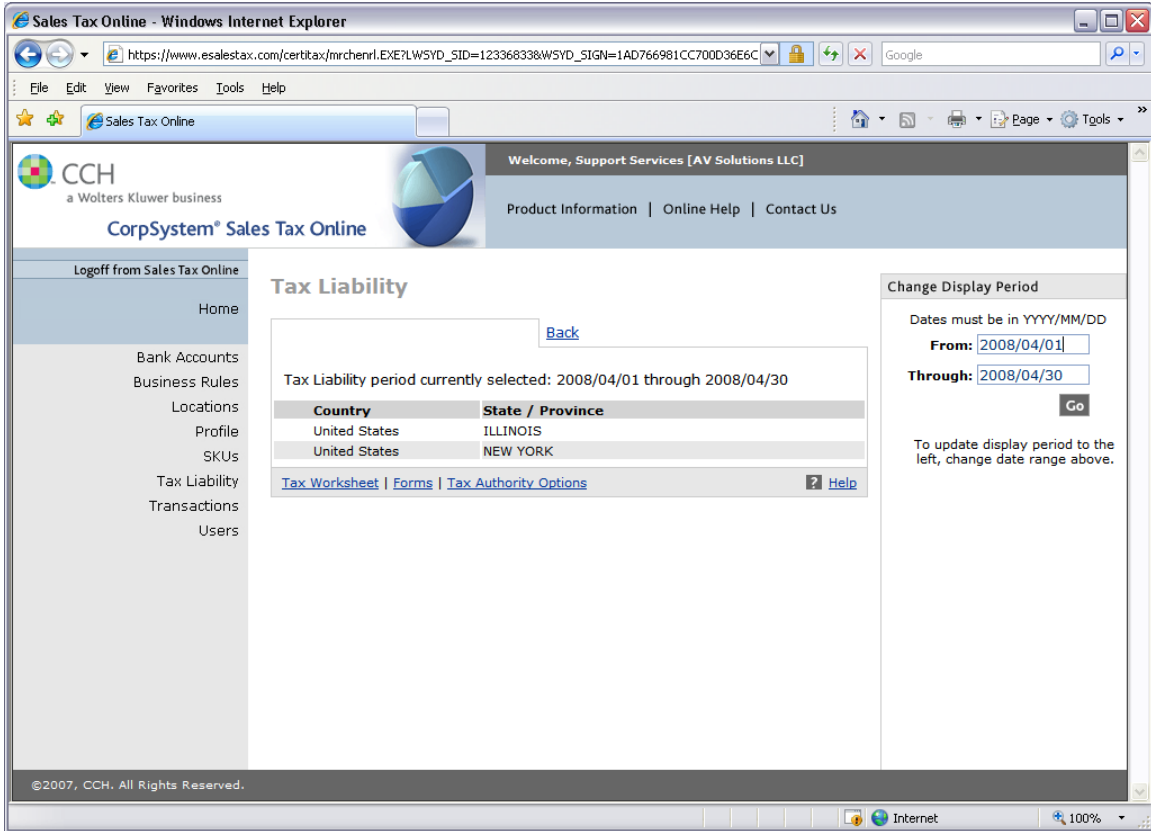


You can then view the details for each transaction

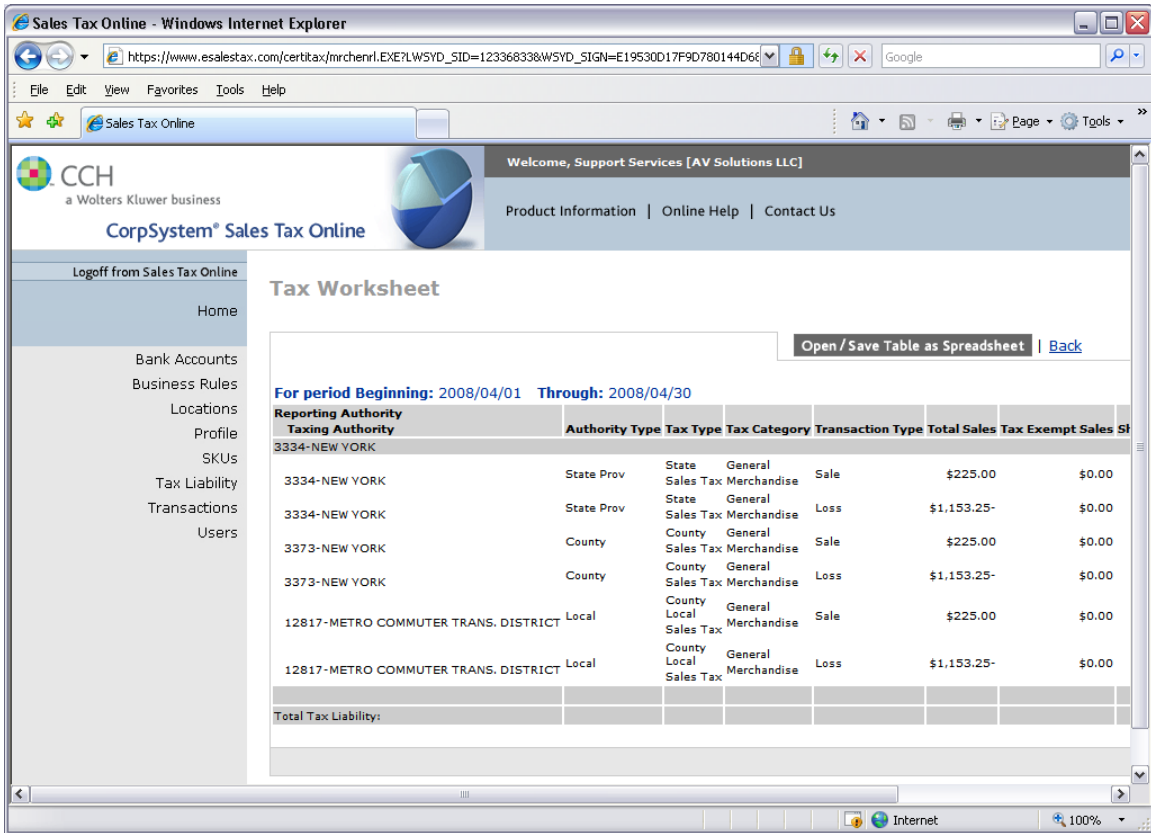


Once the MDS Invoice Update process is run the tax transactions are converted from “In-Progress” to “Final”
 And creates a tax liability for your company

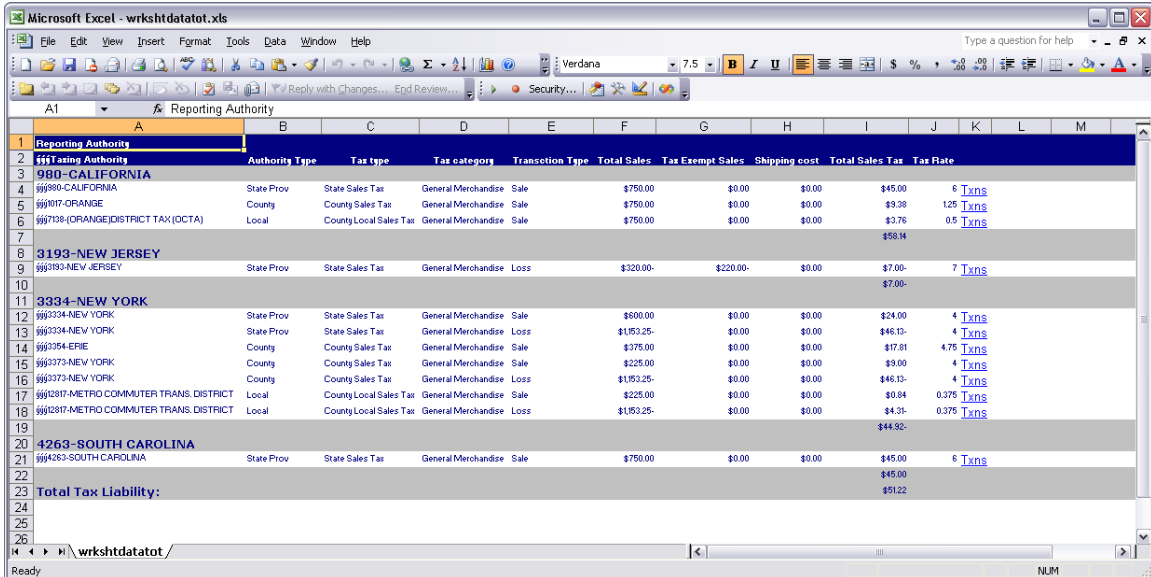
At the end of your reporting periods (monthly, quarterly, etc) you can now run a register on the Esalestax system and check against the sales tax totals for the same period in the MDS system. NOTE: Because MDS doesn’t calculate the totals we can only match to the totals and if there is a discrepancy you will need to summarize by customer or shipto location on both sides using reporting tools to identify any issues.



The Esalestax.com website provides useful spreadsheets for reporting , as does the MDS system.



Here is an example of the spreadsheet you can download



To run a register from MDS you can use any of the standard Tax Listings or Your custom exports (example of a custom export below)

djf - [mail.tshinc.com-18 DMACKTEST-SALES.TAX.REG.EXPORT962S1]

File Edit Settings Reset Tools GUI PDA Standard Functions Special Functions Help

Sales Tax Register to Excel Capture:On

1. Customer# All

2. Invoice Date All

3. Fiscal Period 0712

Press <RETURN> to Process Report, Line# to Change, or ABORT : XXXXXX

HELP	OK/END	INSERT	LDELETE	PREV PG	NEXT PG	CAPT OFF	INQUIRY	CANCEL	Off	Popup
------	--------	--------	---------	---------	---------	----------	---------	--------	-----	-------