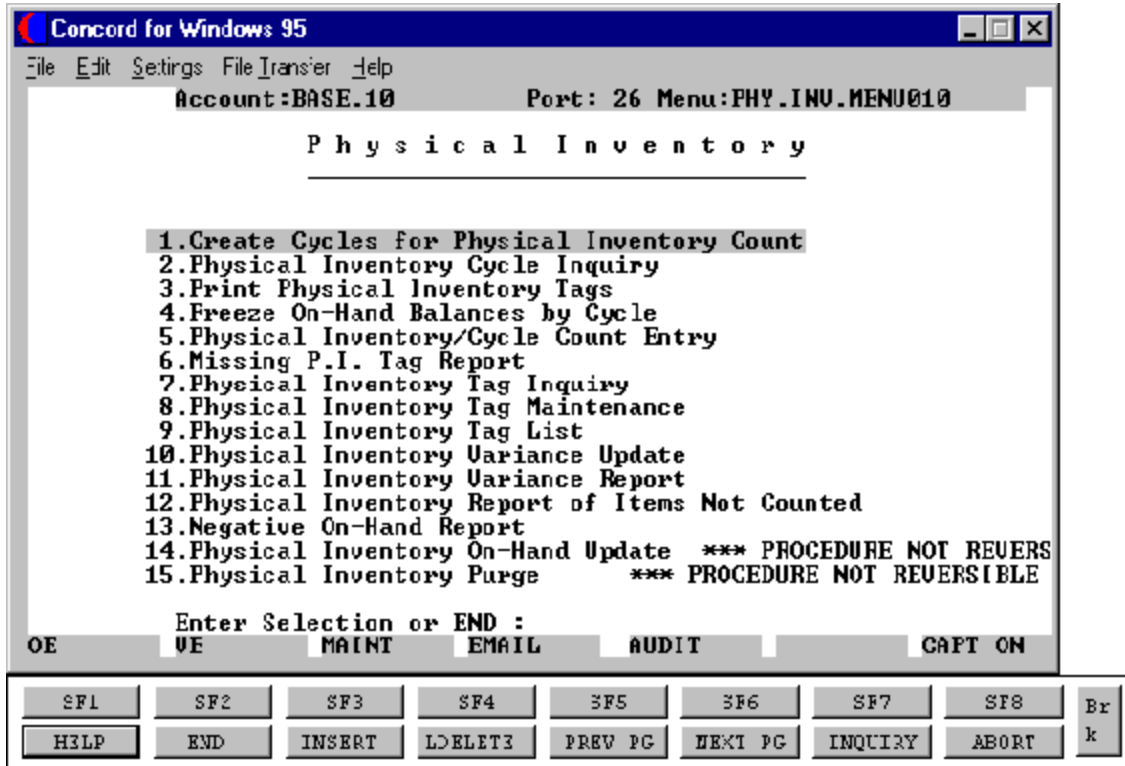


**THE SYSTEMS HOUSE, INC.
MASTER DISTRIBUTION SYSTEM DOCUMENTATION**

T A B L E O F C O N T E N T S

PHYSICAL INVENTORY OVERVIEW	2
PHYSICAL INVENTORY PROCEDURAL FLOW	3
PHYSICAL INVENTORY PROCEDURES	7
CREATE CYCLES FOR PHYSICAL INVENTORY COUNT	10
PHYSICAL INVENTORY CYCLE INQUIRY	14
PRINT PHYSICAL INVENTORY TAGS	16
FREEZE ON-HAND BALANCES BY CYCLE	19
PHYSICAL INVENTORY/CYCLE COUNT ENTRY	22
MISSING P.I. TAG REPORT	26
PHYSICAL INVENTORY TAG INQUIRY	29
PHYSICAL INVENTORY TAG MAINTENANCE	33
PHYSICAL INVENTORY TAG LIST	36
PHYSICAL INVENTORY VARIANCE UPDATE	39
PHYSICAL INVENTORY VARIANCE REPORT	41
PHYSICAL INVENTORY REPORT OF ITEMS NOT COUNTED	43
NEGATIVE ON-HAND REPORT	45
PHYSICAL INVENTORY ON-HAND UPDATE ***PROCEDURE NOT REVERSIBLE	47
PHYSICAL INVENTORY PURGE ***PROCEDURE NOT REVERSIBLE ***	49

PHYSICAL INVENTORY MODULE



PHYSICAL INVENTORY OVERVIEW

The MDS system supports a full set of physical inventory procedures which can be run according to purchase order number, vendor, product line, range of products, cycle count code, product rank, product class or warehouse. Cycle counting is a method of doing a physical inventory in groups or 'cycles'. Instead of counting an entire warehouse of items, counts of smaller, more manageable groups of items can be done on a cyclical basis (daily, weekly, monthly, etc.). The physical inventory module is designed to take a complete or partial physical inventory which will allow the operator to:

1. Create a cycle for counting using various methods of selection criteria.
2. Create tags.
3. Inquire on both individual tags and whole cycle counts.
4. Freeze the selected inventory.
5. Enter the physical counts.
6. Account for missing tags.
7. Do maintenance on tags that have been entered.
8. Print lists of tags to check for errors.
9. Calculate variances in inventory and print edit reports of inventory variances.
10. Print a report of any negative on-hand quantities the variance update may create.
11. Do a purge of old inventory cycle counts that have been completed.

These procedures, beyond allowing for the correction of on-hand inventory to agree with physical inventory, incorporate the proper accounting practices, and contain the accepted auditing functions required to validate on-hand inventory levels.

PHYSICAL INVENTORY PROCEDURAL FLOW

CREATE CYCLES FOR PHYSICAL INVENTORY COUNT

This is where the process of cycle counting begins. Cycles can be created by purchase order number, vendor, product line, range of products, cycle count code, product rank, product class and entire warehouse. In cycle counts, the choice of warehouse determines how each of the selections will occur. This procedure also allows for the creation of a cycle count that does not generate tags.

CREATE PHYSICAL INVENTORY TAGS FROM PRODUCT AND/OR LOT FILE

This procedure creates physical inventory tags for one or all cycles and generates one tag for each location of a product in each cycle. If this product is stocked in lots, this process will create a tag for each lot/warehouse location combination. If a product is not maintained in a particular warehouse, no tag is created. The Tag file is updated with tag number, item number, description, warehouse number and warehouse location. Control totals of the number of tags for each warehouse are displayed.

PHYSICAL INVENTORY CYCLE INQUIRY

The physical inventory cycle inquiry allows the operator to make inquiries on specific cycles by entering the cycle code number previously created. The inquiry will display all products on this cycle, their description, as well as on-hand quantities. This is not a maintenance program and therefore no modifications to the cycle can be done through this inquiry.

PRINT PHYSICAL INVENTORY TAGS

This procedure prints tags from the Tag file (regardless of the method of creation) by warehouse, cycle, warehouse location by product number or by counter name and tag number. The tags are meant to print on a continuous form, one up.

PHYSICAL INVENTORY PROCEDURAL FLOW

VERIFICATION OF INVENTORY LEVELS PRIOR TO FREEZING OF ON HAND BALANCES

Cycle counting allows the operator to create the tags for a count well in advance of the actual count. Once the inventory is frozen, **the count must take place immediately following the freeze. No inventory movement can occur until the inventory count is completed.** In order to insure the accuracy of the count, all outstanding inventory transactions must be completed and updated before the freeze. All picked orders must be verified, all received purchase orders must be entered into the system. If the Parameter file is set to run bulk verification in the end-of-day processing, the freeze must occur **after** the end-of-day is run but **before** any other inventory transactions (order entry, warehouse transfers, receipts, etc.) occur for the products in this cycle.

THIS STEP IS CRUCIAL TO INSURE THAT A PROPER COUNT OF ON-HAND INVENTORY OCCURS. IF YOU HAVE ANY QUESTIONS, CALL THE SYSTEMS HOUSE BEFORE PROCEEDING ANY FURTHER.

FREEZE ON-HAND BALANCES BY CYCLE

Once all inventory transactions have been updated, this procedure captures the on-hand inventory prior to the count of the inventory. After the physical count has been taken, normal order entry and invoicing procedures may be used even if all the physical inventory has not been posted. This helps keep the impact of the physical inventory on day to day work to a minimum.

PHYSICAL INVENTORY/CYCLE COUNT ENTRY

The physical inventory tag entry procedure allows the operator to enter counts by tag numbers, regardless of the method the tag was created.

The procedure provides for optional use of batch entry controls to minimize entry errors.

The system also allows cycle counting without the use of pre-printed tags. In order to enter counts on products from a cycle that was generated without tags, type the letter "N" at the prompt for the tag number. The system assigns the next available tag number and allows the operator to enter the product and count.

MISSING PHYSICAL INVENTORY TAG REPORT

This report lists all tags that do not have a count entered against them. It is meant to be a means of accounting for all tags that were created by not entered.

PHYSICAL INVENTORY PROCEDURAL FLOW

PHYSICAL INVENTORY TAG INQUIRY

A physical inventory tag inquiry is provided to inquire into the current status of a tag. This inquiry displays the item number, description, warehouse number, tag creation date, count posting date, count, frozen on hand, counter, counters initials, purchase order number, update indicator warehouse location and cycle code information are displayed.

PHYSICAL INVENTORY TAG MAINTENANCE

Physical inventory tag maintenance allows the operator the option to change any data relating to a given physical inventory tag. This procedure is useful for correcting any count entry errors.

PHYSICAL INVENTORY TAG LIST

After entering the tag count, run the listing as a proof. All tags that have been entered appear on the report. The report can be run in four sequences:

1. Tag number
2. Counter
3. Warehouse location
4. Item number

PHYSICAL INVENTORY VARIANCE UPDATE

The variance update calculates differences between the on-hand frozen inventory and the total counts of all tags for the same item.

If a situation arises where the cycle count created has been frozen but cannot be done, go back to the create cycles for physical inventory count, enter the cycle number, and reprocess. When the system calls the cycle, type 'END' and hit <RETURN>. The system will ask if you wish to reprocess the cycle. Enter a "Y", this will reprocess the cycle and leave it open for counting in the future.

NOTE: If a cycle has been reprocessed, the old tags are no longer applicable. New tags are generated in the reprocess and must be printed.

PHYSICAL INVENTORY PROCEDURAL FLOW

PHYSICAL INVENTORY VARIANCE REPORT

This report is produced by warehouse by product and shows the physical count, ties on-hand at the time of the freeze and the variance. Run this listing after doing the variance update to recheck the count on the products listed.

PHYSICAL INVENTORY REPORT OF ITEMS NOT COUNTED

This report is produced by cycles and shows the product, product description, last cost, on hand physical (frozen quantity), physical count and on-hand value of the product.

NEGATIVE ON HAND REPORT

This report determines if, when the physical variance applied to the current on-hand, will cause a negative on-hand balance. Usually this is caused by doing invoicing after the inventory value was frozen and before the count was taken. The operator will have to do an adjustment to correct the situation.

PHYSICAL INVENTORY ON HAND UPDATE

This procedure applies the variance to the current on-hand figure, bringing the physical inventory and inventory into balance. **IT IS A FINAL UPDATE AND CANNOT BE REVERSED. Be certain all the inventory information is accurate before running this procedure.**

PHYSICAL INVENTORY PURGE

This program purges completed cycle count information from the Pi.Tag.Gen and the Pi.Tag.Gen.Xref files. **THIS PROCEDURE IS NOT REVERSIBLE.**

PHYSICAL INVENTORY PROCEDURES

1. Complete the billing and run an end of day. This will update the on-hand for these products.
2. Create the cycle count(s).
3. Print the physical inventory tags.
4. Freeze the on-hand balance. This procedure will copy the on hand quantity to the frozen quantity in the Product Detail records.
5. Count the inventory.
6. Enter the tag count.
7. Run the missing physical inventory tag report. This will show all tags that do not have a count.
8. The physical inventory tag list should be run to review the tags and the count.
9. Do any maintenance on tags that need to be changed.
10. Run the variance update to calculate the difference between the frozen quantity and the count.
11. Run the variance report. This will indicate the frozen quantity, count and variance.
12. Run the items not counted report. This will indicate any products that a count was not entered on.
13. Run the negative on-hand report. This will indicate any products that will have a negative on-hand after the variance has been updated.
14. Any corrections can be made using tag maintenance. After the tag maintenance is completed, the variance update(s) can be run and the variance and negative on-hand reports can be run.
15. When the physical inventory is correct, the on-hand update is run. The current on hand balances will be adjusted based on the variance. **THIS PROCEDURE IS NOT REVERSIBLE AND IS RUN ONLY ONCE.**

PHYSICAL INVENTORY PROCEDURES

16. Run the physical inventory purge if you want to purge old cycle count information.
THIS PROCEDURE IS NOT REVERSIBLE

CREATE CYCLE FOR PHYSICAL INVENTORY COUNT

Concord for Windows 95
_ _ X

File Edit Settings File Transfer Help

PHYSICAL INVENTORY TAG GENERATION

CYCLE COUNT CODE	1	
1. WAREHOUSE CODE	AAA	SELECTION CODE 1=PURCHASE ORDER NUMBER 2=WAREHOUSE/VENDOR NUMBER 3=WAREHOUSE/PRODUCT LINE 4=WAREHOUSE/PRODUCT NUMBER 5=WAREHOUSE/CYCLE COUNT CODE 6=WAREHOUSE/PRODUCT BANK 7=WAREHOUSE/PRODUCT CLASS 8=WAREHOUSE ONLY
2. SELECTION CODE		
3. SELECTION START		
4. SELECTION END		
5. OPERATOR CODE		
6. DATE CREATED	03/04/98	
7. TIME CREATED	11:45:57am	
8. STATUS CODE	F	
9. GENERATE TAGS		

ENTER LINE # TO CHANGE, DELETE TO DELETE, 0 TO ACCEPT :

HELP	END	INSERT	DELETE	PREV PG	NEXT PG	INQUIRY	ABORT	Esc
------	-----	--------	--------	---------	---------	---------	-------	-----

CREATE CYCLES FOR PHYSICAL INVENTORY COUNT

PROGRAM NAME	SSS.BP GEN.MASTER PO.TAG.GEN
SELECTION	MENU-9
SELECTION NUMBER	1
FILES ACCESSED	PI.TAG.GEN PI.TAG.GEN.XREF I.TAG PROD.DET PROD.MAST

OVERVIEW

This program creates physical inventory cycle count and tags. Cycles can be created by purchase order number, vendor, product line, range of products, cycle count code, product rank, product class and entire warehouse. In cycle counts, the choice of warehouse determines how each of the selections will occur. This procedure also allows for the creation of a cycle count that does not generate tags.

OPERATING INSTRUCTIONS

CYCLE COUNT CODE

Enter a new cycle count code or use a cycle count code from the Product Detail file for a specific warehouse and product.

WAREHOUSE CODE

Enter the warehouse number your doing the physical inventory count on.

SELECTION CODE

Select one of the following selection codes:

1. Purchase Order Number
2. Warehouse/Vendor Number
3. Warehouse/Product Line
4. Warehouse/Product Numbers
5. Warehouse/Cycle Count Code

CREATE CYCLES FOR PHYSICAL INVENTORY COUNT**OPERATING INSTRUCTIONS (Continued)****SELECTION CODE (Continued)**

6. Warehouse/Product Rank
7. Warehouse/Product Class
8. Warehouse Only

SELECTION START

Enter the starting order number, vendor number, product line, product number, cycle count code, product rank, product class or warehouse number.

SELECTION END

Enter the ending order number, vendor number, product line, product number, cycle count code, product rank, product class or warehouse number.

OPERATOR CODE

Enter operator code.

DATE CREATED

The system displays the date of creation (today's date).

TIME CREATED

The system displays the time the operator starts physical inventory cycle count.

STATUS CODE

The system displays the current status of the tag. The status codes are (O)pen, (T)ags generated, (P)rinted, (U)pdated, and (R)eprocessed.

GENERATE TAGS

If you want the system to generate tags enter 'Y'. An 'N' will not generate tags.

CREATE CYCLES FOR PHYSICAL INVENTORY COUNT**OPERATING INSTRUCTIONS (Continued)****ENTER LINE # TO CHANGE, DELETE TO DELETE, 0 TO ACCEPT:**

Enter line number to change, 'DELETE' to delete this cycle count or '0' to accept. The only two fields that can not be changed are date created and time created.

If you enter '0' to accept and errors have occurred you will receive the following message:

**ERRORS HAVE OCCURRED IN CYCLE GENERATION PROCESS!!
NOTE HOLD ENTRY FOR ERROR REPORT AND PRESS <RTN>:**

Hit 'RETURN' to continue, or if no errors occur and you selected 'Y' to generate tags the program will continue as follows:

CREATION OF PHYSICAL INVENTORY TAG RECORDS FROM PROD.DET FILE

WAREHOUSE	FROM TAG	TO TAG	# OF TAGS
------------------	-----------------	---------------	------------------

TOTAL TAGS WRITTEN

HIT RETURN TO CONTINUE

CREATION OF PHYSICAL INVENTORY TAG RECORD FROM LOT FILE

WAREHOUSE	FROM TAG	TO TAG	# OF TAGS
------------------	-----------------	---------------	------------------

TOTAL TAGS WRITTEN

HIT RETURN TO CONTINUE

The warehouse number will be displayed along with the starting tag number, ending tag number, number of tags and total tags written for the Product Detail file and Lot file.

PHYSICAL INVENTORY CYCLE INQUIRY

Concord for Windows 95					
File Edit Settings File Transfer Help					
Cycle Count Code Inquiry					
Cycle Code	1	Whse	Date	Time	Status
Line	Product	Number	Product Description	Qty On Hand	
19.	402		PAD - BACK	1123	
20.	403		BROWN DESK TOP	131	
21.	404		ULTRA RED DESK TOP	986	
22.	405		ULTRA BLUE DESK TOP	106	
23.	406		ULTRA BROWN DESK TOP	106	
24.	500		DESK DRAWER KEY	2163	
25.	35MM		35MM CAMERA	10	

Enter END to exit, NEXT PG, PREU PG

HELP	END	INSERT	DELETE	PREV PG	NEXT PG	INQUIRY	ABORT	Back
------	-----	--------	--------	---------	---------	---------	-------	------

PHYSICAL INVENTORY CYCLE INQUIRY

PROGRAM NAME	SSS.BP GEN.MASTER CYCLE.COUNT.INQ010
SELECTION	MENU-9
SELECTION NUMBER	2
FILES ACCESSED	ALPHA.PROD PROD.MAST PROD.DET LOT LOT.XREF WAREHOUSE PARAMETER PO.TAG

OVERVIEW

The physical inventory cycle inquiry allows the operator to inquire on specific cycles by entering the cycle code number assigned. This inquiry will display product numbers with their descriptions and quantities. This inquiry is display only , no maintenance can be done through this program.

INQUIRY DISPLAY OUTPUT

CYCLE CODE - The cycle code to begin the inquiry.

WHSE - The warehouse that the cycle code is assigned to.

DATE - Date that the cycle code was created.

TIME - The time that the cycle code was created.

STATUS - Displays the status of the tags. "O" for open, "T" for tags generated, "P" for printed, "F" for frozen, "U" for updated, and "R" for reprocessed.

LINE - The line number for the first product listed in the cycle code.

PRODUCT NUMBER - The product number of the first item in the cycle code.

PRODUCT DESCRIPTION - The items description.

PHYSICAL INVENTORY CYCLE INQUIRY**INQUIRY DISPLAY OUTPUT (Continued)**

QTY ON HAND - The on hand quantity of the product at the time the cycle was created.

OPERATING INSTRUCTIONS**ENTER CYCLE CODE NUMBER OR 'END' TO RETURN TO SELECTOR**

Enter the cycle code number to begin an inquiry on or enter 'END' to return to the physical inventory menu.

After the cycle code displays the operator will be prompted:

ENTER 'END' TO EXIT, NEXT PG, PREV PG

Enter "END" to end inquiry and exit to the menu. To move to the next page of the inquiry hit the F6 function key. Use the F5 function key to return to previous pages of the inquiry.

PRINT PHYSICAL INVENTORY TAGS

PROK NAME	INV.PROK PPI.TAG.PRT010
PROGRAM NAME	INV.BP VALDPI2
	INV.BP PI.TAG.PRT010
SELECTION	MENU-9
SELECTION NUMBER	3
FILES ACCESSED	OPERATOR
	PI.TAG
	PI.TAG.GEN

OVERVIEW

This procedure prints tags from the Tag file (regardless of the method of creation) by warehouse, cycle, warehouse location by product number or by counter name and tag number.

OPERATING INSTRUCTIONS**PHYSICAL INVENTORY TAG PRINT**

**ENTER CYCLE COUNT NUMBER (4N), 'ALL' FOR ALL CYCLE COUNTS
'R' FOR RANGE OF CYCLE COUNTS, 'S' FOR SELECTIVE CYCLE COUNTS
OR 'END'**

If you enter a cycle count number or select 'ALL' for all the following occurs:

DO YOU WANT TO SELECT A RANGE OF TAG NUMBERS (Y/N/END):

Enter 'END' to return to the mainselector. If you enter 'N' all cycle counts will print, if you enter 'Y' the following occurs:

**ENTER BEGINNING TAG NUMBER OR 'END'
ENTER ENDING TAG NUMBER OR 'END'**

Enter the beginning and ending tag numbers or 'END' to return to the selector.

PRINT PHYSICAL INVENTORY TAGS**OPERATING INSTRUCTIONS (Continued)**

If you enter 'R' for range of cycle counts the following occurs:

**ENTER BEGINNING CYCLE COUNT NUMBER (4N) OR 'END'
ENTER ENDING CYCLE COUNT NUMBER (4N) OR 'END'**

Enter the beginning and ending cycle count number or 'END' to return to the selector.

If you enter 'S' for selective cycle counts the following occurs:

**ENTER CYCLE COUNT NUMBERS SEPARATED BY SEMI-COLONS (;) OR
'END'**

NOW SELECTING 'PI.TAG'FILE - - - PLEASE WAIT

NOTE HOLD ENTRY AND PRESS <RTN> TO CONTINUE:

PRINT PHYSICAL INVENTORY TAGS

TAG NO 173878
P/N 101
DESC RED PLASTIC DESK
WHS NO 001 WHS LOC B20

TAG NO 173879
P/N STUSSY
DESC STUSSY DIRECTORS CHAIR
WHS NO 001 WHS LOC N45

TAG NO 173880
P/N 102
DESC BLUE PLASTIC DESK
WHS NO 001 WHS LOC

TAG NO 173881
P/N TBN001
DESC 18" PEWTER FRAME
WHS NO 001 WHS LOC G50

FREEZE ON-HAND BALANCES BY CYCLE

PROK NAME	INV.PROK PPI.FREEZE010
PROGRAM NAME	INV.BP VALDPI2
	INV.BP PI.CHECK010
	INV.BP PI.FREEZE.PROD010
	INV.BP PI.FREEZE.LOT010
SELECTION	MENU-9
SELECTION NUMBER	4
FILES ACCESSED	OPERATOR
	PI.TAG.GEN
	PROD.DET
	LOT

OVERVIEW

Once all inventory transactions have been updated, this procedure captures the on-hand inventory prior to the count of the inventory. After the physical count has been taken, normal order entry and invoicing procedures may be used even if the physical inventory has not been posted.

OPERATING INSTRUCTIONS**FREEZE ON HAND BALANCES IN PROD.DET AND LOT FILES****DO YOU WANT TO FREEZE THE ON HAND BALANCES (Y/N):**

Enter 'N' to return to the main selector, enter 'Y***' to freeze the on-hand balances.

**ENTER CYCLE COUNT NUMBER (4N), 'ALL' FOR ALL CYCLE COUNTS
'R' FOR RANGE OF CYCLE COUNTS, 'S' FOR SELECTIVE CYCLE COUNTS
OR 'END'**

If you enter 'R' for range of cycle counts the following occurs:

**ENTER BEGINNING CYCLE COUNT NUMBER (4N) OR 'END'
ENTER ENDING CYCLE COUNT NUMBER (4N) OR 'END'**

Enter the beginning and ending cycle count numbers or 'END' to return to the selector.

FREEZE ON-HAND BALANCES BY CYCLE**OPERATING INSTRUCTIONS (Continued)**

If you enter 'S' for selective cycle counts the following occurs:

**ENTER CYCLE COUNT NUMBERS SEPARATED BY SEMI-COLONS (;) OR
'END'**

If you enter a cycle count number or select 'ALL' for all the following occurs:

NOW FREEZING ON HAND QUANTITIES IN PROD.DET FILE

NOW FREEZING ON HAND QUANTITIES IN LOT FILE

PHYSICAL INVENTORY/CYCLE COUNT ENTRY

Concord for Windows 95

File Edit Settings File Transfer Help

PHYSICAL INVENTORY COUNT ENTRY -BATCH CONTROL

CYCLE:----- NUM TAGS :
WHSE: NUM PIECES:

TAG #	ITEM #	DESCRIPTION	LOT / REEL#	WHS-LOC	COUNT	CNTR
-------	--------	-------------	-------------	---------	-------	------

OR VE MAINT EMAIL AUDIT CAPTION VIEW Br
HELP END INSERT DELETE PREV PG NEXT PG INQUIRY ABORT k

PHYSICAL INVENTORY/CYCLE COUNT ENTRY

PROK NAME	INV.PROK PPI.TAG.ENTRY010.1	
PROGRAM NAME	INV.BP PI.TAG.ENTRY010.1	
SELECTION	MENU-9	
SELECTION NUMBER	5	
FILES ACCESSED	BATCH.CONT	ALPHA.PROD
	PI.TAG	FINDER
	PI.TAG.GEN	SEQ.CONT
	PI.TAG.GEN.XREF	PARAMETER
	LOT	
	LOT.XREF	
	WAREHOUSE	
	PROD.MAST	
	PROD.DET	

OVERVIEW

This procedure allows the operator to enter counts by tag numbers, regardless of the method the tag was created. This procedure provides for optional use of batch entry controls to minimize entry errors.

The system also allows cycle counting without the use of pre-printed tags.

OPERATING INSTRUCTIONS

PHYSICAL INVENTORY TAGS ENTRY

HIT RTN TO CON'T, 'END', OR 'RPT' FOR BATCH.CONT SUMMARY:

If you hit 'RETURN' you are now in entry mode:

DO YOU WISH TO USE BATCH CONTROLS? (CR/N/END):

If you select 'N' you will continue with physical inventory count entry and if you hit 'RETURN' for batch controls and this is a new batch the following occurs:

NOT ON FILE. IS THIS A NEW BATCH (CR/N) ?

Hit 'RETURN' if this is a new batch.

PHYSICAL INVENTORY/CYCLE COUNT ENTRY**OPERATING INSTRUCTIONS (Continued)****ENTER BATCH NUMBER:**

Enter the batch number.

ENTER THE NUMBER OF TAGS IN THIS BATCH:

Enter the number of tags in this batch.

ENTER THE NUMBER OF PIECES IN THIS BATCH:

Enter the number of pieces (on-hand) in this batch.

After entering your physical inventory count entry and your batch is out of balance you will receive the following message:

	CONTROL	APPLIED	DIFF
BATCH TOTALS - TOTAL TAGS			
BATCH IS OUT OF BALANCE			
HIT RETURN TO CONTINUE WITH BATCH OR 'END' TO CHECK FIGURES:			

CYCLE:

Enter cycle.

WHSE:

The warehouse number and name will display.

TAG#

Enter the tag number.

ITEM#

The product number and description will display.

PHYSICAL INVENTORY/CYCLE COUNT ENTRY**OPERATING INSTRUCTIONS (Continued)****LOT/REEL#**

If this is a lot or reel product enter the lot or reel number.

WHS-LOC

If there is a warehouse locations enter it at this time.

COUNT

Enter the physical count (on-hand quantity).

CNTR

Enter the counters initials.

COST

Enter the cost of the product.

When your completed entering the physical inventory cycle counts at the tag number prompt enter 'END'.

HIT RETURN TO ENTER MORE TAGS, OR 'END':

Enter 'END', the following will occur:

TAG ENTRY COMPLETION REPORT**HIT RETURN TO PRINT BATCH CONTROL SUMMARY OR 'END':**

Hit 'RETURN' to print the batch control summary or 'END' to return to the selector.

PHYSICAL INVENTORY - BATCH CONTROL LISTING

PHYSICAL INVENTORY - - BATCH CONTROL LISTING 02:27:32pm 02 MAR 1998

BATCH#	WHSE	# OF TAGS CONT	# OF TAGS	ENTER TAG DIFF	# OF PCS CONT	# OF PCS	ENTER PCS DIFF
152301	001	48	50	2	100	100	0
152305	001	10	10	0	52	57	5
152602	001	80	79	1	150	150	0
152612	001	53	53	0	100	100	0
152630	002	120	119	1	75	100	25
152890	003	45	40	5	25	24	1
152890	001	62	68	6	32	32	0
160000	003	78	78	0	45	46	1

8 records listed

MISSING P.I. TAG REPORT

PROK NAME	INV.PROK PPI.MISS.TAG010
SELECTION	MENU-9
SELECTION NUMBER	6
FILES ACCESSED	PI.TAG

OVERVIEW

This report lists all tags that do not have a count entered against them. It is meant to be a means of accounting for all tags that were created but not entered.

OPERATING INSTRUCTIONS**PHYSICAL INVENTORY MISSING TAG LISTING****HIT <NL> TO CONTINUE OR 'END':**

Hit 'RETURN' to continue or 'END' to return to the selector.

**ENTER CYCLE COUNT NUMBER (4N), 'ALL' FOR ALL CYCLE COUNTS
'R' FOR RANGE OF CYCLE COUNTS, 'S' FOR SELECTIVE CYCLE COUNTS
OR 'END'**

If you enter 'R' for range of cycle counts the following occurs:

**ENTER BEGINNING CYCLE COUNT NUMBER (4N) OR 'END'
ENTER ENDING CYCLE COUNT NUMBER (4N) OR 'END'**

Enter the beginning and ending cycle count numbers or 'END' to return to the selector.

If you enter 'S' for selective cycle counts the following occurs:

**ENTER CYCLE COUNT NUMBERS SEPARATED BY SEMI-COLONS (;) OR
'END'**

If you enter a cycle count number or select 'ALL' for all the following occurs:

NOW SORTING PI.TAG FILE

MISSING P.I. TAG REPORT

PAGE 1

PHYSICAL INVENTORY MISSING INVENTORY TAG LISTING

2:42:03pm

02 MAR 1998

WHSE	CYCLE.CTR	TAG.NO	A.PROD.NO	DESC	LOT.NO	WHSE LOC	COUNTER
001	1	173256	047	SHOWER CURTAIN HOOKS		B75	TBN
001	1	175623	050	SOAP DISPENSER		N54	GMS
001	5	185230	101	RED PLASTIC DESK			TBN
001	5	185231	102	BLUE PLASTIC DESK		A830	HSK
001	2	179630	STUSSY	STUSSY DIRECTOR CHAIR		C7	JKL
002	1	145230	CAIN	CAIN CAR COVER		S45	TBN
002	7	123600	TBN001	18" PEWTER FRAME		D70	YKS

7 records listed

PHYSICAL INVENTORY TAG INQUIRY

PHYSICAL INVENTORY TAG MAINTENANCE								
TAG NO. 173883								
1.WHSE 2.A.PROD.NO 3.DESC 4.REEL/LOT# 6.WHSE-LOC 7.POST-DATE 8.QTY.COINT 9.COUNTER 10.PO.NO 11.BAICH# 12.COST 13.CRE.DATE	001 101 RED PLASTIC DESK 5.REEL/LOT EXP DATE: a 07/31/97							
ENTER LINE# TO CHANGE, "DELETE" TO DELETE, OR "0" TO ACCEPT:								
HELP	END	INSERT	DELETE	PRV PG	NEXT PG	INQUIRY	ABORT	Br k

PHYSICAL INVENTORY TAG INQUIRY

PROGRAM NAME	SSS.BP GEN.MASTER PI.TAG.INQ010 PI.TAG.MIANT.OPEN010
SELECTION	MENU-9
SELECTION NUMBER	7
FILES ACCESSED	ALPHA.PROD PI.TAG PROD.MAST PROD.DET LOT LOT.XREF WAREHOUSE PARAMETER

OVERVIEW

This inquiry is provided to inquire into the current status of a tag. It displays the item number, description, warehouse number, tag creation date, count posting date, count frozen on-hand, counter initials, purchase order number, update indicator, lot/reel#, warehouse location and cycle code information is displayed.

OPERATING INSTRUCTIONS**TAG #:**

Enter tag number.

A.PROD.NO

The product number will display.

A.PROD.DESC

The product description will display.

WHSE

The warehouse number and name will display.

PHYSICAL INVENTORY TAG INQUIRY**OPERATING INSTRUCTIONS (Continued)****CREATE-DATE**

The tag creation date will display.

POST-DATE

The count posting date will display.

QUANTITY

The entered count will display.

ONHAND

The frozen on-hand quantity will display.

COUNTER INIT

The counter's initials will display.

PO.NO

The purchase order number will display.

UPDATE.IND

Update indicator will display (i.e., T = tags generated P = tags printed).

LOT/REEL#

Lot/Reel number will display.

WSH.LOC

Warehouse location will display.

PHYSICAL INVENTORY TAG INQUIRY**OPERATING INSTRUCTIONS (Continued)****CYCLE CODE**

The cycle code will display.

HIT <CR> FOR NEW TAG NUMBER, OR "END" TO EXIT:

Hit 'RETURN' for new tag number or 'END' to return to the selector.

PHYSICAL INVENTORY TAG MAINTENANCE

Concord for Windows 95
_ _ X

File Edit Settings File Transfer Help

PHYSICAL INVENTORY TAG MAINTENANCE

TAG NO. 173883

<p style="font-family: monospace;">1.WHSE 2.A.PROD.NO 3.DESC 4.REEL/LOT# 6.WHSE-LOC 7.POST-DATE 8.QTY.COINT 9.COUNTER 10.PO.NO 11.BAICH# 12.COST 13.CRE.DATE</p>	<p style="font-family: monospace;">001 101 RED PLASTIC DESK 5.REEL/LOT EXP DATE: a 07/31/97</p>
--	---

ENTER LINE# TO CHANGE, "DELETE" TO DELETE, OR "0" TO ACCEPT:

HELP

END

INSERT

DELETE

PRV PG

NEXT PG

INQUIRY

ABORT

Br
k

PHYSICAL INVENTORY TAG MAINTENANCE

PROGRAM NAME	SSS.BP GEN.MASTER PI.TAG.INQ010 PI.TAG.MIANT.OPEN010 PI.TAG.MAINT.READ010 PO.TAG.MAINT.EXIT010
SELECTION	MENU-9
SELECTION NUMBER	8
FILES ACCESSED	ALPHA.PROD PROD.MAST PROD.DET PI.TAG LOT LOT.XREF WAREHOUSE PARAMETER

OVERVIEW

Physical inventory tag maintenance allows the operator the option to change any data relating to a given physical inventory tag. This procedure is useful for correcting any count entry errors.

OPERATING INSTRUCTIONS**WHSE**

The warehouse number will display.

A.PROD.NO

The product number will display.

DESC

The product description will display.

REEL/LOT#

Lot/Reel number will display.

PHYSICAL INVENTORY TAG MAINTENANCE**OPERATING INSTRUCTIONS (Continued)****REEL/LOT EXP DATE:**

Reel/Lot expiration date will display.

WHSE-LOC

Warehouse location will display.

POST-DATE

The count posting date will display.

QTY.COUNT

The entered count will display.

COUNTER

The counter's initials will display.

PO.NO

The purchase order number will display.

BATCH#

If batch entry was used the batch number will display.

COST

The product cost will display.

CRE.DATE

The tag creation date will display.

PHYSICAL INVENTORY TAG MAINTENANCE

OPERATING INSTRUCTIONS (Continued)

ENTER LINE# TO CHANGE, 'DELETE' TO DELETE, OR '0' TO ACCEPT:

Enter line number to change, "DELETE" to delete or "0" to accept.

PHYSICAL INVENTORY TAG LIST

PROK NAME	INV.PROK PPI.TAG.LIST010
SELECTION	MENU-9
SELECTION NUMBER	9
FILES ACCESSED	PI.TAG

OVERVIEW

This is a listing of proof of all the tag counts entered. All tags that have been entered appear on this report. The report can be run in four sequences:

1. Tag number
2. Counter
3. Warehouse location
4. Item number

OPERATING INSTRUCTIONS**PHYSICAL INVENTORY TAG/ITEM LOCATION**

1. **SORT BY TAG NUMBER**
2. **SORT BY COUNTER**
3. **SORT BY WAREHOUSE LOCATION**
4. **SORT BY ITEM NUMBER**

**ENTER CYCLE COUNT NUMBER (4N), 'ALL' FOR ALL CYCLE COUNTS
'R' FOR RANGE OF CYCLE COUNTS, 'S' FOR SELECTIVE CYCLE COUNTS
OR 'END'**

If you enter 'R' for range of cycle counts the following occurs:

**ENTER BEGINNING CYCLE COUNT NUMBER (4N) OR 'END'
ENTER ENDING CYCLE COUNT NUMBER (4N) OR 'END'**

Enter the beginning and ending cycle count numbers or 'END' to return to the selector.

If you enter 'S' for selective cycle counts the following occurs:

**ENTER CYCLE COUNT NUMBERS SEPARATED BY SEMI-COLONS (;) OR
'END'**

PHYSICAL INVENTORY TAG LIST

OPERATING INSTRUCTIONS

If you enter a cycle count number or select 'ALL' for all the following occurs:

NOW SELECTING 'PI.TAG'FILE - - - PLEASE WAIT

NOTE HOLD ENTRY AND PRESS <RTN> TO CONTINUE:

PHYSICAL INVENTORY TAG LIST

PAGE 1

PHYSICAL INVENTORY TAG/ITEM LISTING FOR CYCLE 005 - BY TAG NUMBER 03:14:52pm 02 MAR 1998

TAG NO.	A.PROD.NO	DESC 1	LOTNO	WHSE LOC	QTY	POST DATE	COUNTER	PO#
152360	101	RED PLASTIC DESK		B25	15	02/28/98	TBN	01120223
152690	102	BLUE PLASTIC DESK		B27	25	02/28/98	TBN	01120233
152420	STUSSY	STUSSY DIRECTOR CHAIR		N52	30	03/01/98	LRM	01131253
153000	CAIN	CAIN CAR COVER		K4Q	17	03/01/98	PKL	01130520
160000	TBN001	18" PEWTER FRAME		J78	63	03/02/98	RBN	01523100
161001	ARWK-PO	AIRWICK AIR FRESHENER		O80	42	03/02/98	KPL	01140320

6 records listed.

PHYSICAL INVENTORY VARIANCE UPDATE

PROK NAME	INV.PROK PPI.VAR.UPD010.1
PROGRAM NAME	INV.BP PI.VAR.UPD1.PROD006
	INV.BP PI.VAR.UPD2.010
SELECTION	MENU-9
SELECTION NUMBER	10
FILES ACCESSED	PI.TAG
	PROD.DET
	LOT
	LOT.XREF
	WAREHOUSE
	PARAMETER

OVERVIEW

The variance update calculates differences between the on-hand frozen inventory and the total counts of all tags for the same item.

OPERATING INSTRUCTIONS**PHYSICAL INVENTORY VARIANCE UPDATE****HIT <NL> TO CONTINUE OR 'END':**

Hit 'RETURN' to continue or 'END' to return to the selector.

**ENTER CYCLE COUNT NUMBER (4N), 'ALL' FOR ALL CYCLE COUNTS
'R' FOR RANGE OF CYCLE COUNTS, 'S' FOR SELECTIVE CYCLE COUNTS
OR 'END'**

If you enter 'R' for range of cycle counts the following occurs:

**ENTER BEGINNING CYCLE COUNT NUMBER (4N) OR 'END'
ENTER ENDING CYCLE COUNT NUMBER (4N) OR 'END'**

Enter the beginning and ending cycle count numbers or 'END' to return to the selector.

PHYSICAL INVENTORY VARIANCE UPDATE**OPERATING INSTRUCTIONS (Continued)**

If you enter 'S' for selective cycle counts the following occurs:

**ENTER CYCLE COUNT NUMBERS SEPARATED BY SEMI-COLONS (;) OR
'END'**

If you enter a cycle count number or select 'ALL' for all the following occurs:

NOW CLEARING VARIANCE FIELD IN PROD.DET FILE

NOW CLEARING VARIANCE FIELD IN LOT FILE

NOW UPDATING PROD.DET AND LOT FILE FROM PI.TAG FILE

PHYSICAL INVENTORY VARIANCE REPORT

PROK NAME	INV.PROK PPI.VAR.RPT.010
SELECTION	MENU-9
SELECTION NUMBER	11
FILES ACCESSED	PROD.DET

OVERVIEW

This report is produced by warehouse by product and shows the physical count, ties on hand at the time of the freeze and the variance.

OPERATING INSTRUCTIONS

PHYSICAL INVENTORY VARIANCE REPORT

HIT <NL> TO CONTINUE OR 'END':

Hit 'RETURN' to continue or 'END' to return to the selector.

**ENTER CYCLE COUNT NUMBER (4N), 'ALL' FOR ALL CYCLE COUNTS
'R' FOR RANGE OF CYCLE COUNTS, 'S' FOR SELECTIVE CYCLE COUNTS
OR 'END'**

If you enter 'R' for range of cycle counts the following occurs:

**ENTER BEGINNING CYCLE COUNT NUMBER (4N) OR 'END'
ENTER ENDING CYCLE COUNT NUMBER (4N) OR 'END'**

Enter the beginning and ending cycle count numbers or 'END' to return to the selector.

If you enter 'S' for selective cycle counts the following occurs:

**ENTER CYCLE COUNT NUMBERS SEPARATED BY SEMI-COLONS (;) OR
'END'**

If you enter a cycle count number or select 'ALL' for all the following occurs:

NOW SORTING PROD.DET FILE

NOTE HOLD ENTRY AND PRESS <RTN> TO CONTINUE:

PHYSICAL INVENTORY VARIANCE REPORT

PAGE 1 PHYSICAL INVENTORY VARIANCE REPORT FOR CYCLE 055 3:40:12pm 02 Mar 1998

CC.CTR	WARE.LOC	PRODUCT/DESCRIPTION	LST.CST	OH.PHYS	PHYS.CNT	PHYS.VAR	OH VALUE	CNT COST	VALUE	VAR
1	C25	047 SHOWER CURTAIN HOOKS	2.40	100	100	0	.20	.20		0.00
1	V31	101 RED PLASTIC DESK	100.00	50	51	1	5000.00	5100.00	100.00	0
1	M50	STUSSY STUSSY DIRECTOR CHAIR	210.00	20	20	0	4200.00	4200.00	4200.00	0
1	I43	TBN001 18" PEWTER FRAME	15.00	30	35	5	450.00	525.00		75.00
1	L20	CAIN CAIN CAR COVER	60.00	25	24	1	1500.00	1440.00		60.00

5 records listed

PHYSICAL INVENTORY REPORT OF ITEMS NOT COUNTED

PROK NAME	INV.PROK PPI.ITEMS.NOT.CNTD.RPT010
SELECTION	MENU-9
SELECTION NUMBER	12
FILES ACCESSED	PROD.DET

OVERVIEW

This report is produced by cycles and shows the product, product description, last cost, on-hand physical (frozen quantity), physical count and on-hand value of the product.

OPERATING INSTRUCTIONS**PHYSICAL INVENTORY - REPORT OF ITEMS NOT COUNTED****HIT <NL> TO CONTINUE OR 'END':**

Hit 'RETURN' to continue or 'END' to return to the menu.

**ENTER CYCLE COUNT NUMBER (4N), 'ALL' FOR ALL CYCLE COUNTS
'R' FOR RANGE OF CYCLE COUNTS, 'S' FOR SELECTIVE CYCLE COUNTS
OR 'END'**

If you enter 'R' for range of cycle counts the following occurs:

**ENTER BEGINNING CYCLE COUNT NUMBER (4N) OR 'END'
ENTER ENDING CYCLE COUNT NUMBER (4N) OR 'END'**

Enter the beginning and ending cycle count numbers or 'END' to return to the selector.

If you enter 'S' for selective cycle counts the following occurs:

**ENTER CYCLE COUNT NUMBERS SEPARATED BY SEMI-COLONS (;) OR
'END'**

If you enter a cycle count number or select 'ALL' for all the following occurs:

NOW SORTING PROD.DET FILE**NOTE HOLD ENTRY AND PRESS <RTN> TO CONTINUE:**

PHYSICAL INVENTORY REPORT OF ITEMS NOT COUNTED

PAGE 1

PHYSICAL INVENTORY ITEMS NOT COUNTED FOR CYCLE 055

03:51:12pm

02 MAR 1998

CC.CTR	WARE.LOC	PRODUCT/DESCRIPTION	LST.CST	OH.PHYS	PHYS.CONT	OH.VALUE
1	M52	101 RED PLASTIC DESK	100.00	50	50	5000.00
1	I43	102 BLUE PLASTIC DESK	100.00	60	55	5500.00
1	F78	STUSSY STUSSY DIRECTOR CHAIR	200.00	30	32	6400.00
1	D08	CAIN CAIN CAR COVER	75.00	100	70	525.00
1	R32	TBN001 18" PEWTER FRAME	25.00	75	75	187.50

5 records listed

NEGATIVE ON-HAND REPORT

PROK NAME	INV.PROK PPI.NEG.RPT.010
SELECTION	MENU-9
SELECTION NUMBER	13
FILES ACCESSED	PROD.DET

OVERVIEW

This report determines if, when the physical variance applied to the current on-hand, will cause a negative on hand balance.

OPERATING INSTRUCTIONS

PHYSICAL INVENTORY ITEMS BELOW ZERO REPORT

HIT <NL> TO CONTINUE OR 'END':

Hit 'RETURN' to continue or 'END' to return to the selector.

**ENTER CYCLE COUNT NUMBER (4N), 'ALL' FOR ALL CYCLE COUNTS
'R' FOR RANGE OF CYCLE COUNTS, 'S' FOR SELECTIVE CYCLE COUNTS
OR 'END'**

If you enter 'R' for range of cycle counts the following occurs:

**ENTER BEGINNING CYCLE COUNT NUMBER (4N) OR 'END'
ENTER ENDING CYCLE COUNT NUMBER (4N) OR 'END'**

Enter the beginning and ending cycle count numbers or 'END' to return to the selector.

If you enter 'S' for selective cycle counts the following occurs:

**ENTER CYCLE COUNT NUMBERS SEPARATED BY SEMI-COLONS (;) OR
'END'**

If you enter a cycle count number or select 'ALL' for all the following occurs:

NOW SORTING PROD.DET FILE

NOTE HOLD ENTRY AND PRESS <RTN> TO CONTINUE:

NEGATIVE ON-HAND REPORT

PAGE 1

PHYSICAL INVENTORY ITEMS BELOW ZERO REPORT

01:31:16pm

03 Mar 1998

CC.CTR	PRODUCT/DESCRIPTION	WARE.LOC	ON HAND	OH PHYS	PHY VAR	NEG OH
1	E-C046D SILK BLK BRD	N05	- 64	- 64	0	- 64
1	OAK-DESK OAK EXECUTIVE DESK	I90	-100	-100	0	-100
1	101 RED PLASTIC DESK	O85	- 50	10	-40	- 40
1	STUSSY STUSSY DIRECTOR CHAIR	L9	-25	- 25	0	- 25

4 records selected

PHYSICAL INVENTORY ON-HAND UPDATE *PROCEDURE NOT
REVERSIBLE *****

PROK NAME	INV.PROK PPI.OH.UPD010
PROGRAM NAME	INV.BP VALDPI2
	INV.BP PI.CHECK010
	INV.BP PI.OH.UPD010
	INV.BP PI.OH.UPD.LOT010
SELECTION	MENU-9
SELECTION NUMBER	14
FILES ACCESSED	OPERATOR
	PI.TAG.GEN
	PROD.DET
	PROD.MAST
	INV.AUDIT
	PARAMETER
	LOT

OVERVIEW

This procedure applies the variance to the current on-hand figure, bringing the physical inventory and inventory into balance. **IT IS A FINAL UPDATE AND CANNOT BE REVERSED.** Be certain all the inventory information is accurate before running this procedure.

OPERATING INSTRUCTIONS

PHYSICAL INVENTORY ONHAND UPDATE

*****WARNING!! THIS PROCESS IS -- NOT — REVERSIBLE*****

*****MAKE SURE YOU HAVE JUST RUN THE VARIANCE UPDATE*****

*****PROGRAMS BEFORE YOU RUN THIS PROCEDURE OTHERWISE*****

*****YOUR ONHAND QUANTITIES WILL BE INCORRECTLY UPDATED*****

DO YOU WANT TO RUN THIS UPDATE PROGRAM? (Y/N/END):

Enter 'N' or 'END' to return to the main selector, enter 'Y***' to continue with this program:

PHYSICAL INVENTORY ON-HAND UPDATE *PROCEDURE NOT REVERSIBLE *******OPERATING INSTRUCTIONS (Continued)**

**ENTER CYCLE COUNT NUMBER (4N), 'ALL' FOR ALL CYCLE COUNTS
'R' FOR RANGE OF CYCLE COUNTS, 'S' FOR SELECTIVE CYCLE COUNTS
OR 'END'**

If you enter 'R' for range of cycle counts the following occurs:

**ENTER BEGINNING CYCLE COUNT NUMBER (4N) OR 'END'
ENTER ENDING CYCLE COUNT NUMBER (4N) OR 'END'**

Enter the beginning and ending cycle count numbers or 'END' to return to the selector.

If you enter 'S' for selective cycle counts the following occurs:

**ENTER CYCLE COUNT NUMBERS SEPARATED BY SEMI-COLONS (;) OR
'END'**

If you enter a cycle count number or select 'ALL' for all the following occurs:

PHYSICAL INVENTORY - ON HAND UPDATE TO PROD.DET FILE

PHYSICAL INVENTORY - ON HAND UPDATE TO LOT FILE

PHYSICAL INVENTORY PURGE *PROCEDURE NOT REVERSIBLE *****

PROK NAME	INV.PROK PPI.TAG.GEN.PURGE010
PROGRAM NAME	INV.BP VALDPI2
	INV.BP PI.TAG.GEN.PURGE010
SELECTION	MENU-9
SELECTION NUMBER	15
FILES ACCESSED	OPERATOR
	PI.TAG.GEN
	PI.TAG.GEN.XREF

OVERVIEW

This program purges completed cycle count information from the Pi.Tag.Gen and the Pi.Tag.Gen.Xref files. **THIS PROCEDURE IS NOT REVERSIBLE.**

OPERATING INSTRUCTIONS**PHYSICAL INVENTORY PURGE**

THIS PROCESS PURGES COMPLETED CYCLE COUNT INFORMATION FROM THE PI.TAG.GEN & PI.TAG.GEN.XREF FILES. IT IS NOT REVERSIBLE!!!

DO YOU WANT TO RUN THIS PURGE PROGRAM? (Y/N/END):

Enter 'N' or 'END' to return to the main selector, enter 'Y***' to continue with this program:

ENTER THE PURGE DATE (2N/2N/2N). ALL COMPLETED CYCLE COUNTS PRIOR TO THIS DATE WILL BE PURGED FROM THE SYSTEM

**THE SYSTEMS HOUSE, INC.
MASTER DISTRIBUTION SYSTEM DOCUMENTATION**

I N D E X

Batch Control	22,24
Create Cycles for Physical Inventory Count	10
End of Day	7
Freeze On Hand Balances by Cycle	19
Generate Tags.	3
Lot File.	3,12,19,20,40,48
Maintenance	7
Missing P.I. Tag Report	26
Negative On Hand Report	45
On Hand Quantity	7,15,24,30
Parameter File	3
Partial Physical Inventory	1
Physical Count	5
Physical Inventory Cycle Count Entry	22
Physical Inventory Cycle Inquiry	13
Physical Inventory Overview	2
Physical Inventory Procedural Flow	3
Physical Inventory On Hand Update	6
Physical Inventory Tag Maintenance	5
Create Cycles for Physical Inventory Count	3
Freeze On-Hand Balances by Cycle	4
Missing Physical Inventory Tag Report	4
Negative On Hand Report	6
Physical Inventory Cycle Inquiry	3
Physical Inventory Tag List	5
Physical Inventory Variance Report	6
Physical Inventory Variance Update	5
Physical Inventory/Cycle Count Entry	4
Print Physical Inventory Tags	3
Verification of Inventory Levels Prior to Freezing of On Hand Balances	4

THE SYSTEMS HOUSE, INC.
MASTER DISTRIBUTION SYSTEM DOCUMENTATION

I N D E X

Physical Inventory Procedures	7
Physical Inventory Purge	49
Print Physical Inventory Tags	16
Physical Inventory Tag Inquiry	29
Physical Inventory Tag List	36
Physical Inventory Tag Maintenance	33
Product Class	2,3,10,11
Product Detail	7,10,12
Reel Number	24,30,33
Status Codes	11
Tag File	2, 17
Update Indicator	31
Variance Report	7,41
Variance Update	5, 39