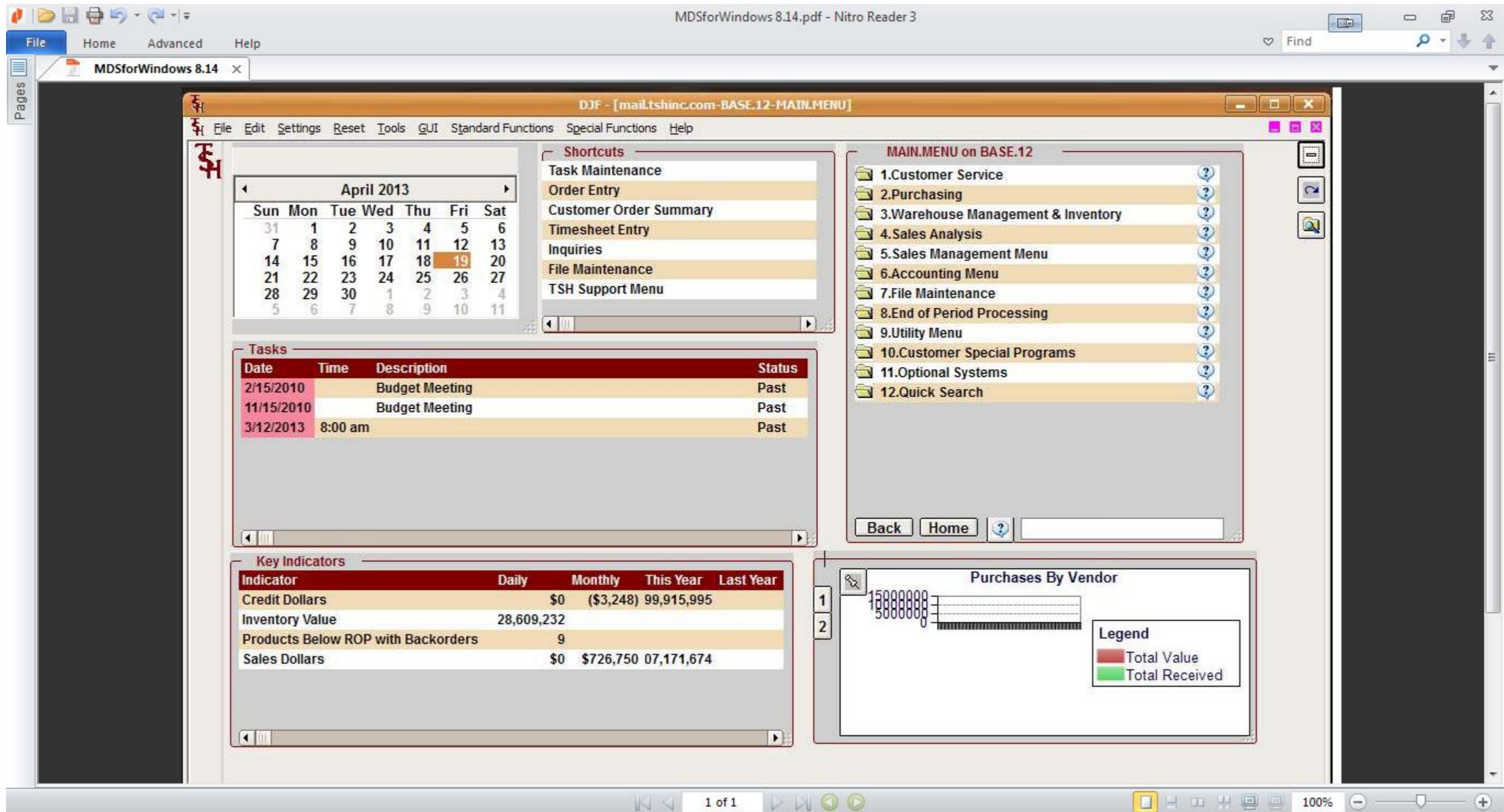


## Procedure to Print Screens From MDS for Larger Width/Wide Screen Monitors

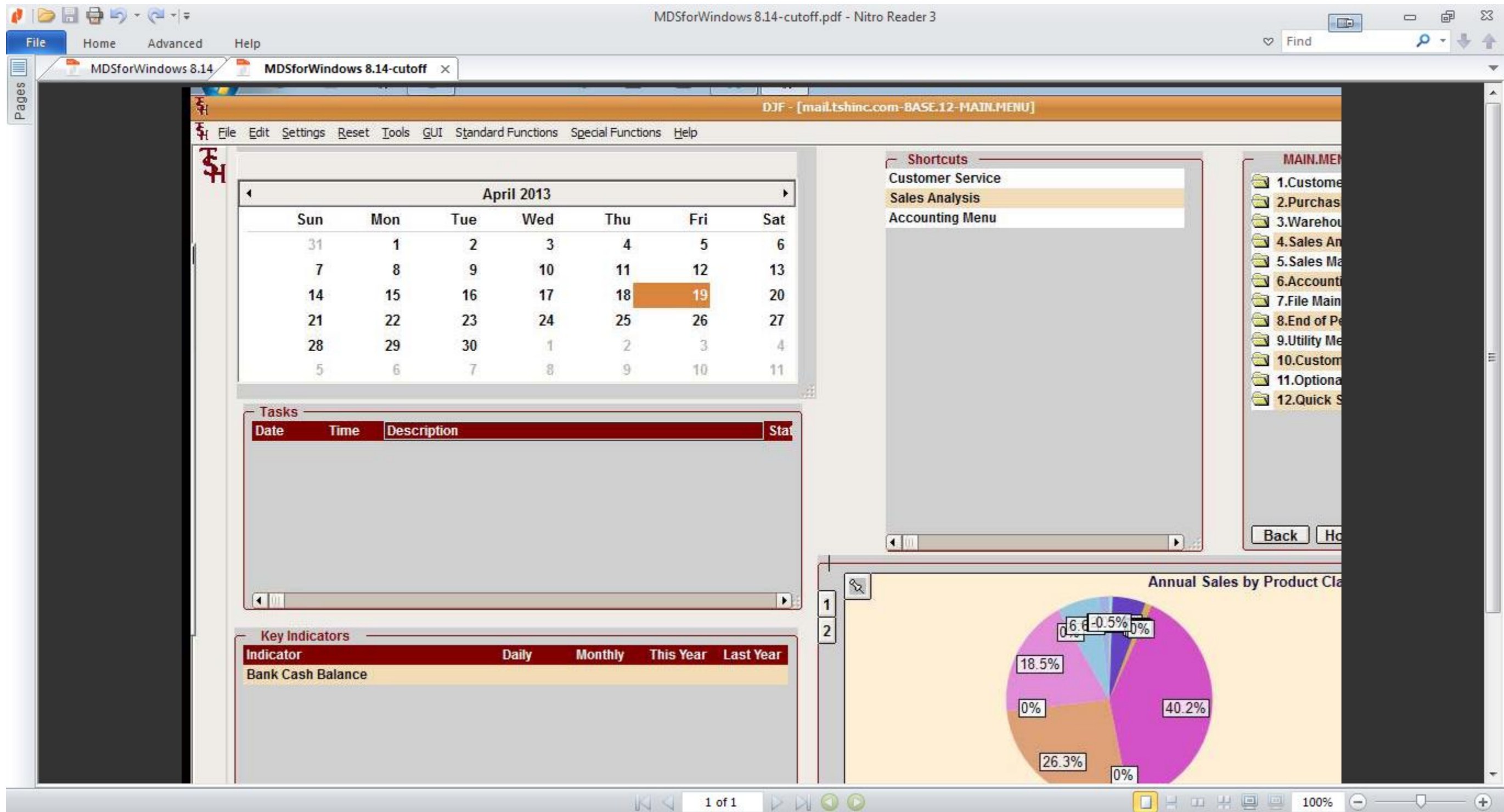
DJF 4/19/13

Overview: Because printers are setup for 8.5 x11 inches in a portrait mode for most people's computer's – when doing a print screen – printing will come out cut off if your MDS session is larger than the paper width.

Normal Example:



When I change my MDS Session to take up the full screen the print screen does not print the entire application..



This is what was on the screen. Resolution of 1366X768

DJF - [mail.tshinc.com-BASE.12-MAIN.MENU]

File Edit Settings Reset Tools GUI Standard Functions Special Functions Help

April 2013

Sun	Mon	Tue	Wed	Thu	Fri	Sat
31	1	2	3	4	5	6
7	8	9	10	11	12	13
14	15	16	17	18	19	20
21	22	23	24	25	26	27
28	29	30	1	2	3	4
5	6	7	8	9	10	11

Tasks

Date	Time	Description	Status

Key Indicators

Indicator	Daily	Monthly	This Year	Last Year
Bank Cash Balance				

Shortcuts

- Customer Service
- Sales Analysis
- Accounting Menu

MAIN.MENU on BASE.12

- 1.Customer Service
- 2.Purchasing
- 3.Warehouse Management & Inventory
- 4.Sales Analysis
- 5.Sales Management Menu
- 6.Accounting Menu
- 7.File Maintenance
- 8.End of Period Processing
- 9.Utility Menu
- 10.Customer Special Programs
- 11.Optional Systems
- 12.Quick Search

Back Home ?

Annual Sales by Product Class

Product Class	Percentage
ACCT WORKSHEETS	0.5%
BATH ACCESSORIES	0%
CARPET CLEANERS	0%
DESK DRAWER KEYS	26.3%
Disk	0%
JEWELRY	6.6%
LLLLLLLLLLLLLLLLLLLLLLLLLLLLLLLLLX	0%
MEDICAL SPECIALTY	18.5%
MEDICAL SUPPLIES	40.2%

Legend

- ACCT WORKSHEETS
- BATH ACCESSORIES
- CARPET CLEANERS
- DESK DRAWER KEYS
- Disk
- JEWELRY
- LLLLLLLLLLLLLLLLLLLLLLLLLLLLLLLLLX
- MEDICAL SPECIALTY
- MEDICAL SUPPLIES

CONTACTS
HELP

MAINT
OK/END

DRILL
LDELETE

EXECINQ
PREV PG

REPORTS
NEXT PG

CAPT OFF
INQUIRY

VIEW
CANCEL

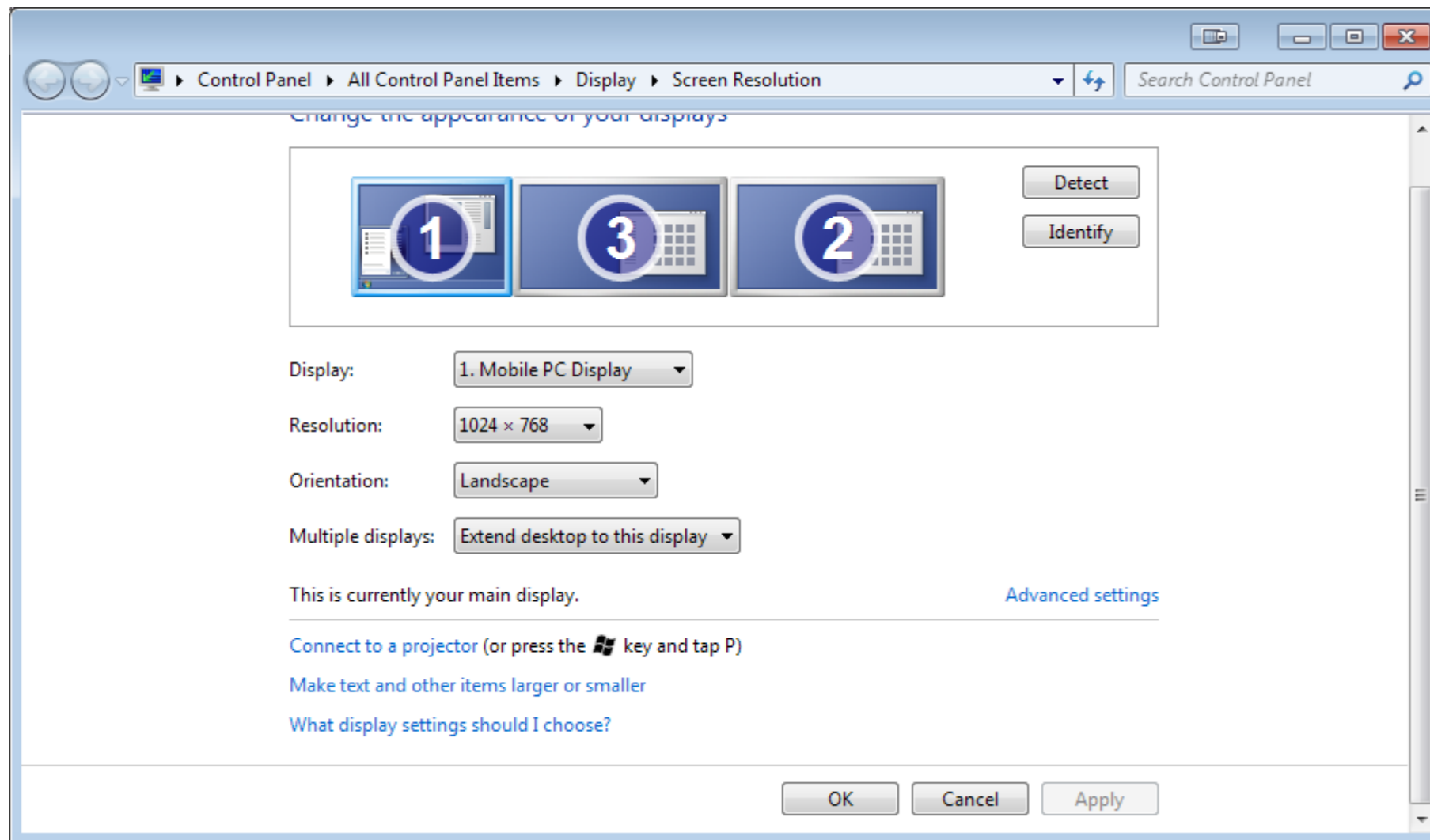
CRM.MENU
Off

VRM.MENU

Popup

Workaround 1. Change your Screen Resolution to Fit within normal printer sizes (example 1024x 768 ) for windows

Right hand click choose screen resolution



Workaround 2. Take a screen shot and print the screen shot using MS Paint or a similar image viewing/printing program

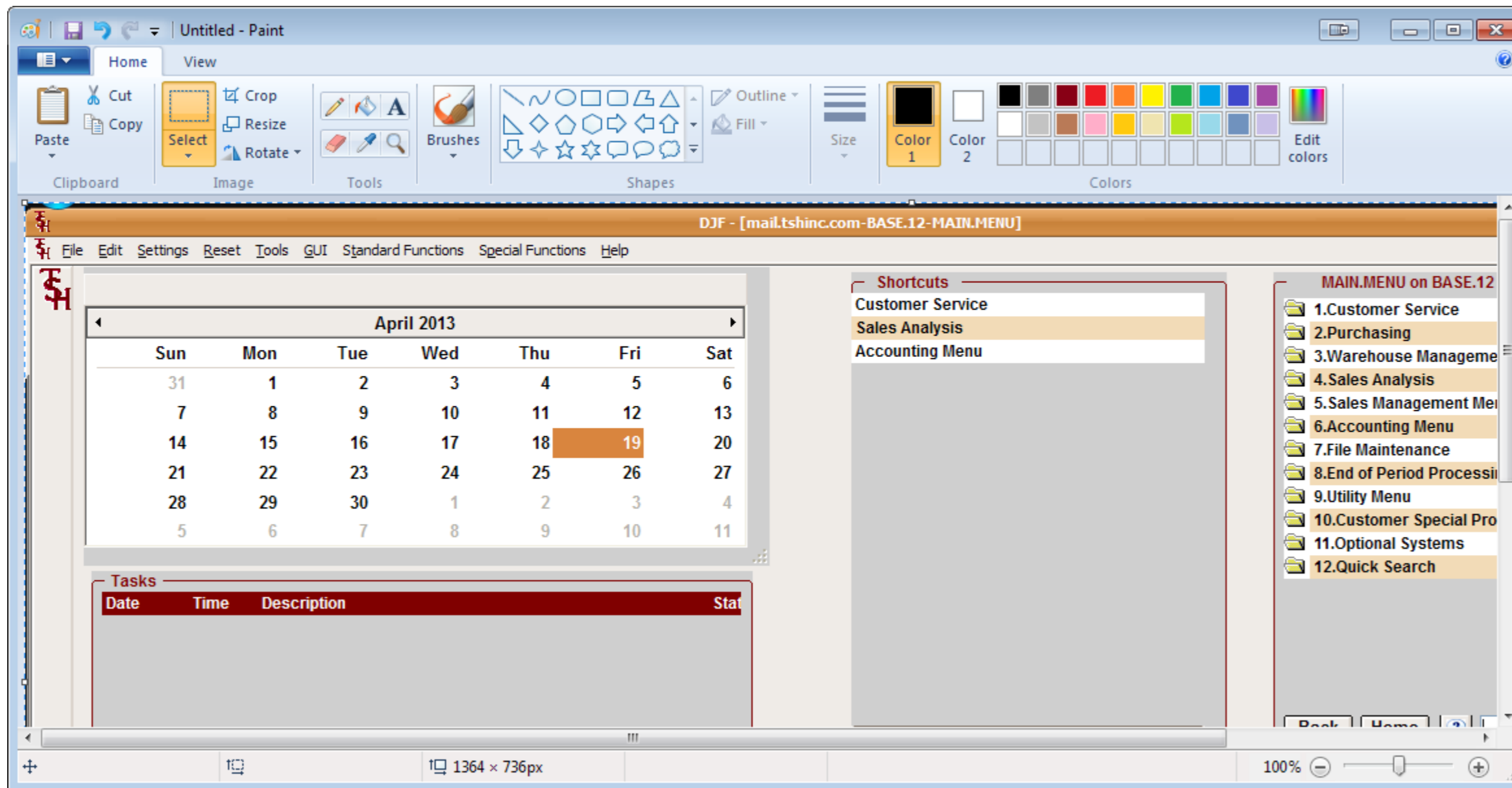
Hit CTRL-ALT-PrintScrn buttons at the same time..

This will take a screen shot of the active application (note you will need to focus or click on MDS for this to work)

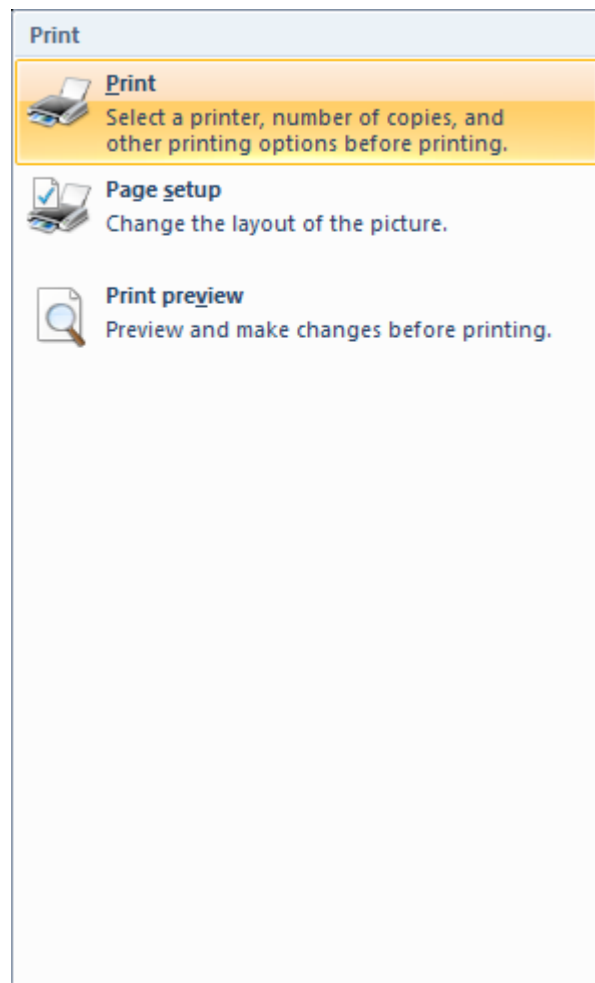
Once you have it in memory Run MS Paint (Microsoft Paint is free and comes with all version of windows)

Start → Run → mspaint.exe

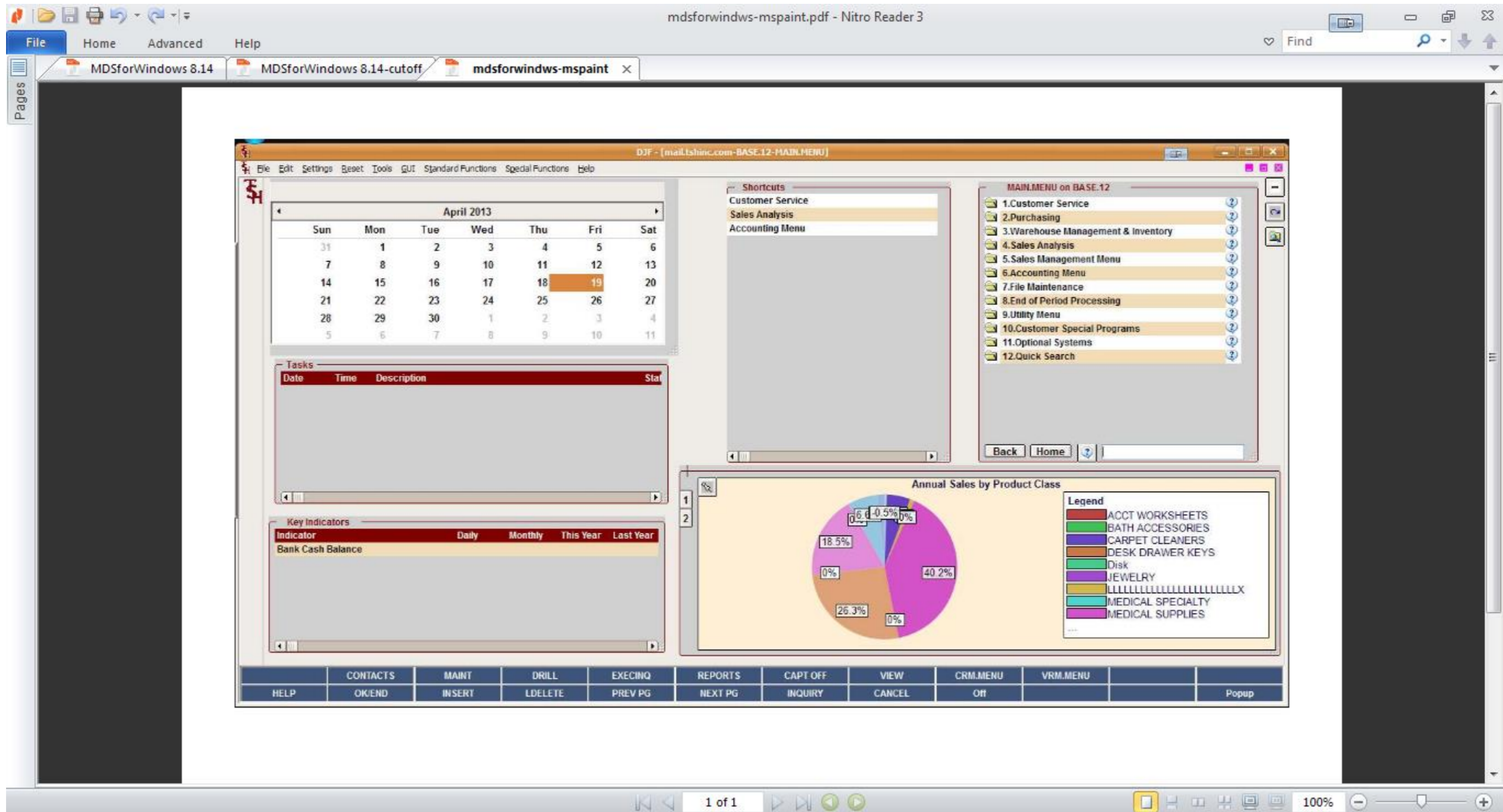
Click the Paste Button or type CTRL-V



Choose File → Print



This will create an image on your printer that is scaled down..



Workaround 3. Resize your MDS session to only take up a portion of the Screen so that it will fit on the paper.

This method requires you to manually resize your MDS Session to the 1024x768 limit and print screen then.

Moved your mouse over the side of the MDS session and drag it until it's small enough to print on a single screen.





Grabbing the top and left will allow you to resize.