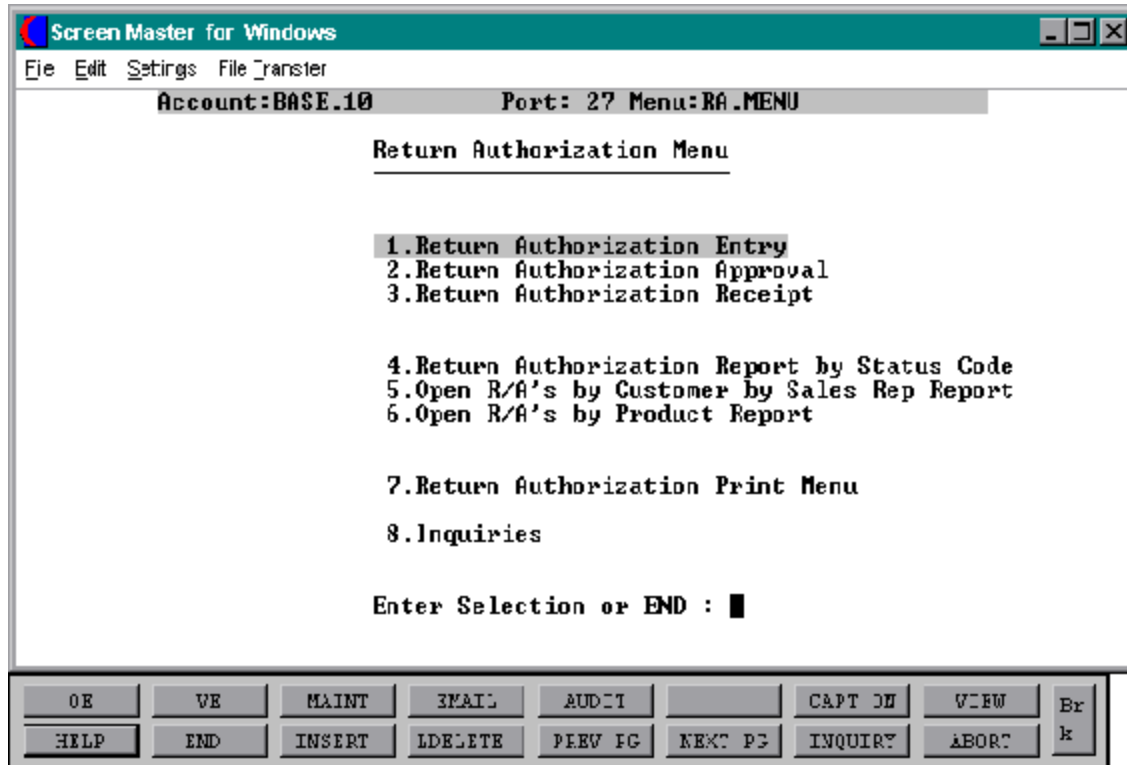


THE SYSTEMS HOUSE
MASTER DISTRIBUTION DOCUMENTATION

TABLE OF CONTENTS

RETURN AUTHORIZATION MAIN MENU	1
RETURN AUTHORIZATION OVERVIEW	2
RETURN AUTHORIZATION ENTRY	4
RETURN AUTHORIZATION APPROVAL	9
RETURN AUTHORIZATION RECEIPT	12
RETURN AUTHORIZATION REPORT BY STATUS CODE	14
OPEN R/A'S BY CUST BY SALES REP REPORT	19
OPEN R/A'S BY PRODUCT REPORT	21
RETURN AUTHORIZATION PRINT	24
RETURN AUTHORIZATION REPRINT BY RANGE	25
RETURN AUTHORIZATION REPRINT SPECIFIC NUMBERS	26
OPEN RETURN AUTHORIZATION INQUIRY	27
RETURN AUTHORIZATION INQUIRY BY CUSTOMER	29
RETURN AUTHORIZATION INQUIRY BY PRODUCT	31

RETURN AUTHORIZATION MAIN MENU



RETURN AUTHORIZATION OVERVIEW

INTRODUCTION

The return authorization module of TSH's Master Distribution System is designed to allow the ability to create, approve and receive merchandise. This module gives the user a way of keeping a record of all merchandise that has or will be returned to the warehouse for various reasons that have already been predetermined and created in inventory reason code maintenance in the Product Related Maintenance file.

RETURN AUTHORIZATION ENTRY

The return authorization entry and maintenance screen is where the user would initially enter all pertinent information that is associated with the return that is being created. The information entered here includes company number, the number of the warehouse that the merchandise will be returned to, the customer who is requesting the return, and the reason for the return. The system will generate and assign a number for this return authorization.

RETURN AUTHORIZATION APPROVAL

After the request for the return authorization has been entered, it must be approved before actually becoming a valid return. It is in this screen that the approval will take place. The system will prompt for the entry of the return authorization number that was assigned during the initial entry process above, and then the operator will have to approve each product listed on the return line by line.

RETURN AUTHORIZATION RECEIPT

The return authorization receipt screen will be utilized to record when the merchandise that has been returned actually arrives back at your site. At this time the user will be required to enter the return authorization number. At this point if everything that was supposed to be returned came back then the operator can enter 0 to accept the receipt or the quantity received can be changed to correspond with what actually was received.

RETURN AUTHORIZATION OVERVIEW

RETURN AUTHORIZATION STATUS CODE REPORT

The return authorization report will print a listing of all return authorizations created on the system and sort them by their status code (whether they are open or have been received).

OPEN R/A'S BY CUSTOMER BY SALES REP REPORT

The open return authorizations by customer by sales rep report will print a listing of customers with open return authorizations that have NOT been received as of the time the report was run.

OPEN R/A'S BY PRODUCT REPORT

The open return authorization by product report will produce a listing of products and the number of all the return authorization they appear on.

RETURN AUTHORIZATION PRINT MENU

The three functions of this print menu is to provide the MDS user with a way to print all return authorizations that have been created for a period of time, reprint a range of return authorizations, or reprint return authorizations by specific return authorization numbers.

INQUIRY

The inquiry menu also serves three functions. It gives the operator the ability to inquire on any open return authorizations that have been entered into the system, it gives the ability to inquire about returns for specific products (also used if the operator is unsure of the return authorization number but knows what products were on it), and also allows the operator to inquire about specific customers that have returns issued (this too serves well if the operator is unsure of the return authorization number but does know who the customer is).

RETURN AUTHORIZATION ENTRY

PROGRAM NAME	RA.BP RAE.DRIVER010
SELECTION	MENU-26
SELECTION NUMBER	1
FILES ACCESSED	CONTROL
	SHIP.TO.XREF
	REASON.CODE
	PASS
	PRICE.3
	CUST.MAST
	PROD.MAST
	CUST.DET
	PROD.DET

OVERVIEW

This file allows the MDS user to create and maintain return authorizations for returned merchandise they receive. Also giving the ability to enter the returned items back into inventory and into an available status.

OPERATING INSTRUCTIONS**COMPANY #**

Enter the company number from where the merchandise was purchased.

ENTER RETURN AUTHORIZATION NUMBER, 'NEW' OR 'END'

Enter the return authorization number or NEW to create a new entry.

RETURN WHSE #

Enter the warehouse number that the merchandise is being returned to.

CUST #

Enter the customer number or 'L' for the lookup capabilities.

RETURN AUTHORIZATION ENTRY**OPERATING INSTRUCTIONS****IS THIS THE CORRECT CUSTOMER (CR/N)**

If this is the correct customer then hit 'RETURN' and the ship-to address will display if not, enter a 'N' to enter another name.

CUST PO#

Enter the customer's PO. #

EXPIRATION DATE

Enter the expiration date if one applies.

REASON CODE

Enter the reason code for the return.

SLSM

The salesman for this customer will automatically display and can be overridden at this time.

COMMISSION %

The commission that the salesman receives will display and can be overridden at this time.

TERMS

The terms that you have setup for this customer will display and can also be overridden.

RETURN AUTHORIZATION ENTRY**OPERATING INSTRUCTIONS (Continued)****ENTER LINE # TO CHANGE, 0 TO ACCEPT, S TO CHANGE SHIP TO**

Enter the appropriate line number for a change, '0' to accept the input or S to manually change the ship to address.

IS THE RETURN AUTHORIZATION CORRECT TO THIS POINT (CR/N)

Enter 'N' to change the return authorization or hit 'RETURN' to proceed to the next prompt.

PRODUCT #

Enter the first product being returned. The product description will display upon entry of correct product number.

INV #

Enter the invoice number associated with the products on this return.

QTY

Enter the amount of the product that will be returned. The price for that product will display as well as the unit of measure and the reason code.

ENTER THE LINE # TO CHANGE, ADD TO ADD LINES OR 'END

Enter the appropriate line number of the needed change , 'ADD' to add additional products, or 'END' to accept information that was entered. You will now be brought to the total screen.

TAX JURS

The tax jurisdiction will display upon entering the total screen.

RETURN AUTHORIZATION ENTRY**OPERATING INSTRUCTIONS (Continued)****TAX**

The tax amount being charged will automatically display at this time.

FREIGHT

Enter any freight charges that are being credited.

MISC

Enter any miscellaneous credits at this time.

RESTOCK %

Enter any restock percentages if they apply.

**ENTER LINE # TO CHG, 'CL' TO CHG DETAIL LINES, CANCEL TO CANCEL,
0 TO ACCEPT.**

Enter the appropriate line number for a change, 'CHG' to change any line items, CANCEL to cancel the return or '0' to accept information that was entered.

RETURN AUTHORIZATION ENTRY

Acct:BASE.10 Port: 27 Process:RA 25 JUN 97

File Edit Settings File Transfer

RETURN AUTHORIZATION ENTRY AND MAINTENANCE 06/25/97

OPERATOR: █--
COMPANY #:
RETURN TO WHSE:
CUST#: SHIP TO:
1.
2.
3.
4.
5.
1. CUSTOMER PO #:
2. EXPIRATION DATE:
3. REASON CODE
4. SLSM
5. COMM %
6. TERMS
RTN/NONRTN

*** R/A NUMBER ***
*** STATUS ***

RA.HDR.INPUT010

OR	VE	MAINT	EMAIL	AUDIT		CAPT DN	VIEW	Br
HELP	END	INSERT	LDELETE	PREV PG	NEXT PG	INQUIRY	ABORT	k

RETURN AUTHORIZATION APPROVAL

PROGRAM NAME	RA.BP RAA.DRIVER010
SELECTION	MENU-26
SELECTION NUMBER	2
FILES ACCESSED	PASS CONTROL CUST.MAST CUST.DET PRODUCT.MAST

OVERVIEW

This file allows the operator to approve the return authorizations that were created during the entry process.

OPERATING INSTRUCTIONS

ENTER RETURN AUTHORIZATION NUMBER OR 'END'

Enter the return authorization number to want to approve or 'END' to return to the selector.

ENTER LINE # TO CHANGE, A TO APPROVE, ADD TO ADD LINES, 0 TO ACCEPT, OR CANCEL TO CANCEL

Enter appropriate line number for a change, A to approve the return, ADD to add any line items that may have been forgotten during the entry process, '0' to accept without giving approval, or CANCEL to cancel the return.

If a line number is entered for a change then the system will prompt :

DO YOU WANT TO DELETE THIS LINE (Y/N/SEE)

Enter "Y" to delete the line, "N" to be brought up to the line you need to make a change to or 'SEE' to just view the screen.

RETURN AUTHORIZATION APPROVAL

OPERATING INSTRUCTIONS

If A for approval is chosen then the system prompts :

INPUT APPROVAL PASSWORD

Enter your password.

RETURN AUTHORIZATION APPROVAL

Acct:BASE.10 Port: 27 Process:RA 25 JUN 97

File Edit Settings File Transfer

RETURN AUTHORIZATION APPROVAL

CO	WHSE	CUST			R/A
CUST PO#	WHS	DATE ENT	SOLD TO		SHIP TO
CONTACT					

LN#	---PRODUCT---	QTY	RECD	CD	PRICE	UM	COST	UM	RSI
	UM DESCRIPTION		CON: INU#-LN#		SERIAL #				TR

ENTER RETURN AUTHORIZATION NUMBER OR 'END' : #####

RAA.HDR.INPUT010

OR	VE	MAINT	EMAIL	AUDIT		CAPT ON	VIEW	Br
HELP	END	INSERT	LDELETE	PREV PG	NEXT PG	INQUIRY	ABORT	k

RETURN AUTHORIZATION RECEIPT

PROGRAM NAME	RA.BP RAR.DRIVER010
SELECTION	MENU-26
SELECTION NUMBER	3
FILES	CONTROL
	COMPANY
	CUST.MAST
	CUST.DET

OVERVIEW

This file allows an operator to log the return when it arrives. It serves as a tool for tracking an item that has been returned and is used in the billing process.

OPERATING INSTRUCTIONS**ENTER RETURN AUTHORIZATION NUMBER TO END**

Enter the return authorization number of the merchandise that was received.

RETURN TO WHSE #

Enter the number of the warehouse that the inventory will be returned to.

LINE # TO CHANGE, 0 TO ACCEPT, S TO CHANGE SHIP TO OR E TO END

Enter appropriate line number of the needed change, '0' to accept information that displayed, S to manually change the ship-to address, or E to return to the selector.

LINE # TO CHANGE, 0 TO ACCEPT, OR E TO END

Enter the line number to enter the amount received for that product. When all lines are completed then hit '0' to accept. At this time the system will prompt the operator for the next return authorization number to be received.

RETURN AUTHORIZATION RECEIPT

AcctBASE.10
Port: 27 Process:RA 25 JUN 97
_ □ ×

File Edit Settings File Transfer
RETURN AUTHORIZATION RECEIPTS 06/25/97

OPERATOR: █--		*** R/A NUMBER ***
COMPANY #:		*** STATUS ***
RETURN TO WHSE:	SHIP TO:	
CUST#:	1.	
	2.	
	3.	
	4.	
	5.	
1. CUSTOMER PO #:		
2. EXPIRATION DATE:		
3. REASON CODE		
4. SLSM		
5. COMM %		
6. TERMS		
RIN/NONRIN		

RAR.HDR.INPUT010

OR	VE	MAINT	EMAIL	AUDIT		CAPT DN	VIEW	Br
HELP	END	INSERT	DELETE	PREV PG	NEXT PG	INQUIRY	ABORT	k

RETURN AUTHORIZATION REPORT BY STATUS CODE

PROK NAME	PROK PRA.OPEN.RPT
PROGRAM NAME	RA.BP RA.OPEN.RPT010
SELECTION	MENU-26
SELECTION NUMBER	4
FILES ACCESSED	PRA.OPEN.RPT
	CUST.MAST
	RA
	RELEASE
	PARAMETER

OVERVIEW

This report will give a listing of all return authorizations on the system that have been entered. It is sorted by the status code.

OPERATING INSTRUCTIONS**RETURN AUTHORIZATION REPORT
HIT <CR> TO CONTINUE OR 'END'**

Hit 'RETURN' to continue or 'END' to return to the selector.

- 1. UNAPPROVED R/A'S**
- 2. OPEN R/A'S**
- 3. ALL R/A'S**

Enter the number for the type of listing you want.

ENTER STARTING SLSMN NUMBER

Enter the starting salesman number to begin selection.

ENTER THE ENDING SLSMN NUMBER

Enter the ending salesman number to end selection.

RETURN AUTHORIZATION REPORT BY STATUS CODE

OPERATING INSTRUCTIONS (Continued)

ENTER STARTING REASON CODE

Enter the starting reason code.

ENTER THE ENDING REASON CODE

Enter the ending reason code.

RETURN AUTHORIZATION BY STATUS CODE REPORT

10/09/97 10:55:13

*****RETURN AUTHORIZATION REPORT*****
R/A STATUS = UNAPPROVED

PAGE 1

LN#	PRODUCT NUMBER	PRODUCT DESC.	DATE	RCVD QTY	REC	SERIAL#	PRICE	UM COST	RSN	EXT PRICE	
CUST:ACME		ACME SUPPLY HOUSE R/A: 01110884 CUSTOMER PO# PO 6655					WHSE: 001				
001	NFSU-E45	13" STEEL ROD	6/20	4	0	125PL	13.60DZ	93.60	001	54.40	
****TOTALS FOR R/A NUMBER 01110884								374.40		54.40	
CUST: IDEAL		IDEAL DIST. CO R/A: 01121248 CUSTOMER PO# PO 128P					WHSE: 001				
002	23L-89P	8X10 PEWTER FRAME	7/25	2	1	565692	14.50EA	4.50	002	29.00	
****TOTALS FOR R/A NUMBER 01121248								9.00		29.00	

RETURN AUTHORIZATION BY STATUS CODE REPORT

10/09/97

10:55:13

*****RETURN AUTHORIZATION REPORT*****
R/A STATUS = ALL

PAGE 1

LN#	PRODUCT#	PRODUCT DESC.	DATE	RCVD	QTY	REC	SERIAL#	PRICE	UM	COST	RSN	EXT PRICE
CUST:ACME		ACME SUPPLY HOUSE	R/A: 01110884	CUSTOMER PO# PO 6655						WHSE: 001		
001	NFSU-E45	13" STEEL ROD	6/20	4	0		125PL	13.60	DZ	7.50	001	54.40
002	12OP-8II	XL LATEX GLOVE	6/25	1	1			18.35	CS	8.50	001	18.35
****TOTALS FOR R/A NUMBER 01110884											72.75	

RETURN AUTHORIZATION BY STATUS CODE REPORT

10/09/97 10:55:15 *****RETURN AUTHORIZATION REPORT***** PAGE: 1
R/A STATUS = OPEN

LN#	PRODUCT#	PRODUCT DESC.	DATE	RECD	QTY	REC	SERIAL#	PRICE	UM	COST	RSN	EXT PRICE
CUST: AJAX		AJAX, INC.	R/A: 01457810	CUSTOMER PO#:		PO 90878	WHSE:		002			
001	101SA	RED DESK	09/14	1	1	25987LL	200.00EA	100.00EA	001	200.00		
***TOTALS FOR R/A NUMBER 01457810											200.00	
CUST: GTV		GOOD TIMES, INC	R/A: 01236523	CUSTOMER PO#:		452	WHSE:		002			
004	S105S	DIRECTOR CHAIR	10/01	2	0	56452AD	150.00EA	75.00EA	002	300.00		
***TOTALS FOR R/A NUMBER 01236523											300.00	

OPEN R/A'S BY CUST BY SALES REP REPORT

PROK NAME	PROK PRA.CUST.RPT
PROGRAM NAME	RA.BP RA.CUST.RPT010
SELECTION	MENU-26
SELECTION NUMBER	5
FILES ACCESSED	RA
	CUST.MAST
	RELEASE
	SALESMAN
	PARAMETER

OVERVIEW

This report gives a listing of all open return authorizations that have not been received as of the time the report is run. It is sorted by the customers who have return authorizations.

OPERATING INSTRUCTIONS**OPEN RETURN AUTHORIZATION BY CUSTOMER REPORT****HIT <CR> TO CONTINUE OR 'END'**

Hit 'RETURN' to continue with report or 'END' to return to the selector.

RETURN AUTHORIZATION OPEN R/A BY CUSTOMER

10/10/97 10:39:40 ****OPEN R/A'S BY CUSTOMER**** PAGE: 1

SALES REP: 002 EUGENE FORREST

LN#	PRODUCT NUMBER	PRODUCT DESC.	DATE	RECVD QTY	REC	SERIAL#	PRICE	UM COST	RSN	EXT PRICE
-----	----------------	---------------	------	-----------	-----	---------	-------	---------	-----	-----------

CUST: UMC	UNIVERSITY MED CTR	R/A: 01122456				CUSTOMER PO#: PO 6661		WHSE: 001		
001 NFSU-908	4X6 POST IT PAD	10/15	5	0		5.75EA	2.00EA	002		28.75

****TOTALS FOR R/A NUMBER 01122456 28.75

CUST: AJAX	AJAX SUPPLY HOUSE	R/A: 01789456				CUSTOMER PO#: PO 89MM		WHSE: 001		
002 45-562	8X10 PEWTER FRAME	10/01	6	6		18.50EA	8.50EA	001		111.00

****TOTALS FOR R/A NUMBER 01789456 111.00

OPEN R/A'S BY PRODUCT REPORT

PROK NAME	PROK PRA.PROD.RPT
PROGRAM NAME	RA.BP RA.PROD.RPT010
SELECTION	MENU-26
SELECTION NUMBER	6
FILES ACCESSED	RA
	RA.ITEM.XREF
	PROD.MAST
	RELEASE
	PARAMETER

OVERVIEW

This is a listing of all open return authorizations by product. The return authorizations that are listed on this report have not been through the receipt process yet.

OPERATING INSTRUCTIONS**OPEN RETURN AUTHORIZATION BY PRODUCT REPORT****HIT <CR> TO CONTINUE OR 'END'**

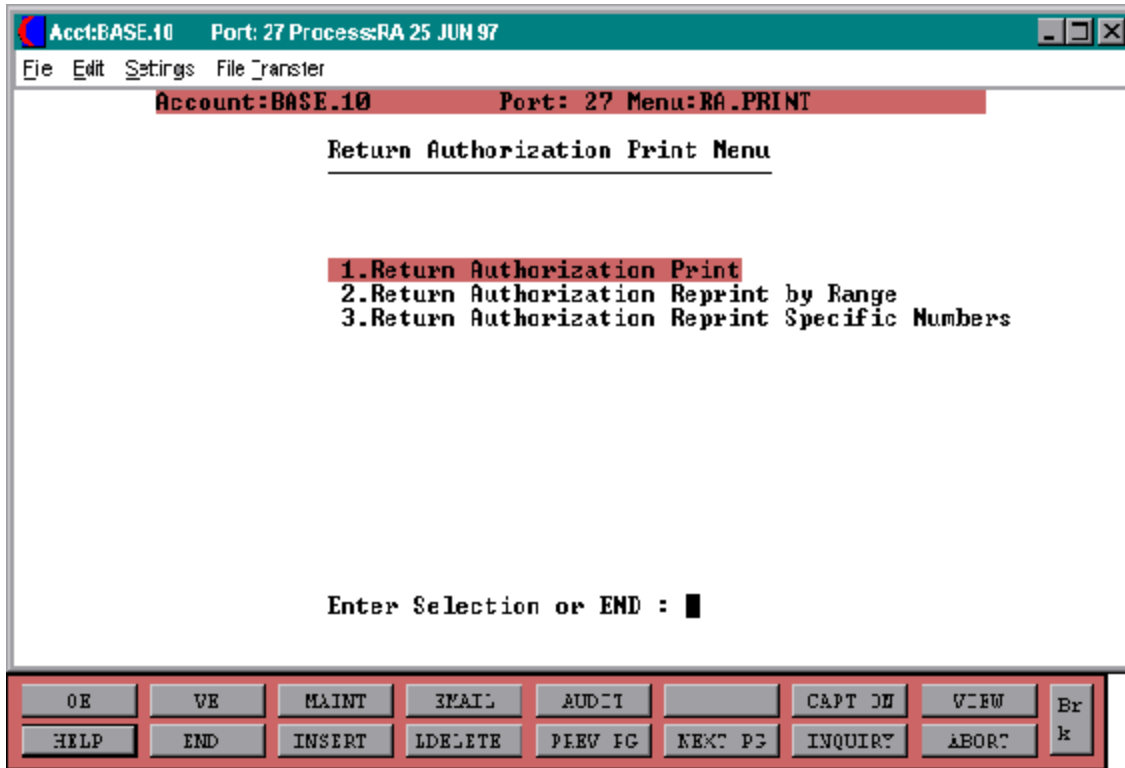
Hit 'RETURN' to proceed with the report or END to return to the selector.

OPEN R/A'S BY PRODUCT REPORT

10/10/97 10:15:32 ****OPEN R/A'S BY PRODUCT**** PAGE: 1

PRODUCT NUMBER	CUST NUMBER	R/A#	LN#	DATE	RCVD QTY	REC	SERIAL#	PRICE	COST	RSN	WHSE
101	IDEAL	01122365	002	07/31	1	0	4512MK	200.00	100.00	001	001
101	AJAX	01452369	004	06/20	1	0	4578OI	200.00	100.00	002	001
101	ACME	01236521	001	06/15	2	2	JKL098	400.00	200.00	002	001
****TOTALS FOR PRODUCT NUMBER 101							RED PLASTIC DESK	800.00	400.00		
STUSSY	UMC	01111458	002	07/13	1	1	4HJ211	150.00	75.00	003	002
STUSSY	HJD1	01452123	002	06/15	1	1	6M231	150.00	75.00	001	002
****TOTALS FOR PRODUCT NUMBER STUSSY							STUSSY DIRECTOR CHAIR				

RETURN AUTHORIZATION PRINT MENU



RETURN AUTHORIZATION PRINT

PROK NAME	PROK PRA.PRT
PROGRAM NAME	RA.BP RA.PRT010
SELECTION	MENU-26,7
SELECTION NUMBER	1
FILES ACCESSED	RA
	CUST.MAST
	SALESMAN
	SHIP.METHOD
	PROD.MAST
	RA.PRT.XREF
	CUST.DET
	WAREHOUSE
	TERMS
	COMPANY
	PARAMETER

OVERVIEW

This file allows the operator to print all return authorizations open and closed that are on the system. This will automatically print all return authorizations on file that have not been printed yet.

OPERATING INSTRUCTIONS**RETURN AUTHORIZATION PRINT PROGRAM****HIT <NL> TO CONTINUE OR 'END'**

Hit 'RETURN' to proceed with the print out or 'END' to return to the selector.

RETURN AUTHORIZATION REPRINT BY RANGE

PROK NAME	PROK PRA.REPRINT
PROGRAM NAME	RA.BP RA.PRT010
SELECTION	MENU-26,7
SELECTION NUMBER	2
FILES ACCESSED	RA
	CUST.MAST
	SALESMAN
	SHIP.METHOD
	PROD.MAST
	RA.PRT.XREF
	CUST.DET
	WAREHOUSE
	TERMS
	COMPANY
	PARAMETER

OVERVIEW

This file allows an operator to reprint a range of return authorizations rather than printing the whole file. At times there might be quite an extensive listing, this option is ideal if there are only a few within a range that need to be reprinted.

OPERATING INSTRUCTIONS**RETURN AUTHORIZATION REPRINT PRINT PROGRAM****MOUNT FORMS AND HIT <NL> OR 'END'**

At this time your forms should be mounted. Hit 'RETURN' to print or 'END' to return to the selector.

ENTER BEGINNING RA NUMBER

Enter the RA number you want to begin the reprint with.

ENTER ENDING RA NUMBER

Enter the last RA number you want to reprint.

RETURN AUTHORIZATION REPRINT SPECIFIC NUMBERS

PROK NAME	PROK PRA.REPRINT.LIST
PROGRAM NAME	RA.BP RA.PRT010
SELECTION	MENU-26,7
SELECTION NUMBER	3
FILES ACCESSED	RA
	CUST.MAST
	SALESMAN
	SHIP.METHOD
	PROD.MAST
	RA.PRT.XREF
	CUST.DET
	WAREHOUSE
	TERMS
	COMPANY
	PARAMETER

OVERVIEW

This feature allows an operator to print only specific return authorizations. Remember this feature brings you to the editor mode. Printing in this fashion is a little different from the previous methods.

OPERATING INSTRUCTIONS

R/A REPRINT PRINT PROGRAM

MOUNT FORMS AND HIT <NL> OR 'END'

At this time forms should be mounted in the printer. Hit 'RETURN' to proceed with the print out or 'END' to return to the selector.

REMEMBER YOU ARE IN EDIT MODE , ENTER I TO INSERT

To print the specific return authorizations the system brings you to edit mode. Enter an I to insert specific numbers. Enter the return authorization number and hit 'RETURN' for the next line number prompt. If you have several numbers continue this until all numbers are entered. When finished hit 'RETURN' twice, you will then be brought to a semi colon at the bottom of the list of numbers you just entered. Enter an FI (file) and hit 'RETURN'. You then will be prompted to check your SP-ALIGN function to start print out.

OPEN RETURN AUTHORIZATION INQUIRY

PROGRAM NAME	RA.INQ.DRIVER010
SELECTION	MENU-26,8
SELECTION NUMBER	60
FILES ACCESSED	RA RELATED FILES

OVERVIEW

This inquiry allows the MDS operator to view all products entered on a specified return authorization number.

OPERATING INSTRUCTIONS

RA #

Enter the return authorization number you want to inquire on. At this point all open return authorizations will display. Hit 'ENTER' to view the listing further, if there aren't any left then the system prompts:

NO MORE OPEN ORDERS, ENTER 'B' FOR PAGE BACK, LINE # TO REDISPLAY OR 'RTN'

At this point the operator can review the previous page by entering a 'B' , or enter the appropriate line to redisplay, or hit 'RETURN' to enter another number.

OPEN RETURN AUTHORIZATION INQUIRY

Acct:BASE.10 Port: 27 Process:RA 25 JUN 97

File Edit Settings File Transfer

DETAILED RETURN AUTHORIZATION INQUIRY

RA #	REL	R/A DT	SOLD TO	SHIP TO					
#####									
WHSE		RECU'D							
CUST REF	STATUS								
LNS	REP	SPEC	INSTR						
LN#	---PRODUCT---	QTY	RECD	CD	PRICE	UM	COST	UM	RSI
UM	DESCRIPTION			INVOICE#	SERIAL #			TX	FLPL
<div style="text-align: right; padding-top: 10px; font-weight: bold; font-size: small;"> RA . DET . 00270 </div>									

OR	VE	MAINT	EMAIL	AUDIT		CAPT ON	VIEW	Br
HELP	END	INSERT	LDELETE	PREV PG	NEXT PG	INQUIRY	ABORT	k

RETURN AUTHORIZATION INQUIRY BY CUSTOMER

PROGRAM NAME	RA.INQ.DRIVER010
SELECTION	MENU-26,8
SELECTION NUMBER	61
FILES ACCESSED	RA RELATED FILES

OVERVIEW

This inquiry will list all products and their return authorization numbers sorted by customer.

OPERATING INSTRUCTIONS**CUST #**

Enter the customer that you want to begin the inquiry on. If unsure of customer code, there are lookup capabilities by entering an 'L' at the customer number prompt. This will give you a listing of all customers that have similar names.

After the customer is selected the system will prompt:

IS THIS THE CORRECT CUSTOMER (CR/N)

If this is the correct customer hit 'RETURN' to proceed. If it isn't the correct customer you can change it at this time.

ENTER CO # (2N), 'RTN' FOR ALL OR 'END'

Enter the company number, 'RETURN' for all companies, or 'END' to return to the selector.

NO MORE OPEN ORDERS. ENTER 'B' FOR PAGE BACK, LINE # FOR REDISPLAY, OR 'RTN'

Enter a 'B' at this time to review previous pages, enter the appropriate line number to redisplay or the operator can hit 'RETURN' to go back to the selector.

RETURN AUTHORIZATION INQUIRY BY CUSTOMER

Acct:BASE.10 Port: 27 Process:RA 25 JUN 97

File Edit Settings File Transfer

RETURN AUTHORIZATION INQUIRY BY CUSTOMER

CUSTOMER #:

REP REP NAME

LN#	ST	R/A NO	DATE	RECU'D	CUST REF	#LNS	\$ OPEN
-----	----	--------	------	--------	----------	------	---------

ENTER CUSTOMER #, 'L' FOR LOOKUP, OR 'END':

RA.CUST.00270

OR	VE	MAINT	3MAIL	AUDIT		CAPT DN	VIEW	Br
HELP	END	INSERT	LDELETE	PREV PG	NEXT PG	INQUIRY	ABORT	k

RETURN AUTHORIZATION INQUIRY BY PRODUCT

PROGRAM NAME	RA.INQ.DRIVER010
SELECTION	MENU-26,8
SELECTION NUMBER	62
FILES ACCESSED	RA RELATED FILES

OVERVIEW

This inquiry is by product and will give a listing of all return authorizations entered on the system for this product.

OPERATING INSTRUCTIONS**PRODUCT #**

Enter the product that you want to begin the inquiry on. If unsure of product code, there are lookup capabilities by entering an 'L' at the product number prompt. This will give you a listing of all products that have similar names.

After the product is chosen the system will prompt:

NO MORE OPEN ORDERS. ENTER 'B' FOR PAGE BACK, LINE # FOR REDISPLAY, OR 'RTN'

Enter a 'B' at this time to review previous pages, enter the appropriate line to redisplay or the operator can hit 'RETURN' to go back to the selector.

RETURN AUTHORIZATION BY PRODUCT INQUIRY SCREEN

Acct:BASE.10 Port: 27 Process:RA 25 JUN 97

File Edit Settings File Transfer

RETURN AUTHORIZATION INQUIRY BY PRODUCT

ITEM NO.	ITEM DESCRIPTION	SELL UM	STK UM
----------	------------------	---------	--------

LN#	ST	R/A NO	CUST NAME	DATE	REC'D	CUST REF	WHS	QTY.R.
-----	----	--------	-----------	------	-------	----------	-----	--------

ENTER PRODUCT #, 'L' FOR LOOKUP, OR 'END':

RA.ITEM.00270

OR VE MAINT EMAIL AUDIT CAPT ON VIEW Br

HELP END INSERT LDELETE PREV PG NEXT PG INQUIRY ABORT k

THE SYSTEMS HOUSE, INC.
MASTER DISTRIBUTION SYSTEMS DOCUMENTATION

I N D E X

Approvals	2,9,10
Billing	12
Inquiry	3,27,29,31
Inventory	4
Inventory Reason Code	2
Invoice Number	6
Lookup Capabilities	29, 31
Open R/A's	14
Printing Return Authorizations	3,23,24,25,26
Receive Merchandise	2
Return Authorization Entry	4
Return Authorization Menu	1
Return Authorization Receipts	12
Return Authorization Reports	3,14
Status Code	3, 14,19,21
Tracking	12
Unapproved R/A'S	14