

Wireless Management System



Wireless Warehouse Management

Inventory and warehouse expense represent the 2 largest investments in a distribution environment. An efficiently managed warehouse will provide the greatest financial return on investment, in addition to achieving greater levels of productivity and cost savings. The MDS Warehouse Management System (MDS-WMS) is a powerful solution for automating the inventory handling process in your warehouse. Utilizing state-of the art technology and proven product management techniques, it provides a comprehensive and cost-effective warehouse management solution.

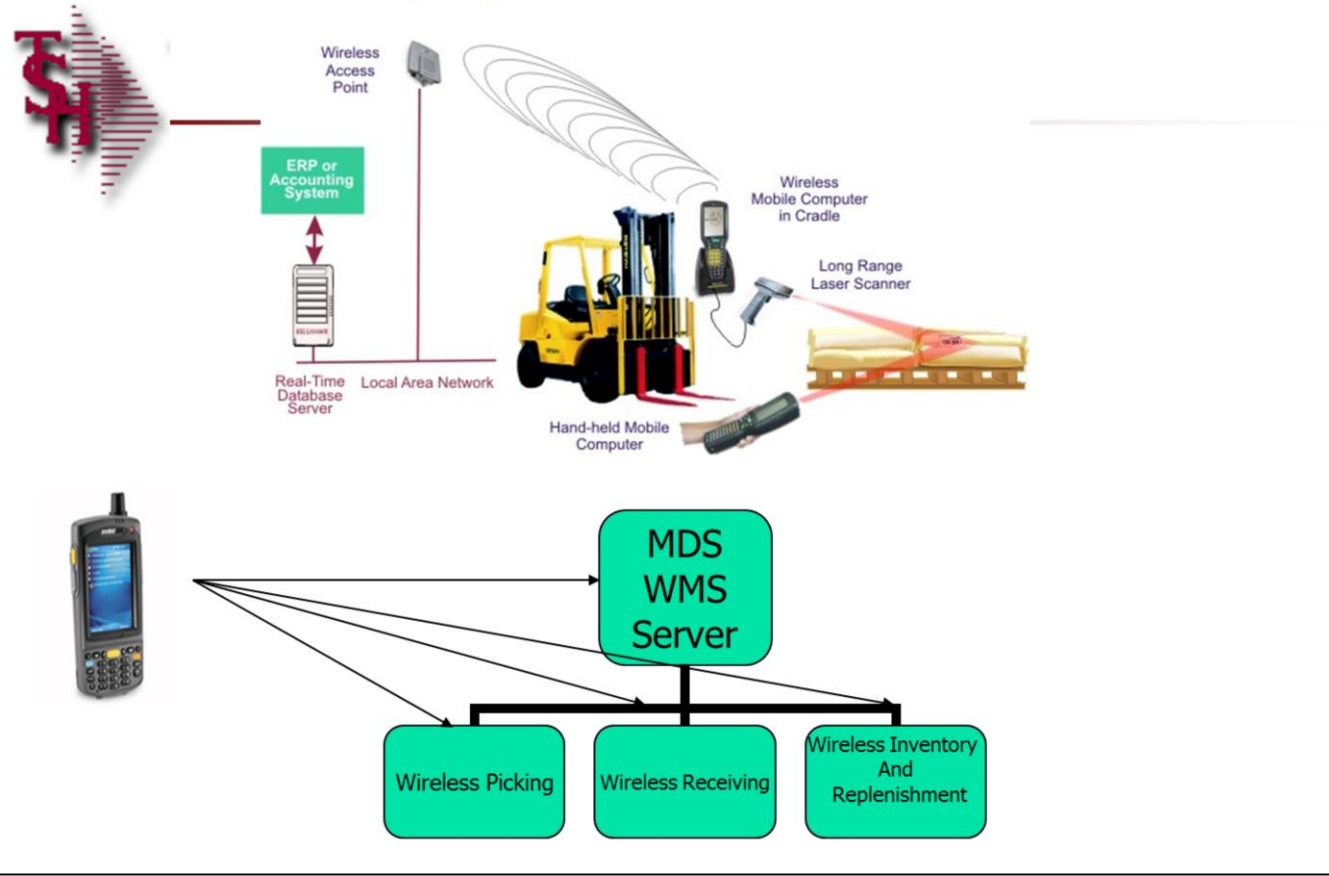
MDS-WMS works as part of a complete software solution by integrating wireless and bar-coding technologies, shipping systems, and other warehouse automation equipment such as Carousels, PTL (Pick To Light), Voice directed picking, and Sortation systems.

MDS-WMS also directly integrates with MDS Order Entry, Inventory Control, and Purchase Order modules, or your existing MMIS information systems.

This training guide will discuss the setup and use of the wireless system.

Notes:

WiFi Equipment Schematic



Notes:

Dashboard - [rs6000d.tshinc.com-27 BASE.12-WAREHOUSE-MAINT00851]

File Edit Settings Reset Tools GUI PDA Standard Functions Special Functions Help

WAREHOUSE MAINTENANCE

MDS Warehouse Maintenance

Warehouse Number: 001

1. Warehouse Name: WAREHOUSE

2. Warehouse Addr 1: 1033 ROUTE 46

3. Warehouse Addr 2:

4. Warehouse Addr 3:

5. City: CLIFTON

6. State: NJ

7. Zip: 07731

8. Owning Company: 01 The Systems House, Inc.

9. Phone Number: 845-555-7777

10. Tax Jurisdiction: 1 NEW JERSEY

11. Transfer Cust#: 001 WHSE 1

24. Trans Shipping Warehouses

1.	005	MIAMI
2.	002	CHICAGO
3.	003	LOS ANGELES
4.	007	PRODUCTION

Warehouse Management Parameters

12. Location Control	L	19. Remove Location Flg	N
13. Wireless Picking	N	20. Replen Case Rounding	
14. Bulk Redirection	Y	21. Redirect if not in Bulk	
15. Receiving Method	B	22. OE Replen to Max	
16. IM Replen Method	1	23. Wireless Receipts	Y
17. Single Product	N		
18. Prim Replen Method			

ENTER LINE # TO CHANGE,DELETE TO DELETE,0 TO ACCEPT : XXXXXX PAGE 1 OF 2

HELP	OK/END	INSERT	LDELETE	PREV PG	NEXT PG	INQUIRY	CANCEL	OFF	Userfile
									Popup

Warehouse Maintenance

MDS-WMS supports multiple warehouses, locations, and bins within the warehouse.

Location Control – Enter “L” to control inventory by location, otherwise enter “N”.

Wireless Picking - Is wireless picking in use for this warehouse? (Y/N). If set to “Y” requires that pick tickets be flagged by the wireless picking module before being verified/invoiced.

Wireless Receipts – Is wireless receipts in use for this warehouse? (Y/N). If set to “Y” then PO put away locations will be used.

Notes:

Dashboard - [rs6000d.tshinc.com-33 BASE.12-SHIP.TO.MAINT00851]

File Edit Settings Reset Tools GUI PDA Standard Functions Special Functions Help

Ship To Maintenance

Customer # RACHEL RACHEL CUST

Ship To # 000888

1.Ship To Name TEST ADD 19.Pick Priority 77

2.Ship To Addr1 ADDRESS LINE 1 20.DEA#

3.Ship To Addr2 ADDRESS LINE 2 21.DEA Expires

4.Ship To Addr3 ADDRESS LINE 3 22.License#

5.City HOWELL 23.Drug Type 1

6.State NJ Country 000 U.S.A. 2

7.Zip Code 07731 8.DEA Code 3

9.Ship Method 01 UPS 24.Phone#

10.Ship Zone 25.Res/Com C

11.Special Instr

12.Tax Juris. 1 NEW JERSEY 26.Pack Slip Template

13.Tax Exempt #

14.Service Whse

15.Admin Fee % 0.00 27.Facility

16.Primary Route Stop 28.Inactive Flag

17.Secondary Route Stop 29.Wireless Picking Y

18.Attention 30.Item Labels Y

ENTER LINE # TO CHANGE,DELETE TO DELETE,0 TO ACCEPT : XXXXXX PAGE 1 OF 2

HELP	OK/END	INSERT	LDELETE	PREV PG	NEXT PG	INQUIRY	CANCEL	Off	Userfile
									Popup

Ship To Maintenance

The customer's ship to code is flagged to use the Wireless Picking field and/or the Item Labels field.

Wireless Picking - If set to "Y" then no pick tickets will be generated for the customer and ship to when the Batch Pick Ticket print is run. Items will be included in the Wireless Batch Pick report instead.

Item Labels - If set to "Y", the picking screens will show an asterisk (*) to indicate item labels are required.



Notes:

Dashboard - [rs6000d.tshinc.com-33 BASE.12-LOCATION-MAINT01051]

File Edit Settings Reset Tools GUI PDA Standard Functions Special Functions Help

LOCATION MASTER FILE

Warehouse 001 WAREHOUSE

Location A-874

1.Physical Location CENTER AISLE

2.Environment Code 01 STD WAREHOUSE

3.Type P

4.Size

5.Limit 0

6.Levels 0

7.Bulk Pick P

8.Multiple Products

9.Std Packaging EA

10.Products

11.Length 200

12.Width 50

13.Height 20

Total Volume (Cubic Feet) 115.741

Note: Environment and Type cannot be changed if this Location is not empty.

	OnHand	OnHand Volume	% Capacity
		0.000	0.00
		0.000	0.00
		0.000	0.00
		0.000	0.00
		0.000	0.00
Totals	0	0.000	0.00

ENTER LINE # TO CHANGE,DELETE TO DELETE,0 TO ACCEPT : XXXXXX

HELP	OK/END	INSERT	LDELETE	PREV PG	NEXT PG	INQUIRY	CANCEL	Off			Popup
------	--------	--------	---------	---------	---------	---------	--------	-----	--	--	-------

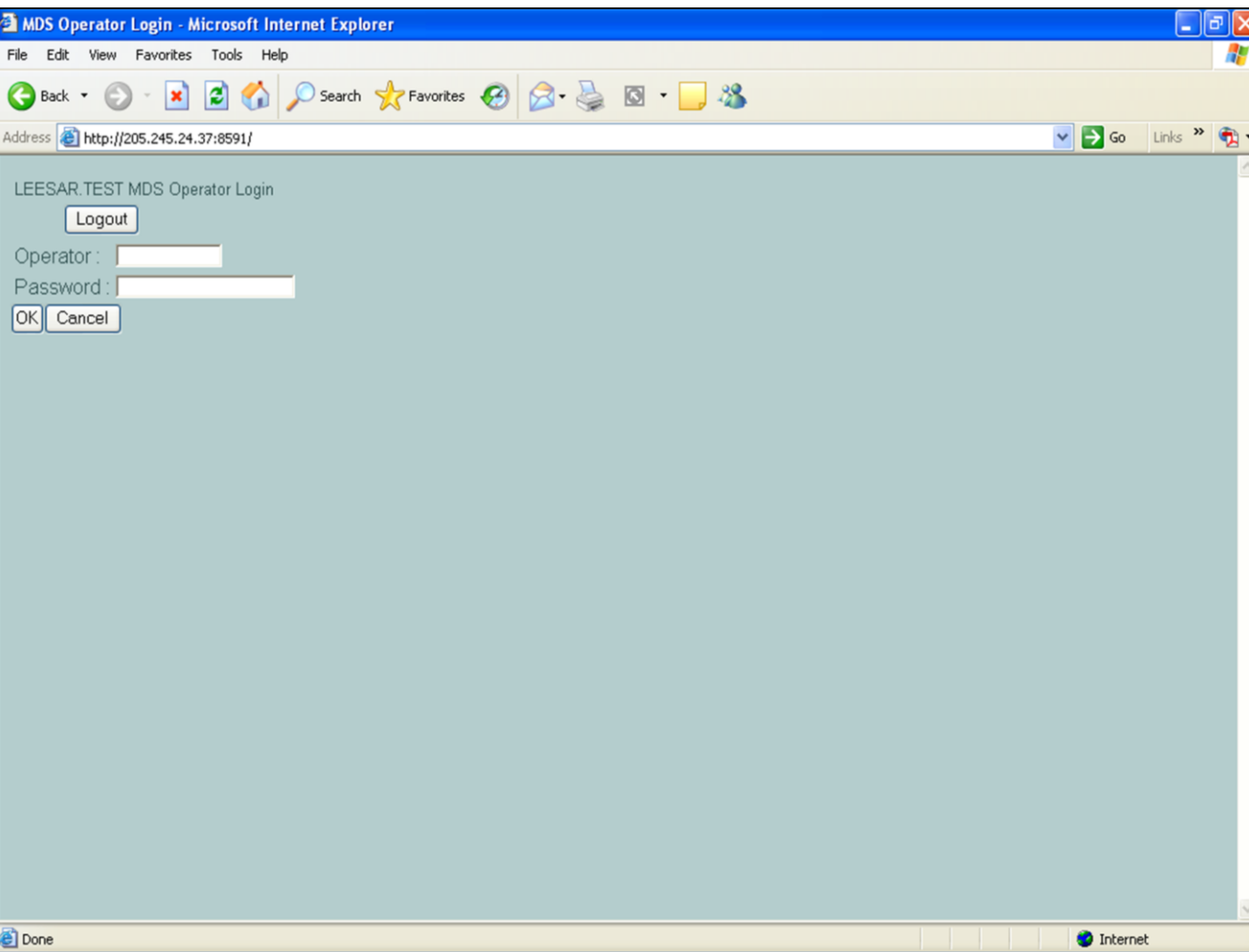
Location Maintenance

Bulk Pick – Enter the picking flow for this location:

- B Bulk Pick
- C Carousel
- F Flow Rack
- P Piece Pick

The Picking Flow is used then assigning releases for wireless and/or automated picking equipment.

Notes:



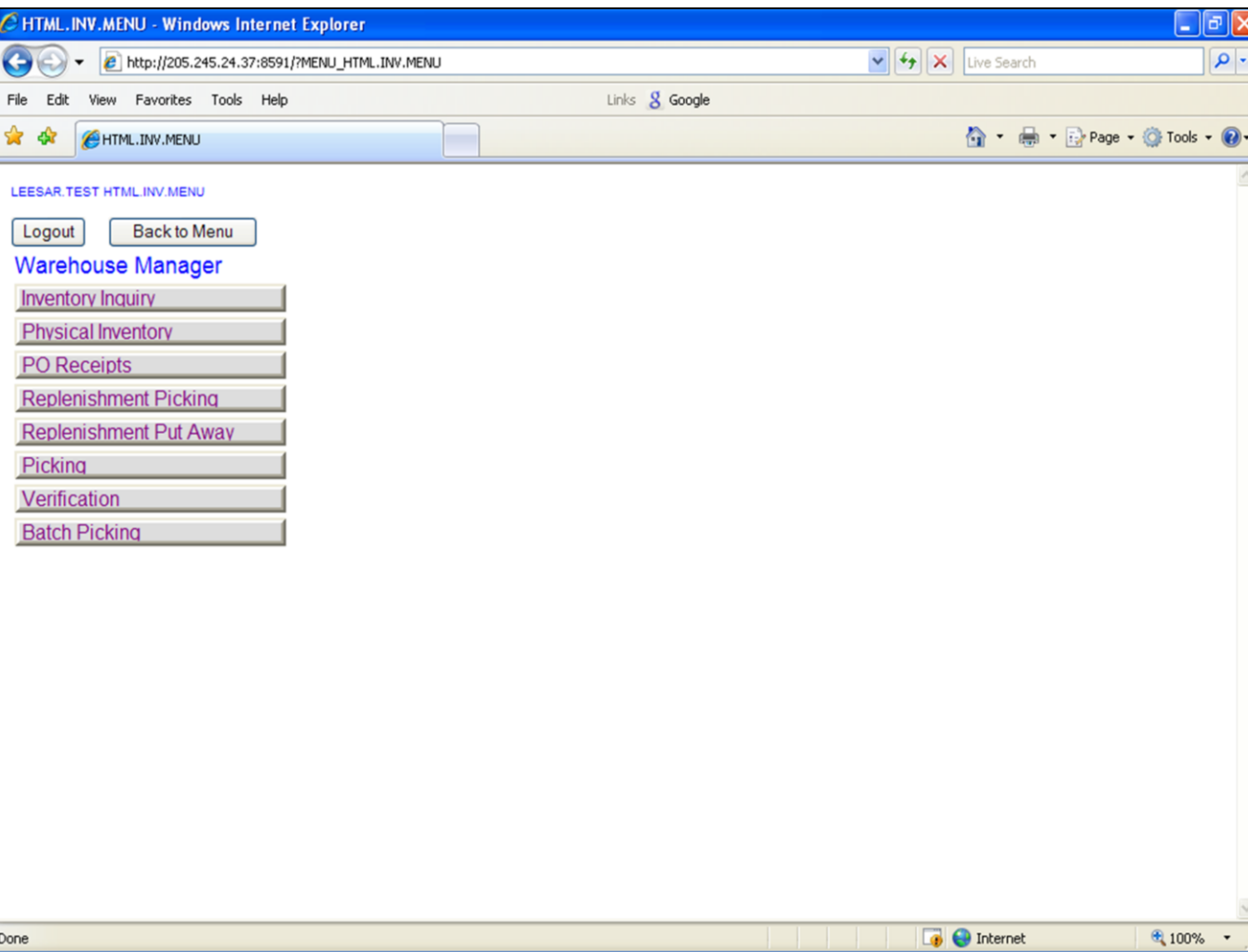
Operator Login

The operator login screen is required to authenticate the user's permissions through the system.

Operator : Enter the operator code, once you're done, touch the screen in the "**Password**" field.

Password : Enter the password and selected "OK" to complete the login process.

Notes:



Warehouse Manager Menu

The Warehouse Manager menu will be displayed if your login attempt was successful.

Logout – Click on the Logout link to logout of the system.

Notes:

LEESAR.TEST Inventory Inquiry

Scan

Product#

Description

Vendor

Stk: EA Box: 10 Case: 50

Location	On Hand	In Pick	Whse
CS	BX	EA	Last Rcpt:
Total 001	10	0	001
CS:0	BX:1	EA:0	06/04/08
RA01-01-1	10	0	001
CS:0	BX:1	EA:0	MM/DD/YY

[Box Image](#) [Case Image](#)

Inventory Inquiry

The Inventory Inquiry provides in-depth stock information for a specific product.

Scan – Click on the “Scan” box. Scan the bar code of the item or type in the item number. The system will then display the stock information for the item.

Product # - The item number is displayed.

Description – The 1st line of description for the item.

Vendor – The vendor number.

Stk – Stocking unit of measure.

Box – The box quantity.

Case – The case quantity.

The stock quantities are listed 2 separate ways. The first is the total warehouse, and second is the location the item is in. If the item was in multiple locations, that information would also be displayed.

Location – The location the item is currently stored.

On Hand – The current on hand quantity.

In Pick – The current amount currently in pick on orders.

CS, BX, EA – Each of these fields displays the quantity of what is in stock.

Whse – The warehouse the location is in.

Last Rcpt – The date of the last purchase order receipt.

Notes:

Box Image – To display the box image, just click on the link.

Case Image - To display the box image, just click on the link.

Notes:

LEESAR TEST Physical Inventory Tag Entry

Back to Menu Logout

Scan Tag# Whse

Item#

Desc Lot#

Location Count Stk UM

	U/M		QTY	COUNT	QTY	STK	QTY	
1.	CS	<input type="text"/>	1	<input type="text"/>	<input type="text"/>	<input type="text"/>	<input type="text"/>	Delete Line
2.	BX	<input type="text"/>	1	<input type="text"/>	<input type="text"/>	<input type="text"/>	<input type="text"/>	Delete Line

OK Cancel Delete

Physical Inventory

An operator performing a physical inventory would be given count sheets. On the count sheet there is a bar coded list of all the locations in the operator will be counting.

Scan – Click on the “Scan” box. Scan the first bar code on the count sheet and press the trigger on the scanner’s handle to scan the first tag number. The system will then display the item information for the first product to be counted.

Item# - The item number is displayed.

Desc – The item description.

Lot# - If using lots, the lot number would be displayed.

Location – The location of the item.

Stk UM – The stocking unit of measure.

Count the product in the designated location.

Count Qty – Enter the counts into the appropriate fields. Take note to enter the counts into the box for the corresponding unit of measure.

Delete Line – The delete line button is only used if the user is not entering a count for the corresponding unit of measure.

When complete, click “OK”.

Notes:

LEESAR.TEST Physical Inventory Tag Entry

Back to Menu Logout

Scan Tag# Whse

Item# [Inquiry](#)

Desc Lot#

Location Count Stk UM

	U/M	QTY	COUNT	QTY	STK	QTY	
1.	CS	<input type="text" value="50"/>	<input type="text" value="1"/>	<input type="text" value="50"/>			Delete Line
2.	BX	<input type="text" value="10"/>	<input type="text"/>	<input type="text"/>			Delete Line

OK Cancel Delete

Physical Inventory

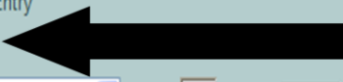
STK Qty - Once updated, the stock quantity field will be updated. The system converts the value to the stocking unit of measure quantity.

If the quantity entered is incorrect, just type of the incorrect count quantity and re-enter it. Once you are done, click 'OK'. The new count will be displayed.

When the operator has entered the quantity and it is correct, they can simply click inside the "scan" field and scan the bar code for the next item to inventory.

Notes:

LEESAR.TEST Physical Inventory Tag Entry

Back to Menu Logout 

Scan Tag# Whse

Item# [Inquiry](#)

Desc Lot#

Location Count Stk UM

	U/M		QTY	COUNT	QTY	STK	QTY	
1.	CS	<input type="text"/>	50	<input type="text"/>	1	<input type="text"/>	50	Delete Line
2.	BX	<input type="text"/>	10	<input type="text"/>		<input type="text"/>		Delete Line

OK Cancel Delete

Physical Inventory

When the last item has been counted and entered, the operator can log off as follows:
Click on the "Logout" button.

Notes:

LEESAR.TEST Wireless Receiving Putaway

Receipt Date Receiver Receiving Location

SCAN Receiver

SCAN Location

PO Receipts

This process allows the user to receive in a purchase order.

SCAN Receiver – Scan the receiver number from the receiving form and press the trigger on the scanner’s handle. The system will then display the item information for the receiver.

Notes:

LEESAR TEST Wireless Receiving Putaway

Back to Menu Logout

Receipt Date 12/14/07 Receiver 112028 Receiving Location WA01-01-1

SCAN Receiver

SCAN Location

1.KND6818

BE16-03-1

Open

4 0 4 ←

*PAD.ALCOHOL MED 2PLY

200/BX

2.KND1180600777

BD15-05-3

Open

2 0

SYRINGE 6CC LUER LOCK TIP

SOFTPACK STERILE 100/BX

Previous Next



PO Receipts

Receipt Date – The date the purchase order was received.

Receiver – The receiver number is displayed.

Receiving Location - The receiving location is displayed.

All items on the receiver will be listed. The location that the item will be moved to are displayed underneath the item number.

Input the quantity to put away for the item, then hit the TAB key. This system will then prompt: "OK to put Away *item#* to *location#*"

Click "OK" if correct. Click "CANCEL" if this is incorrect.

Notes:

LEESAR TEST Wireless Receiving Putaway

Back to Menu Logout

4 put Away in BE16-03-1

Receipt Date 12/14/07 Receiver 112028 Receiving Location WA01-01-1

SCAN Receiver

SCAN Location

1.KND6818

BE16-03-1

Complete

0 0

*PAD ALCOHOL MED 2PLY

200/BX

2.KND1180600777

BD15-05-3

Open

2 0

SYRINGE 6CC LUER LOCK TIP

SOFTPACK STERILE 100/BX

Previous Next

PO Receipts

The system will then print on the screen the quantity put away and the location it was put in.

When the operator has completed with the receiver, they can click the "Next" button to enter a new receiver.

Notes:

Five horizontal lines for notes.

LEESAR.TEST Replenishment Picking

Back to Menu Logout

[Next Transfer](#)

Transfer ID: 016828

Scan Location:

Product #	Stat	Trans From
Qty	From Loc	Trans To
Over	To Loc	Description

Previous Next

Open: Picked: Complete: All:

OK Cancel Delete

Replenishment Picking

Throughout the day, and once at night the system advises the users to replenish inventory by transferring specific quantities of required products. Each transfer consists of two transactions, a “pick” of an the item from one location, and a “put away” of the item to another location. To process a Replenishment Picking:

Each group of orders may produce a transfer.

Transfer ID – Click inside the field and enter the replenishment number that appears on the transfer request, then click inside the “Scan Location” field to begin.

Notes:

LEESAR.TEST Replenishment Picking

[Next Transfer](#)

Transfer ID:

Scan Location:

Product #	Stat	Trans From
Qty	From Loc	Trans To
Over	To Loc	Description
1.KIM90621	Open	
<input type="text"/>	02103707A1	
<input type="text"/>	CD03-02-3	GOWN.SURGX-LG.STR.

Product #	Stat	Trans From
Qty	From Loc	Trans To
Over	To Loc	Description
2.TRA87-HS4050	Open	
<input type="text"/>	BA07-05-5	
<input type="text"/>	TB11-01-2	BAG HYPERINFLATION INFANT

Product #	Stat	Trans From
Qty	From Loc	Trans To
3.TRA77-8058	Open	
<input type="text"/>	BA17-04-4	

Replenishment Picking

The items to be picked from the bulk area will be displayed by location.

Product # - The item number the system flagged for a replenishment.

Stat – The status of the item to be replenished.

Trans From – Used in the Replenishment Putaway process.

Qty – The number of cases to pull.

From Loc – The location in the bulk area for this product.

Over – Type a quantity in this field to override the system suggested quantity.

To Loc – The destination location in the warehouse where the product will be moved to.

Description – The item description.

Once you have picked the appropriate number of boxes for this product, scan the bar code label on the shelf at this location.

Notes:

LEESAR TEST Replenishment Picking

Back to Menu Logout

1 picked from 02103707A1

Next Transfer:

Transfer ID: 016828

Scan Location:

Product #	Qty	Over	Stat	From Loc	To Loc	Trans From	Trans To	Description
1. TRA87-HS4050			Open	BA07-05-5				
				TB11-01-2		BAG HYPERINFLATION INFANT		
2. TRA77-8058			Open	BA17-04-4				
	3			TH04-06-3		MASK ADULT VENTURI		
3. MEDMDS80335			Open					

Replenishment Picking

After scanning the bar code at the location, if you are at the correct location, the screen will display the system's acknowledgement that you have taken these boxes off the shelf. At this point, the system will subtract this quantity of product from the bulk area location.

Also, the system will display the next item to pick with the location and quantity.

Notes:

LEESAR TEST Replenishment Picking

Back to Menu Logout

1 picked from 02103707A1

Next Transfer

Transfer ID: 016828

Scan Location: BB10-04-2

Product #	Stat	Trans From
Qty	From Loc	Trans To
Over	To Loc	Description

1.TRA87-HS4050	Open	
	BA07-05-5	
	TB11-01-2	BAG HYPERINFLATION INFANT

Product #	Stat	Trans From
Qty	From Loc	Trans To
Over	To Loc	Description
2.TRA77-8058	Open	
3	BA17-04-4	
	TH04-06-3	MASK ADULT VENTURI

Product #	Stat	Trans From
Qty	From Loc	Trans To
3.MEDMDS80335	Open	

Replenishment Picking Missing Barcode Label

If the requested bar code label is missing or damaged, simply input the location into the Scan Location field.

Notes:

LEESAR TEST Replenishment Picking

Back to Menu Logout

Invalid Scan

Next Transfer

Transfer ID: 016828

Scan Location: |

Product #	Stat	Trans From
Qty	From Loc	Trans To
Over	To Loc	Description
1.TRA87-HS4050	Open	
	BA07-05-5	
	TB11-01-2	BAG HYPERINFLATION INFANT
2.TRA77-8058	Open	
Qty	From Loc	Trans To
3	BA17-04-4	
Over	To Loc	Description
	TH04-06-3	MASK ADULT VENTURI
3.MEDMDS80335	Open	
Qty	From Loc	Trans To

Replenishment Picking

If you scan the wrong location, or if you scan the same location more than once, the system will display the message "Invalid Scan".

Notes:

LEESAR TEST Replenishment Picking

Back to Menu Logout

2 picked from BB16-01-1

Next Transfer

Transfer ID: 016828

Scan Location:

Product #	Stat	Trans From
Qty	From Loc	Trans To
Over	To Loc	Description

1. TRA77-8058	Open	
	3 BA17-04-4	
2	TH04-06-3	MASK ADULT VENTURI

Product #	Stat	Trans From
Qty	From Loc	Trans To
Over	To Loc	Description
2. SLOKH-400	Open	
	1 BC06-05-1	
	TB13-03-6	KNEE HIGH STA-DRI REG

Product #	Stat	Trans From
Qty	From Loc	Trans To
3. KIM22103	Open	

Replenishment Picking
Quantity Override

If there is not enough inventory on the shelf to satisfy the transfer request, click in the override box located under the requested quantity and enter the actual quantity taken off the shelf.

Notes:

LEESAR.TEST Replenishment Picking

[Next Transfer](#)

Transfer ID:

Scan Location:

Product #	Stat	Trans From
Qty	From Loc	Trans To
Over	To Loc	Description

Open: Picked: Complete: All:

Replenishment Picking

Once the Replenishment Picking is complete, click on the OK button.

Notes:

LEESAR.TEST Replenishment Put-away

Back to Menu Logout

Transfer ID: 016828

Scan Location:

Product #	Stat	Trans From
Qty	From Loc	Trans To
Over	To Loc	Description

Previous Next

Open: Picked: Complete: All:

OK Cancel Delete

Replenishment Put Away

Throughout the day, and once at night the system advises the users to replenish inventory by transferring specific quantities of required products. Each transfer consists of two transactions, a "pick" of an the item from one location, and a "put away" of the item to another location. To process a Replenishment Put Away:

Transfer ID – Click inside the field and enter the replenishment number that appears on the transfer request, then click inside the "Scan Location" field to begin.

Notes:

LEESAR TEST Replenishment Put-away

Back to Menu Logout

Transfer ID: 016828

Scan Location:

Product #	Stat	Trans From	Qty	From Loc	Trans To	Over	To Loc	Description
1.SMPSW-2003	Picked		14					
			14	CD13-03-1				
				BB16-04-1	*USE ARZ42268			

Product #	Stat	Trans From	Qty	From Loc	Trans To	Over	To Loc	Description
2.HSP0798303	Picked		1					
			1	CA03-02-1				
				CC10-02-1	SOLIV.0.9%.SOD.CHLLC50			

Product #	Stat	Trans From	Qty	From Loc	Trans To	Over	To Loc	Description
3.KIM90621	Picked		1					
			1	02103707A1				
				CD02-02-1	CCUNPLD02VLC02TD			

Notes:

Replenishment Put Away

The system will display the items that you pick, in location sequence. Keep in mind, you do not have to start with the first location listed. If you prefer, after you have put the items on the shelf, click in the "Scan Location:" field and scan the associated bar code label on the shelf.

When you scan a put away location for an item that you changed the quantity when you picked it, the system will display the quantity that you picked, not the quantity that the system requested.

- Product #** - The item number.
- Stat** - The status of the item to be replenished.
- Trans From** - The quantity to be put away.
- Qty** - The number of cases to pull.
- From Loc** - The location in the bulk area for this product.
- Over** - Type a quantity in this field to override the system suggested quantity.
- To Loc** - The destination location in the warehouse where the product will be moved to.
- Description** - The item description.

LEESAR TEST Replenishment Put-away

Back to Menu Logout

140 moved to BB16-04-1

Transfer ID: 016020

Scan Location:

Product #	Stat	Trans From	Qty	From Loc	Trans To	Over	To Loc	Description
1.HSP0798303	Picked		1					
			1	CA03-02-1				
				CC10-02-1	SOL.IV.0.9%.SOD.CHLLC50			
Product #	Stat	Trans From	Qty	From Loc	Trans To	Over	To Loc	Description
2.KIM90621	Picked		1					
			1	02103707A1				
				CD03-02-3	GOWN.SURG.X-LG.STR.			
Product #	Stat	Trans From	Qty	From Loc	Trans To	Over	To Loc	Description
3.KIM90621	Picked		0					
				BH18-05-3				

Replenishment Put Away

After scanning the put away location, the system will display that the transfer of this item has been completed, and the inventory for the put away location has now been increased.

Notes:

LEESAR.TEST Replenishment Put-away

Back to Menu Logout

Invalid Scan

Transfer ID: 010020

Scan Location:

Product #	Stat	Trans From
Qty	From Loc	Trans To
Over	To Loc	Description
1.HSP0798303	Picked	
1	CA03-02-1	
	CC10-02-1	SOL.IV.0.9%.SOD.CHLLC50
Product #	Stat	Trans From
2.KIM90621	Picked	
Qty	From Loc	Trans To
1	02103707A1	
Over	To Loc	Description
	CD03-02-3	GOWN.SURG.X-LG.STR.
Product #	Stat	Trans From
3.KIM90621	Picked	
Qty	From Loc	Trans To
	BH18-05-3	

Replenishment Put Away

If you scan the wrong location, or if you scan a location that is not on your transfer, the system will display the message **“Invalid Scan”**. This means you are attempting to put an item in the wrong location.

Notes:

LEESAR TEST Replenishment Put-away

Back to Menu Logout

50 moved to TH05-01-1

Transfer ID: 016828

Scan Location:

Product #	Stat	Trans From
Qty	From Loc	Trans To
Over	To Loc	Description

Previous Next

Open: Picked: Complete: All:

OK Cancel Delete

Replenishment Put Away

Once the Replenishment Put Away is complete, click on the OK button.

Notes:

LEESAR.TEST Replenishment Put-away

Back to Menu Logout

Transfer 016828 closed.

Transfer ID: 016828

Scan Location:

Product #	Stat	Trans From
Qty	From Loc	Trans To
Over	To Loc	Description

Previous Next

Open: Picked: Complete: All:

OK Cancel Delete

Replenishment Put Away

When the Replenishment Put Away is complete, the system will display the message "Transfer XXX closed."

Notes:

LEESAR.TEST MDS Wireless Picking Processor

Back to Menu Logout

Customer: Ship Via:

Release# View All: View Skipped:

Ship To: 01619640001 CARDIOHP - CA 712000

Scan Location: 01619642001 CATHLB HP-CAR 711000

Previous Next

Cartons :

VERIFY AUDIT

Picking

When new orders enter the system, a supervisor assigns which orders they would like picked by which picker. The supervisor may assign several orders to a picker and a priority that they would like those orders to be picked.

Before you begin picking, you select an order that has been assigned to you. There are two ways to do this. The first option is for the operator to click on the drop down arrow next to the Release# field to see a list of all releases assigned to the picker. The releases are sorted by priority. The second option is to manually type in the release number in the field.

Notes:

LEESAR.TEST MDS Wireless Picking Processor

Back to Menu Logout

Customer: 711000 Ship Via: HT

Release# 01619642001 View All: View Skipped:

Ship To: CATHLB HP-

Scan Location:

Product Number

1.HST0798309

AA08-01-1

Quantity to be Picked

2 CS

Stocking Unit of Measure

SOL.IV.NACL.9%.1000ML

Item Description

2.BRC0270-1316-40

AB05-04-1

3 BX

MEDIA.ISOVUE.370.200ML.

(NO TRANSER DEVICE REQ)

3.LSRCARDCATHB

BE02-01-1

7 EA

TRAY.CARDIAC.CATH.

Picking

The selected release will be displayed.

Customer – The customer number is displayed.

Ship Via – The shipping method code is displayed.

Ship To – The ship to code is displayed.

Also displayed is the information about the products to be picked for this release. Please see the screen shot for details.

Notes:

LEESAR.TEST MDS Wireless Picking Processor

Back to Menu Logout

Customer: 711000 Ship Via: HT

Release# 01619642001 View All: View Skipped:

Ship To: CATHLB HP-

Scan Location:

1.HST0798309

AA08-01-1
2 CS
SOL.IV.NACL.9%.1000ML

2.BRC0270-1316-40

AB05-04-1
3 BX
MEDIA.ISOVUE.370.200ML
(NO TRANSER DEVICE REQ)

3.LSRCARDCATHB

BE02-01-1
7 EA
TRAY.CARDIAC.CATH.

Picking

To pick the first item, go to the first location and pick the displayed quantity.

Next, the cursor should be blinking inside the "Scan Location" field. If not, just click inside the field. Then scan the bar code label on the shelf that matches the location that was just picked.

Notes:

Five horizontal lines for notes.

LEESAR.TEST MDS Wireless Picking Processor

Back to Menu Logout

Customer: 711000 Ship Via: HT

Release# 01619642001 View All: View Skipped:

Ship To: CATHLB HP-

Scan Location:

1.HST0798309

AA08-01-1

2 CS

SOL.IV.NACL.9%.1000ML

Windows Internet Explorer

OK to pick Product HST0798309 , qty 2 CS

OK Cancel

2.BRC0270-1316-40

AB05-04-1

3 BX

MEDIA.ISOVUE.370.200ML

(NO TRANSER DEVICE REQ)

3.LSRCARDCATHB

BE02-01-1

7 EA

TRAY.CARDIAC.CATH.

Picking

When the correct bar code label for a location is scanned, a confirmation box will be displayed. This is to verify that you have picked the correct product and quantity.

If you have picked the correct product and quantity, click on the "OK" button to proceed to the next item to be picked.

Notes:

LEESAR.TEST MDS Wireless Picking Processor

Back to Menu Logout

24 picked from AA08-01-1

Customer: 711000 Ship Via: HT

Release# 01619642001 View All: View Skipped:

Ship To: CATHLB HP-

Scan Location:

1.BRC0270-1316-40

AB05-04-1

3 BX

MEDIA.ISOVUE.370.200ML

(NO TRANSFER DEVICE REQ)

2.LSRCARDCATHB

BE02-01-1

7 EA

TRAY.CARDIAC.CATH.

3.BOS04527-01

BE19-04-1

3 EA

KIT.ENCORE26.ADV.INFLATIO

Picking

When an item is picked successfully, the system will display the quantity picked and the location it was picked from.

Notes:

LEESAR.TEST MDS Wireless Picking Processor

Back to Menu Logout

Customer: 711000 Ship Via: HT

Release# 01619642001 View All: View Skipped:

Ship To: CATHLB HP-

Scan Location:

1.BRC0270-1316-40



Camera Icon

AB05-04-1
3 BX
MEDIA.ISOVUE.370.200ML
(NO TRANSFER DEVICE REQ)

2.LSRCARDCATHB

BE02-01-1
7 EA
TRAY.CARDIAC.CATH.

3.BOS04527-01

BE19-04-1
3 EA
KIT.ENCORE26.ADV.INFLATIO
(SGL)



Picking Using Images

When looking at a release on the screen, a camera icon will be displayed next to some items. This icon is a button that links the user to images of the product on another screen. If you are confused about which item to pick or what the unit of measure is for that item, just click the camera.

Notes:

Five horizontal lines for notes

LEESAR.TEST MDS Wireless Picking Processor

Back to Menu Logout

Customer: 712000 Ship Via: HT

Release# 01619640001 View All: View Skipped:

Ship To: CARDIOHP-

Scan Location:

1.KND30768678

TB04-02-4

2 PK

PAPER EKG PAGEWRITER

9707

2.KNP30936127

TB16-03-4

45 EA

GEL ULTRASOUND.STR.20GR

01-01

Previous Next

Cartons :

Piece assigned to 1

Manual Override

Windows Internet Explorer

OK to pick Product KND30768678 , qty 2 PK

OK Cancel

VERIFY AUDIT

Picking
Manual Override

The manual override function is used when the picker does not have enough stock of a certain item.

After scanning the location, the confirmation box is displayed. However, if you do not have enough stock to move, simply click the **"CANCEL"** button.

Next click in the Override box field.

Notes:

LEESAR.TEST MDS Wireless Picking Processor

Customer: 712000 Ship Via: HT

Release# 01619640001

Ship To: CARDIOHP-

Scan Location:

1.KND30768678

TB04-02-4

2 PK 1

PAPER EKG PAGEWRITER

9707

LEESAR.TEST MDS Wireless Picking Processor

Customer: 712000 Ship Via: HT

Release# 01619640001

Ship To: CARDIOHP-

Scan Location:

1.KND30768678

TB04-02-4

2 PK

PAPER EKG PAGEWRITER

9707

2.KNP30936127

Windows Internet Explorer

OK to pick Product KND30768678 , qty 1 PK

Picking

Manual Override

Enter the actual quantity that will be picked and click in the "Scan Location" box. (See top slide)

A confirmation box will be displayed to verify the change in quantity, click "OK" to continue. (See bottom slide)

Notes:

LEESAR.TEST MDS Wireless Picking Processor

Back to Menu Logout

1 PK picked from TB04-02-4

Customer: 712000 Ship Via: HT

Release# 01619640001 View All: View Skipped:

Ship To: CARDIOHP-

Scan Location:

1.KNP30936127

TB16-03-4

45 EA

GEL ULTRASOUND.STR.20GR

01-01

Previous Next

Cartons:

Piece assigned to 1

VERIFY AUDIT

Picking
Manual Override

When an item is picked successfully, the system will display the quantity picked and the location it was picked from.

Notes:

LEESAR.TEST MDS Wireless Picking Processor

Back to Menu Logout

1 PK picked from TB04-02-4

Customer: 712000 Ship Via: HT

Release# 01619640001 View All: View Skipped:

Ship To: CARDIOHP-

Scan Location:

1.KNP30936127

TB16-03-4

45 EA

GEL.ULTRASOUND.STR.20GR

01-01

Previous Next

Cartons :

Piece assigned to 1

VERIFY AUDIT

Picking
Completing the Release

The user is done picking items for an order when the system no longer displays any items to be picked. If, after the user has finished picking an order, they want to change the quantity picked for a particular item, they would need to click on the “**AUDIT**” button and go to the Verification screen.

Once the “**AUDIT**” button is clicked, the release is ready to be verified. This process can be completed one of two ways: 1. By clicking on the “**VERIFY**” button, or 2. by clicking on the “**VERIFICATION**” button from the main menu.

Notes:

LEESAR.TEST MDS Wireless Picking Processor

Customer: WDT043337 Ship Via: SM

Release# 01619831001 View Skipped:

Ship To: RESPIRATOR

Scan Location:

Cartons :

Picking
Completing the Release

If all the quantities that were entered while picking the order are correct, the user now need to print the labels for the cartons or totes. To do this, click within the “**Carton**” field and enter the number of labels needed.

Once done, click on the “**Verify**” button to complete this order.

The system will display the message: “Release XXXXXXXXXXXX verified”.

Notes:

LEESAR.TEST MDS Wireless Picking Processor

Back to Menu Logout

Piece Picking has not been completed. ←

Ship To: Customer: Ship Via:

Release# Scan Location:

Product # Location	Pick UM	Override Inv	Description
Previous	Next		

Cartons : 0

VERIFY

OK Cancel Delete

Picking
Completing a Split Order

Some orders need products from both the “Bulk” locations and the “Piece” locations. For these “split” orders, the supervisor may assign one person to pick the items from one of those areas while someone else is asked to pick the rest of the items from the other area.

The “Verify” process can only be completed when both sections of an order have been completed. If a user attempts to verify their portion of an order before the other section is completed, the process will be cancelled and an error message will be displayed.

Notes:

LEESAR.TEST MDS Wireless Picking Processor

Back to Menu Logout

Ship To: Customer: Ship Via:

Release# Scan Location:

Product #	Pick	Override	Description
Location	UM	Inv	

Previous Next

Cartons :

VERIFY

OK Cancel Delete

Verification

The verification process is the last step before the order is shipped to the customer. The supervisor is now able to verify all releases that have been audited and any split orders whose picking is complete.

There are two ways to verify. The first is to verify as an auditor. The user would click the "Release#" text box, then scan the audit label on the order that they are verifying.

The second way to verify is by picker. This is used to verify a picked split order. The user would click the drop down arrow next to the "Release#" text box. This action will display all of the releases assigned to the picker that are ready to be verified. The user would just click on one of the release numbers to begin.

Notes:

LEESAR.TEST MDS Wireless Picking Processor

Back to Menu Logout

Ship To: SMH SERVIC Customer: 00310 Ship Via: SM

Release# 01620278001 Scan Location:

Product # Location	Pick UM	Override Inv	Description
1 KND6818		3	PAD ALCOHOL MED 2PLY
CA01-01-1	BX	2	200/BX

Previous Next

Cartons: 0

VERIFY

OK Cancel Delete

Verification

Once the release number has been selected or scanned, the release to be shipped will be displayed. The user will be able to view the release for accuracy and adjust any of the picked quantities, if necessary.

Ship To – The ship to name is displayed.

Customer – The customer number.

Ship Via – The shipping method code.

Product # - The item number.

Pick – The quantity ordered.

Override – The quantity to be overridden (if necessary).

Description – The item’s description.

Location – The location where the item is located.

UM – The stocking unit of measure.

Inv – The quantity the picker picked.

Once completed, click on the button “**VERIFY**”.

Notes:

LEESAR.TEST MDS Wireless Picking Processor

Back to Menu Logout

Ship To: SMH SERVIC Customer: 00310 Ship Via: SM

Release# 01620278001 Scan Location:

Product # Location	Pick UM	Override Inv	Description
1 KND6818		3 3	PAD ALCOHOL MED 2PLY
CA01-01-1	BX		2 200 BX

Previous Next

Cartons: 0

VERIFY

OK Cancel Delete

Windows Internet Explorer

OK to pick Product KND6818 , qty 3 BX

OK Cancel

Verification

Override Quantities

To override the picked quantity, click in the "Override" text box. Next, type in the correct quantity to be shipped.

This system will then prompt:

"OK to pick Product xxxxx , qty xx"

Click "OK" to proceed.

Notes:

LEESAR.TEST MDS Wireless Picking Processor

Ship To: SMH SERVIC Customer: 00310 Ship Via: SM

Release# 01620278001 Scan Location:

Product # Location	Pick UM	Override Inv	Description
1.KND6818	3	<input type="text"/>	PAD ALCOHOL MED 2PLY
CA01-01-1	BX	3	200/BX

Cartons :

Verification
Override Quantities

Once the quantity is overridden, notice that the invoiced quantity has been changed.

Notes:

LEESAR.TEST MDS Wireless Picking Processor

Ship To: SMH SERVIC Customer: 00310 Ship Via: SM

Release# 01620278001 Scan Location:

Product # Location	Pick UM	Override Inv	Description
1 KND6818	3	<input type="text"/>	PAD ALCOHOL MED 2PLY
CA01-01-1	BX	3	200/BX

Cartons:

Verification
Completing the Release

Once the release had been checked and adjusted for accuracy, enter the total carton count at the bottom of the screen and click **“Verify”**.

This process will then print your labels, packing slips, and invoice the release.

The system will display a message at the top of the screen that: “Release XXXXXXXXXXXX has been verified”.

Notes:

LEESAR.TEST MDS Wireless Picking Processor

Back to Menu Logout

Batch# View Skipped:

Scan Location:

Product #	Pick	Override	Description	Release
Location	UM			
<input type="button" value="Previous"/> <input type="button" value="Next"/>				

AUDIT

OK Cancel Delete

Batch Picking

A supervisor can choose to assign pick tickets to a picker using batches. When this is done, the Batch Picking process would be selected.

Batch# - The batch number can be scanned. Or the picker can click on the drop down arrow next to the field to display all of the batches assigned to them.

Notes:

LEESAR.TEST MDS Wireless Picking Processor

Back to Menu Logout

Batch# 5 View All: View Skipped:

Scan Location:

Product # Location	Pick UM	Override	Description	Release
1. CAR013-0012 BA17-01-2 CARDIAC INTENSIVE	4 TU		LINER.FOAM.PITCHER	01620282001
2. KND6818 BE16-03-1 IMPLANTS	126 CS		PAD ALCOHOL MED 2PLY 200/BX	01619829001

Previous Next

AUDIT

OK Cancel Delete

Batch Picking

The list of items to be picked are displayed.

Product – The item number.

Location – The location the item is stored in is displayed.

Pick – The quantity to be picked.

UM – The unit of measure to pick.

Override – The picker would key in the manual override for any quantity that is not correct.

Description – The item description is displayed.

Release - The release number that the item is assigned to is displayed.

Once all quantities are picked, the user would click on the **“AUDIT”** button.

Notes:

LEESAR.TEST MDS Wireless Picking Processor

Back to Menu Logout

Batch# 5 View All: View Skipped:

Scan Location:

Product # Location	Pick UM	Override	Description	Release
1. CAR013-0012 BA17-01-2 CARDIAC INTENSIVE	4 TU		LINER.FOAM.PITCHER	
2. KND6818 BE16-03-1 IMPLANTS	126 CS	125	PAD ALCOH 200/BX	

Previous Next

AUDIT

OK Cancel Delete



Batch Picking
Override Quantities

To override the pick quantity, click in the "Override" text box. Next, type in the correct quantity to be shipped.

This system will then prompt:
"OK to pick Product xxxxx , qty xx"

Click "OK" to proceed.

Notes:

Where to Get More Information

•To contact support, call 973-777-8050 or fax 973-777-1483

•To access The Systems House's website:
www.tshinc.com

Notes:
