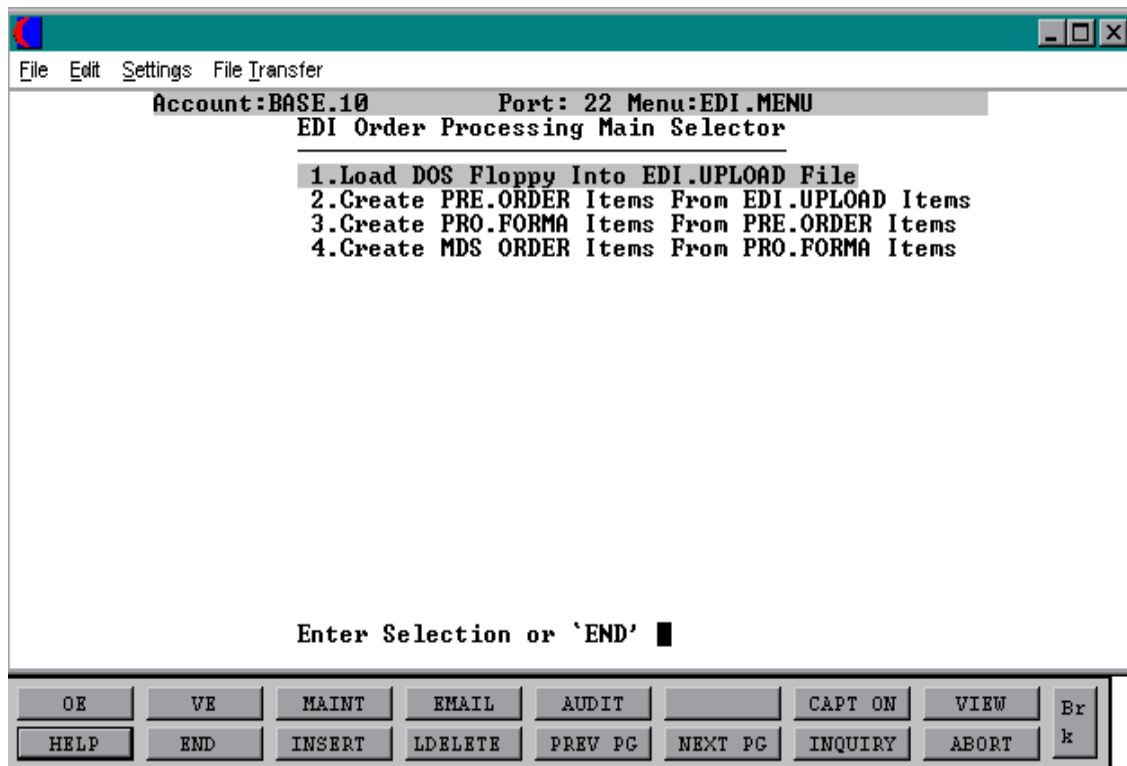


THE SYSTEMS HOUSE, INC.  
MASTER DISTRIBUTION SYSTEM DOCUMENTATION.

TABLE OF CONTENTS

EDI MAIN MENU SCREEN .....	1
ELECTRONIC DATA INTERCHANGE OVERVIEW .....	2
LOAD DOS FLOPPY INTO EDI.UPLOAD FILE .....	3
CREATE PRE.ORDER ITEMS FROM EDI.UPLOAD ITEMS .....	4
CREATE PRO.FORMA ITEMS FROM PRE.ORDER ITEMS .....	5
CREATE MDS ORDERS ITEMS FROM PRO.FORMA ITEMS .....	6

## EDI MAIN MENU SCREEN



## ELECTRONIC DATA INTERCHANGE OVERVIEW

The Master Distributor System Electronic Data Interchange (EDI) Module allows the MDS user to receive orders and transmit invoices via an EDI clearing house.

Each EDI customer is set up as a customer (see customer master maintenance section of documentation) and is also set up as an EDI customer in remote customer maintenance.

Customer purchase orders are “picked up” from an electronic “mailbox” through the EDI network via a personal computer or other medium. The EDI records are then transferred to the main computer system where a conversion program is run for each customer to determine if there are any errors (such as missing ship-to's, etc.) An EDI proof listing and error listing are produced.

MDS order creation will use the converted records to generate orders. The EDI record will be processed through the regular order entry programs such as credit check, product availability, etc.

Invoice transmission via EDI is also available. The invoices for the customer are converted to the specific customer's format, downloaded to the PC, and transmitted to the customer's mailbox via the EDI network.

A partial listing of the organizations which current MDS customers are interfacing to include:

- **WAL-MART**
- **KMART**
- **TARGET**
- **HILLS**
- **ROSES**
- **CALDOR**
- **MERVYN'S**
- **J.C PENNEY**
- **AAFES**
- **MEJERS**
- **DILLARDS**
- **ZALES**
- **MONTGOMERY WARD**
- **SERVICE MERCHANDISE**
- **PAYLESS**
- **VENTURE**
- **TOYS-R-US**
- **BEST**
- **CONSUMER DISTRIBUTING**
- **SPIEGAL**
- **FINGERHUT**

**LOAD DOS FLOPPY INTO EDI.UPLOAD FILE**

PROK NAME	PROK PEDI.UPLOAD
PROGRAM NAME	MDS.BP UTIL.DOSREAD
SELECTION	MENU-30
SELECTION NUMBER	1

**OVERVIEW**

After the orders are loaded from the PC they must go through the Edi.Upload process. This is the first step taken to turn those orders on the floppy into MDS orders. This process will clear the Edi.Upload file and make room for the new orders that have been loaded from the PC.

**OPERATING INSTRUCTIONS****PROCEDURE TO CLEAR EDI.UPLOAD FILE THEN****UPLOAD DOS FLOPPY DISKETTE INTO EDI.UPLOAD FILE.****ENTER FLOPPY AND HIT <RETURN>**

Enter floppy into drive and then hit 'RETURN' to begin upload process.

**CREATE PRE.ORDER ITEMS FROM EDI.UPLOAD ITEMS**

PROK NAME	PROK PEDL.IN.850.010
PROGRAM NAME	MDS.BP EDI.IN.850.010
SELECTION	MENU-30
SELECTION NUMBER	2
FILES ACCESSED	EDI.UPLOAD PARAMETER PRE.ORDER

**OVERVIEW**

This process will write out to a file and create the proper MDS format for the data that will be converted into actual MDS orders.

**OPERATING INSTRUCTIONS****CONVERT EDI.UPLOAD DATA TO PRE.ORDER ITEMS****DO YOU WANT TO CONTINUE (Y/N) ?**

Enter "Y" if you want to continue with the upload or "N" to return to the selector.

**CREATE PRO.FORMA ITEMS FROM PRE.ORDER ITEMS**

PROK NAME	PROK PPRE.ORDER.CONVERT10
PROGRAM NAME	MDS.BP DELETE ELEMENT10 PRE.ORDER.CONVERT10
SELECTION	MENU-30
SELECTION NUMBER	3
FILES ACCESSED	CONTROL PRE.ORDER ERR SSS.USER.XREF SCREEN MASTER

**OVERVIEW**

After the data has been loaded to the Edi.Upload file and formatted correctly in the Pre.Order file, it must be turned into a Pro forma on the MDS system. This process is what will convert data into the MDS Pro-forma so it can subsequently be converted into an order on the system.

**OPERATING INSTRUCTIONS****CONVERT PRE.ORDER FILE TO PRO.FORMA****HIT <RETURN> TO CONTINUE OR 'END'**

Hit 'RETURN' to continue with the conversion or 'END' to return to the selector.

**CREATE MDS ORDERS ITEMS FROM PRO.FORMA ITEMS**

PROK NAME	PROK PCONVERT.PRO.FORMA010
PROGRAM NAME	MDS.BP VALDOE
	ELEMENT10 PF.CONVERT.JOBSTREAM010
SELECTION	MENU-30
SELECTION NUMBER	4
FILES ACCESSED	OPERATOR
	PRO.FORMA

**OVERVIEW**

This is the final step in the EDI process. This step will convert the Pro Formas that are selected, into live orders in the MDS format which can then be printed. The MDS operator will be prompted for a range of Pro Forma numbers to be converted.

**OPERATING INSTRUCTIONS****CONVERT PRO.FORMAS TO LIVE ORDERS****ENTER BEGINNING PRO.FORMA NUMBER TO CONVERT**

Enter the first Pro-forma number to be converted.

**ENTER ENDING PRO.FORMA NUMBER TO CONVERT**

Enter the last Pro-forma you wish to be converted.

THE SYSTEMS HOUSE, INC.  
MASTER DISTRIBUTION SYSTEM DOCUMENTATION

I N D E X

Conversion Program .....	2
Create Mds Order Items from Pro.Forma Items .....	6
Create Pre.Order Items from Edi.Upload Items .....	4
Create Pro.Forma Items from Pre.Order Items .....	5
EDI Network. ....	2
EDI.Upload File .....	3
EDI.Upload Process .....	3
Electronic Data Interchange Overview .....	2
Error Listing .....	2
Invoice Transmission .....	2
Load Dos Floppy into Edi.Upload File .....	3
Order Creation .....	2
Pre.Order File .....	5
Proof Listing .....	2
Remote Customer Maintenance. ....	2