

ODBC 4.0 Client Installation and UPS Worldship Mappings



Notes:



Introduction

- ODBC 4.0 Client
 - For use with Reporting Tools
 - For use with Freight System
 - UPS WorldShip Mappings

Introduction

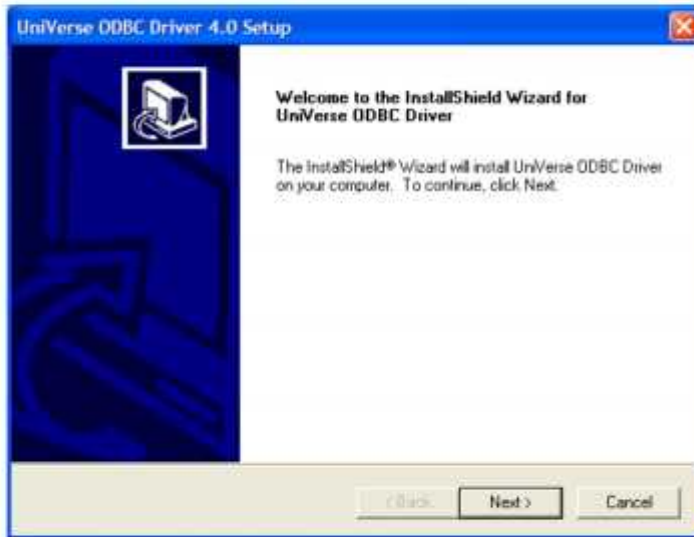
The Universe ODBC 4.0 Client Installation guide describes how to install, configure, and use UniVerse ODBC drivers on client systems.

The second part of the guide, will show you how to create the WorldShip mappings.

Notes:



ODBC 4.0 Client Installation



Installation

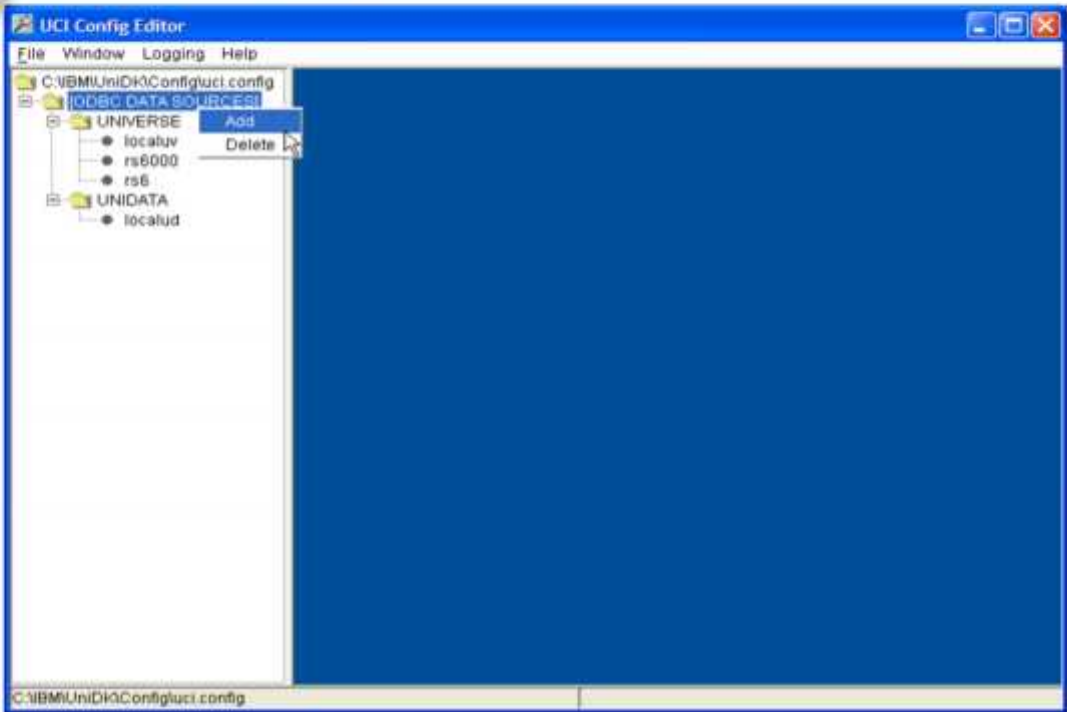
On your PC, download and install the ODBC drivers for Universe version 10.1, by double clicking on the SETUP.EXE file in the directory.

Click on the "NEXT" button throughout the download process to install the software into the default directory.

Notes:



UCI Editor



UCI Editor

Adding New Data Source

Once the ODBC 4.0 client is installed, you will need to add the data source to the UCI Editor.

Go to Start -> All Programs -> IBM U2 -> UniVerse ODBC Driver -> UCI Editor

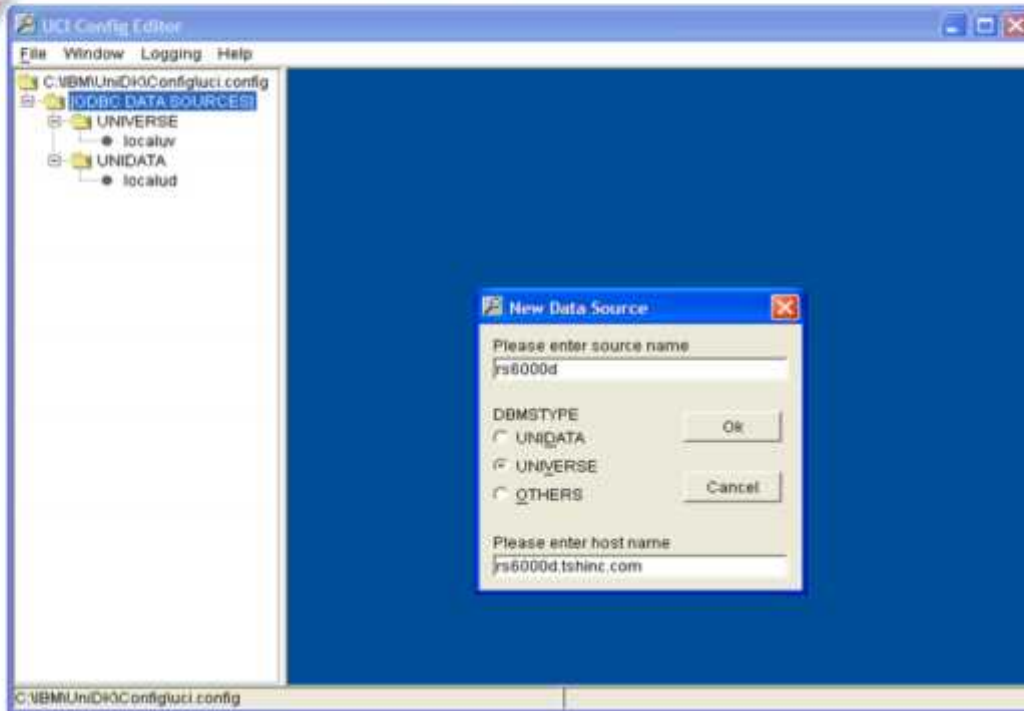
In the UCI Editor, right click on "[ODBC DATA SOURCES]", then click on "ADD".

A "New Data Source" box will be displayed.

Notes:



UCI Editor p2



UCI Editor
Adding New Data Source

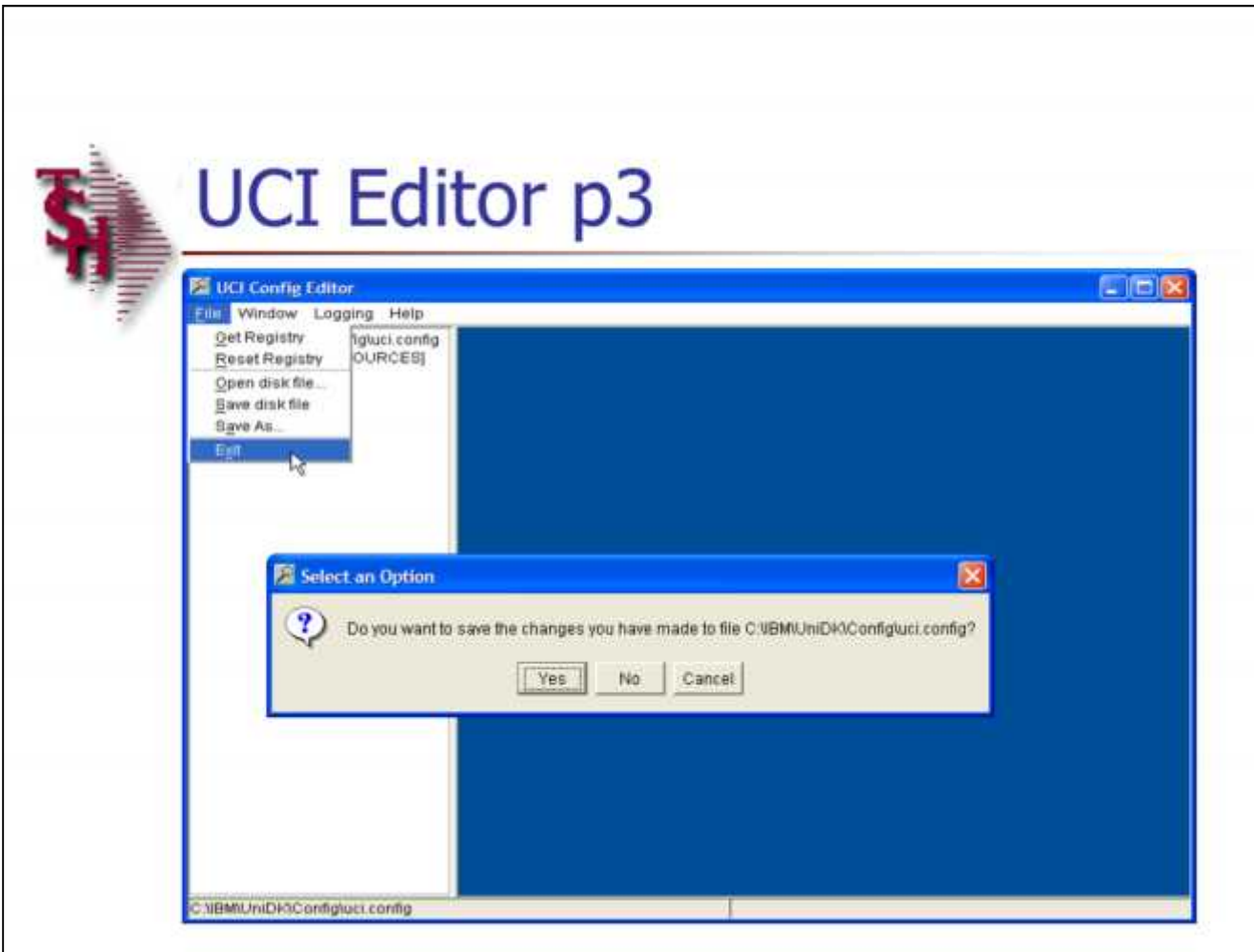
Please enter source name: Enter your server's name.

DBMSTYPE: Select "UNIVERSE" as the database type.

Please enter host name: Enter the host name of your server.

When completed, click on the "OK" button. The information just added will now be showing in window titled "Data Source Adding". From here, click on "SAVE".

Notes:

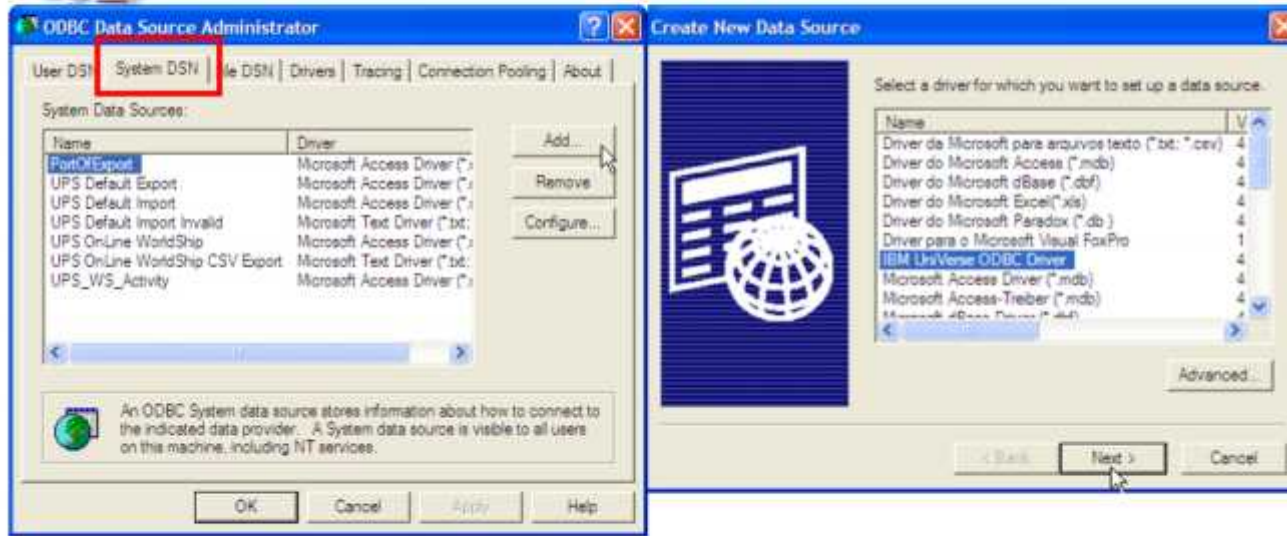


UCI Editor
Adding New Data Source

To complete the process, click on File -> then click on Exit. The system will prompt:
"Do you want to save the changes you have made to file C:\IBM\UniDK\Config\uci.config"
Click on "Yes" to save the changes.

Notes:

Creating a New System Data Source Name



Creating A New System Data Source Name
This step will create a system data source name to be used in reporting tools such as: Excel, Crystal Reports, and Access.

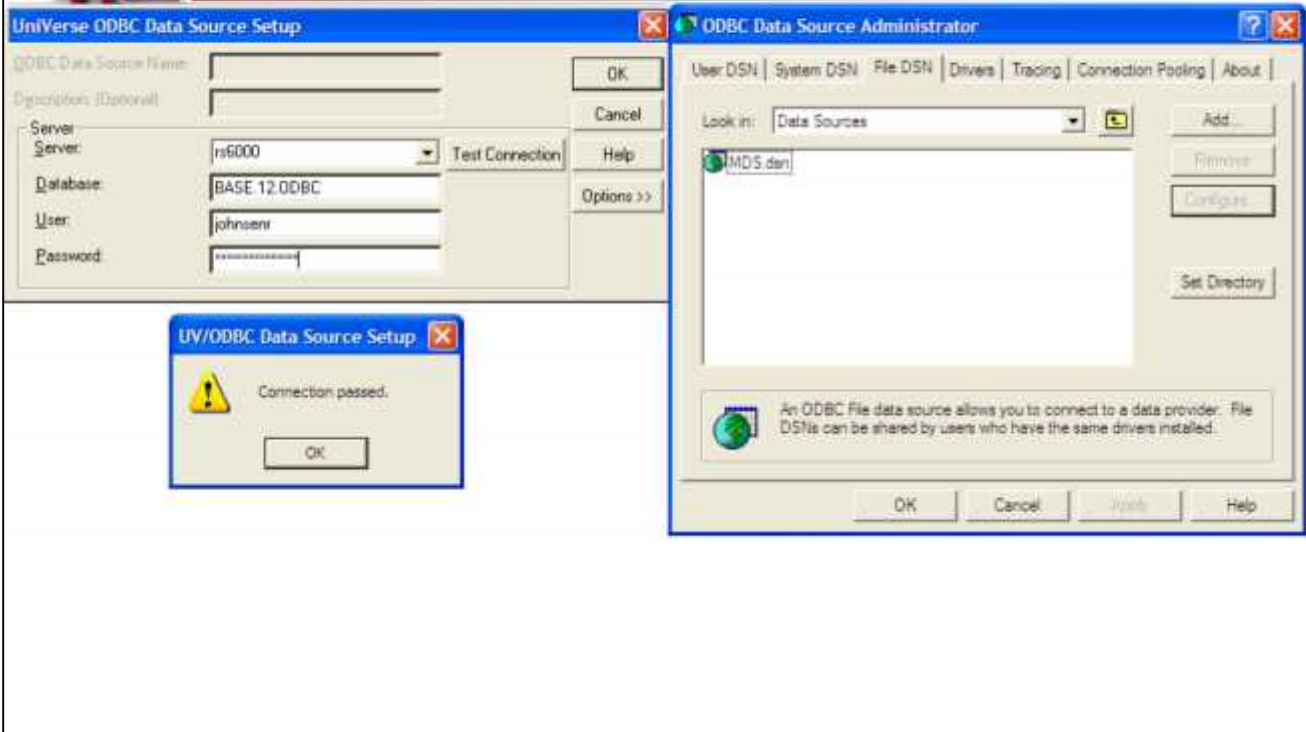
Click on Start -> click on Control Panel -> click on Administrative Tools -> click on Data Sources (ODBC)

From here, click on the tab labeled "System DSN", then click on the "ADD" button to create a new System DSN. See example on the left of page.

A box titled "Create New Data Source" is displayed. Click on the driver "IBM UniVerse ODBC Driver", then click on "Next". See example on the right of page.

Notes:

Creating a New System Data Source Name p2



Creating A New System Data Source Name

UniVerse ODBC Data Source Setup

ODBC Data Source Name: Enter "ACCOUNTNAME.ODBC"

Description: Enter "ACCOUNTNAME.ODBC".

Server: Enter the server's name that was used when creating the data source in the UCI Editor.

Database: Enter the MDS Database name, which is "ACCOUNTNAME.ODBC".

User: Enter the user's login

Password: Enter the user's password.

Once completed, click on the button "Test Connection". If the data source is setup correctly, you should receive the message, "Connection passed".

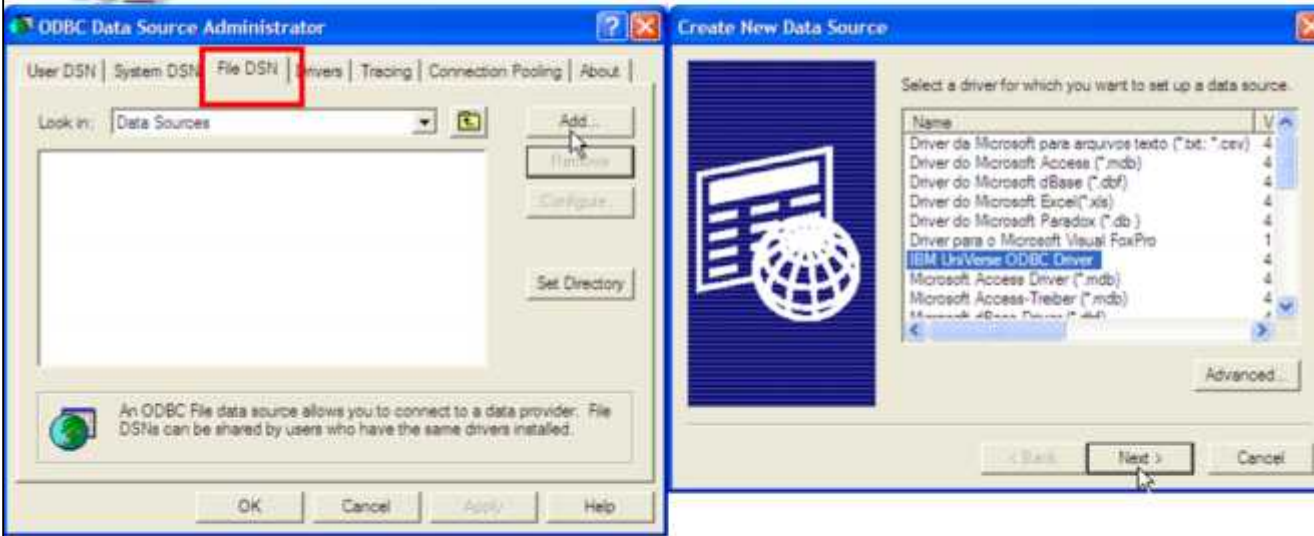
Next, click on "OK" to save the system data source. Once saved, you should be able to see the data source listed (as in example on right).

Click 'OK', you then can close out of Administrative Tools.

Notes:



Creating a New File Data Source Name



Creating A New File Data Source Name

This step will create a system data source name to use with a freight system software, such as UPS WorldShip.

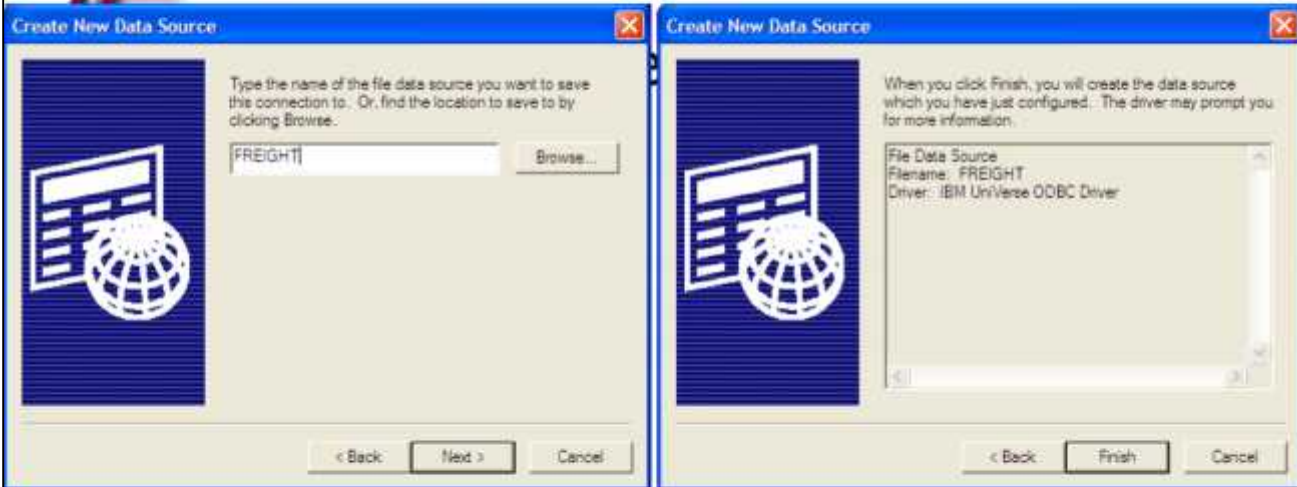
Click on Start -> click on Control Panel -> click on Administrative Tools -> click on Data Sources (ODBC)

From here, click on the tab labeled "File DSN", then click on the "ADD" button to create a new File DSN. See example on the left of page.

A box titled "Create New Data Source" is displayed. Click on the driver "IBM UniVerse ODBC Driver", then click on "Next".

Notes:

Creating a New File Data Source Name p2



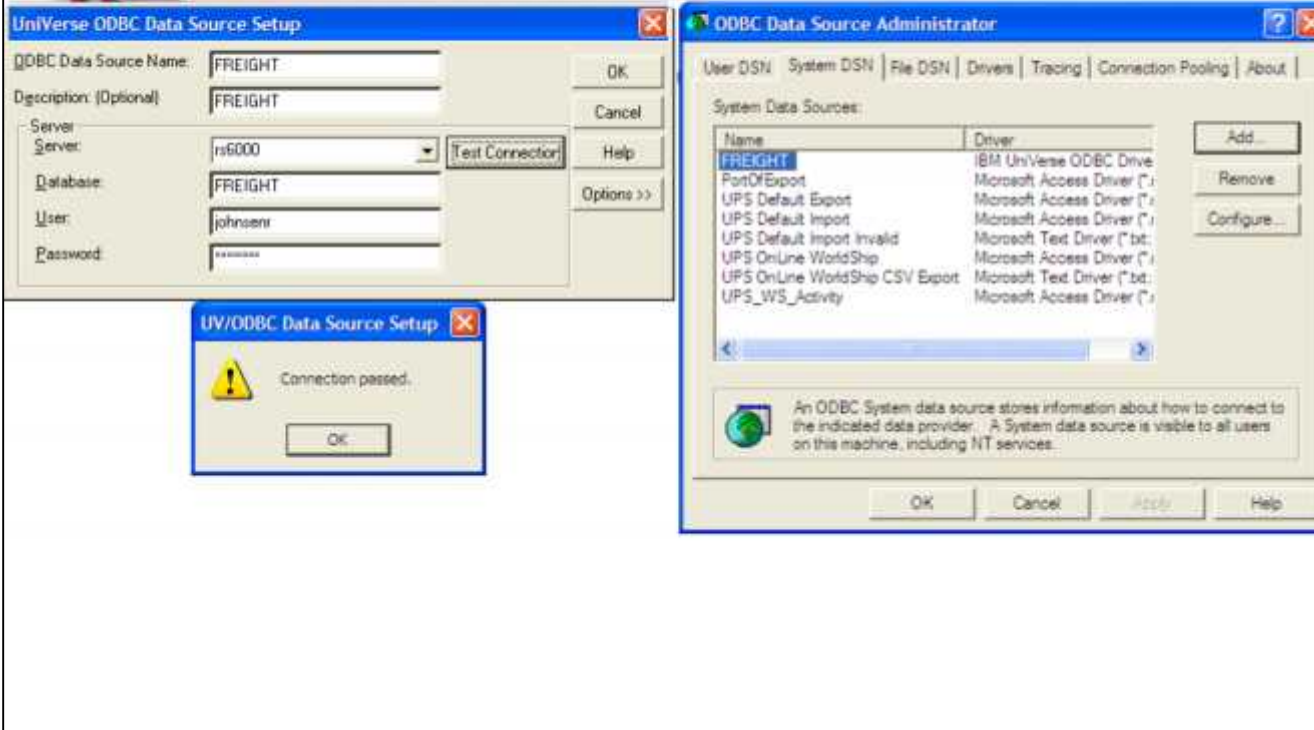
Creating A New File Data Source Name

While creating the new data source, you must give it a name, type in the name "FREIGHT". Then click on the "Next" button.

The last screen titled "Create New Data Source" is displayed. The data source configuration that was just created is listed below. To save information, click on the "FINISH" button. To make any necessary changes, click on the "BACK" button.

Notes:

Creating a New File Data Source Name p3



Creating A New File Data Source Name
UniVerse ODBC Data Source Setup

Server: Enter the server's name (source name) that was used when creating the data source in the UCI Editor.

Database: Enter "FREIGHT".

User: Enter the user's login

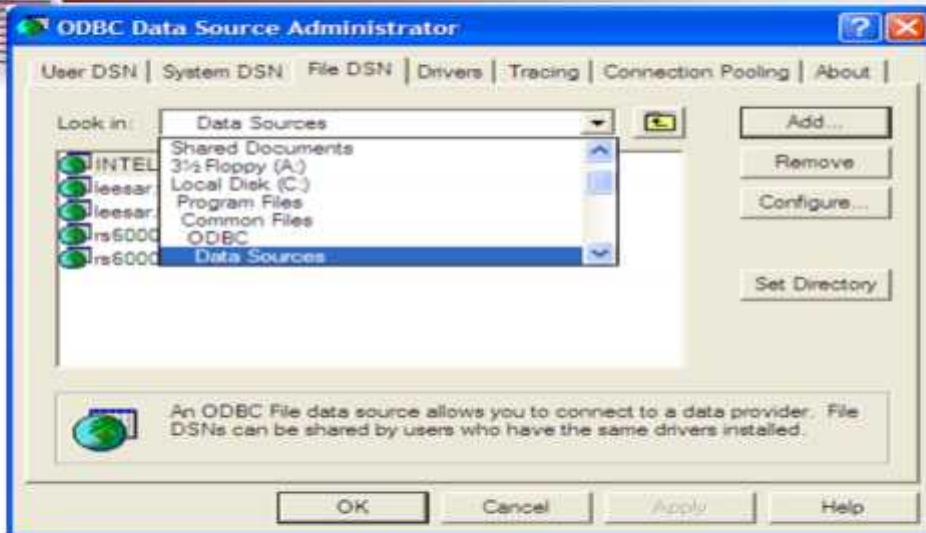
Password: Enter the user's password.

Once completed, click on the button "Test Connection". If the data source is setup correctly, you should receive the message, "Connection passed".

Next, click on "OK" to save the file data source. Once saved, you should be able to see the data source listed (as in example on right).

Notes:

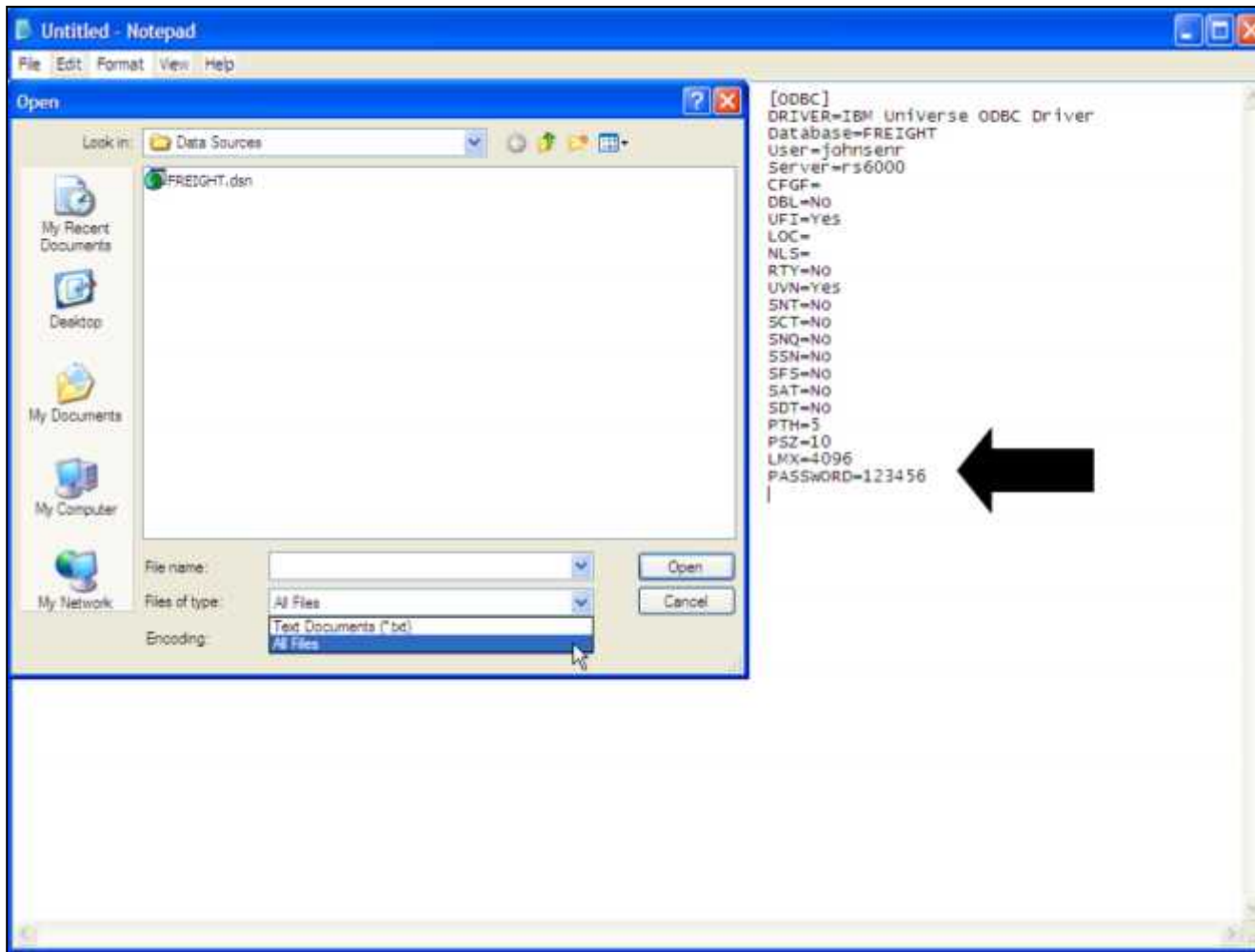
Creating a New File Data Source Name p4



Software

Creating A New File Data Source Name
Data Source path
Click on the drop down arrow listed as "Data Sources". Take note of the directory path that this .dsn is located in. In the example, the data source is located in C:\Program Files\Common Files\ODBC\Data Sources

Notes:



Creating A New File Data Source Name
Adding User's Password to DSN file

This step alleviates the need for the user to enter in his or her password every time they connect to their MDS database while using a report tool, such as Excel.

Go to Start -> click on Run -> type "NOTEPAD" and hit <ENTER>. The notepad program should open on the screen. Go to the path that the file data source is located.

Next, go to the drop down box titled "Files of type" and select "All Files". You should now see your data source. Click on your data source and choose "Open".

Go to the bottom of the file, and on the next line add:

PASSWORD=enter user's password -See example on right

When completed, click on "File" then "Save". You can then close out of Notepad.

Now, when using Excel or another reporting tool, you will be able to use this file data source.

Notes:



Setting up UPS WorldShip Mappings

PAGE 1 *** DICTIONARY LISTING FOR FILE PARAMETER ***10:07:30am 31 Mar 2004

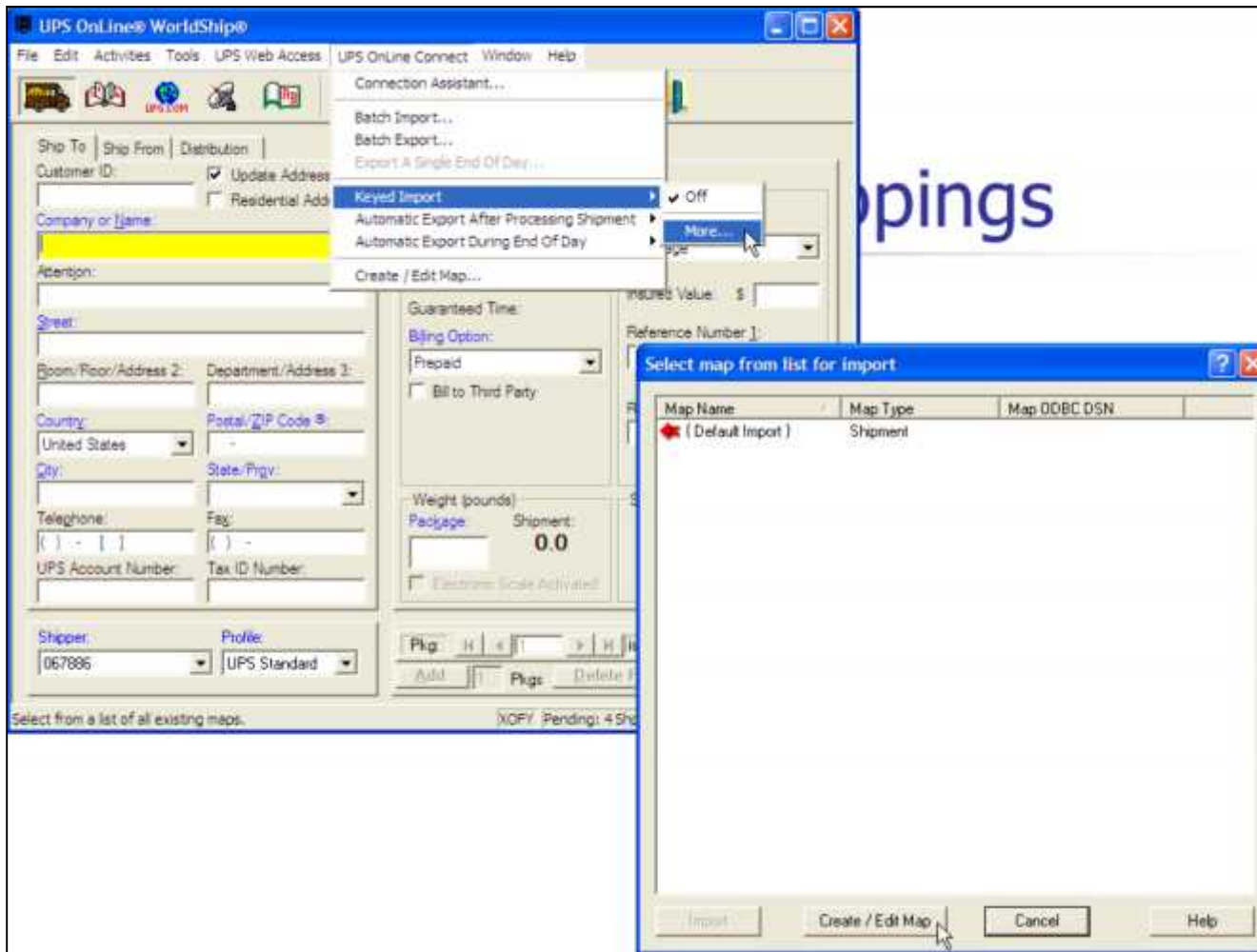
ID.	CID.....	DESCRIPTION.....	CONV.....	C/CORR....	TP	MAX
128	FREIGHT.SYS.USE D	FREIGHT SYSTEM INTERFACE USED (Y/N)			L	1
43	SCALE	SCALE SYSTEM : 'V' = VERIFICATION 'S' = SHIPPING STATION 'N' = NOT USED			L	1

Configuring the UPS WorldShip Mappings
 In order for MDS to send and receive information from UPS WorldShip, as well as the UPS WorldShip software to send and receive information from MDS, certain parameters in the MDS System and mappings in the UPS WorldShip system must be setup prior.

Parameter Settings:
 (128) Freight.Sys.Used - Is the Freight System Interface used (Y/N)

(43) Scale - Is the scale system used?
 V = Verification - The user will be automatically forwarded to the Shipping Update module after verifying a release.
 S = Shipping Station - The user will manually go to the Shipping Update procedure to process the shipment in MDS.
 N = Not used - 'N' is entered here if you are not using the freight system.

Notes:



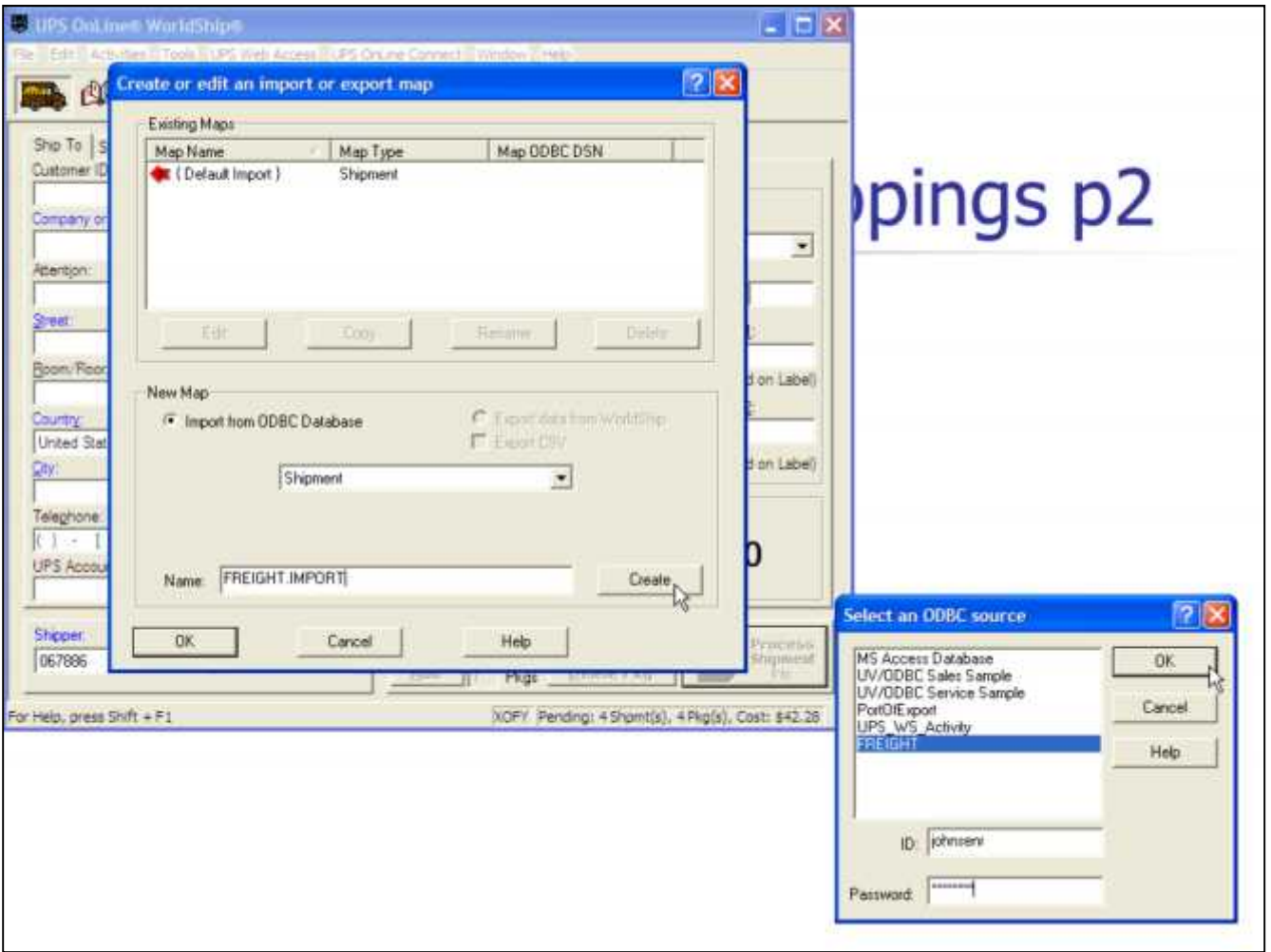
UPS WorldShip Mapping

Freight Import

At this point it is assumed that the UPS WorldShip software is already installed on your pc. If it is not, please install according to their instructions.

Open the WorldShip software. Click on UPS OnLine Connect -> click on Keyed Import -> click on More (as shown in example on left) -> click on Create/Edit Map (as shown in example on right).

Notes:



UPS WorldShip Mapping

Freight Import

A box will be displayed titled, "Create or edit an import or export map". Go to the field labeled "NAME". In the field enter "FREIGHT.IMPORT". Click on the "CREATE" button. (As shown in the example on the left.)

A box will be displayed, titled "Select an ODBC source".

Click on the word "FREIGHT"

Next to "ID" enter the username that will access the MDS software.

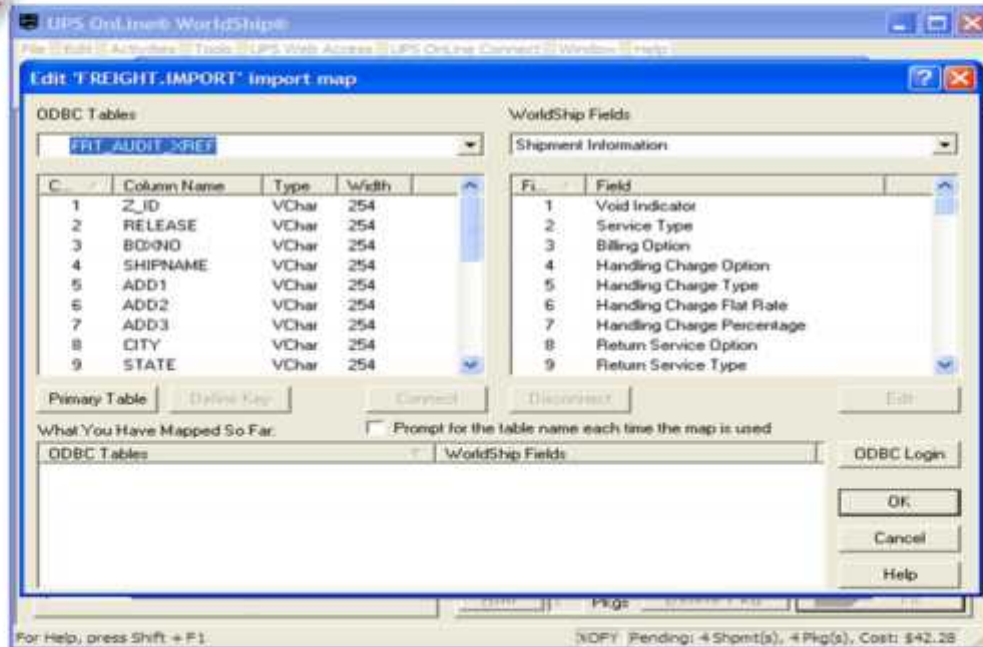
Next to "PASSWORD" enter the username's password.

Click on the "OK" button. (As shown in example on right).

Notes:



UPS WorldShip Mappings p3



UPS WorldShip Mapping

Freight Import

The next step is connecting the ODBC tables to the WorldShip fields.

A box titled, "Edit 'FREIGHT.IMPORT' import map" will be displayed.

On the left hand side there is a drop down box titled "ODBC Tables", click on the drop down box and select "FRT_AUDIT_XREF".

On the right hand side there is a drop down box titled "WorldShip Fields", click on the drop down box and select "Shipment Information".

Now, we will connect the two together. On the left hand side, underneath "FRT_AUDIT_XREF", click on: SATURDAY

Now, on the right hand side, underneath "Shipment Information", click on:

SATURDAY DELIVERY OPTION

Lastly, click on the "Connect" button in the middle of the window.

Next field:

On the left hand side, underneath "FRT_AUDIT_XREF", click on:

SHIP DESC

Now, on the right hand side, underneath "Shipment Information", click on:

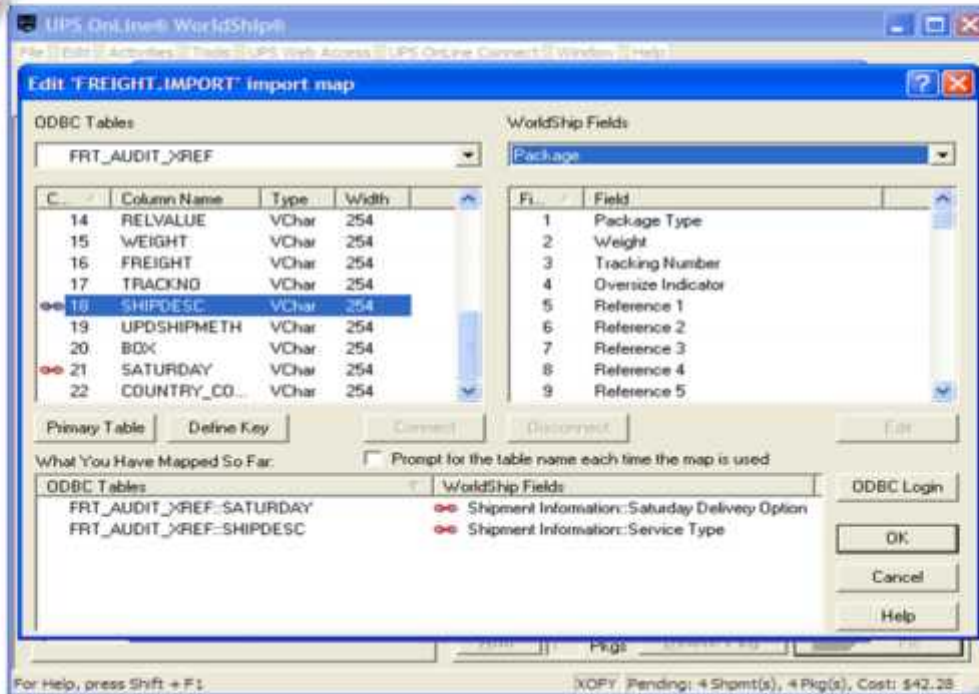
SERVICE TYPE

Lastly, click on the "Connect" button in the middle of the window.

Notes:



UPS WorldShip Mappings p4



UPS WorldShip Mapping

Freight Import

On the left hand side the drop down box titled "ODBC Tables", should still be set on "FRT_AUDIT_XREF".

On the right hand side, underneath the drop down box titled "WorldShip Fields", click on the drop down box and select "Package".

Now, we will connect the two together. On the left hand side, underneath "FRT_AUDIT_XREF", click on:

WEIGHT

Now, on the right hand side, underneath "Package", click on:

WEIGHT

Lastly, click on the "Connect" button in the middle of the window.

Next field:

On the left hand side, underneath "FRT_AUDIT_XREF", click on:

RELEASE

Now, on the right hand side, underneath "Package", click on:

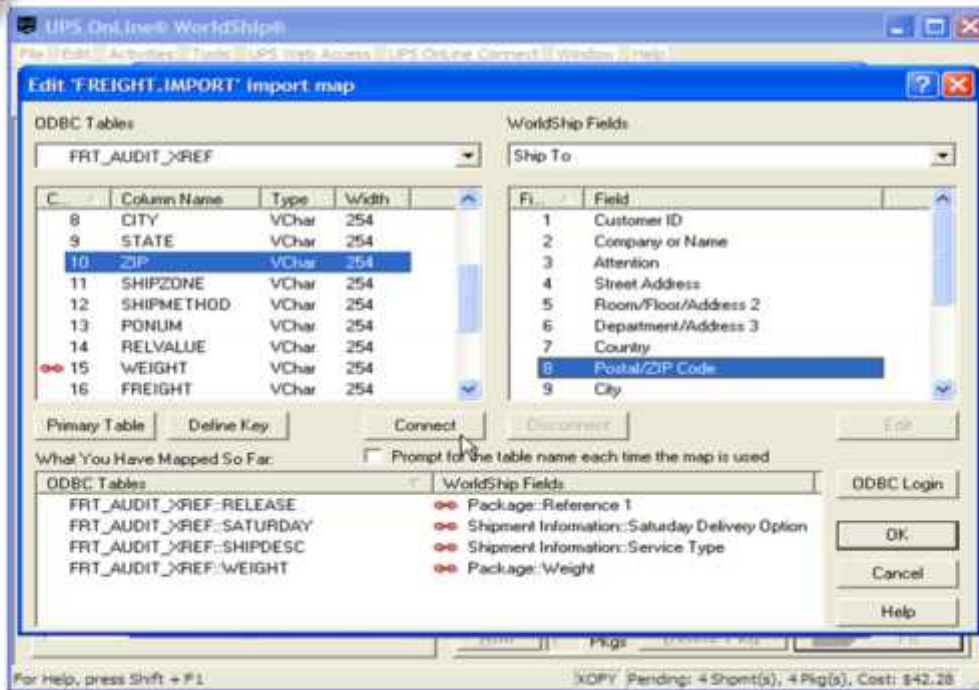
REFERENCE1

Lastly, click on the "Connect" button in the middle of the window.

Notes:



UPS WorldShip Mappings p5



UPS WorldShip Mapping

Freight Import

On the left hand side the drop down box titled "ODBC Tables", should still be set on "FRT_AUDIT_XREF".

On the right hand side, underneath the drop down box titled "WorldShip Fields", click on the drop down box and select "Ship To".

Now, we will connect the two together. On the left hand side, underneath "FRT_AUDIT_XREF", click on: ZIP

Now, on the right hand side, underneath "Ship To", click on:

POSTAL/ZIP CODE

Lastly, click on the "Connect" button in the middle of the window.

Next field:

On the left hand side, underneath "FRT_AUDIT_XREF", click on:

STATE

Now, on the right hand side, underneath "Ship To", click on:

STATE

Lastly, click on the "Connect" button in the middle of the window

Next field:

On the left hand side, underneath "FRT_AUDIT_XREF", click on:

SHIPNAME

Now, on the right hand side, underneath "Ship To", click on:

Notes:

The Systems House, Inc.

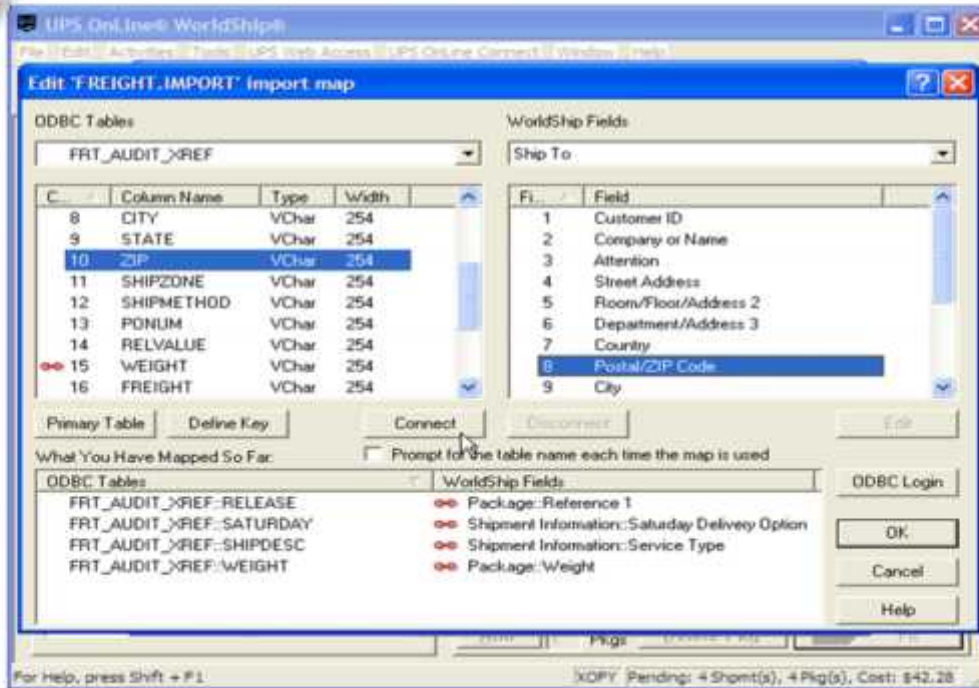
COMPANY OR NAME

Lastly, click on the "Connect" button in the middle of the window.

Notes:



UPS WorldShip Mappings p6



UPS WorldShip Mapping

Freight Import

Continued...

Next field:

On the left hand side, underneath "FRT_AUDIT_XREF", click on:

CITY

Now, on the right hand side, underneath "Ship To", click on:

CITY

Lastly, click on the "Connect" button in the middle of the window.

Next field:

On the left hand side, underneath "FRT_AUDIT_XREF", click on:

ADD 3

Now, on the right hand side, underneath "Ship To", click on:

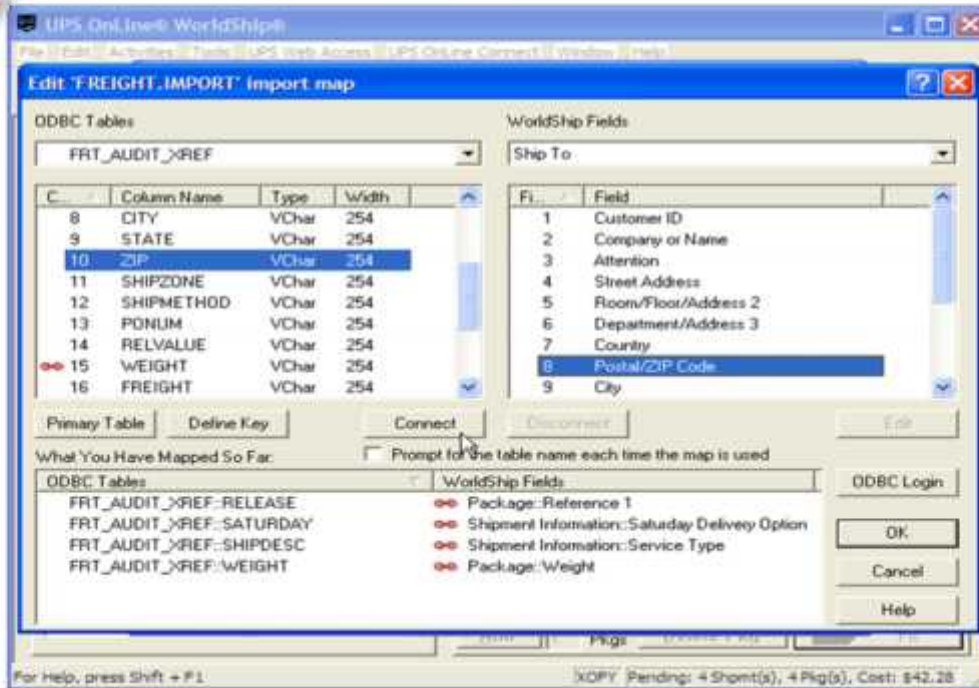
DEPT/ADD 3

Lastly, click on the "Connect" button in the middle of the window.

Notes:



UPS WorldShip Mappings p7



UPS WorldShip Mapping

Freight Import

Continued...

Next field:

On the left hand side, underneath "FRT_AUDIT_XREF", click on:

ADD 2

Now, on the right hand side, underneath "Ship To", click on:

ROMM.FLR/ADD 2

Lastly, click on the "Connect" button in the middle of the window.

Next field:

On the left hand side, underneath "FRT_AUDIT_XREF", click on:

ADD 1

Now, on the right hand side, underneath "Ship To", click on:

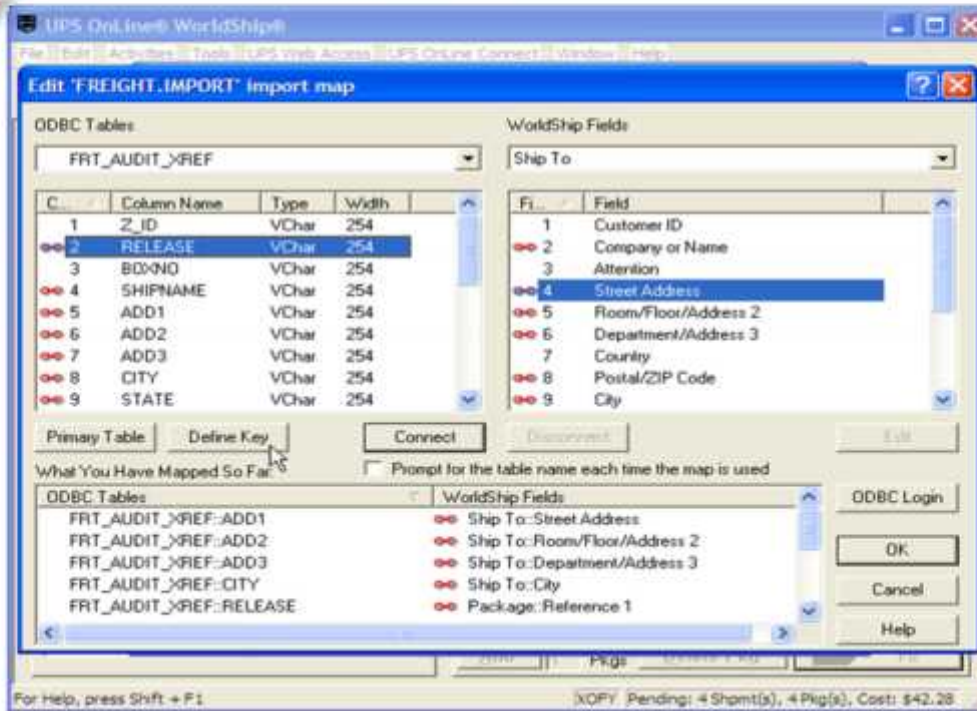
STREET ADDRESS

Lastly, click on the "Connect" button in the middle of the window.

Notes:



UPS WorldShip Mappings p8



UPS WorldShip Mapping

Freight Import

The next step is to define the key for the FREIGHT.IMPORT file.

In the ODBC Tables section, underneath the drop down box titled "FRT_AUDIT_XREF" (this should already be showing), click on the column name "RELEASE".

Next click on the button "DEFINE KEY" (as shown in example)

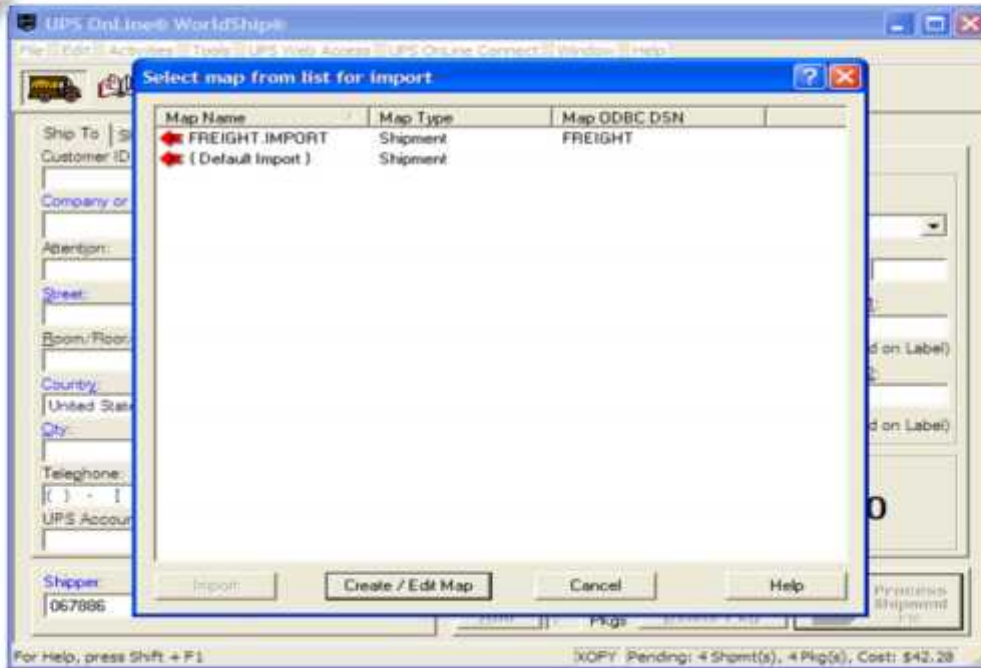
Click on the "OK" button.

A box titled, "Create or edit an import or export map", click on the "OK" button.

Notes:



UPS WorldShip Mappings p9



UPS WorldShip Mapping

Freight Import

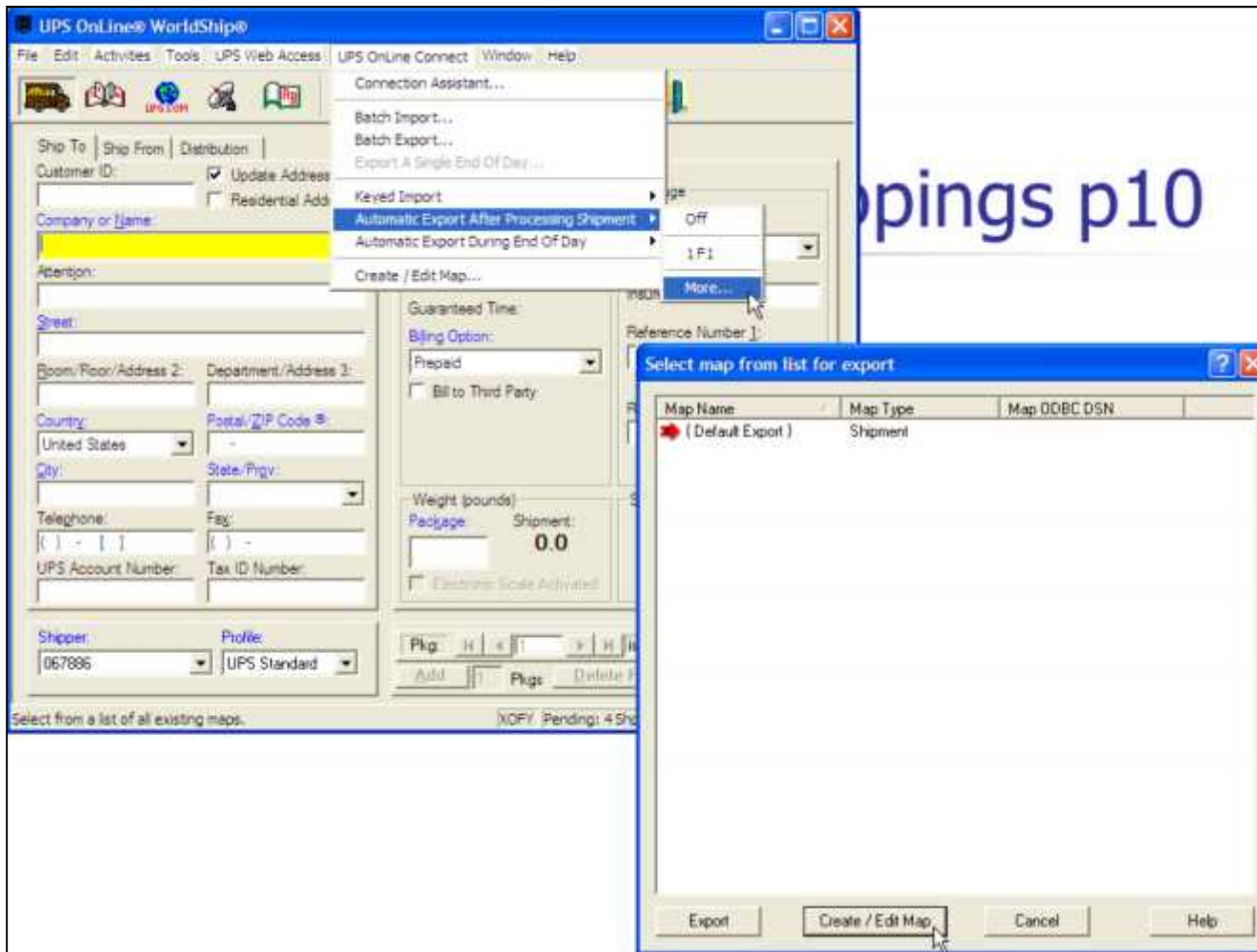
The box titled "Select map from list for import" is displayed. Click on the newly created map, FREIGHT.IMPORT.

Click on the "IMPORT" button.

The "Enter Import Key" box is displayed. This is where the user would enter or scan in the release number. When done, all shipping information from MDS would be displayed.

You can close out the "Enter Import Key" box.

Notes:



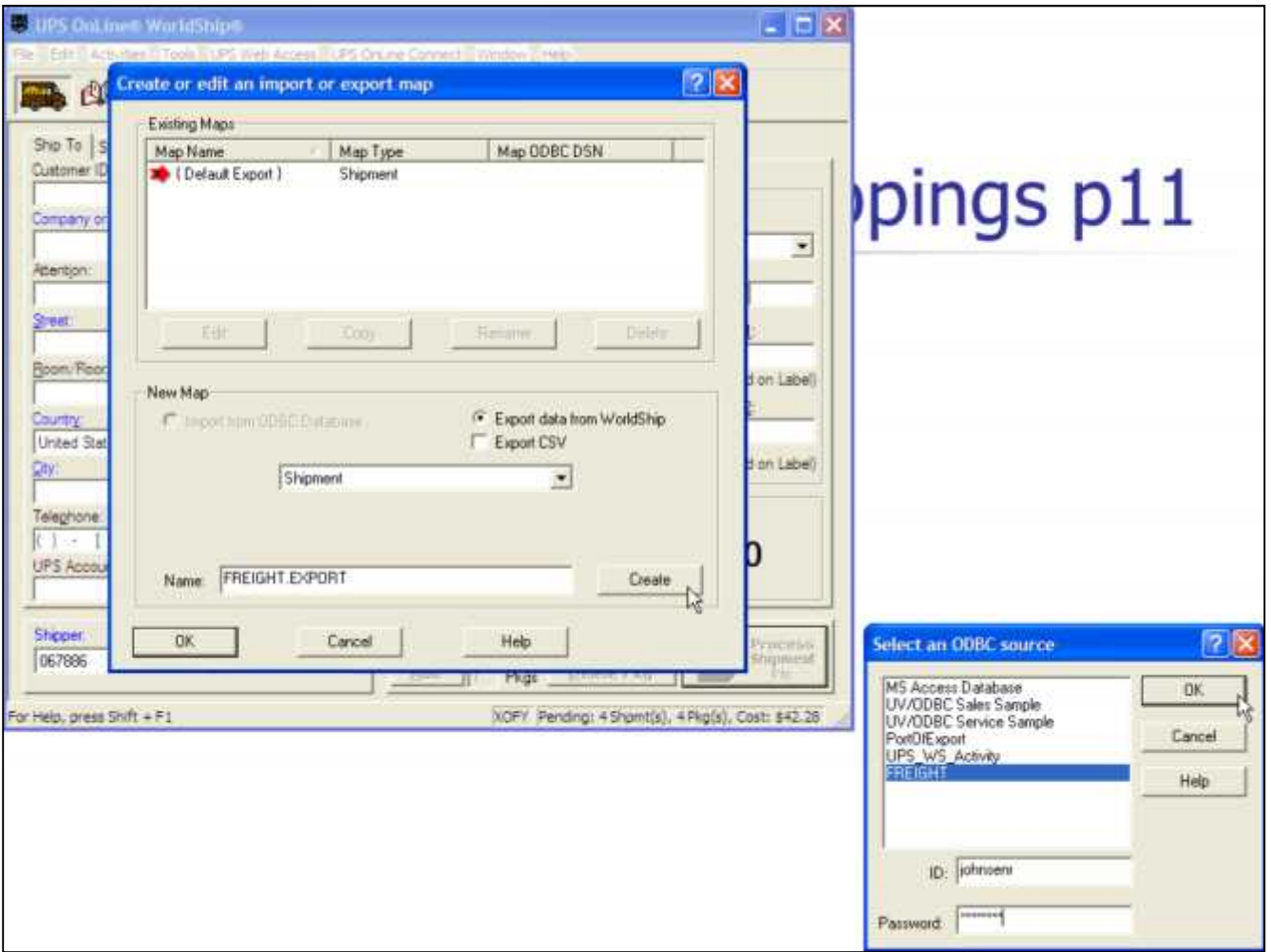
UPS WorldShip Mapping

Freight Export

Click on UPS OnLine Connect -> click on Automatic Export After Processing Shipment -> click on More (as shown in example on left) ->

Then click on Create/Edit Map (as shown in example on right).

Notes:



UPS WorldShip Mapping

Freight Export

A box will be displayed titled, "Create or edit an import or export map". Go to the field labeled "NAME". In the field enter "FREIGHT.EXPORT". Click on the "CREATE" button. (As shown in the example on the left.)

A box will be displayed, titled "Select an ODBC source".

Click on the word "FREIGHT"

Next to "ID" enter the username that will access the MDS software.

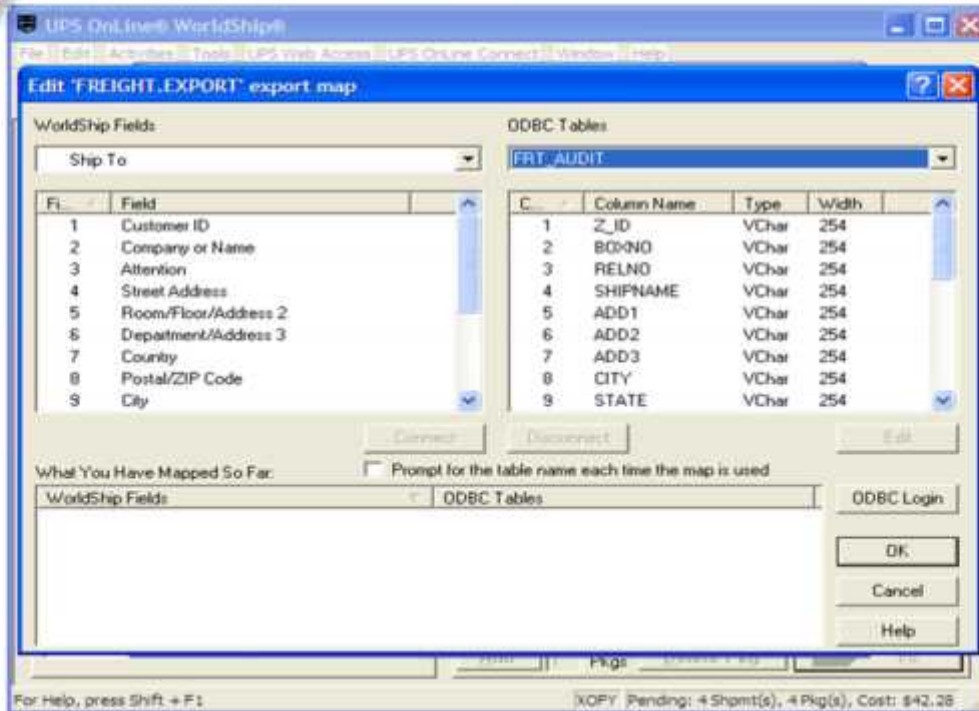
Next to "PASSWORD" enter the username's password.

Click on the "OK" button. (As shown in example on right).

Notes:



UPS WorldShip Mappings p12



UPS WorldShip Mapping

Freight Export

The next step is connecting the ODBC tables to the WorldShip fields.

A box titled, "Edit 'FREIGHT.EXPORT' export map" will be displayed.

On the left hand side there is a drop down box titled "WorldShip Fields", click on the drop down box and select "Ship To".

On the right hand side there is a drop down box titled "ODBC Tables", click on the drop down box and select "FRT_AUDIT".

Now, we will connect the two together. On the left hand side, underneath "Ship To", click on:

STREET ADDRESS

Now, on the right hand side, underneath "FRT_AUDIT", click on:

ADD 1

Lastly, click on the "Connect" button in the middle of the window.

Next field:

On the left hand side, underneath "Ship To", click on:

STATE

Now, on the right hand side, underneath "FRT_AUDIT", click on:

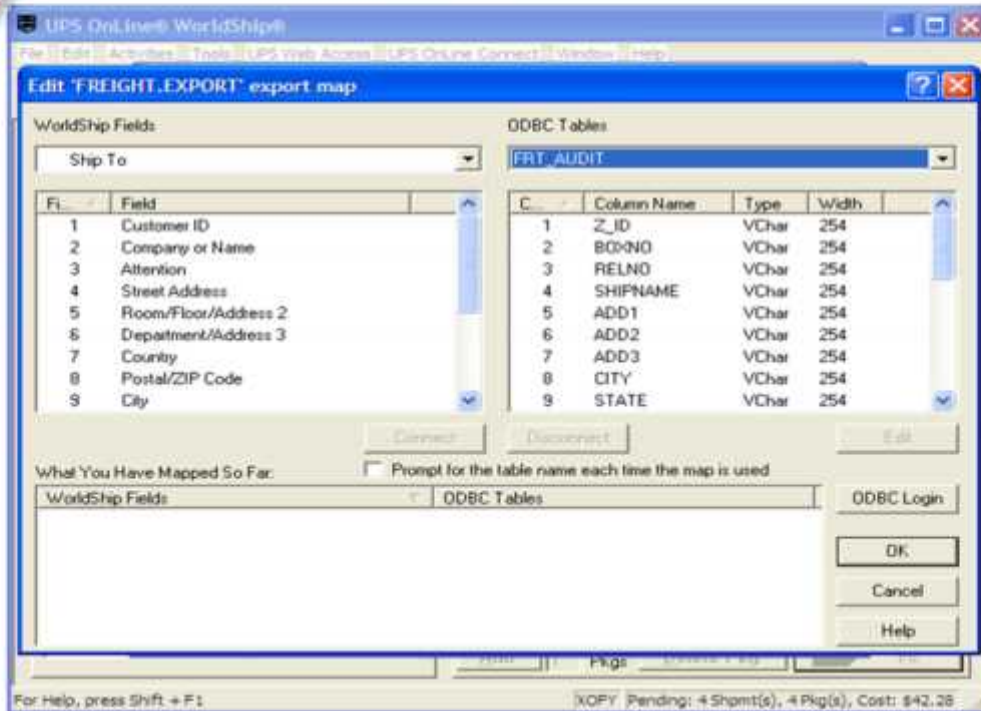
STATE

Lastly, click on the "Connect" button in the middle of the window.

Notes:



UPS WorldShip Mappings p13



UPS WorldShip Mapping

Freight Export

Continued...

Next field:

On the left hand side, underneath "Ship To", click on:

ROOM/FLR/ADD 2

Now, on the right hand side, underneath "FRT_AUDIT", click on:

ADD 2

Lastly, click on the "Connect" button in the middle of the window.

Next field:

On the left hand side, underneath "Ship To", click on:

DEPT/ADD 3

Now, on the right hand side, underneath "FRT_AUDIT", click on:

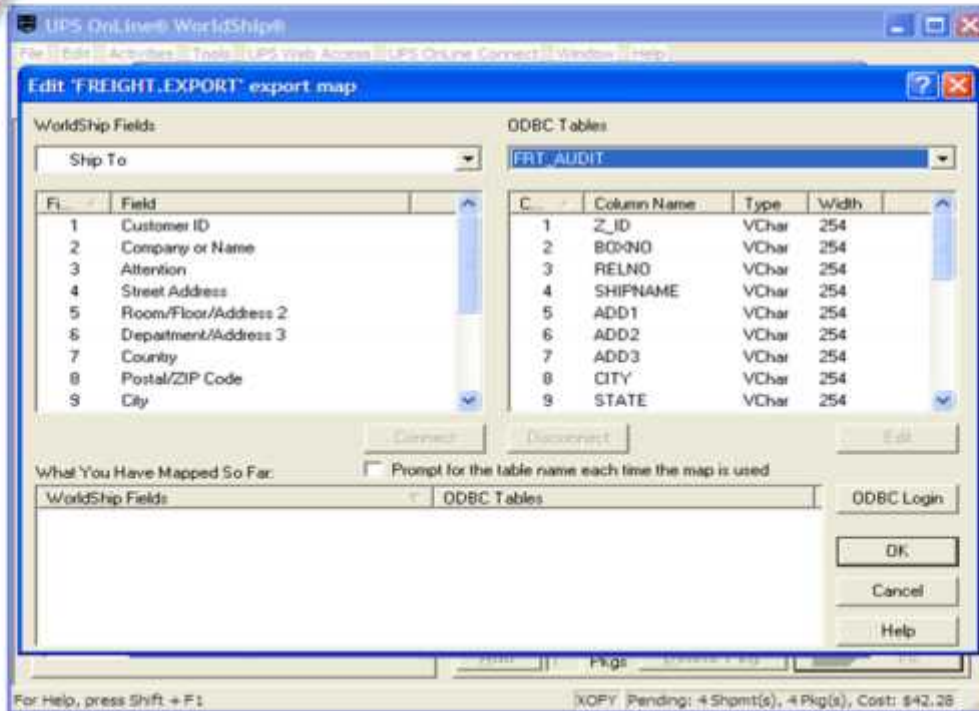
ADD 3

Lastly, click on the "Connect" button in the middle of the window.

Notes:



UPS WorldShip Mappings p14



UPS WorldShip Mapping

Freight Export

Continued...

Next field:

On the left hand side, underneath "Ship To", click on:

POSTAL/ZIP

Now, on the right hand side, underneath "FRT_AUDIT", click on:

ZIP

Lastly, click on the "Connect" button in the middle of the window.

Next field:

On the left hand side, underneath "Ship To", click on:

COMPANY/NAME

Now, on the right hand side, underneath "FRT_AUDIT", click on:

SHIP NAME

Lastly, click on the "Connect" button in the middle of the window.

Next field:

On the left hand side, underneath "Ship To", click on:

CITY

Now, on the right hand side, underneath "FRT_AUDIT", click on:

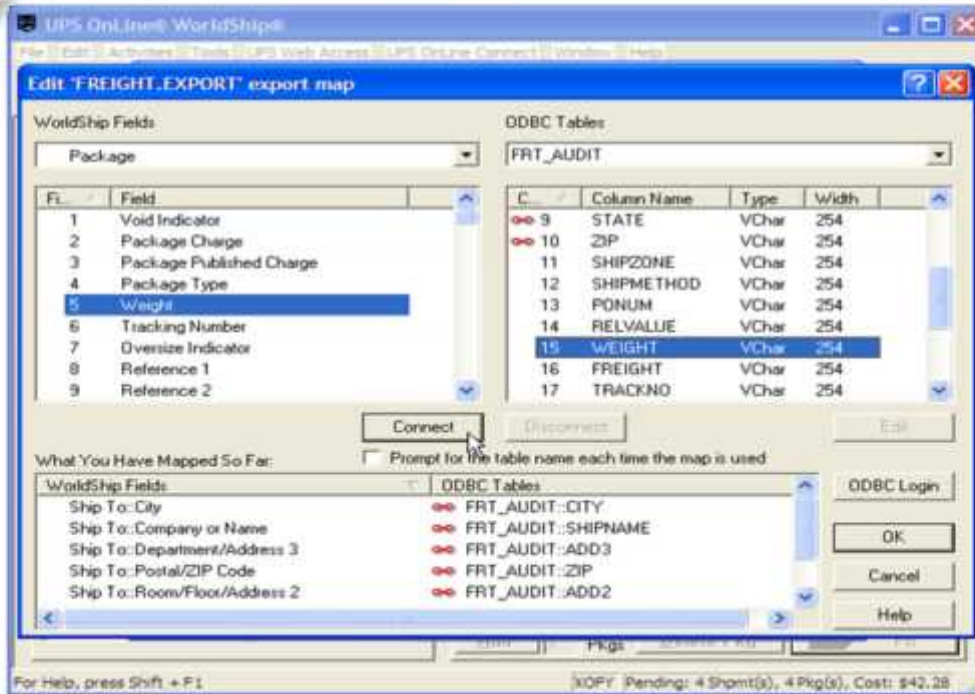
CITY

Lastly, click on the "Connect" button in the middle of the window.

Notes:



UPS WorldShip Mappings p15



UPS WorldShip Mapping

Freight Export

On the left hand side, underneath the drop down box titled "WorldShip Fields", click on the drop down box and select "Package".

On the right hand side the drop down box titled "ODBC Tables", should still be set on "FRT_AUDIT"

Now, we will connect the two together. On the left hand side, underneath "Package", click on:

WEIGHT

Now, on the right hand side, underneath "FRT_AUDIT", click on:

WEIGHT

Lastly, click on the "Connect" button in the middle of the window.

Next field:

On the left hand side, underneath "Package", click on:

TRACKING NUMBER

Now, on the right hand side, underneath "FRT_AUDIT", click on:

TRACKNO

Lastly, click on the "Connect" button in the middle of the window.

Next field:

On the left hand side, underneath "Package", click on:

TRACKING NUMBER

Now, on the right hand side, underneath "FRT_AUDIT", click on:

TRACKNO

Notes:

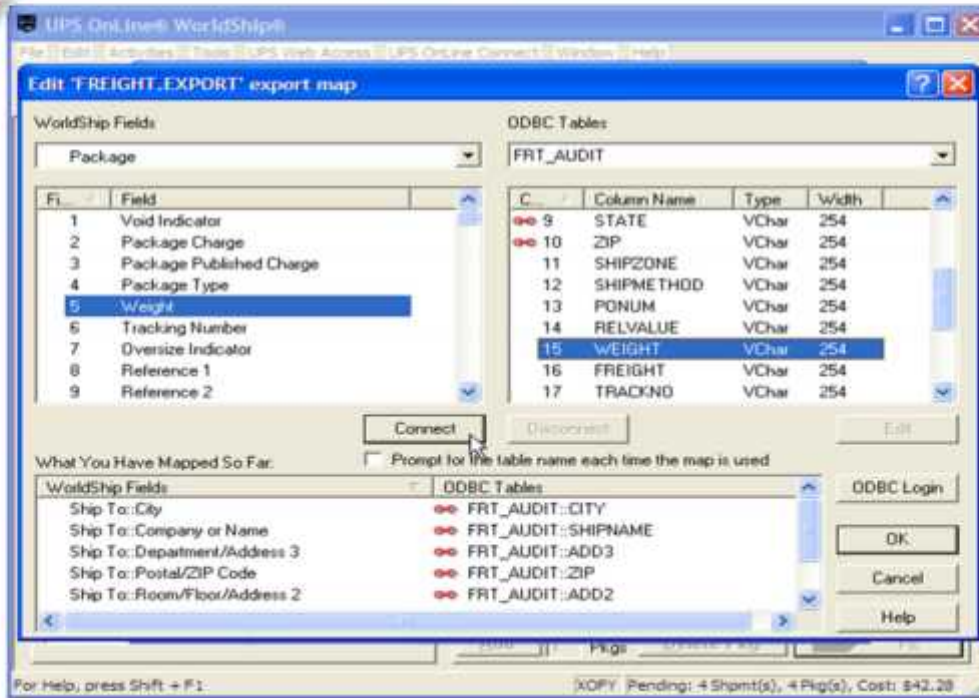
Z_ID

Lastly, click on the "Connect" button in the middle of the window.

Notes:



UPS WorldShip Mappings p16



UPS WorldShip Mapping

Freight Export

Continued...

Next field:

On the left hand side, underneath "Package", click on:

REFERENCE 1

Now, on the right hand side, underneath "FRT_AUDIT", click on:

RELNO

Lastly, click on the "Connect" button in the middle of the window.

Next field:

On the left hand side, underneath "Package", click on:

PACKAGE CHARGE

Now, on the right hand side, underneath "FRT_AUDIT", click on:

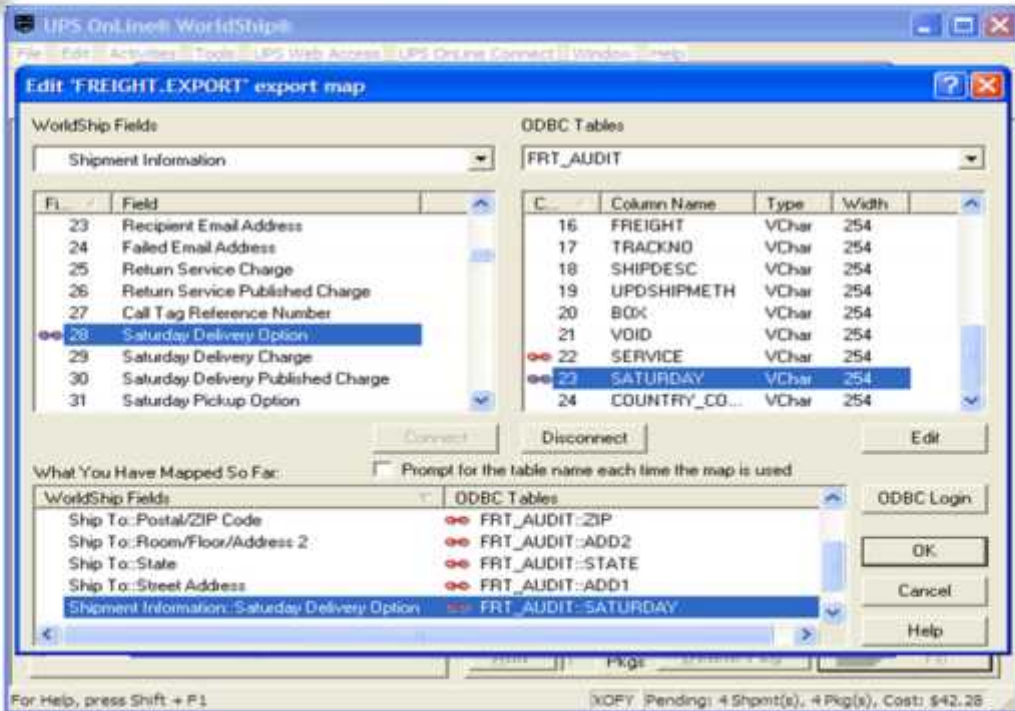
FREIGHT

Lastly, click on the "Connect" button in the middle of the window.

Notes:



UPS WorldShip Mappings p17



UPS WorldShip Mapping

Freight Export

On the left hand side, underneath the drop down box titled "WorldShip Fields", click on the drop down box and select "Shipment Information".

On the right hand side the drop down box titled "ODBC Tables", should still be set on "FRT_AUDIT"

Now, we will connect the two together. On the left hand side, underneath "Shipment Information", click on:

SERVICE TYPE

Now, on the right hand side, underneath "FRT_AUDIT", click on:

SERVICE

Lastly, click on the "Connect" button in the middle of the window.

Next field:

On the left hand side, underneath "Shipment Information", click on:

SATURDAY DELIVERY OPTION

Now, on the right hand side, underneath "FRT_AUDIT", click on:

SATURDAY

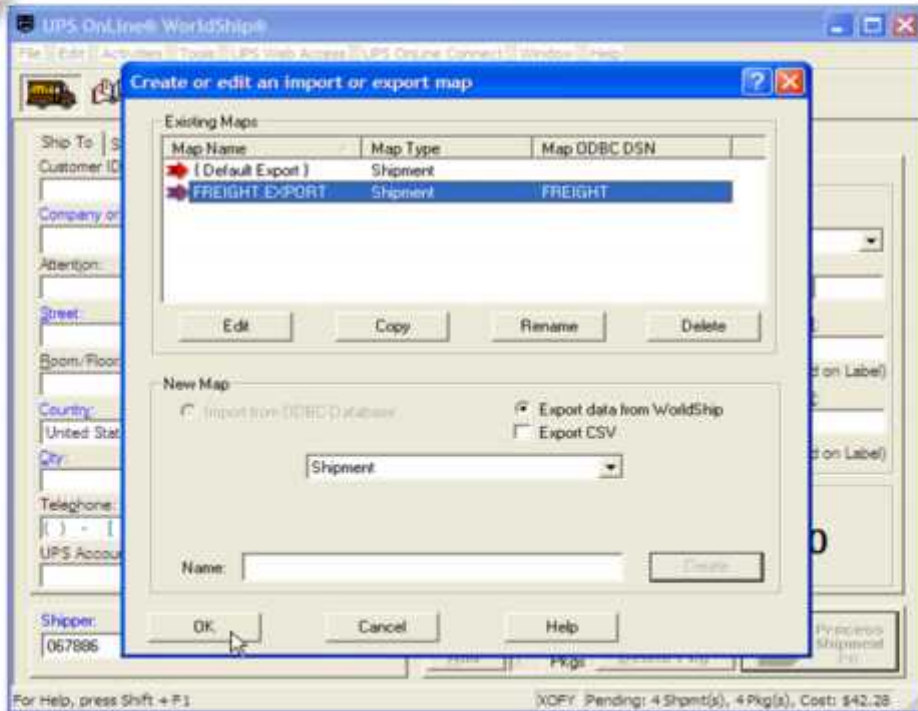
Lastly, click on the "Connect" button in the middle of the window.

We are now done connecting WorldShip fields to ODBC Tables, click "OK".

Notes:



UPS WorldShip Mappings p18



UPS WorldShip Mapping

Freight Export

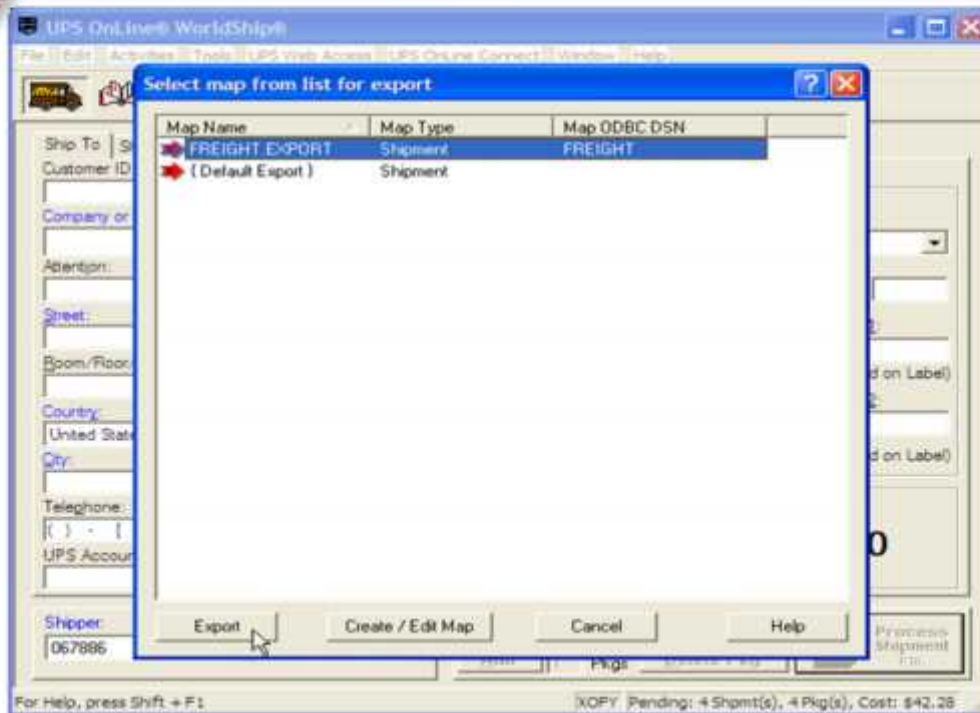
The box titled "Create or edit an import or export map" is displayed. Click on the newly created map, FREIGHT.EXPORT.

Click on the "OK" button.

Notes:



UPS WorldShip Mappings p19



UPS WorldShip Mapping

Freight Export

The "Select map from list for export" box is displayed. Highlight the map name, FREIGHT.IMPORT.

Click on the "EXPORT" button

The UPS WorldShip mappings is now complete.

Notes:

Comments:



Where to Get More Information

- To contact support call 973-777-8050 or fax 973-777-3063.
- To access the The System's House website the address is:
www.tshinc.com.

Notes:
